

Converting Colors

HunterLab(48.2285, 80.5742,
12.3293)

Have a look what the booklet for
HunterLab(48.2285, 80.5742,
12.3293) contains.

HunterLab(48.2290, 80.5936, 12.2845)	3
<i>Conversions</i>	4
<i>Details</i>	6
<i>Harmonies</i>	12
<i>Previews</i>	24
<i>Color Blindness Simulation</i>	28
<i>CSS Examples</i>	31

Color

**HunterLab(48.2290, 80.5936,
12.2845)**

Conversions

Conversions Part 1

Format	Color
Hex	FF1C70
RGB	255, 28, 112
RGB Percent	100%, 11%, 44%
CMY	0.0000, 0.8901, 0.5608
CMYK	0.00, 0.89, 0.56, 0.00
HSL	338°, 100%, 55%
HSV	338°, 89%, 100%
XYZ	44.5799, 23.2604, 17.4693
YIQ	105.4490, 108.3280, 74.2480

Conversions

Conversions Part 2

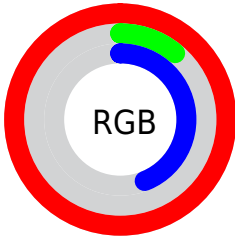
Format	Color
R_{YB}	255, 28, 112
Decimal	16718960
CIE Lab	55.34, 80.98, 14.32
CIE LCh	55, 82.236, 10.031
Yxy	23.2618, 0.5226, 0.2727
Android (android.graphics.Color)	4294909040 (0xFFFF1C70)
YUV	105.4490, 3.2296, 131.1562
Hunter-Lab	48.2290, 80.5936, 12.2845

Details

The HunterLab color **48.2290, 80.5936, 12.2845** is a dark color, and the websafe version is hex **FF0066**. The color can be described as dark washed rose. A complement of this color would be **86.4341, -61.2328, 25.7493**, and the grayscale version is **37.7208, -2.0127, 2.0494**.

A 20% lighter version of the original color is **58.4914, 59.3968, 1.9585**, and **33.8497, 59.0961, 13.1330** is the 20% darker color. If you saturate the color by 10%, you get **47.0725, 82.1045, 16.5246**, and if you desaturate by 10%, it is **50.4134, 76.2007, 8.3536**.

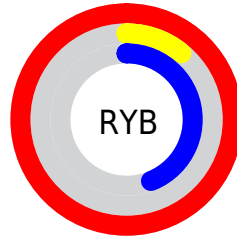
Distribution



Red (100%)

Green (11%)

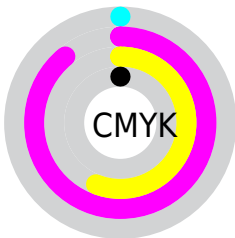
Blue (44%)



Red (100%)

Yellow (11%)

Blue (44%)

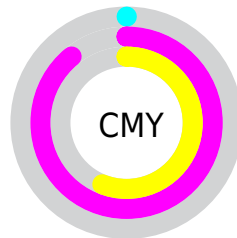


Cyan (0%)

Magenta (89%)

Yellow (56%)

Black (0%)



Cyan (0%)

Magenta (89%)

Yellow (56%)

Brightness & Saturation Gradients

These gradients show how the HunterLab color 48.2290, 80.5936, 12.2845 changes by changing the brightness by 10 percent. The first figure shows a shift by +10% for each color and the second figure -10%.

Similar to the brightness gradients but the following saturation gradients show a change of the HunterLab color 48.2290, 80.5936, 12.2845 by changing the saturation by 10% instead.

48.2290, 80.5936,
12.2845

48.2290, 80.5936,
12.2845

164.0325,
100.2159, 24.4597

38.4538, 78.1239,
10.8755

69.8733, 85.4930,
15.0266

29.4448, 75.7836,
9.4181

81.6564, 87.8534,
16.3760

21.2757, 73.8258,
7.8862

94.0363, 90.1314,
17.7195

14.0437, 72.9145,
6.2516

106.9853, 92.3222,
19.0612

7.6894, 77.8817,
5.3826

120.4795, 94.4245,
20.4039

0.0000, INF, NaN

0.0000, INF, NaN

134.4978, 96.4394,

21.7502

0.0000, NaN, NaN

149.0211, 98.3690,
23.1016

0.0000, NaN, NaN

■ 48.2290, 80.5936,
12.2845

■ 48.2290, 80.5936,
12.2845

■ 47.0725, 82.1045,
16.5246

■ 50.4134, 76.2007,
8.3536

■ 46.9832, 82.1931,
16.9251

■ 53.7346, 69.0099,
5.1471

■ 58.1488, 59.7258,
2.8734

■ 63.5441, 49.1657,
1.5637

■ 69.7855, 37.9981,
1.1345

76.7424, 26.6670,
1.4537

84.3004, 15.4242,
2.3853

92.3652, 4.3898,
3.8096

100.0000, -5.3359,
5.4331

Harmonies

Analogous

The Analogous color harmony consists of three colors that are next to each other on the color wheel.



48.2305, 75.9351, -23.9420



48.2290, 80.5936, 12.2845



48.2305, 58.6871, 27.9962

Triad

The Triadic color harmony groups three colors that are evenly spaced from another and form a triangle on the color wheel.



48.2305, 80.5882, 12.2857



48.2305, -37.9552, 30.1412



48.2305, -23.0105, -100.6799

Complementary

The Complementary color scheme is a pair of colors which are on the opposite of each other on the color wheel.



48.2290, 80.5936, 12.2845



86.4341, -61.2328, 25.7493

Split Complementary

Split-complementary colors differ from the complementary color scheme. The scheme consists of three colors, the original color and two neighbors of the complement color.



48.2305, -43.2527, -57.2933



48.2290, 80.5936, 12.2845



48.2305, -50.0689, 19.4536

Square

The Square scheme is like the rectangle color scheme, but the four colors are evenly spaced on the color wheel.



48.2305, 80.5882, 12.2857



48.2305, -13.4869, 32.5197



48.2305, -51.6923, -9.5688



48.2305, 9.4002, -108.2415

Rectangle

The Rectangle color scheme consists of four colors that form a rectangle on the color wheel.



48.2290, 80.5936, 12.2845



48.2305, 34.7935, 31.4411



48.2305, -51.6923, -9.5688



48.2305, -31.1839, -88.8596

Sweetspot

The Sweet Spot groups the original color and five complimentary colors.



48.2305, 80.5882, 12.2857



78.2147, 24.3978, 1.5957



40.4676, 81.8589, -112.2424



35.0338, 13.0745, 0.6332

0.0000, NaN, NaN



46.2646, -2.4686, 2.5136

Same Dimension

The Same Dimension uses a secret algorithm to generate beautiful new colors.



48.2305, 80.5882, 12.2857



46.9833, 82.1933, 16.9252



49.0205, 70.0375, 30.1012



42.5420, 2.2821, 1.7251



34.0009, 59.5563, 11.6705



10.7045, 18.9318, 2.2655

Inverse Universe

The Inverse Universe completely reimagines the original color for something new.



48.2305, 80.5882, 12.2857



46.9833, 82.1933, 16.9252



79.5240, -34.9805, -22.1457



42.5420, 2.2821, 1.7251



34.0009, 59.5563, 11.6705



10.7045, 18.9318, 2.2655

Previews

White Background



This preview shows how the HunterLab color 48.2290, 80.5936, 12.2845 looks on a white background.

Color Contrast Check

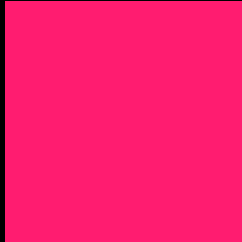
Large Text (above 18pt) WCAG AA ✓ Pass

Any Text WCAG AA × Fail

Large Text (above 18pt) WCAG AAA × Fail

Any Text WCAG AAA × Fail

Black Background



This preview shows how the HunterLab color 48.2290, 80.5936, 12.2845 looks on a black background.

Color Contrast Check

Large Text (above 18pt) WCAG AA ✓ Pass

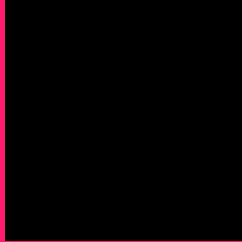
Any Text WCAG AA ✓ Pass

Large Text (above 18pt) WCAG AAA ✓ Pass

Any Text WCAG AAA × Fail

If you want to check with other color combinations, try the [Color Contrast Checker](#).

HunterLab 48.2290, 80.5936, 12.2845 Background



This preview shows how black text looks on a background with the HunterLab color 48.2290, 80.5936, 12.2845.



This preview shows how white text looks on a background with the HunterLab color 48.2290, 80.5936,

Color Blindness Simulation

Color vision deficiency is a very complex topic, and I could not describe the different causes any better than Wikipedia does, so if you want to learn more, you should check out their [article about color blindness](#).

Dichromacy



Original Color

48.2290, 80.5936, 12.2845

Protanopia

48.5310, 0.9490, -10.7095

Deuteranopia

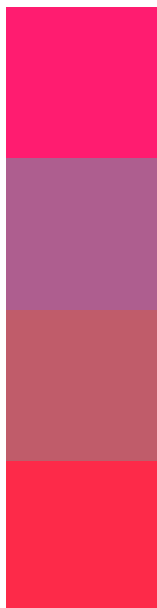
48.4413, 3.0300, 14.5167



Tritanopia

48.1736, 70.8067, 27.2100

Trichromacy



Original Color

48.2290, 80.5936, 12.2845

Protanomaly

43.5744, 31.9574, -7.9492

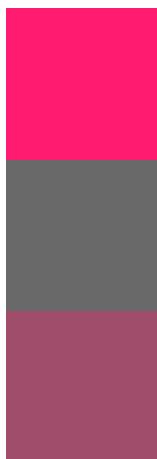
Deuteranomaly

44.6109, 34.6339, 9.9730

Tritanomaly

47.9788, 74.2975, 23.0756

Monochromacy



Original Color

48.2290, 80.5936, 12.2845

Achromatopsia

37.5850, -2.0054, 2.0421

Achromatomaly

37.2345, 30.0372, 0.8784

CSS Examples

Text

The CSS property to change the color of the text to HunterLab 48.2290, 80.5936, 12.2845 is called "color". The color property can be set on classes, ids or directly on the HTML element.

This example shows how text in the color `rgb(255, 28, 112)` looks like.

```
.text, #text, p{  
    color:rgb(255, 28, 112)  
}
```

If you want to add a text shadow in that color use the text-shadow property, you can generate a text shadow directly with our [CSS Text Shadow Generator](#).

Here you see how black text with a 4 pixel rgb(255, 28, 112) colored shadow looks like.

```
.shadow{ text-shadow: 4px 4px 2px rgb(255, 28, 112) }
```

Border

The CSS property to change the border of an element to HunterLab 48.2290, 80.5936, 12.2845 is called "border". The border property can be set on classes, ids or directly on the HTML element.

This example shows the color as border, it can be applied via the CSS property "border" or "border-color".

```
.border, #border, table{ border:4px solid rgb(255, 28, 112) }
```


If only the border color should be changed use the property `border-color`.

```
.border{ border-color:rgb(255, 28, 112) }
```

If you want to add a box shadow in that color use:

Here you see how a box with a 4 pixel `rgb(255, 28, 112)` colored shadow looks like.

```
.boxshadow{ -moz-box-shadow:4px 4px 4px  
4px rgb(255, 28, 112); -webkit-box-  
shadow:4px 4px 4px 4px rgb(255, 28, 112);  
box-shadow:4px 4px 4px 4px rgb(255, 28,  
112) }
```

Background

The CSS property to change the background color of an element to HunterLab 48.2290, 80.5936, 12.2845 is called "background". The background property can be set on classes, ids or directly on the HTML element.

```
.background, #background, body{  
background: rgb(255, 28, 112) }
```

If only the background color should be changed can be used:

```
.background{ background-color: rgb(255, 28,  
112) }
```

This example shows the color as background, it is applied via the CSS property "background".

To optimize and compress your CSS code, you can use our [online CSS compressor and optimizer](#) based on csstidy. If you want to create a linear or radial gradient as background or border, check our [CSS Gradient Generator](#).

Hey! You found this booklet interesting? Support Converting Colors with the new Membership Option!

The pro membership hides all ads, plus gives you double the colors in the color bucket, and more awesome pro features!

[Learn more, Memberships starting at \\$2.50/m!](#)

**Follow me
on Twitter!**

@ConvertingColor