

Converting Colors

HunterLab(48.2385, 81.4600,
10.3539)

Have a look what the booklet for
HunterLab(48.2385, 81.4600,
10.3539) contains.

HunterLab(48.2526, 81.3608, 10.4781)	3
<i>Conversions</i>	4
<i>Details</i>	6
<i>Harmonies</i>	12
<i>Previews</i>	24
<i>Color Blindness Simulation</i>	28
<i>CSS Examples</i>	31

Color

**HunterLab(48.2526, 81.3608,
10.4781)**

Conversions

Conversions Part 1

Format	Color
Hex	FF1A75
RGB	255, 26, 117
RGB Percent	100%, 10%, 46%
CMY	0.0000, 0.8979, 0.5412
CMYK	0.00, 0.90, 0.54, 0.00
HSL	336°, 100%, 55%
HSV	336°, 90%, 100%
XYZ	44.8203, 23.2831, 18.9614
YIQ	104.8450, 107.2730, 76.8490

Conversions

Conversions Part 2

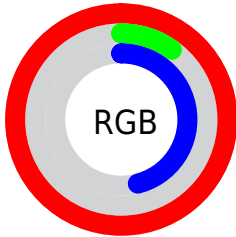
Format	Color
R_{YB}	255, 26, 117
Decimal	16718453
CIE Lab	55.36, 81.58, 11.35
CIE LCh	55, 82.362, 7.924
Yxy	23.2845, 0.5148, 0.2674
Android (android.graphics.Color)	4294908533 (0xFFFF1A75)
YUV	104.8450, 5.9924, 131.6859
Hunter-Lab	48.2526, 81.3608, 10.4781

Details

The HunterLab color **48.2526, 81.3608, 10.4781** is a dark color, and the websafe version is hex **FF0066**. The color can be described as dark washed rose. A complement of this color would be **86.2677, -62.2222, 27.9194**, and the grayscale version is **37.4825, -2.0000, 2.0365**.

A 20% lighter version of the original color is **58.5045, 60.7049, -0.9272**, and **33.9205, 59.3566, 12.0997** is the 20% darker color. If you saturate the color by 10%, you get **47.1418, 82.6881, 14.8067**, and if you desaturate by 10%, it is **50.3493, 77.2288, 6.5145**.

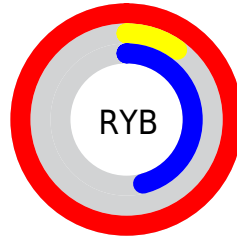
Distribution



Red (100%)

Green (10%)

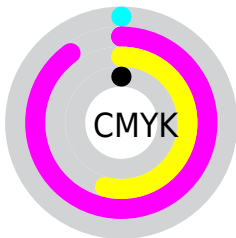
Blue (46%)



Red (100%)

Yellow (10%)

Blue (46%)

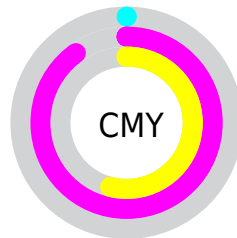


Cyan (0%)

Magenta (90%)

Yellow (54%)

Black (0%)



Cyan (0%)

Magenta (90%)

Yellow (54%)

Brightness & Saturation Gradients

These gradients show how the HunterLab color 48.2526, 81.3608, 10.4781 changes by changing the brightness by 10 percent. The first figure shows a shift by +10% for each color and the second figure -10%.

Similar to the brightness gradients but the following saturation gradients show a change of the HunterLab color 48.2526, 81.3608, 10.4781 by changing the saturation by 10% instead.

48.2526, 81.3608,
10.4781

48.2526, 81.3608,
10.4781

164.0680,
101.1137, 21.3768

38.4756, 78.8846,
9.2639

69.9000, 86.2831,
12.8765

29.4648, 76.5442,
8.0224

81.6846, 88.6575,
14.0712

21.2937, 74.5983,
6.7350

94.0657, 90.9504,
15.2690

14.0593, 73.7242,
5.3662

107.0161, 93.1566,
16.4726

7.7062, 78.7603,
5.3943

120.5115, 95.2746,
17.6838

0.0000, INF, NaN

0.0000, INF, NaN

134.5310, 97.3054,

18.9042

0.0000, NaN, NaN

149.0554, 99.2509,
20.1349

0.0000, NaN, NaN

■ 48.2526, 81.3608,
10.4781

■ 48.2526, 81.3608,
10.4781

■ 47.1418, 82.6881,
14.8067

■ 50.3493, 77.2288,
6.5145

■ 47.1228, 82.7060,
14.8935

■ 53.5744, 70.2389,
3.3560

■ 57.8930, 61.0656,
1.2043

■ 63.1984, 50.5288,
0.0769

■ 69.3580, 39.3160,
-0.1258

76.2413, 27.8938,
0.4499

83.7334, 16.5323,
1.6570

91.7389, 5.3640,
3.3682

100.0000, -5.3359,
5.4331

Harmonies

Analogous

The Analogous color harmony consists of three colors that are next to each other on the color wheel.



48.2540, 74.7335, -27.2950



48.2526, 81.3608, 10.4781



48.2540, 61.0241, 27.4260

Triad

The Triadic color harmony groups three colors that are evenly spaced from another and form a triangle on the color wheel.



48.2540, 81.3555, 10.4794



48.2540, -36.7085, 30.5027



48.2540, -24.8887, -98.7384

Complementary

The Complementary color scheme is a pair of colors which are on the opposite of each other on the color wheel.



48.2526, 81.3608, 10.4781



86.2677, -62.2222, 27.9194

Split Complementary

Split-complementary colors differ from the complementary color scheme. The scheme consists of three colors, the original color and two neighbors of the complement color.



48.2540, -44.2661, -53.8092



48.2526, 81.3608, 10.4781



48.2540, -49.6470, 20.7186

Square

The Square scheme is like the rectangle color scheme, but the four colors are evenly spaced on the color wheel.



48.2540, 81.3555, 10.4794



48.2540, -11.3127, 32.5855



48.2540, -51.9640, -6.8179



48.2540, 6.8274, -109.4890

Rectangle

The Rectangle color scheme consists of four colors that form a rectangle on the color wheel.



48.2526, 81.3608, 10.4781



48.2540, 37.5452, 31.2524



48.2540, -51.9640, -6.8179



48.2540, -32.7689, -86.1302

Sweetspot

The Sweet Spot groups the original color and five complimentary colors.



48.2540, 81.3555, 10.4794



78.2756, 24.7092, 0.7292



39.7372, 81.4322, -115.2478



35.0655, 13.2346, 0.1823

0.0000, NaN, NaN



46.2646, -2.4686, 2.5136

Same Dimension

The Same Dimension uses a secret algorithm to generate beautiful new colors.



48.2540, 81.3555, 10.4794



47.1229, 82.7062, 14.8935



48.5030, 71.6087, 29.9439



42.5519, 2.3353, 1.5839



34.1033, 59.9323, 10.1818



10.7389, 19.0575, 1.7703

Inverse Universe

The Inverse Universe completely reimagines the original color for something new.



48.2540, 81.3555, 10.4794



47.1229, 82.7062, 14.8935



80.7534, -36.6273, -20.3430



42.5519, 2.3353, 1.5839



34.1033, 59.9323, 10.1818



10.7389, 19.0575, 1.7703

Previews

White Background



This preview shows how the HunterLab color 48.2526, 81.3608, 10.4781 looks on a white background.

Color Contrast Check

Large Text (above 18pt) WCAG AA ✓ Pass

Any Text WCAG AA × Fail

Large Text (above 18pt) WCAG AAA × Fail

Any Text WCAG AAA × Fail

Black Background



This preview shows how the HunterLab color 48.2526, 81.3608, 10.4781 looks on a black background.

Color Contrast Check

Large Text (above 18pt) WCAG AA ✓ Pass

Any Text WCAG AA ✓ Pass

Large Text (above 18pt) WCAG AAA ✓ Pass

Any Text WCAG AAA × Fail

If you want to check with other color combinations, try the [Color Contrast Checker](#).

HunterLab 48.2526, 81.3608, 10.4781 Background



This preview shows how black text looks on a background with the HunterLab color 48.2526, 81.3608, 10.4781.



This preview shows how white text looks on a background with the HunterLab color 48.2526, 81.3608,

Color Blindness Simulation

Color vision deficiency is a very complex topic, and I could not describe the different causes any better than Wikipedia does, so if you want to learn more, you should check out their [article about color blindness](#).

Dichromacy



Original Color

48.2526, 81.3608, 10.4781

Protanopia

48.6339, 1.8168, -14.5699

Deuteranopia

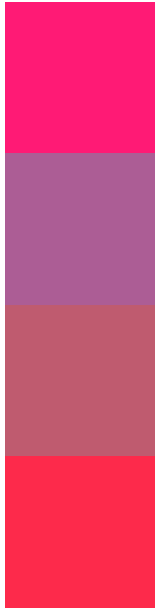
48.4442, 3.2510, 12.8839



Tritanopia

48.2723, 70.5574, 27.1336

Trichromacy



Original Color

48.2526, 81.3608, 10.4781

Protanomaly

43.3235, 32.7601, -11.6435

Deuteranomaly

44.3917, 35.2899, 7.8856

Tritanomaly

48.0068, 74.4064, 22.6631

Monochromacy



Original Color

48.2526, 81.3608, 10.4781

Achromatopsia

37.5850, -2.0054, 2.0421

Achromatomaly

37.0764, 30.6431, 0.2465

CSS Examples

Text

The CSS property to change the color of the text to HunterLab 48.2526, 81.3608, 10.4781 is called "color". The color property can be set on classes, ids or directly on the HTML element.

This example shows how text in the color `rgb(255, 26, 117)` looks like.

```
.text, #text, p{  
    color:rgb(255, 26, 117)  
}
```

If you want to add a text shadow in that color use the text-shadow property, you can generate a text shadow directly with our [CSS Text Shadow Generator](#).

Here you see how black text with a 4 pixel rgb(255, 26, 117) colored shadow looks like.

```
.shadow{ text-shadow: 4px 4px 2px rgb(255, 26, 117) }
```

Border

The CSS property to change the border of an element to HunterLab 48.2526, 81.3608, 10.4781 is called "border". The border property can be set on classes, ids or directly on the HTML element.

This example shows the color as border, it can be applied via the CSS property "border" or "border-color".

```
.border, #border, table{ border:4px solid rgb(255, 26, 117) }
```


If only the border color should be changed use the property `border-color`.

```
.border{ border-color:rgb(255, 26, 117) }
```

If you want to add a box shadow in that color use:

Here you see how a box with a 4 pixel `rgb(255, 26, 117)` colored shadow looks like.

```
.boxshadow{ -moz-box-shadow:4px 4px 4px  
4px rgb(255, 26, 117); -webkit-box-  
shadow:4px 4px 4px 4px rgb(255, 26, 117);  
box-shadow:4px 4px 4px 4px rgb(255, 26,  
117) }
```

Background

The CSS property to change the background color of an element to HunterLab 48.2526, 81.3608, 10.4781 is called "background". The background property can be set on classes, ids or directly on the HTML element.

```
.background, #background, body{  
background: rgb(255, 26, 117) }
```

If only the background color should be changed can be used:

```
.background{ background-color: rgb(255, 26,  
117) }
```

This example shows the color as background, it is applied via the CSS property "background".

To optimize and compress your CSS code, you can use our [online CSS compressor and optimizer](#) based on csstidy. If you want to create a linear or radial gradient as background or border, check our [CSS Gradient Generator](#).

Hey! You found this booklet interesting? Support Converting Colors with the new Membership Option!

The pro membership hides all ads, plus gives you double the colors in the color bucket, and more awesome pro features!

[Learn more, Memberships starting at \\$2.50/m!](#)

**Follow me
on Twitter!**

@ConvertingColor