

Converting Colors

HunterLab(48.3237, 39.9353,
-5.4347)

Have a look what the booklet for
HunterLab(48.3237, 39.9353,
-5.4347) contains.

HunterLab(48.2702, 39.7810, -5.5218)	3
<i>Conversions</i>	4
<i>Details</i>	6
<i>Harmonies</i>	12
<i>Previews</i>	24
<i>Color Blindness Simulation</i>	28
<i>CSS Examples</i>	31

Color

**HunterLab(48.2702, 39.7810,
-5.5218)**

Conversions

Conversions Part 1

Format	Color
Hex	C76397
RGB	199, 99, 151
RGB Percent	78%, 39%, 59%
CMY	0.2196, 0.6117, 0.4078
CMYK	0.00, 0.50, 0.24, 0.22
HSL	329°, 47%, 58%
HSV	329°, 50%, 78%
XYZ	33.6009, 23.3001, 32.0045
YIQ	134.8280, 42.9080, 37.3720

Conversions

Conversions Part 2

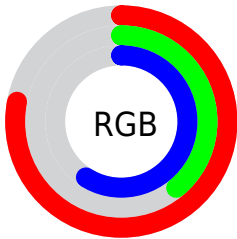
Format	Color
RYB	199, 99, 151
Decimal	13067159
CIELab	55.38, 45.87, -9.91
CIElCh	55, 46.924, 347.811
Yxy	23.3013, 0.3779, 0.2621
Android (android.graphics.Color)	4291257239 (0xFFC76397)
YUV	134.8280, 7.9728, 56.2788
Hunter-Lab	48.2702, 39.7810, -5.5218

Details

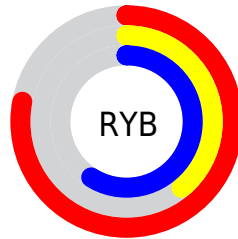
The HunterLab color $48.2702, 39.7810, -5.5218$ is a light color, and the websafe version is hex $CC6699$. A complement of this color would be $67.5327, -36.6762, 16.7348$, and the grayscale version is $49.1125, -2.6205, 2.6684$.

A 20% lighter version of the original color is $69.6062, 41.4166, -5.5814$, and $29.3681, 36.3272, -5.6080$ is the 20% darker color. If you saturate the color by 10%, you get $44.3687, 47.8677, -5.7301$, and if you desaturate by 10%, it is $52.7928, 31.1342, -4.5604$.

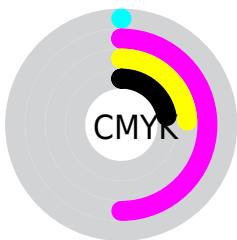
Distribution



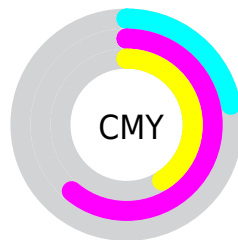
- Red (78%)
- Green (39%)
- Blue (59%)



- Red (78%)
- Yellow (39%)
- Blue (59%)



- Cyan (0%)
- Magenta (50%)
- Yellow (24%)
- Black (22%)



- Cyan (22%)
- Magenta (61%)
- Yellow (41%)

Brightness & Saturation Gradients

These gradients show how the HunterLab color 48.2702, 39.7810, -5.5218 changes by changing the brightness by 10 percent. The first figure shows a shift by +10% for each color and the second figure -10%.

Similar to the brightness gradients but the following saturation gradients show a change of the HunterLab color 48.2702, 39.7810, -5.5218 by changing the saturation by 10% instead.

48.2702, 39.7810,
-5.5218

48.2702, 39.7810,
-5.5218

164.0941, 50.0169,
-2.7918

38.4917, 38.1354,
-5.5575

69.9196, 42.7184,
-5.2561

29.4795, 36.3788,
-5.5213

81.7052, 44.0263,
-5.0397

21.3069, 34.5339,
-5.4030

94.0874, 45.2354,
-4.7730

14.0708, 32.6981,
-5.1937

107.0387, 46.3526,
-4.4596

7.7184, 32.7339,
-5.2944

120.5351, 47.3840,
-4.1023

0.0000, INF, -NF

0.0000, NaN, NaN

134.5554, 48.3352,

-3.7039

0.0000, NaN, NaN

149.0807, 49.2113,
-3.2663

0.0000, NaN, NaN

■ 48.2702, 39.7810,
-5.5218

■ 48.2702, 39.7810,
-5.5218

■ 44.3687, 47.8677,
-5.7301

■ 52.7928, 31.1342,
-4.5604

■ 41.1756, 54.8979,
-5.0461

■ 57.8424, 22.2870,
-3.0032

■ 38.7647, 60.2786,
-3.3903

■ 63.3393, 13.4488,
-0.9839

■ 37.1608, 63.5178,
-0.8173

■ 69.2154, 4.7302,
1.3901

■ 36.2367, 64.7853,
2.2623

■ 75.4151, -3.8221,
4.0373

■ 81.8934, -12.1979,
6.8976

■ 88.6140, -20.4060,
9.9270

■ 94.4624, -26.9185,
11.9311

■ 94.7497, -25.2809,
7.8189

Harmonies

Analogous

The Analogous color harmony consists of three colors that are next to each other on the color wheel.



48.2714, 28.4400, -27.9633



48.2702, 39.7810, -5.5218



48.2714, 38.5268, 12.3082

Triad

The Triadic color harmony groups three colors that are evenly spaced from another and form a triangle on the color wheel.



48.2714, 39.7784, -5.5206



48.2714, -13.5131, 25.7353



48.2714, -25.2531, -31.9459

Complementary

The Complementary color scheme is a pair of colors which are on the opposite of each other on the color wheel.



48.2702, 39.7810, -5.5218



67.5327, -36.6762, 16.7348

Split Complementary

Split-complementary colors differ from the complementary color scheme. The scheme consists of three colors, the original color and two neighbors of the complement color.



48.2714, -33.3234, -9.5961



48.2702, 39.7810, -5.5218



48.2714, -27.3221, 20.9593

Square

The Square scheme is like the rectangle color scheme, but the four colors are evenly spaced on the color wheel.



48.2714, 39.7784, -5.5206



48.2714, 5.5908, 26.0969



48.2714, -34.0152, 9.5639



48.2714, -10.2377, -46.8108

Rectangle

The Rectangle color scheme consists of four colors that form a rectangle on the color wheel.



48.2702, 39.7810, -5.5218



48.2714, 30.7348, 19.7698



48.2714, -34.0152, 9.5639



48.2714, -28.7576, -24.7302

Sweetspot

The Sweet Spot groups the original color and five complimentary colors.



48.2714, 39.7784, -5.5206



87.6643, 11.9695, 0.2266



43.7368, 31.8854, -45.7391



39.7926, 6.6816, -0.2022

0.0000, NaN, NaN



46.2646, -2.4686, 2.5136

Same Dimension

The Same Dimension uses a secret algorithm to generate beautiful new colors.



48.2714, 39.7784, -5.5206



58.4139, 63.9768, -7.5618



46.9392, 33.5779, 13.5222



32.7529, 1.8701, 0.7560



29.0883, 52.0618, 1.3772



6.4438, 11.7420, -1.3142

Inverse Universe

The Inverse Universe completely reimagines the original color for something new.



48.2714, 39.7784, -5.5206



58.4139, 63.9768, -7.5618



68.8987, -28.6121, -2.8163



32.7529, 1.8701, 0.7560



29.0883, 52.0618, 1.3772



6.4438, 11.7420, -1.3142

Previews

White Background



This preview shows how the HunterLab color 48.2702, 39.7810, -5.5218 looks on a white background.

Color Contrast Check

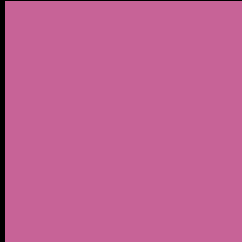
Large Text (above 18pt) WCAG AA ✓ Pass

Any Text WCAG AA × Fail

Large Text (above 18pt) WCAG AAA × Fail

Any Text WCAG AAA × Fail

Black Background



This preview shows how the HunterLab color 48.2702, 39.7810, -5.5218 looks on a black background.

Color Contrast Check

Large Text (above 18pt) WCAG AA ✓ Pass

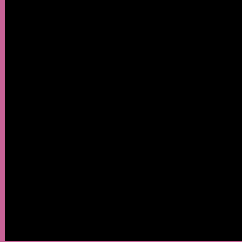
Any Text WCAG AA ✓ Pass

Large Text (above 18pt) WCAG AAA ✓ Pass

Any Text WCAG AAA × Fail

If you want to check with other color combinations, try the [Color Contrast Checker](#).

HunterLab 48.2702, 39.7810, -5.5218 Background



This preview shows how black text looks on a background with the HunterLab color 48.2702, 39.7810, -5.5218.



This preview shows how white text looks on a background with the HunterLab color 48.2702, 39.7810, -5.5218.

-5.5218.

Color Blindness Simulation

Color vision deficiency is a very complex topic, and I could not describe the different causes any better than Wikipedia does, so if you want to learn more, you should check out their [article about color blindness](#).

Dichromacy



Original Color

48.2702, 39.7810, -5.5218

Protanopia

48.6387, 2.3002, -18.1817

Deuteranopia

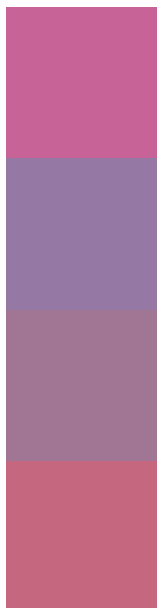
48.3232, 3.5475, -3.5272



Tritanopia

48.0885, 29.7893, 10.5256

Trichromacy



Original Color

48.2702, 39.7810, -5.5218

Protanomaly

47.5748, 14.6173, -14.7919

Deuteranomaly

47.6152, 16.0980, -5.2644

Tritanomaly

47.9255, 33.2517, 5.2737

Monochromacy



Original Color

48.2702, 39.7810, -5.5218

Achromatopsia

49.2221, -2.6264, 2.6743

Achromatomaly

48.0742, 11.9177, -1.2467

CSS Examples

Text

The CSS property to change the color of the text to HunterLab 48.2702, 39.7810, -5.5218 is called "color". The color property can be set on classes, ids or directly on the HTML element.

This example shows how text in the color `rgb(199, 99, 151)` looks like.

```
.text, #text, p{  
    color:rgb(199, 99, 151)  
}
```

If you want to add a text shadow in that color use the text-shadow property, you can generate a text shadow directly with our [CSS Text Shadow Generator](#).

Here you see how black text with a 4 pixel rgb(199, 99, 151) colored shadow looks like.

```
.shadow{ text-shadow: 4px 4px 2px rgb(199, 99, 151) }
```

Border

The CSS property to change the border of an element to HunterLab 48.2702, 39.7810, -5.5218 is called "border". The border property can be set on classes, ids or directly on the HTML element.

This example shows the color as border, it can be applied via the CSS property "border" or "border-color".

```
.border, #border, table{ border:4px solid rgb(199, 99, 151) }
```


If only the border color should be changed use the property `border-color`.

```
.border{ border-color:rgb(199, 99, 151) }
```

If you want to add a box shadow in that color use:

Here you see how a box with a 4 pixel `rgb(199, 99, 151)` colored shadow looks like.

```
.boxshadow{ -moz-box-shadow:4px 4px 4px  
4px rgb(199, 99, 151); -webkit-box-  
shadow:4px 4px 4px 4px rgb(199, 99, 151);  
box-shadow:4px 4px 4px 4px rgb(199, 99,  
151) }
```

Background

The CSS property to change the background color of an element to HunterLab 48.2702, 39.7810, -5.5218 is called "background". The background property can be set on classes, ids or directly on the HTML element.

```
.background, #background, body{  
background: rgb(199, 99, 151) }
```

If only the background color should be changed can be used:

```
.background{ background-color: rgb(199, 99,  
151) }
```

This example shows the color as background, it is applied via the CSS property "background".

To optimize and compress your CSS code, you can use our [online CSS compressor and optimizer](#) based on csstidy. If you want to create a linear or radial gradient as background or border, check our [CSS Gradient Generator](#).

Hey! You found this booklet interesting? Support Converting Colors with the new Membership Option!

The pro membership hides all ads, plus gives you double the colors in the color bucket, and more awesome pro features!

[Learn more, Memberships starting at \\$2.50/m!](#)

**Follow me
on Twitter!**

@ConvertingColor