

Converting Colors

HunterLab(48.4678, 8.6782,
23.7326)

Have a look what the booklet for
HunterLab(48.4678, 8.6782,
23.7326) contains.

HunterLab(48.4185, 8.5385, 23.6732)	3
<i>Conversions</i>	4
<i>Details</i>	6
<i>Harmonies</i>	12
<i>Previews</i>	24
<i>Color Blindness Simulation</i>	28
<i>CSS Examples</i>	31

Color

**HunterLab(48.4185, 8.5385,
23.6732)**

Conversions

Conversions Part 1

Format	Color
Hex	AD7B42
RGB	173, 123, 66
RGB Percent	68%, 48%, 26%
CMY	0.3216, 0.5176, 0.7412
CMYK	0.00, 0.29, 0.62, 0.32
HSL	32°, 45%, 47%
HSV	32°, 62%, 68%
XYZ	25.2999, 23.4435, 8.3458
YIQ	131.4520, 48.0970, -7.1270

Conversions

Conversions Part 2

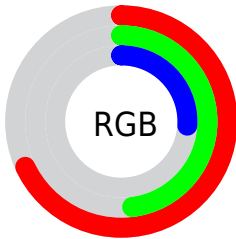
Format	Color
RYB	160, 173, 66
Decimal	11369282
CIELab	55.53, 13.33, 38.36
CIELCh	56, 40.614, 70.840
Yxy	23.4447, 0.4432, 0.4107
Android (android.graphics.Color)	4289559362 (0xFFAD7B42)
YUV	131.4520, -32.2678, 36.4376
Hunter-Lab	48.4185, 8.5385, 23.6732

Details

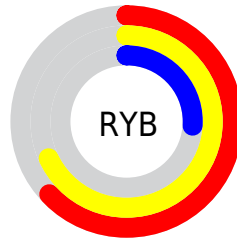
The HunterLab color $48.4185, 8.5385, 23.6732$ is a dark color, and the websafe version is hex 996633 . A complement of this color would be $40.8233, -1.3291, -32.2871$, and the grayscale version is $47.9300, -2.5574, 2.6041$.

A 20% lighter version of the original color is $69.9356, 8.8989, 29.2419$, and $29.5350, 8.1105, 17.1925$ is the 20% darker color. If you saturate the color by 10%, you get $46.2028, 11.4935, 24.9846$, and if you desaturate by 10%, it is $50.7639, 5.8730, 21.7537$.

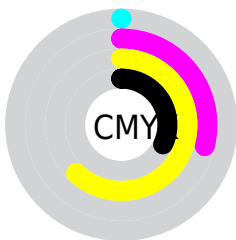
Distribution



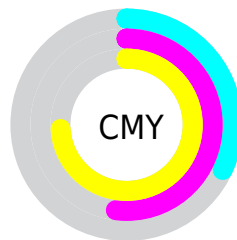
- Red (68%)
- Green (48%)
- Blue (26%)



- Red (63%)
- Yellow (68%)
- Blue (26%)



- Cyan (0%)
- Magenta (29%)
- Yellow (62%)
- Black (32%)



- Cyan (32%)
- Magenta (52%)
- Yellow (74%)

Brightness & Saturation Gradients

These gradients show how the HunterLab color 48.4185, 8.5385, 23.6732 changes by changing the brightness by 10 percent. The first figure shows a shift by +10% for each color and the second figure -10%.

Similar to the brightness gradients but the following saturation gradients show a change of the HunterLab color 48.4185, 8.5385, 23.6732 by changing the saturation by 10% instead.

■ 48.4185, 8.5385,
23.6732

■ 48.4185, 8.5385,
23.6732

164.3170, 7.5439,
47.0211

■ 38.6293, 8.3239,
20.5536

■ 70.0874, 8.7213,
29.4422

■ 29.6054, 8.0158,
17.2184

■ 81.8820, 8.7115,
32.1519

■ 21.4198, 7.5942,
13.9008

■ 94.2726, 8.6419,
34.7742

■ 14.1692, 7.0337,
9.9185

■ 107.2320, 8.5175,
37.3246

■ 7.8225, 7.0460,
5.4758

■ 120.7362, 8.3423,
39.8156

0.0000, NaN, NaN

0.0000, NaN, NaN

134.7640, 8.1197,

42.2570

0.0000, NaN, NaN

149.2966, 7.8528,
44.6566

0.0000, NaN, NaN

■ 48.4185, 8.5385,
23.6732

■ 48.4185, 8.5385,
23.6732

■ 46.2028, 11.4935,
24.9846

■ 50.7639, 5.8730,
21.7537

■ 44.1213, 14.7334,
25.6658

■ 53.2268, 3.5045,
19.2588

■ 42.1823, 18.2280,
25.7226

■ 55.8003, 1.4232,
16.2299

■ 40.7028, 21.1933,
25.4519

■ 58.4762, -0.3832,
12.7099

■ 61.2471, -1.9299,
8.7410

■ 64.1062, -3.2335,
4.3633

■ 67.0471, -4.3111,
-0.3861

■ 70.0640, -5.1795,
-5.4736

■ 73.1517, -5.8548,
-10.8687

Harmonies

Analogous

The Analogous color harmony consists of three colors that are next to each other on the color wheel.



48.4197, 24.5036, 18.7943



48.4185, 8.5385, 23.6732



48.4197, -8.5419, 24.2142

Triad

The Triadic color harmony groups three colors that are evenly spaced from another and form a triangle on the color wheel.



48.4197, 8.5361, 23.6737



48.4197, -30.5241, -3.5398



48.4197, 20.5258, -27.0329

Complementary

The Complementary color scheme is a pair of colors which are on the opposite of each other on the color wheel.



48.4185, 8.5385, 23.6732



40.8233, -1.3291, -32.2871

Split Complementary

Split-complementary colors differ from the complementary color scheme. The scheme consists of three colors, the original color and two neighbors of the complement color.



48.4197, 3.6722, -38.5649



48.4185, 8.5385, 23.6732



48.4197, -24.7805, -22.2222

Square

The Square scheme is like the rectangle color scheme, but the four colors are evenly spaced on the color wheel.



48.4197, 8.5361, 23.6737



48.4197, -29.5949, 11.7153



48.4197, -12.7871, -36.5528



48.4197, 32.0547, -8.6352

Rectangle

The Rectangle color scheme consists of four colors that form a rectangle on the color wheel.



48.4185, 8.5385, 23.6732



48.4197, -18.1305, 22.3606



48.4197, -12.7871, -36.5528



48.4197, 15.2061, -32.0848

Sweetspot

The Sweet Spot groups the original color and five complimentary colors.



48.4197, 8.5361, 23.6737



79.1785, -1.0656, 15.7270



37.5261, 41.0457, -3.0989



36.4387, -0.2126, 7.9885



93.2148, -4.9737, 5.0645



40.3295, -2.1519, 2.1912

Same Dimension

The Same Dimension uses a secret algorithm to generate beautiful new colors.



48.4197, 8.5361, 23.6737



60.8513, 16.8336, 33.8458



62.4200, -15.5279, 33.2951



29.4877, -1.0868, 3.6475



35.0520, 17.7977, 21.9105



6.7085, 1.2033, 4.1548

Inverse Universe

The Inverse Universe completely reimagines the original color for something new.



40.8233, -1.3291, -32.2871



48.8908, 2.3158, -55.6996



28.5218, 24.3111, -64.1830



28.8981, -1.9238, -0.5950



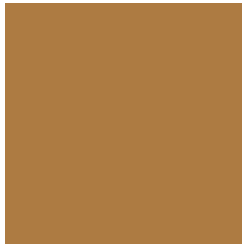
25.7569, 8.6354, -50.8352



5.4287, -0.6001, -5.4899

Previews

White Background



This preview shows how the HunterLab color 48.4185, 8.5385, 23.6732 looks on a white background.

Color Contrast Check

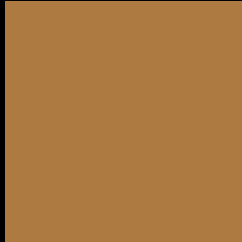
Large Text (above 18pt) WCAG AA ✓ Pass

Any Text WCAG AA × Fail

Large Text (above 18pt) WCAG AAA × Fail

Any Text WCAG AAA × Fail

Black Background



This preview shows how the HunterLab color 48.4185, 8.5385, 23.6732 looks on a black background.

Color Contrast Check

Large Text (above 18pt) WCAG AA ✓ Pass

Any Text WCAG AA ✓ Pass

Large Text (above 18pt) WCAG AAA ✓ Pass

Any Text WCAG AAA × Fail

If you want to check with other color combinations, try the [Color Contrast Checker](#).

HunterLab 48.4185, 8.5385, 23.6732 Background



This preview shows how black text looks on a background with the HunterLab color 48.4185, 8.5385, 23.6732.



This preview shows how white text looks on a background with the HunterLab color 48.4185, 8.5385,

Color Blindness Simulation

Color vision deficiency is a very complex topic, and I could not describe the different causes any better than Wikipedia does, so if you want to learn more, you should check out their [article about color blindness](#).

Dichromacy



Original Color

48.4185, 8.5385, 23.6732

Protanopia

48.3816, -5.3661, 22.8189

Deuteranopia

48.4282, 3.1709, 23.7741



Tritanopia

48.2893, 19.2852, 6.2713

Trichromacy



Original Color

48.4185, 8.5385, 23.6732

Protanomaly

48.1516, -0.4716, 22.9287

Deuteranomaly

48.4962, 4.7615, 23.8524

Tritanomaly

48.3976, 14.8858, 14.0387

Monochromacy



Original Color

48.4185, 8.5385, 23.6732

Achromatopsia

47.6409, -2.5420, 2.5884

Achromatomaly

47.5509, 0.2236, 11.9606

CSS Examples

Text

The CSS property to change the color of the text to HunterLab 48.4185, 8.5385, 23.6732 is called "color". The color property can be set on classes, ids or directly on the HTML element.

This example shows how text in the color `rgb(173, 123, 66)` looks like.

```
.text, #text, p{  
    color:rgb(173, 123, 66)  
}
```

If you want to add a text shadow in that color use the text-shadow property, you can generate a text shadow directly with our [CSS Text Shadow Generator](#).

Here you see how black text with a 4 pixel rgb(173, 123, 66) colored shadow looks like.

```
.shadow{ text-shadow: 4px 4px 2px rgb(173, 123, 66) }
```

Border

The CSS property to change the border of an element to HunterLab 48.4185, 8.5385, 23.6732 is called "border". The border property can be set on classes, ids or directly on the HTML element.

This example shows the color as border, it can be applied via the CSS property "border" or "border-color".

```
.border, #border, table{ border:4px solid rgb(173, 123, 66) }
```


If only the border color should be changed use the property `border-color`.

```
.border{ border-color:rgb(173, 123, 66) }
```

If you want to add a box shadow in that color use:

Here you see how a box with a 4 pixel `rgb(173, 123, 66)` colored shadow looks like.

```
.boxshadow{ -moz-box-shadow:4px 4px 4px  
4px rgb(173, 123, 66); -webkit-box-  
shadow:4px 4px 4px 4px rgb(173, 123, 66);  
box-shadow:4px 4px 4px 4px rgb(173, 123,  
66) }
```

Background

The CSS property to change the background color of an element to HunterLab 48.4185, 8.5385, 23.6732 is called "background". The background property can be set on classes, ids or directly on the HTML element.

```
.background, #background, body{  
background: rgb(173, 123, 66) }
```

If only the background color should be changed can be used:

```
.background{ background-color: rgb(173,  
123, 66) }
```

This example shows the color as background, it is applied via the CSS property "background".

To optimize and compress your CSS code, you can use our [online CSS compressor and optimizer](#) based on csstidy. If you want to create a linear or radial gradient as background or border, check our [CSS Gradient Generator](#).

Hey! You found this booklet interesting? Support Converting Colors with the new Membership Option!

The pro membership hides all ads, plus gives you double the colors in the color bucket, and more awesome pro features!

[Learn more, Memberships starting at \\$2.50/m!](#)

**Follow me
on Twitter!**

@ConvertingColor