

Converting Colors

HunterLab(48.4761, 3.4983,
17.4547)

Have a look what the booklet for
HunterLab(48.4761, 3.4983,
17.4547) contains.

HunterLab(48.2932, 3.5267, 17.3890)	3
<i>Conversions</i>	4
<i>Details</i>	6
<i>Harmonies</i>	12
<i>Previews</i>	24
<i>Color Blindness Simulation</i>	28
<i>CSS Examples</i>	31

Color

**HunterLab(48.2932, 3.5267,
17.3890)**

Conversions

Conversions Part 1

Format	Color
Hex	9F7F5C
RGB	159, 127, 92
RGB Percent	62%, 50%, 36%
CMY	0.3765, 0.5019, 0.6392
CMYK	0.00, 0.20, 0.42, 0.38
HSL	31°, 27%, 49%
HSV	31°, 42%, 62%
XYZ	23.8192, 23.3223, 13.3714
YIQ	132.5780, 30.3070, -4.1010

Conversions

Conversions Part 2

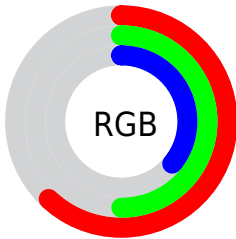
Format	Color
R_{YB}	153, 159, 92
Decimal	10452828
CIE Lab	55.40, 7.46, 23.70
CIE LCh	55, 24.844, 72.524
Yxy	23.3234, 0.3936, 0.3854
Android (android.graphics.Color)	4288642908 (0xFF9F7F5C)
YUV	132.5780, -20.0050, 23.1721
Hunter-Lab	48.2932, 3.5267, 17.3890

Details

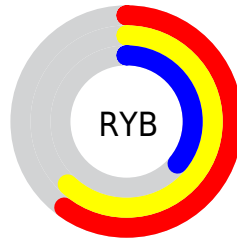
The HunterLab color $48.2932, 3.5267, 17.3890$ is a dark color, and the websafe version is hex $CC9966$. A complement of this color would be $43.8099, -3.8208, -17.4623$, and the grayscale version is $48.3326, -2.5789, 2.6260$.

A 20% lighter version of the original color is $70.0520, 3.0398, 21.2246$, and $29.4998, 3.6918, 13.2526$ is the 20% darker color. If you saturate the color by 10%, you get $46.0280, 5.7455, 19.6315$, and if you desaturate by 10%, it is $50.6629, 1.5624, 14.6746$.

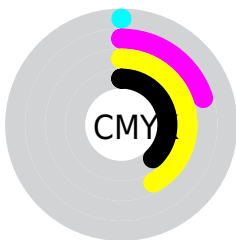
Distribution



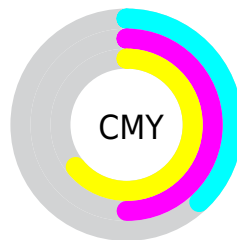
- Red (62%)
- Green (50%)
- Blue (36%)



- Red (60%)
- Yellow (62%)
- Blue (36%)



- Cyan (0%)
- Magenta (20%)
- Yellow (42%)
- Black (38%)



- Cyan (38%)
- Magenta (50%)
- Yellow (64%)

Brightness & Saturation Gradients

These gradients show how the HunterLab color 48.2932, 3.5267, 17.3890 changes by changing the brightness by 10 percent. The first figure shows a shift by +10% for each color and the second figure -10%.

Similar to the brightness gradients but the following saturation gradients show a change of the HunterLab color 48.2932, 3.5267, 17.3890 by changing the saturation by 10% instead.

■ 48.2932, 3.5267,
17.3890

■ 48.2932, 3.5267,
17.3890

164.1286, 0.2888,
33.7630

■ 38.5130, 3.6258,
15.3338

■ 69.9456, 3.1343,
21.2678

■ 29.4990, 3.6523,
13.1611

■ 81.7326, 2.8574,
23.1276

■ 21.3243, 3.5908,
10.8230

■ 94.1161, 2.5322,
24.9510

■ 14.0860, 3.4211,
9.0184

■ 107.0686, 2.1623,
26.7466

■ 7.7347, 3.7901,
5.4143

120.5662, 1.7507,
28.5210

0.0000, NaN, NaN

0.0000, NaN, NaN

134.5877, 1.2998,

30.2792

0.0000, NaN, NaN

149.1141, 0.8119,
32.0254

0.0000, NaN, NaN

■ 48.2932, 3.5267,
17.3890

■ 48.2932, 3.5267,
17.3890

■ 46.0280, 5.7455,
19.6315

■ 50.6629, 1.5624,
14.6746

■ 43.8719, 8.2310,
21.3627

■ 53.1261, -0.1529,
11.5257

■ 41.8341, 10.9809,
22.5508

■ 55.6770, -1.6348,
7.9812

■ 39.9226, 13.9840,
23.1757

■ 58.3090, -2.8985,
4.0771

■ 38.1442, 17.2142,
23.2397

■ 61.0162, -3.9594,
-0.1533

■ 36.8346, 19.8429,
23.0447

■ 63.7933, -4.8330,
-4.6799

■ 66.6354, -5.5338,
-9.4758

■ 69.5381, -6.0756,
-14.5169

■ 72.4975, -6.4712,
-19.7818

Harmonies

Analogous

The Analogous color harmony consists of three colors that are next to each other on the color wheel.



48.2943, 12.9313, 13.7256



48.2932, 3.5267, 17.3890



48.2943, -6.8074, 17.6633

Triad

The Triadic color harmony groups three colors that are evenly spaced from another and form a triangle on the color wheel.



48.2943, 3.5248, 17.3896



48.2943, -20.4631, -1.6461



48.2943, 11.5770, -13.4537

Complementary

The Complementary color scheme is a pair of colors which are on the opposite of each other on the color wheel.



48.2932, 3.5267, 17.3890



43.8099, -3.8208, -17.4623

Split Complementary

Split-complementary colors differ from the complementary color scheme. The scheme consists of three colors, the original color and two neighbors of the complement color.



48.2943, 1.7992, -19.6657



48.2932, 3.5267, 17.3890



48.2943, -16.3502, -11.9484

Square

The Square scheme is like the rectangle color scheme, but the four colors are evenly spaced on the color wheel.



48.2943, 3.5248, 17.3896



48.2943, -20.0859, 7.9605



48.2943, -8.3948, -19.0633



48.2943, 17.8415, -3.3899

Rectangle

The Rectangle color scheme consists of four colors that form a rectangle on the color wheel.



48.2932, 3.5267, 17.3890



48.2943, -12.7914, 15.9893



48.2943, -8.3948, -19.0633



48.2943, 8.5585, -16.1478

Sweetspot

The Sweet Spot groups the original color and five complimentary colors.



48.2943, 3.5248, 17.3896



74.1254, -1.9825, 11.2317



40.6083, 24.7065, -2.5723



34.8515, -0.7517, 5.8213



89.8524, -4.7943, 4.8819



37.4146, -1.9963, 2.0328

Same Dimension

The Same Dimension uses a secret algorithm to generate beautiful new colors.



48.2943, 3.5248, 17.3896



61.6467, 7.6361, 26.2270



57.2942, -11.7612, 24.6203



26.8155, -0.9610, 3.2723



32.8641, 17.3466, 20.5544



5.2689, 0.5594, 3.2565

Inverse Universe

The Inverse Universe completely reimagines the original color for something new.



43.8099, -3.8208, -17.4623



54.3704, -4.0517, -30.6269



35.3426, 11.9461, -33.0389



26.3280, -1.7816, -0.4876



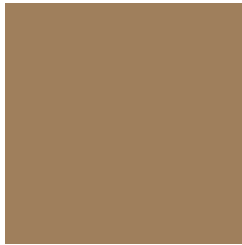
24.7690, 7.2571, -46.6251



4.4042, -0.9110, -3.5382

Previews

White Background



This preview shows how the HunterLab color 48.2932, 3.5267, 17.3890 looks on a white background.

Color Contrast Check

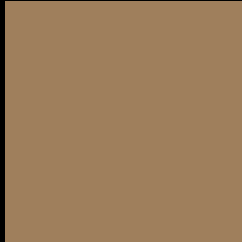
Large Text (above 18pt) WCAG AA ✓ Pass

Any Text WCAG AA × Fail

Large Text (above 18pt) WCAG AAA × Fail

Any Text WCAG AAA × Fail

Black Background



This preview shows how the HunterLab color 48.2932, 3.5267, 17.3890 looks on a black background.

Color Contrast Check

Large Text (above 18pt) WCAG AA ✓ Pass

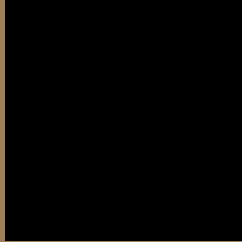
Any Text WCAG AA ✓ Pass

Large Text (above 18pt) WCAG AAA ✓ Pass

Any Text WCAG AAA × Fail

If you want to check with other color combinations, try the [Color Contrast Checker](#).

HunterLab 48.2932, 3.5267, 17.3890 Background



This preview shows how black text looks on a background with the HunterLab color 48.2932, 3.5267, 17.3890.



This preview shows how white text looks on a background with the HunterLab color 48.2932, 3.5267,

Color Blindness Simulation

Color vision deficiency is a very complex topic, and I could not describe the different causes any better than Wikipedia does, so if you want to learn more, you should check out their [article about color blindness](#).

Dichromacy



Original Color

48.2932, 3.5267, 17.3890

Protanopia

48.3972, -4.5291, 16.7697

Deuteranopia

48.2932, 3.5267, 17.3890



Tritanopia

48.3159, 12.0954, 3.6339

Trichromacy



Original Color

48.2932, 3.5267, 17.3890

Protanomaly

48.3864, -1.7224, 17.0958

Deuteranomaly

48.2932, 3.5267, 17.3890

Tritanomaly

48.3539, 8.8458, 9.3144

Monochromacy



Original Color

48.2932, 3.5267, 17.3890

Achromatopsia

48.4304, -2.5841, 2.6313

Achromatomaly

48.2612, -1.0839, 8.6630

CSS Examples

Text

The CSS property to change the color of the text to HunterLab 48.2932, 3.5267, 17.3890 is called "color". The color property can be set on classes, ids or directly on the HTML element.

This example shows how text in the color `rgb(159, 127, 92)` looks like.

```
.text, #text, p{  
    color:rgb(159, 127, 92)  
}
```

If you want to add a text shadow in that color use the text-shadow property, you can generate a text shadow directly with our [CSS Text Shadow Generator](#).

Here you see how black text with a 4 pixel rgb(159, 127, 92) colored shadow looks like.

```
.shadow{ text-shadow: 4px 4px 2px rgb(159, 127, 92) }
```

Border

The CSS property to change the border of an element to HunterLab 48.2932, 3.5267, 17.3890 is called "border". The border property can be set on classes, ids or directly on the HTML element.

This example shows the color as border, it can be applied via the CSS property "border" or "border-color".

```
.border, #border, table{ border:4px solid rgb(159, 127, 92) }
```


If only the border color should be changed use the property `border-color`.

```
.border{ border-color:rgb(159, 127, 92) }
```

If you want to add a box shadow in that color use:

Here you see how a box with a 4 pixel `rgb(159, 127, 92)` colored shadow looks like.

```
.boxshadow{ -moz-box-shadow:4px 4px 4px  
4px rgb(159, 127, 92); -webkit-box-  
shadow:4px 4px 4px 4px rgb(159, 127, 92);  
box-shadow:4px 4px 4px 4px rgb(159, 127,  
92) }
```

Background

The CSS property to change the background color of an element to HunterLab 48.2932, 3.5267, 17.3890 is called "background". The background property can be set on classes, ids or directly on the HTML element.

```
.background, #background, body{  
background: rgb(159, 127, 92) }
```

If only the background color should be changed can be used:

```
.background{ background-color: rgb(159,  
127, 92) }
```

This example shows the color as background, it is applied via the CSS property "background".

To optimize and compress your CSS code, you can use our [online CSS compressor and optimizer](#) based on csstidy. If you want to create a linear or radial gradient as background or border, check our [CSS Gradient Generator](#).

Hey! You found this booklet interesting? Support Converting Colors with the new Membership Option!

The pro membership hides all ads, plus gives you double the colors in the color bucket, and more awesome pro features!

[Learn more, Memberships starting at \\$2.50/m!](#)

**Follow me
on Twitter!**

@ConvertingColor