

Converting Colors

HunterLab(48.5010, 6.0049,
13.8014)

Have a look what the booklet for
HunterLab(48.5010, 6.0049,
13.8014) contains.

HunterLab(48.4961, 6.0770, 13.6502)	3
<i>Conversions</i>	4
<i>Details</i>	6
<i>Harmonies</i>	12
<i>Previews</i>	24
<i>Color Blindness Simulation</i>	28
<i>CSS Examples</i>	31

Color

**HunterLab(48.4961, 6.0770,
13.6502)**

Conversions

Conversions Part 1

Format	Color
Hex	A17E69
RGB	161, 126, 105
RGB Percent	63%, 49%, 41%
CMY	0.3686, 0.5059, 0.5882
CMYK	0.00, 0.22, 0.35, 0.37
HSL	23°, 23%, 52%
HSV	23°, 35%, 63%
XYZ	24.7086, 23.5187, 16.6019
YIQ	134.0710, 27.6010, 0.8890

Conversions

Conversions Part 2

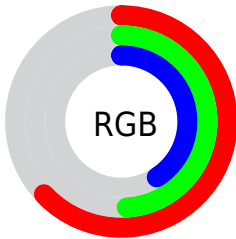
Format	Color
R_{YB}	161, 139, 105
Decimal	10583657
CIE _{Lab}	55.60, 10.48, 16.61
CIE _{LCh}	56, 19.634, 57.757
Yxy	23.5198, 0.3811, 0.3628
Android (android.graphics.Color)	4288773737 (0xFFA17E69)
YUV	134.0710, -14.3320, 23.6167
Hunter-Lab	48.4961, 6.0770, 13.6502

Details

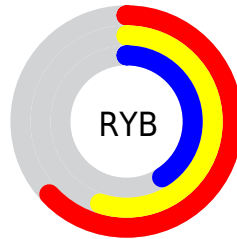
The HunterLab color $48.4961, 6.0770, 13.6502$ is a dark color, and the websafe version is hex 996666 . A complement of this color would be $49.3273, -8.0270, -10.2736$, and the grayscale version is $48.9022, -2.6093, 2.6570$.

A 20% lighter version of the original color is $70.2796, 5.8731, 16.8745$, and $29.6671, 5.8551, 10.3833$ is the 20% darker color. If you saturate the color by 10%, you get $45.5788, 9.2770, 15.9818$, and if you desaturate by 10%, it is $51.5625, 3.1267, 10.9897$.

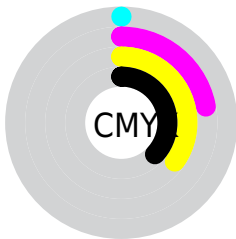
Distribution



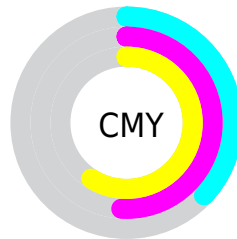
- Red (63%)
- Green (49%)
- Blue (41%)



- Red (63%)
- Yellow (55%)
- Blue (41%)



- Cyan (0%)
- Magenta (22%)
- Yellow (35%)
- Black (37%)



- Cyan (37%)
- Magenta (51%)
- Yellow (59%)

Brightness & Saturation Gradients

These gradients show how the HunterLab color 48.4961, 6.0770, 13.6502 changes by changing the brightness by 10 percent. The first figure shows a shift by +10% for each color and the second figure -10%.

Similar to the brightness gradients but the following saturation gradients show a change of the HunterLab color 48.4961, 6.0770, 13.6502 by changing the saturation by 10% instead.

■ 48.4961, 6.0770,
13.6502

■ 48.4961, 6.0770,
13.6502

164.4335, 3.9937,
26.8224

■ 38.7012, 6.0144,
12.0888

■ 70.1751, 5.9814,
16.6602

■ 29.6712, 5.8676,
10.4634

■ 81.9743, 5.8420,
18.1306

■ 21.4789, 5.6191,
8.7422

■ 94.3694, 5.6484,
19.5880

■ 14.2207, 5.2453,
6.9532

■ 107.3331, 5.4047,
21.0376

■ 7.8764, 5.3746,
5.5135

120.8414, 5.1147,
22.4832

0.0000, NaN, NaN

134.8731, 4.7812,

0.0000, NaN, NaN

23.9277

0.0000, NaN, NaN

149.4095, 4.4068,
25.3735

0.0000, NaN, NaN

■ 48.4961, 6.0770,
13.6502

■ 48.4961, 6.0770,
13.6502

■ 45.5788, 9.2770,
15.9818

■ 51.5625, 3.1267,
10.9897

■ 42.8242, 12.7392,
17.9319

■ 54.7595, 0.4179,
8.0428

■ 40.2522, 16.4556,
19.4470

■ 58.0752, -2.0690,
4.8487

■ 37.8833, 20.4011,
20.4742

■ 61.4982, -4.3532,
1.4396

■ 35.7384, 24.5226,
20.9717

■ 65.0186, -6.4537,
-2.1572

■ 33.8370, 28.7293,
20.9304

■ 68.6278, -8.3887,
-5.9194

■ 32.9382, 30.8761,
20.8369

■ 72.3185, -10.1748,
-9.8280

■ 76.0842, -11.8275,
-13.8674

■ 79.9194, -13.3605,
-18.0246

Harmonies

Analogous

The Analogous color harmony consists of three colors that are next to each other on the color wheel.



48.4972, 12.1029, 9.0942



48.4961, 6.0770, 13.6502



48.4972, -1.9741, 15.3199

Triad

The Triadic color harmony groups three colors that are evenly spaced from another and form a triangle on the color wheel.



48.4972, 6.0751, 13.6509



48.4972, -17.3051, 3.2209



48.4972, 4.9418, -12.5270

Complementary

The Complementary color scheme is a pair of colors which are on the opposite of each other on the color wheel.



48.4961, 6.0770, 13.6502



49.3273, -8.0270, -10.2736

Split Complementary

Split-complementary colors differ from the complementary color scheme. The scheme consists of three colors, the original color and two neighbors of the complement color.



48.4972, -3.2034, -14.7844



48.4961, 6.0770, 13.6502



48.4972, -15.7189, -4.8451

Square

The Square scheme is like the rectangle color scheme, but the four colors are evenly spaced on the color wheel.



48.4972, 6.0751, 13.6509



48.4972, -15.1700, 9.9523



48.4972, -10.6870, -11.7703



48.4972, 11.4187, -6.0251

Rectangle

The Rectangle color scheme consists of four colors that form a rectangle on the color wheel.



48.4961, 6.0770, 13.6502



48.4972, -7.2871, 14.8201



48.4972, -10.6870, -11.7703



48.4972, 2.2923, -13.8500

Sweetspot

The Sweet Spot groups the original color and five complimentary colors.



48.4972, 6.0751, 13.6509



75.3017, -1.0050, 8.8379



44.2580, 21.4328, -5.8335



34.9924, -0.2640, 4.4001



89.8524, -4.7943, 4.8819



37.4146, -1.9963, 2.0328

Same Dimension

The Same Dimension uses a secret algorithm to generate beautiful new colors.



48.4972, 6.0751, 13.6509



61.7576, 11.5333, 20.8043



56.1734, -7.0202, 20.3844



27.3879, -0.4732, 3.0562



29.5603, 27.2656, 18.6923



5.2201, 1.7842, 3.2478

Inverse Universe

The Inverse Universe completely reimagines the original color for something new.



49.3273, -8.0270, -10.2736



63.0931, -11.3865, -18.0682



41.5552, 5.0472, -22.4138



27.5002, -2.3530, -0.1346



30.8368, -2.6500, -32.8228



5.3489, -1.7045, -3.0062

Previews

White Background



This preview shows how the HunterLab color 48.4961, 6.0770, 13.6502 looks on a white background.

Color Contrast Check

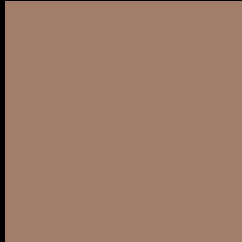
Large Text (above 18pt) WCAG AA ✓ Pass

Any Text WCAG AA × Fail

Large Text (above 18pt) WCAG AAA × Fail

Any Text WCAG AAA × Fail

Black Background



This preview shows how the HunterLab color 48.4961, 6.0770, 13.6502 looks on a black background.

Color Contrast Check

Large Text (above 18pt) WCAG AA ✓ Pass

Any Text WCAG AA ✓ Pass

Large Text (above 18pt) WCAG AAA ✓ Pass

Any Text WCAG AAA × Fail

If you want to check with other color combinations, try the [Color Contrast Checker](#).

HunterLab 48.4961, 6.0770, 13.6502 Background



This preview shows how black text looks on a background with the HunterLab color 48.4961, 6.0770, 13.6502.



This preview shows how white text looks on a background with the HunterLab color 48.4961, 6.0770,

Color Blindness Simulation

Color vision deficiency is a very complex topic, and I could not describe the different causes any better than Wikipedia does, so if you want to learn more, you should check out their [article about color blindness](#).

Dichromacy



Original Color

48.4961, 6.0770, 13.6502

Protanopia

48.4979, -3.6088, 12.4766

Deuteranopia

48.5038, 3.3651, 13.6101



Tritanopia

48.4536, 12.5882, 3.3654

Trichromacy



Original Color

48.4961, 6.0770, 13.6502

Protanomaly

48.2936, -0.0598, 12.6800

Deuteranomaly

48.4435, 4.5400, 13.5732

Tritanomaly

48.3297, 10.3432, 7.3737

Monochromacy



Original Color

48.4961, 6.0770, 13.6502

Achromatopsia

48.8260, -2.6052, 2.6528

Achromatomaly

48.5715, 0.2340, 7.0596

CSS Examples

Text

The CSS property to change the color of the text to HunterLab 48.4961, 6.0770, 13.6502 is called "color". The color property can be set on classes, ids or directly on the HTML element.

This example shows how text in the color `rgb(161, 126, 105)` looks like.

```
.text, #text, p{  
    color:rgb(161, 126, 105)  
}
```

If you want to add a text shadow in that color use the text-shadow property, you can generate a text shadow directly with our [CSS Text Shadow Generator](#).

Here you see how black text with a 4 pixel rgb(161, 126, 105) colored shadow looks like.

```
.shadow{ text-shadow: 4px 4px 2px rgb(161, 126, 105) }
```

Border

The CSS property to change the border of an element to HunterLab 48.4961, 6.0770, 13.6502 is called "border". The border property can be set on classes, ids or directly on the HTML element.

This example shows the color as border, it can be applied via the CSS property "border" or "border-color".

```
.border, #border, table{ border:4px solid rgb(161, 126, 105) }
```


If only the border color should be changed use the property `border-color`.

```
.border{ border-color:rgb(161, 126, 105) }
```

If you want to add a box shadow in that color use:

Here you see how a box with a 4 pixel `rgb(161, 126, 105)` colored shadow looks like.

```
.boxshadow{ -moz-box-shadow:4px 4px 4px  
4px rgb(161, 126, 105); -webkit-box-  
shadow:4px 4px 4px 4px rgb(161, 126, 105);  
box-shadow:4px 4px 4px 4px rgb(161, 126,  
105) }
```

Background

The CSS property to change the background color of an element to HunterLab 48.4961, 6.0770, 13.6502 is called "background". The background property can be set on classes, ids or directly on the HTML element.

```
.background, #background, body{  
background: rgb(161, 126, 105) }
```

If only the background color should be changed can be used:

```
.background{ background-color: rgb(161,  
126, 105) }
```

This example shows the color as background, it is applied via the CSS property "background".

To optimize and compress your CSS code, you can use our [online CSS compressor and optimizer](#) based on csstidy. If you want to create a linear or radial gradient as background or border, check our [CSS Gradient Generator](#).

Hey! You found this booklet interesting? Support Converting Colors with the new Membership Option!

The pro membership hides all ads, plus gives you double the colors in the color bucket, and more awesome pro features!

[Learn more, Memberships starting at \\$2.50/m!](#)

**Follow me
on Twitter!**

@ConvertingColor