

Converting Colors

HunterLab(48.5185, 4.6255,
16.8141)

Have a look what the booklet for
HunterLab(48.5185, 4.6255,
16.8141) contains.

HunterLab(48.5613, 4.5331, 16.7843)	3
<i>Conversions</i>	4
<i>Details</i>	6
<i>Harmonies</i>	12
<i>Previews</i>	24
<i>Color Blindness Simulation</i>	28
<i>CSS Examples</i>	31

Color

**HunterLab(48.5613, 4.5331,
16.7843)**

Conversions

Conversions Part 1

Format	Color
Hex	A17F5F
RGB	161, 127, 95
RGB Percent	63%, 50%, 37%
CMY	0.3686, 0.5019, 0.6274
CMYK	0.00, 0.21, 0.41, 0.37
HSL	29°, 26%, 50%
HSV	29°, 41%, 63%
XYZ	24.3528, 23.5820, 14.0947
YIQ	133.5180, 30.5360, -2.7440

Conversions

Conversions Part 2

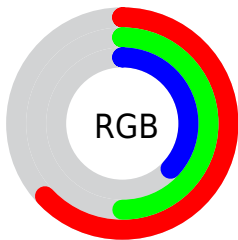
Format	Color
RYB	161, 157, 95
Decimal	10583903
CIELab	55.67, 8.66, 22.39
CIELCh	56, 24.008, 68.857
Yxy	23.5831, 0.3926, 0.3802
Android (android.graphics.Color)	4288773983 (0xFFA17F5F)
YUV	133.5180, -18.9894, 24.1017
Hunter-Lab	48.5613, 4.5331, 16.7843

Details

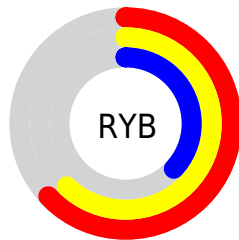
The HunterLab color $48.5613, 4.5331, 16.7843$ is a dark color, and the websafe version is hex $CC9966$. A complement of this color would be $45.5036, -5.0900, -15.9838$, and the grayscale version is $48.7003, -2.5985, 2.6460$.

A 20% lighter version of the original color is $70.3346, 4.1247, 20.4882$, and $29.7495, 4.5927, 12.8389$ is the 20% darker color. If you saturate the color by 10%, you get $46.1141, 7.0447, 19.0522$, and if you desaturate by 10%, it is $51.1253, 2.2791, 14.0686$.

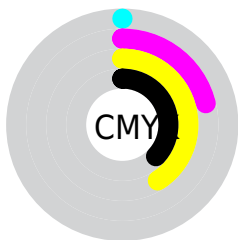
Distribution



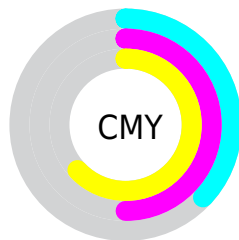
- Red (63%)
- Green (50%)
- Blue (37%)



- Red (63%)
- Yellow (62%)
- Blue (37%)



- Cyan (0%)
- Magenta (21%)
- Yellow (41%)
- Black (37%)



- Cyan (37%)
- Magenta (50%)
- Yellow (63%)

Brightness & Saturation Gradients

These gradients show how the HunterLab color 48.5613, 4.5331, 16.7843 changes by changing the brightness by 10 percent. The first figure shows a shift by +10% for each color and the second figure -10%.

Similar to the brightness gradients but the following saturation gradients show a change of the HunterLab color 48.5613, 4.5331, 16.7843 by changing the saturation by 10% instead.

■ 48.5613, 4.5331,
16.7843

■ 48.5613, 4.5331,
16.7843

164.5315, 1.7487,
32.5528

■ 38.7617, 4.5687,
14.8239

■ 70.2489, 4.2572,
20.4974

■ 29.7266, 4.5272,
12.7567

■ 82.0520, 4.0343,
22.2833

■ 21.5286, 4.3922,
10.5378

■ 94.4509, 3.7608,
24.0374

■ 14.2641, 4.1424,
8.6418

■ 107.4181, 3.4405,
25.7677

■ 7.9214, 4.3405,
5.5449

120.9298, 3.0767,
27.4801

0.0000, NaN, NaN

0.0000, NaN, NaN

134.9648, 2.6719,

29.1794

0.0000, NaN, NaN

149.5043, 2.2286,
30.8693

0.0000, NaN, NaN

■ 48.5613, 4.5331,
16.7843

■ 48.5613, 4.5331,
16.7843

■ 46.1141, 7.0447,
19.0522

■ 51.1253, 2.2791,
14.0686

■ 43.7904, 9.8266,
20.8278

■ 53.7933, 0.2764,
10.9459

■ 41.6020, 12.8755,
22.0725

■ 56.5579, -1.4920,
7.4572

■ 39.5594, 16.1772,
22.7577

■ 59.4113, -3.0427,
3.6394

■ 37.6727, 19.6999,
22.8764

■ 62.3465, -4.3922,
-0.4742

■ 36.1050, 22.9751,
22.6500

■ 65.3572, -5.5570,
-4.8542

■ 68.4380, -6.5525,
-9.4745

■ 71.5837, -7.3933,
-14.3125

■ 74.7900, -8.0928,
-19.3483

Harmonies

Analogous

The Analogous color harmony consists of three colors that are next to each other on the color wheel.



48.5624, 13.2887, 12.7672



48.5613, 4.5331, 16.7843



48.5624, -5.5162, 17.4547

Triad

The Triadic color harmony groups three colors that are evenly spaced from another and form a triangle on the color wheel.



48.5624, 4.5312, 16.7849



48.5624, -20.1542, -0.2552



48.5624, 10.0552, -13.8482

Complementary

The Complementary color scheme is a pair of colors which are on the opposite of each other on the color wheel.



48.5613, 4.5331, 16.7843



45.5036, -5.0900, -15.9838

Split Complementary

Split-complementary colors differ from the complementary color scheme. The scheme consists of three colors, the original color and two neighbors of the complement color.



48.5624, 0.3995, -19.1005



48.5613, 4.5331, 16.7843



48.5624, -16.6656, -10.2754

Square

The Square scheme is like the rectangle color scheme, but the four colors are evenly spaced on the color wheel.



48.5624, 4.5312, 16.7849



48.5624, -19.2430, 8.7835



48.5624, -9.3302, -17.6753



48.5624, 16.6529, -4.4206

Rectangle

The Rectangle color scheme consists of four colors that form a rectangle on the color wheel.



48.5613, 4.5331, 16.7843



48.5624, -11.5215, 16.0790



48.5624, -9.3302, -17.6753



48.5624, 7.0294, -16.2391

Sweetspot

The Sweet Spot groups the original color and five complimentary colors.



48.5624, 4.5312, 16.7849



75.2262, -1.7213, 10.5796



41.6525, 24.6424, -3.5157



35.0202, -0.6791, 5.2238



89.8524, -4.7943, 4.8819



37.4146, -1.9963, 2.0328

Same Dimension

The Same Dimension uses a secret algorithm to generate beautiful new colors.



48.5624, 4.5312, 16.7849



62.0561, 9.0496, 25.2017



57.8880, -10.9039, 24.3905



27.6158, -0.8585, 3.3039



32.3918, 20.2385, 20.3140



5.6130, 1.0091, 3.4763

Inverse Universe

The Inverse Universe completely reimagines the original color for something new.



45.5036, -5.0900, -15.9838



57.1419, -6.2489, -27.5554



36.5928, 10.8133, -31.8947



27.2673, -1.9720, -0.4170



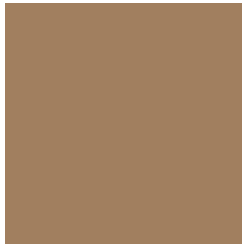
26.5887, 4.7942, -43.5829



4.9273, -1.0963, -3.7920

Previews

White Background



This preview shows how the HunterLab color 48.5613, 4.5331, 16.7843 looks on a white background.

Color Contrast Check

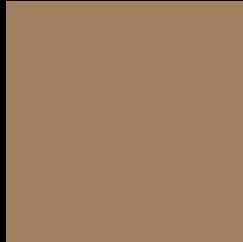
Large Text (above 18pt) WCAG AA ✓ Pass

Any Text WCAG AA × Fail

Large Text (above 18pt) WCAG AAA × Fail

Any Text WCAG AAA × Fail

Black Background



This preview shows how the HunterLab color 48.5613, 4.5331, 16.7843 looks on a black background.

Color Contrast Check

Large Text (above 18pt) WCAG AA ✓ Pass

Any Text WCAG AA ✓ Pass

Large Text (above 18pt) WCAG AAA ✓ Pass

Any Text WCAG AAA × Fail

If you want to check with other color combinations, try the [Color Contrast Checker](#).

HunterLab 48.5613, 4.5331, 16.7843 Background



This preview shows how black text looks on a background with the HunterLab color 48.5613, 4.5331, 16.7843.



This preview shows how white text looks on a background with the HunterLab color 48.5613, 4.5331,

Color Blindness Simulation

Color vision deficiency is a very complex topic, and I could not describe the different causes any better than Wikipedia does, so if you want to learn more, you should check out their [article about color blindness](#).

Dichromacy



Original Color

48.5613, 4.5331, 16.7843

Protanopia

48.4732, -4.1096, 15.6632

Deuteranopia

48.6163, 3.3439, 16.8123



Tritanopia

48.5637, 12.9364, 3.4999

Trichromacy



Original Color

48.5613, 4.5331, 16.7843

Protanomaly

48.5589, -0.9767, 16.0962

Deuteranomaly

48.7218, 3.6975, 16.9121

Tritanomaly

48.6207, 9.8062, 8.8489

Monochromacy



Original Color

48.5613, 4.5331, 16.7843

Achromatopsia

48.8260, -2.6052, 2.6528

Achromatomaly

48.4953, -0.1795, 8.1548

CSS Examples

Text

The CSS property to change the color of the text to HunterLab 48.5613, 4.5331, 16.7843 is called "color". The color property can be set on classes, ids or directly on the HTML element.

This example shows how text in the color `rgb(161, 127, 95)` looks like.

```
.text, #text, p{  
    color:rgb(161, 127, 95)  
}
```

If you want to add a text shadow in that color use the text-shadow property, you can generate a text shadow directly with our [CSS Text Shadow Generator](#).

Here you see how black text with a 4 pixel rgb(161, 127, 95) colored shadow looks like.

```
.shadow{ text-shadow: 4px 4px 2px rgb(161, 127, 95) }
```

Border

The CSS property to change the border of an element to HunterLab 48.5613, 4.5331, 16.7843 is called "border". The border property can be set on classes, ids or directly on the HTML element.

This example shows the color as border, it can be applied via the CSS property "border" or "border-color".

```
.border, #border, table{ border:4px solid rgb(161, 127, 95) }
```


If only the border color should be changed use the property `border-color`.

```
.border{ border-color:rgb(161, 127, 95) }
```

If you want to add a box shadow in that color use:

Here you see how a box with a 4 pixel `rgb(161, 127, 95)` colored shadow looks like.

```
.boxshadow{ -moz-box-shadow:4px 4px 4px  
4px rgb(161, 127, 95); -webkit-box-  
shadow:4px 4px 4px 4px rgb(161, 127, 95);  
box-shadow:4px 4px 4px 4px rgb(161, 127,  
95) }
```

Background

The CSS property to change the background color of an element to HunterLab 48.5613, 4.5331, 16.7843 is called "background". The background property can be set on classes, ids or directly on the HTML element.

```
.background, #background, body{  
background: rgb(161, 127, 95) }
```

If only the background color should be changed can be used:

```
.background{ background-color: rgb(161,  
127, 95) }
```

This example shows the color as background, it is applied via the CSS property "background".

To optimize and compress your CSS code, you can use our [online CSS compressor and optimizer](#) based on csstidy. If you want to create a linear or radial gradient as background or border, check our [CSS Gradient Generator](#).

Hey! You found this booklet interesting? Support Converting Colors with the new Membership Option!

The pro membership hides all ads, plus gives you double the colors in the color bucket, and more awesome pro features!

[Learn more, Memberships starting at \\$2.50/m!](#)

**Follow me
on Twitter!**

@ConvertingColor