

Converting Colors

HunterLab(48.5925, 4.6930,
16.3435)

Have a look what the booklet for
HunterLab(48.5925, 4.6930,
16.3435) contains.

HunterLab(48.5993, 4.7352, 16.2325)	3
<i>Conversions</i>	4
<i>Details</i>	6
<i>Harmonies</i>	12
<i>Previews</i>	24
<i>Color Blindness Simulation</i>	28
<i>CSS Examples</i>	31

Color

**HunterLab(48.5993, 4.7352,
16.2325)**

Conversions

Conversions Part 1

Format	Color
Hex	A17F61
RGB	161, 127, 97
RGB Percent	63%, 50%, 38%
CMY	0.3686, 0.5019, 0.6196
CMYK	0.00, 0.21, 0.40, 0.37
HSL	28°, 25%, 51%
HSV	28°, 40%, 63%
XYZ	24.4450, 23.6189, 14.5798
YIQ	133.7460, 29.8940, -2.1220

Conversions

Conversions Part 2

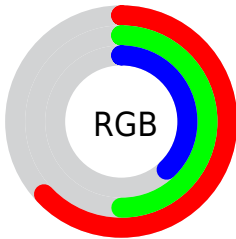
Format	Color
R_{YB}	161, 153, 97
Decimal	10583905
CIE _{Lab}	55.71, 8.90, 21.31
CIE _{LCh}	56, 23.092, 67.334
Yxy	23.6200, 0.3902, 0.3770
Android (android.graphics.Color)	4288773985 (0xFFA17F61)
YUV	133.7460, -18.1158, 23.9018
Hunter-Lab	48.5993, 4.7352, 16.2325

Details

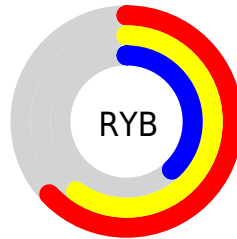
The HunterLab color $48.5993, 4.7352, 16.2325$ is a dark color, and the websafe version is hex $CC9966$. A complement of this color would be $46.2023, -5.5985, -14.8981$, and the grayscale version is $48.7875, -2.6032, 2.6507$.

A 20% lighter version of the original color is $70.3792, 4.3641, 19.8412$, and $29.7779, 4.7422, 12.4237$ is the 20% darker color. If you saturate the color by 10%, you get $46.0796, 7.3381, 18.5311$, and if you desaturate by 10%, it is $51.2399, 2.3886, 13.5038$.

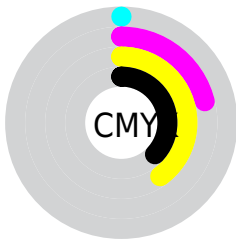
Distribution



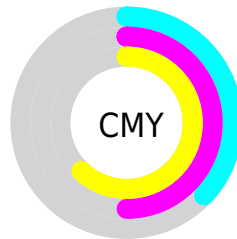
- Red (63%)
- Green (50%)
- Blue (38%)



- Red (63%)
- Yellow (60%)
- Blue (38%)



- Cyan (0%)
- Magenta (21%)
- Yellow (40%)
- Black (37%)



- Cyan (37%)
- Magenta (50%)
- Yellow (62%)

Brightness & Saturation Gradients

These gradients show how the HunterLab color 48.5993, 4.7352, 16.2325 changes by changing the brightness by 10 percent. The first figure shows a shift by +10% for each color and the second figure -10%.

Similar to the brightness gradients but the following saturation gradients show a change of the HunterLab color 48.5993, 4.7352, 16.2325 by changing the saturation by 10% instead.

■ 48.5993, 4.7352,
16.2325

■ 48.5993, 4.7352,
16.2325

164.5885, 2.0415,
31.5071

■ 38.7969, 4.7581,
14.3483

■ 70.2918, 4.4826,
19.8114

■ 29.7588, 4.7030,
12.3655

■ 82.0973, 4.2705,
21.5372

■ 21.5576, 4.5535,
10.2416

■ 94.4983, 4.0073,
23.2349

■ 14.2893, 4.2877,
8.3289

■ 107.4676, 3.6970,
24.9118

■ 7.9474, 4.4546,
5.5632

120.9813, 3.3427,
26.5736

0.0000, NaN, NaN

0.0000, NaN, NaN

135.0182, 2.9471,

28.2245

0.0000, NaN, NaN

149.5596, 2.5128,
29.8681

0.0000, NaN, NaN

■ 48.5993, 4.7352,
16.2325

■ 48.5993, 4.7352,
16.2325

■ 46.0796, 7.3381,
18.5311

■ 51.2399, 2.3886,
13.5038

■ 43.6883, 10.2105,
20.3532

■ 53.9879, 0.2915,
10.3865

■ 41.4383, 13.3490,
21.6574

■ 56.8352, -1.5738,
6.9217

■ 39.3414, 16.7392,
22.4105

■ 59.7736, -3.2241,
3.1460

■ 37.4092, 20.3481,
22.5992

■ 62.7957, -4.6765,
-0.9081

■ 35.6432, 24.0789,
22.3655

■ 65.8951, -5.9477,
-5.2120

■ 35.6010, 24.1710,
22.3603

■ 69.0658, -7.0534,
-9.7407

■ 72.3027, -8.0082,
-14.4725

■ 75.6013, -8.8254,
-19.3886

Harmonies

Analogous

The Analogous color harmony consists of three colors that are next to each other on the color wheel.



48.6004, 12.9895, 12.1455



48.5993, 4.7352, 16.2325



48.6004, -4.9326, 17.0518

Triad

The Triadic color harmony groups three colors that are evenly spaced from another and form a triangle on the color wheel.



48.6004, 4.7333, 16.2331



48.6004, -19.6015, 0.3472



48.6004, 9.1282, -13.5124

Complementary

The Complementary color scheme is a pair of colors which are on the opposite of each other on the color wheel.



48.5993, 4.7352, 16.2325



46.2023, -5.5985, -14.8981

Split Complementary

Split-complementary colors differ from the complementary color scheme. The scheme consists of three colors, the original color and two neighbors of the complement color.



48.6004, -0.2140, -18.2217



48.5993, 4.7352, 16.2325



48.6004, -16.4351, -9.2702

Square

The Square scheme is like the rectangle color scheme, but the four colors are evenly spaced on the color wheel.



48.6004, 4.7333, 16.2331



48.6004, -18.5013, 8.9445



48.6004, -9.5148, -16.5347



48.6004, 15.6613, -4.6289

Rectangle

The Rectangle color scheme consists of four colors that form a rectangle on the color wheel.



48.5993, 4.7352, 16.2325



48.6004, -10.7944, 15.8154



48.6004, -9.5148, -16.5347



48.6004, 6.1851, -15.7075

Sweetspot

The Sweet Spot groups the original color and five complimentary colors.



48.6004, 4.7333, 16.2331



75.1050, -1.5161, 10.4509



42.1533, 23.9590, -3.8750



34.9580, -0.5737, 5.1583



89.8524, -4.7943, 4.8819



37.4146, -1.9963, 2.0328

Same Dimension

The Same Dimension uses a secret algorithm to generate beautiful new colors.



48.6004, 4.7333, 16.2331



61.9461, 9.5103, 24.5620



57.6113, -10.2522, 23.6813



27.5823, -0.8021, 3.2676



31.9420, 21.3004, 20.0554



5.5571, 1.1155, 3.4438

Inverse Universe

The Inverse Universe completely reimagines the original color for something new.



46.2023, -5.5985, -14.8981



58.0516, -7.1204, -26.0284



37.5018, 9.7548, -30.0290



27.3013, -2.0279, -0.3755



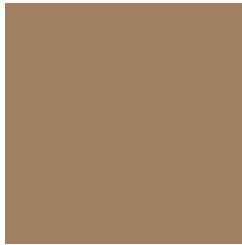
27.1886, 3.6709, -41.9078



4.9902, -1.1897, -3.6691

Previews

White Background



This preview shows how the HunterLab color 48.5993, 4.7352, 16.2325 looks on a white background.

Color Contrast Check

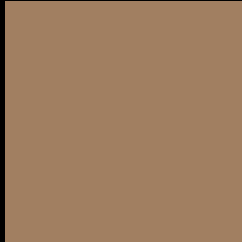
Large Text (above 18pt) WCAG AA ✓ Pass

Any Text WCAG AA × Fail

Large Text (above 18pt) WCAG AAA × Fail

Any Text WCAG AAA × Fail

Black Background



This preview shows how the HunterLab color 48.5993, 4.7352, 16.2325 looks on a black background.

Color Contrast Check

Large Text (above 18pt) WCAG AA ✓ Pass

Any Text WCAG AA ✓ Pass

Large Text (above 18pt) WCAG AAA ✓ Pass

Any Text WCAG AAA × Fail

If you want to check with other color combinations, try the [Color Contrast Checker](#).

HunterLab 48.5993, 4.7352, 16.2325 Background



This preview shows how black text looks on a background with the HunterLab color 48.5993, 4.7352, 16.2325.



This preview shows how white text looks on a background with the HunterLab color 48.5993, 4.7352,

Color Blindness Simulation

Color vision deficiency is a very complex topic, and I could not describe the different causes any better than Wikipedia does, so if you want to learn more, you should check out their [article about color blindness](#).

Dichromacy



Original Color

48.5993, 4.7352, 16.2325

Protanopia

48.7954, -4.3533, 15.3417

Deuteranopia

48.5495, 3.1952, 16.1607



Tritanopia

48.4536, 12.5882, 3.3654

Trichromacy



Original Color

48.5993, 4.7352, 16.2325

Protanomaly

48.5978, -0.7650, 15.5309

Deuteranomaly

48.6542, 3.5467, 16.2611

Tritanomaly

48.5116, 9.4541, 8.7277

Monochromacy



Original Color

48.5993, 4.7352, 16.2325

Achromatopsia

48.8260, -2.6052, 2.6528

Achromatomaly

48.5205, -0.0429, 7.7931

CSS Examples

Text

The CSS property to change the color of the text to HunterLab 48.5993, 4.7352, 16.2325 is called "color". The color property can be set on classes, ids or directly on the HTML element.

This example shows how text in the color `rgb(161, 127, 97)` looks like.

```
.text, #text, p{  
    color:rgb(161, 127, 97)  
}
```

If you want to add a text shadow in that color use the text-shadow property, you can generate a text shadow directly with our [CSS Text Shadow Generator](#).

Here you see how black text with a 4 pixel rgb(161, 127, 97) colored shadow looks like.

```
.shadow{ text-shadow: 4px 4px 2px rgb(161, 127, 97) }
```

Border

The CSS property to change the border of an element to HunterLab 48.5993, 4.7352, 16.2325 is called "border". The border property can be set on classes, ids or directly on the HTML element.

This example shows the color as border, it can be applied via the CSS property "border" or "border-color".

```
.border, #border, table{ border:4px solid rgb(161, 127, 97) }
```


If only the border color should be changed use the property `border-color`.

```
.border{ border-color:rgb(161, 127, 97) }
```

If you want to add a box shadow in that color use:

Here you see how a box with a 4 pixel `rgb(161, 127, 97)` colored shadow looks like.

```
.boxshadow{ -moz-box-shadow:4px 4px 4px  
4px rgb(161, 127, 97); -webkit-box-  
shadow:4px 4px 4px 4px rgb(161, 127, 97);  
box-shadow:4px 4px 4px 4px rgb(161, 127,  
97) }
```

Background

The CSS property to change the background color of an element to HunterLab 48.5993, 4.7352, 16.2325 is called "background". The background property can be set on classes, ids or directly on the HTML element.

```
.background, #background, body{  
background: rgb(161, 127, 97) }
```

If only the background color should be changed can be used:

```
.background{ background-color: rgb(161,  
127, 97) }
```

This example shows the color as background, it is applied via the CSS property "background".

To optimize and compress your CSS code, you can use our [online CSS compressor and optimizer](#) based on csstidy. If you want to create a linear or radial gradient as background or border, check our [CSS Gradient Generator](#).

Hey! You found this booklet interesting? Support Converting Colors with the new Membership Option!

The pro membership hides all ads, plus gives you double the colors in the color bucket, and more awesome pro features!

[Learn more, Memberships starting at \\$2.50/m!](#)

**Follow me
on Twitter!**

@ConvertingColor