

Converting Colors

HunterLab(48.6527, 3.9358,
13.0980)

Have a look what the booklet for
HunterLab(48.6527, 3.9358,
13.0980) contains.

HunterLab(48.6497, 3.9396, 13.0945)	3
<i>Conversions</i>	4
<i>Details</i>	6
<i>Harmonies</i>	12
<i>Previews</i>	24
<i>Color Blindness Simulation</i>	28
<i>CSS Examples</i>	31

Color

**HunterLab(48.6497, 3.9396,
13.0945)**

Conversions

Conversions Part 1

Format	Color
Hex	9D806B
RGB	157, 128, 107
RGB Percent	62%, 50%, 42%
CMY	0.3843, 0.4980, 0.5804
CMYK	0.00, 0.18, 0.32, 0.38
HSL	25°, 20%, 52%
HSV	25°, 32%, 62%
XYZ	24.2776, 23.6679, 17.1987
YIQ	134.2770, 24.0250, -0.3830

Conversions

Conversions Part 2

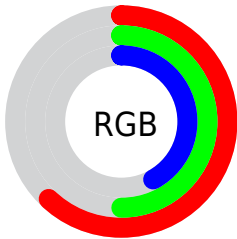
Format	Color
R_{YB}	157, 143, 107
Decimal	10322027
CIE _{Lab}	55.75, 7.96, 15.60
CIE _{LCh}	56, 17.514, 62.977
Yxy	23.6690, 0.3727, 0.3633
Android (android.graphics.Color)	4288512107 (0xFF9D806B)
YUV	134.2770, -13.4476, 19.9281
Hunter-Lab	48.6497, 3.9396, 13.0945

Details

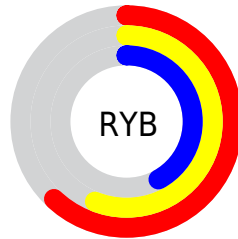
The HunterLab color $48.6497, 3.9396, 13.0945$ is a dark color, and the websafe version is hex 996666 . A complement of this color would be $48.1328, -6.5281, -9.7474$, and the grayscale version is $48.9814, -2.6135, 2.6612$.

A 20% lighter version of the original color is $70.3658, 3.3085, 16.1609$, and $29.8688, 4.1280, 9.9914$ is the 20% darker color. If you saturate the color by 10%, you get $45.9328, 6.6305, 15.5559$, and if you desaturate by 10%, it is $51.4908, 1.4876, 10.2899$.

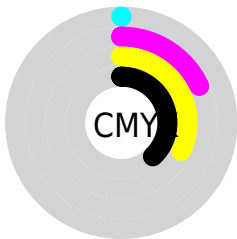
Distribution



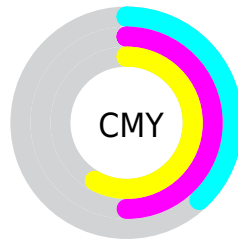
- Red (62%)
- Green (50%)
- Blue (42%)



- Red (62%)
- Yellow (56%)
- Blue (42%)



- Cyan (0%)
- Magenta (18%)
- Yellow (32%)
- Black (38%)



- Cyan (38%)
- Magenta (50%)
- Yellow (58%)

Brightness & Saturation Gradients

These gradients show how the HunterLab color 48.6497, 3.9396, 13.0945 changes by changing the brightness by 10 percent. The first figure shows a shift by +10% for each color and the second figure -10%.

Similar to the brightness gradients but the following saturation gradients show a change of the HunterLab color 48.6497, 3.9396, 13.0945 by changing the saturation by 10% instead.

■ 48.6497, 3.9396,
13.0945

■ 48.6497, 3.9396,
13.0945

164.6642, 0.8802,
25.8243

■ 38.8436, 4.0142,
11.6014

■ 70.3488, 3.5929,
15.9845

■ 29.8016, 4.0143,
10.0521

■ 82.1573, 3.3372,
17.4011

■ 21.5960, 3.9246,
8.4174

■ 94.5612, 3.0323,
18.8080

■ 14.3228, 3.7244,
6.6799

■ 107.5332, 2.6820,
20.2098

■ 7.9819, 3.9179,
5.5873

121.0495, 2.2892,
21.6100

0.0000, NaN, NaN

0.0000, NaN, NaN

135.0890, 1.8566,

23.0112

0.0000, NaN, NaN

149.6329, 1.3863,
24.4154

0.0000, NaN, NaN

■ 48.6497, 3.9396,
13.0945

■ 48.6497, 3.9396,
13.0945

■ 45.9328, 6.6305,
15.5559

■ 51.4908, 1.4876,
10.2899

■ 43.3496, 9.5763,
17.6268

■ 54.4412, -0.7354,
7.1812

■ 40.9150, 12.7784,
19.2604

■ 57.4922, -2.7482,
3.8049

■ 38.6444, 16.2274,
20.4102

■ 60.6347, -4.5685,
0.1924

■ 36.5534, 19.8961,
21.0389

■ 63.8611, -6.2136,
-3.6294

■ 34.6570, 23.7315,
21.1310

■ 67.1644, -7.6997,
-7.6377

■ 33.2547, 26.8814,
20.9620

■ 70.5388, -9.0421,
-11.8131

■ 73.9789, -10.2544,
-16.1388

■ 77.4802, -11.3491,
-20.6008

Harmonies

Analogous

The Analogous color harmony consists of three colors that are next to each other on the color wheel.



48.6508, 9.7322, 9.3634



48.6497, 3.9396, 13.0945



48.6508, -3.3245, 14.1745

Triad

The Triadic color harmony groups three colors that are evenly spaced from another and form a triangle on the color wheel.



48.6508, 3.9378, 13.0952



48.6508, -15.8247, 1.9504



48.6508, 5.2714, -9.9232

Complementary

The Complementary color scheme is a pair of colors which are on the opposite of each other on the color wheel.



48.6497, 3.9396, 13.0945



48.1328, -6.5281, -9.7474

Split Complementary

Split-complementary colors differ from the complementary color scheme. The scheme consists of three colors, the original color and two neighbors of the complement color.



48.6508, -1.8682, -12.6446



48.6497, 3.9396, 13.0945



48.6508, -13.8116, -5.1859

Square

The Square scheme is like the rectangle color scheme, but the four colors are evenly spaced on the color wheel.



48.6508, 3.9378, 13.0952



48.6508, -14.4702, 8.3273



48.6508, -8.8070, -10.7958



48.6508, 10.5334, -3.8105

Rectangle

The Rectangle color scheme consists of four colors that form a rectangle on the color wheel.



48.6497, 3.9396, 13.0945



48.6508, -7.9520, 13.3977



48.6508, -8.8070, -10.7958



48.6508, 2.9970, -11.3025

Sweetspot

The Sweet Spot groups the original color and five complimentary colors.



48.6508, 3.9378, 13.0952



73.5221, -1.4484, 8.8864



44.1203, 18.3430, -3.8770



34.2427, -0.5086, 4.4356



88.7363, -4.7347, 4.8212



36.4511, -1.9449, 1.9805

Same Dimension

The Same Dimension uses a secret algorithm to generate beautiful new colors.



48.6508, 3.9378, 13.0952



62.5839, 7.7151, 19.8450



55.6395, -7.7897, 19.3256



26.6105, -0.6154, 3.0500



30.0866, 23.9313, 18.9582



4.9357, 1.1878, 3.0622

Inverse Universe

The Inverse Universe completely reimagines the original color for something new.



48.1328, -6.5281, -9.7474



61.7436, -9.1227, -16.9701



41.1894, 5.2829, -20.4426



26.5368, -2.1242, -0.2338



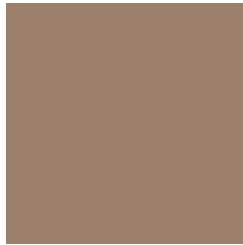
28.5224, 0.2886, -36.2735



4.7746, -1.4510, -2.8356

Previews

White Background



This preview shows how the HunterLab color 48.6497, 3.9396, 13.0945 looks on a white background.

Color Contrast Check

Large Text (above 18pt) WCAG AA ✓ Pass

Any Text WCAG AA × Fail

Large Text (above 18pt) WCAG AAA × Fail

Any Text WCAG AAA × Fail

Black Background



This preview shows how the HunterLab color 48.6497, 3.9396, 13.0945 looks on a black background.

Color Contrast Check

Large Text (above 18pt) WCAG AA ✓ Pass

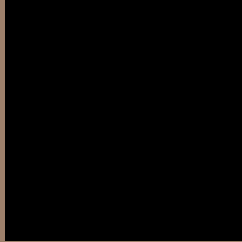
Any Text WCAG AA ✓ Pass

Large Text (above 18pt) WCAG AAA ✓ Pass

Any Text WCAG AAA × Fail

If you want to check with other color combinations, try the [Color Contrast Checker](#).

HunterLab 48.6497, 3.9396, 13.0945 Background



This preview shows how black text looks on a background with the HunterLab color 48.6497, 3.9396, 13.0945.



This preview shows how white text looks on a background with the HunterLab color 48.6497, 3.9396,

Color Blindness Simulation

Color vision deficiency is a very complex topic, and I could not describe the different causes any better than Wikipedia does, so if you want to learn more, you should check out their [article about color blindness](#).

Dichromacy



Original Color

48.6497, 3.9396, 13.0945

Protanopia

48.6329, -3.0484, 11.9296

Deuteranopia

48.5467, 3.5946, 12.9890



Tritanopia

48.5902, 10.5092, 2.6043

Trichromacy



Original Color

48.6497, 3.9396, 13.0945

Protanomaly

48.5178, -0.6216, 12.2053

Deuteranomaly

48.5467, 3.5946, 12.9890

Tritanomaly

48.4700, 8.2383, 6.6857

Monochromacy



Original Color

48.6497, 3.9396, 13.0945

Achromatopsia

48.8260, -2.6052, 2.6528

Achromatomaly

48.6914, -0.7295, 6.7712

CSS Examples

Text

The CSS property to change the color of the text to HunterLab 48.6497, 3.9396, 13.0945 is called "color". The color property can be set on classes, ids or directly on the HTML element.

This example shows how text in the color `rgb(157, 128, 107)` looks like.

```
.text, #text, p{  
    color:rgb(157, 128, 107)  
}
```

If you want to add a text shadow in that color use the text-shadow property, you can generate a text shadow directly with our [CSS Text Shadow Generator](#).

Here you see how black text with a 4 pixel rgb(157, 128, 107) colored shadow looks like.

```
.shadow{ text-shadow: 4px 4px 2px rgb(157, 128, 107) }
```

Border

The CSS property to change the border of an element to HunterLab 48.6497, 3.9396, 13.0945 is called "border". The border property can be set on classes, ids or directly on the HTML element.

This example shows the color as border, it can be applied via the CSS property "border" or "border-color".

```
.border, #border, table{ border:4px solid rgb(157, 128, 107) }
```


If only the border color should be changed use the property `border-color`.

```
.border{ border-color:rgb(157, 128, 107) }
```

If you want to add a box shadow in that color use:

Here you see how a box with a 4 pixel `rgb(157, 128, 107)` colored shadow looks like.

```
.boxshadow{ -moz-box-shadow:4px 4px 4px  
4px rgb(157, 128, 107); -webkit-box-  
shadow:4px 4px 4px 4px rgb(157, 128, 107);  
box-shadow:4px 4px 4px 4px rgb(157, 128,  
107) }
```

Background

The CSS property to change the background color of an element to HunterLab 48.6497, 3.9396, 13.0945 is called "background". The background property can be set on classes, ids or directly on the HTML element.

```
.background, #background, body{  
background: rgb(157, 128, 107) }
```

If only the background color should be changed can be used:

```
.background{ background-color: rgb(157,  
128, 107) }
```

This example shows the color as background, it is applied via the CSS property "background".

To optimize and compress your CSS code, you can use our [online CSS compressor and optimizer](#) based on csstidy. If you want to create a linear or radial gradient as background or border, check our [CSS Gradient Generator](#).

Hey! You found this booklet interesting? Support Converting Colors with the new Membership Option!

The pro membership hides all ads, plus gives you double the colors in the color bucket, and more awesome pro features!

[Learn more, Memberships starting at \\$2.50/m!](#)

**Follow me
on Twitter!**

@ConvertingColor