

Converting Colors

HunterLab(48.6541, 3.5056,
14.4317)

Have a look what the booklet for
HunterLab(48.6541, 3.5056,
14.4317) contains.

HunterLab(48.5651, 3.4870, 14.3209)	3
<i>Conversions</i>	4
<i>Details</i>	6
<i>Harmonies</i>	12
<i>Previews</i>	24
<i>Color Blindness Simulation</i>	28
<i>CSS Examples</i>	31

Color

**HunterLab(48.5651, 3.4870,
14.3209)**

Conversions

Conversions Part 1

Format	Color
Hex	9D8067
RGB	157, 128, 103
RGB Percent	62%, 50%, 40%
CMY	0.3843, 0.4980, 0.5961
CMYK	0.00, 0.18, 0.34, 0.38
HSL	28°, 22%, 51%
HSV	28°, 34%, 62%
XYZ	24.0719, 23.5857, 16.1157
YIQ	133.8210, 25.3090, -1.6270

Conversions

Conversions Part 2

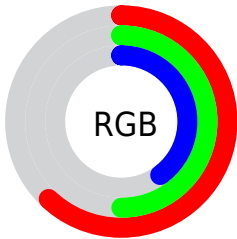
Format	Color
RYB	157, 150, 103
Decimal	10322023
CIELab	55.67, 7.42, 17.78
CIElCh	56, 19.263, 67.350
Yxy	23.5868, 0.3775, 0.3698
Android (android.graphics.Color)	4288512103 (0xFF9D8067)
YUV	133.8210, -15.1948, 20.3280
Hunter-Lab	48.5651, 3.4870, 14.3209

Details

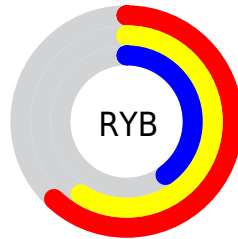
The HunterLab color $48.5651, 3.4870, 14.3209$ is a dark color, and the websafe version is hex 996666 . A complement of this color would be $46.7115, -5.5850, -11.8021$, and the grayscale version is $48.8072, -2.6042, 2.6518$.

A 20% lighter version of the original color is $70.2694, 2.7899, 17.5534$, and $29.8006, 3.7669, 10.9852$ is the 20% darker color. If you saturate the color by 10%, you get $46.0345, 5.9184, 16.7734$, and if you desaturate by 10%, it is $51.2092, 1.2979, 11.4795$.

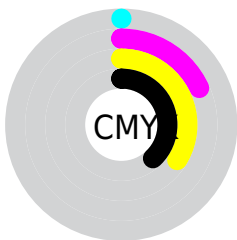
Distribution



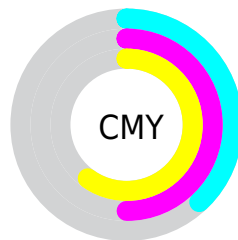
- Red (62%)
- Green (50%)
- Blue (40%)



- Red (62%)
- Yellow (59%)
- Blue (40%)



- Cyan (0%)
- Magenta (18%)
- Yellow (34%)
- Black (38%)



- Cyan (38%)
- Magenta (50%)
- Yellow (60%)

Brightness & Saturation Gradients

These gradients show how the HunterLab color 48.5651, 3.4870, 14.3209 changes by changing the brightness by 10 percent. The first figure shows a shift by +10% for each color and the second figure -10%.

Similar to the brightness gradients but the following saturation gradients show a change of the HunterLab color 48.5651, 3.4870, 14.3209 by changing the saturation by 10% instead.

■ 48.5651, 3.4870,
14.3209

■ 48.5651, 3.4870,
14.3209

164.5371, 0.2217,
28.0103

■ 38.7652, 3.5905,
12.6804

■ 70.2532, 3.0873,
17.4705

■ 29.7298, 3.6216,
10.9674

■ 82.0565, 2.8070,
19.0037

■ 21.5315, 3.5654,
9.1474

■ 94.4556, 2.4787,
20.5202

■ 14.2666, 3.4019,
7.3010

■ 107.4230, 2.1059,
22.0257

■ 7.9240, 3.6560,
5.5468

120.9349, 1.6914,
23.5246

0.0000, NaN, NaN

134.9701, 1.2379,

0.0000, NaN, NaN

25.0200

0.0000, NaN, NaN

149.5098, 0.7473,
26.5145

0.0000, NaN, NaN

■ 48.5651, 3.4870,
14.3209

■ 48.5651, 3.4870,
14.3209

■ 46.0345, 5.9184,
16.7734

■ 51.2092, 1.2979,
11.4795

■ 43.6244, 8.6076,
18.7918

■ 53.9538, -0.6577,
8.2881

■ 41.3474, 11.5562,
20.3336

■ 56.7914, -2.3976,
4.7844

■ 39.2152, 14.7573,
21.3603

■ 59.7145, -3.9386,
1.0018

■ 37.2399, 18.1883,
21.8457

■ 62.7160, -5.2970,
-3.0307

■ 35.4320, 21.8045,
21.7918

■ 65.7901, -6.4887,
-7.2874

■ 34.4866, 23.8463,
21.6679

■ 68.9312, -7.5283,
-11.7461

■ 72.1347, -8.4294,
-16.3877

■ 75.3962, -9.2045,
-21.1955

Harmonies

Analogous

The Analogous color harmony consists of three colors that are next to each other on the color wheel.



48.5662, 10.2758, 10.7241



48.5651, 3.4870, 14.3209



48.5662, -4.5502, 15.0528

Triad

The Triadic color harmony groups three colors that are evenly spaced from another and form a triangle on the color wheel.



48.5662, 3.4852, 14.3216



48.5662, -16.9545, 0.7301



48.5662, 7.1151, -10.5158

Complementary

The Complementary color scheme is a pair of colors which are on the opposite of each other on the color wheel.



48.5651, 3.4870, 14.3209



46.7115, -5.5850, -11.8021

Split Complementary

Split-complementary colors differ from the complementary color scheme. The scheme consists of three colors, the original color and two neighbors of the complement color.



48.5662, -0.6063, -14.2619



48.5651, 3.4870, 14.3209



48.5662, -14.2492, -7.1194

Square

The Square scheme is like the rectangle color scheme, but the four colors are evenly spaced on the color wheel.



48.5662, 3.4852, 14.3216



48.5662, -16.0155, 7.9577



48.5662, -8.3881, -12.9276



48.5662, 12.4646, -3.3484

Rectangle

The Rectangle color scheme consists of four colors that form a rectangle on the color wheel.



48.5651, 3.4870, 14.3209



48.5662, -9.4743, 13.9467



48.5662, -8.3881, -12.9276



48.5662, 4.6920, -12.2658

Sweetspot

The Sweet Spot groups the original color and five complimentary colors.



48.5662, 3.4852, 14.3216



73.7845, -1.8924, 9.1697



43.0744, 19.7989, -3.5060



34.3810, -0.7434, 4.5838



88.7363, -4.7347, 4.8212



36.4511, -1.9449, 1.9805

Same Dimension

The Same Dimension uses a secret algorithm to generate beautiful new colors.



48.5662, 3.4852, 14.3216



62.4729, 7.0396, 21.6458



55.9980, -8.8770, 20.7636



26.6964, -0.7605, 3.1433



31.1966, 21.2099, 19.5945



5.0782, 0.9136, 3.1452

Inverse Universe

The Inverse Universe completely reimagines the original color for something new.



46.7115, -5.5850, -11.8021



59.4871, -7.4840, -20.4128



39.4519, 6.9831, -23.5057



26.4490, -1.9806, -0.3402



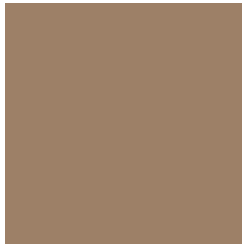
26.9075, 3.1584, -40.4503



4.6228, -1.2340, -3.1143

Previews

White Background



This preview shows how the HunterLab color 48.5651, 3.4870, 14.3209 looks on a white background.

Color Contrast Check

Large Text (above 18pt) WCAG AA ✓ Pass

Any Text WCAG AA × Fail

Large Text (above 18pt) WCAG AAA × Fail

Any Text WCAG AAA × Fail

Black Background



This preview shows how the HunterLab color 48.5651, 3.4870, 14.3209 looks on a black background.

Color Contrast Check

Large Text (above 18pt) WCAG AA ✓ Pass

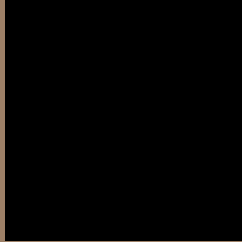
Any Text WCAG AA ✓ Pass

Large Text (above 18pt) WCAG AAA ✓ Pass

Any Text WCAG AAA × Fail

If you want to check with other color combinations, try the [Color Contrast Checker](#).

HunterLab 48.5651, 3.4870, 14.3209 Background



This preview shows how black text looks on a background with the HunterLab color 48.5651, 3.4870, 14.3209.



This preview shows how white text looks on a background with the HunterLab color 48.5651, 3.4870,

Color Blindness Simulation

Color vision deficiency is a very complex topic, and I could not describe the different causes any better than Wikipedia does, so if you want to learn more, you should check out their [article about color blindness](#).

Dichromacy



Original Color

48.5651, 3.4870, 14.3209

Protanopia

48.5240, -3.6470, 13.5066

Deuteranopia

48.5651, 3.4870, 14.3209



Tritanopia

48.5617, 10.3603, 3.0122

Trichromacy



Original Color

48.5651, 3.4870, 14.3209

Protanomaly

48.4098, -1.2094, 13.7685

Deuteranomaly

48.5651, 3.4870, 14.3209

Tritanomaly

48.4183, 7.9665, 7.4280

Monochromacy



Original Color

48.5651, 3.4870, 14.3209

Achromatopsia

48.8260, -2.6052, 2.6528

Achromatomaly

48.6656, -0.8702, 7.1424

CSS Examples

Text

The CSS property to change the color of the text to HunterLab 48.5651, 3.4870, 14.3209 is called "color". The color property can be set on classes, ids or directly on the HTML element.

This example shows how text in the color `rgb(157, 128, 103)` looks like.

```
.text, #text, p{  
    color:rgb(157, 128, 103)  
}
```

If you want to add a text shadow in that color use the text-shadow property, you can generate a text shadow directly with our [CSS Text Shadow Generator](#).

Here you see how black text with a 4 pixel rgb(157, 128, 103) colored shadow looks like.

```
.shadow{ text-shadow: 4px 4px 2px rgb(157, 128, 103) }
```

Border

The CSS property to change the border of an element to HunterLab 48.5651, 3.4870, 14.3209 is called "border". The border property can be set on classes, ids or directly on the HTML element.

This example shows the color as border, it can be applied via the CSS property "border" or "border-color".

```
.border, #border, table{ border:4px solid rgb(157, 128, 103) }
```


If only the border color should be changed use the property `border-color`.

```
.border{ border-color:rgb(157, 128, 103) }
```

If you want to add a box shadow in that color use:

Here you see how a box with a 4 pixel `rgb(157, 128, 103)` colored shadow looks like.

```
.boxshadow{ -moz-box-shadow:4px 4px 4px  
4px rgb(157, 128, 103); -webkit-box-  
shadow:4px 4px 4px 4px rgb(157, 128, 103);  
box-shadow:4px 4px 4px 4px rgb(157, 128,  
103) }
```

Background

The CSS property to change the background color of an element to HunterLab 48.5651, 3.4870, 14.3209 is called "background". The background property can be set on classes, ids or directly on the HTML element.

```
.background, #background, body{  
background: rgb(157, 128, 103) }
```

If only the background color should be changed can be used:

```
.background{ background-color: rgb(157,  
128, 103) }
```

This example shows the color as background, it is applied via the CSS property "background".

To optimize and compress your CSS code, you can use our [online CSS compressor and optimizer](#) based on csstidy. If you want to create a linear or radial gradient as background or border, check our [CSS Gradient Generator](#).

Hey! You found this booklet interesting? Support Converting Colors with the new Membership Option!

The pro membership hides all ads, plus gives you double the colors in the color bucket, and more awesome pro features!

[Learn more, Memberships starting at \\$2.50/m!](#)

**Follow me
on Twitter!**

@ConvertingColor