

Converting Colors

HunterLab(48.7066, 67.3231,
14.3809)

Have a look what the booklet for
HunterLab(48.7066, 67.3231,
14.3809) contains.

HunterLab(48.7236, 67.4466, 14.2775)	3
<i>Conversions</i>	4
<i>Details</i>	6
<i>Harmonies</i>	12
<i>Previews</i>	24
<i>Color Blindness Simulation</i>	28
<i>CSS Examples</i>	31

Color

**HunterLab(48.7236, 67.4466,
14.2775)**

Conversions

Conversions Part 1

Format	Color
Hex	F43E6B
RGB	244, 62, 107
RGB Percent	96%, 24%, 42%
CMY	0.0431, 0.7568, 0.5804
CMYK	0.00, 0.75, 0.56, 0.04
HSL	345°, 89%, 60%
HSV	345°, 75%, 96%
XYZ	41.6847, 23.7399, 16.2952
YIQ	121.5480, 94.0270, 52.5790

Conversions

Conversions Part 2

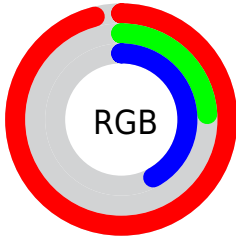
Format	Color
R_{YB}	244, 62, 107
Decimal	16006763
CIE Lab	55.83, 70.28, 17.66
CIE LCh	56, 72.465, 14.101
Yxy	23.7413, 0.5101, 0.2905
Android (android.graphics.Color)	4294196843 (0xFFFF43E6B)
YUV	121.5480, -7.1722, 107.3904
Hunter-Lab	48.7236, 67.4466, 14.2775

Details

The HunterLab color **48.7236, 67.4466, 14.2775** is a dark color, and the websafe version is hex **FF3366**. The color can be described as middle washed rose. A complement of this color would be **83.5762, -50.8997, 12.2713**, and the grayscale version is **43.9435, -2.3447, 2.3875**.

A 20% lighter version of the original color is **61.7608, 49.7782, 7.8745**, and **31.8591, 55.5836, 12.6487** is the 20% darker color. If you saturate the color by 10%, you get **46.1625, 73.0231, 17.6883**, and if you desaturate by 10%, it is **52.3879, 59.5847, 11.2260**.

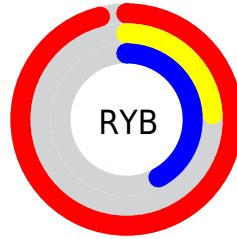
Distribution



Red (96%)

Green (24%)

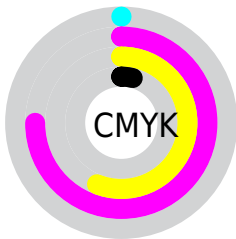
Blue (42%)



Red (96%)

Yellow (24%)

Blue (42%)

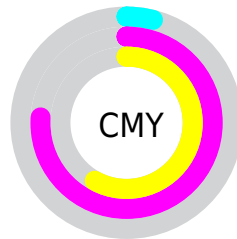


Cyan (0%)

Magenta (75%)

Yellow (56%)

Black (4%)



Cyan (4%)

Magenta (76%)

Yellow (58%)

Brightness & Saturation Gradients

These gradients show how the HunterLab color 48.7236, 67.4466, 14.2775 changes by changing the brightness by 10 percent. The first figure shows a shift by +10% for each color and the second figure -10%.

Similar to the brightness gradients but the following saturation gradients show a change of the HunterLab color 48.7236, 67.4466, 14.2775 by changing the saturation by 10% instead.

48.7236, 67.4466,
14.2775

48.7236, 67.4466,
14.2775

164.7756, 84.5016,
27.9116

38.9125, 65.1388,
12.6466

70.4327, 71.8644,
17.4119

29.8646, 62.8491,
10.9442

82.2456, 73.9444,
18.9382

21.6526, 60.7278,
9.1366

94.6537, 75.9298,
20.4483

14.3722, 59.1847,
7.2819

107.6298, 77.8209,
21.9479

8.0323, 60.9802,
5.6226

121.1501, 79.6201,
23.4411

0.0000, INF, NaN

0.0000, INF, NaN

135.1933, 81.3309,

24.9311

0.0000, NaN, NaN

149.7408, 82.9568,
26.4206

0.0000, NaN, NaN

■ 48.7236, 67.4466,
14.2775

■ 48.7236, 67.4466,
14.2775

■ 46.1625, 73.0231,
17.6883

■ 52.3879, 59.5847,
11.2260

■ 44.6899, 75.8429,
21.1200


■ 57.0673, 50.2273,
8.7400


■ 44.2297, 76.4898,
22.8035


■ 62.6362, 40.0941,
6.8952


■ 68.9604, 29.7039,
5.6704

■ 75.9181, 19.3651,
4.9964

 83.4069, 9.2312,
4.7903

 91.3437, -0.6399,
4.9731

 98.9471, -9.0862,
4.6532

 98.9813, -8.8977,
4.1658

Harmonies

Analogous

The Analogous color harmony consists of three colors that are next to each other on the color wheel.



48.7250, 66.7334, -15.0282



48.7236, 67.4466, 14.2775



48.7250, 46.4801, 27.5556

Triad

The Triadic color harmony groups three colors that are evenly spaced from another and form a triangle on the color wheel.



48.7250, 67.4418, 14.2786



48.7250, -36.7759, 27.9766



48.7250, -17.5058, -85.9460

Complementary

The Complementary color scheme is a pair of colors which are on the opposite of each other on the color wheel.



48.7236, 67.4466, 14.2775



83.5762, -50.8997, 12.2713

Split Complementary

Split-complementary colors differ from the complementary color scheme. The scheme consists of three colors, the original color and two neighbors of the complement color.



48.7250, -37.6726, -53.5485



48.7236, 67.4466, 14.2775



48.7250, -46.8047, 15.4834

Square

The Square scheme is like the rectangle color scheme, but the four colors are evenly spaced on the color wheel.



48.7250, 67.4418, 14.2786



48.7250, -15.9536, 31.5630



48.7250, -47.0870, -12.8100



48.7250, 12.3616, -87.0442

Rectangle

The Rectangle color scheme consists of four colors that form a rectangle on the color wheel.



48.7236, 67.4466, 14.2775



48.7250, 25.4315, 30.7657



48.7250, -47.0870, -12.8100



48.7250, -25.4524, -77.7545

Sweetspot

The Sweet Spot groups the original color and five complimentary colors.



48.7250, 67.4418, 14.2786



81.7638, 17.6372, 5.1551



46.9602, 75.4661, -77.8017



36.8625, 9.5118, 2.4342

0.0000, NaN, NaN



46.2646, -2.4686, 2.5136

Same Dimension

The Same Dimension uses a secret algorithm to generate beautiful new colors.



48.7250, 67.4418, 14.2786



47.5285, 78.8070, 20.6504



54.9573, 45.0760, 29.7347



40.6813, 1.9390, 2.2526



32.6424, 56.5059, 16.4054



9.7582, 17.0502, 3.6780

Inverse Universe

The Inverse Universe completely reimagines the original color for something new.



48.7250, 67.4418, 14.2786



47.5285, 78.8070, 20.6504



69.4080, -22.1282, -30.7295



40.6813, 1.9390, 2.2526



32.6424, 56.5059, 16.4054



9.7582, 17.0502, 3.6780

Previews

White Background



This preview shows how the HunterLab color 48.7236, 67.4466, 14.2775 looks on a white background.

Color Contrast Check

Large Text (above 18pt) WCAG AA ✓ Pass

Any Text WCAG AA × Fail

Large Text (above 18pt) WCAG AAA × Fail

Any Text WCAG AAA × Fail

Black Background



This preview shows how the HunterLab color 48.7236, 67.4466, 14.2775 looks on a black background.

Color Contrast Check

Large Text (above 18pt) WCAG AA ✓ Pass

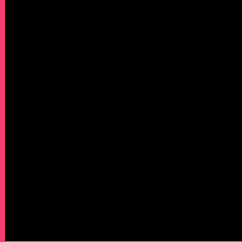
Any Text WCAG AA ✓ Pass

Large Text (above 18pt) WCAG AAA ✓ Pass

Any Text WCAG AAA × Fail

If you want to check with other color combinations, try the [Color Contrast Checker](#).

HunterLab 48.7236, 67.4466, 14.2775 Background



This preview shows how black text looks on a background with the HunterLab color 48.7236, 67.4466, 14.2775.



This preview shows how white text looks on a background with the HunterLab color 48.7236, 67.4466, 14.2775.

Color Blindness Simulation

Color vision deficiency is a very complex topic, and I could not describe the different causes any better than Wikipedia does, so if you want to learn more, you should check out their [article about color blindness](#).

Dichromacy



Original Color

48.7236, 67.4466, 14.2775

Protanopia

48.7815, -0.8352, -1.0597

Deuteranopia

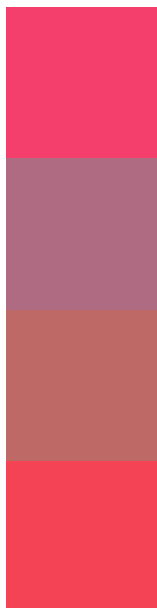
48.9421, 3.1706, 16.2150



Tritanopia

48.7223, 61.3201, 23.4254

Trichromacy



Original Color

48.7236, 67.4466, 14.2775

Protanomaly

45.9337, 23.2788, 1.9037

Deuteranomaly

46.8934, 26.9388, 13.8004

Tritanomaly

48.7082, 63.5797, 20.6654

Monochromacy



Original Color

48.7236, 67.4466, 14.2775

Achromatopsia

44.1155, -2.3539, 2.3969

Achromatomaly

43.0182, 22.2039, 3.7009

CSS Examples

Text

The CSS property to change the color of the text to HunterLab 48.7236, 67.4466, 14.2775 is called "color". The color property can be set on classes, ids or directly on the HTML element.

This example shows how text in the color `rgb(244, 62, 107)` looks like.

```
.text, #text, p{  
    color:rgb(244, 62, 107)  
}
```

If you want to add a text shadow in that color use the text-shadow property, you can generate a text shadow directly with our [CSS Text Shadow Generator](#).

Here you see how black text with a 4 pixel rgb(244, 62, 107) colored shadow looks like.

```
.shadow{ text-shadow: 4px 4px 2px rgb(244, 62, 107) }
```

Border

The CSS property to change the border of an element to HunterLab 48.7236, 67.4466, 14.2775 is called "border". The border property can be set on classes, ids or directly on the HTML element.

This example shows the color as border, it can be applied via the CSS property "border" or "border-color".

```
.border, #border, table{ border:4px solid rgb(244, 62, 107) }
```


If only the border color should be changed use the property `border-color`.

```
.border{ border-color:rgb(244, 62, 107) }
```

If you want to add a box shadow in that color use:

Here you see how a box with a 4 pixel `rgb(244, 62, 107)` colored shadow looks like.

```
.boxshadow{ -moz-box-shadow:4px 4px 4px  
4px rgb(244, 62, 107); -webkit-box-  
shadow:4px 4px 4px 4px rgb(244, 62, 107);  
box-shadow:4px 4px 4px 4px rgb(244, 62,  
107) }
```

Background

The CSS property to change the background color of an element to HunterLab 48.7236, 67.4466, 14.2775 is called "background". The background property can be set on classes, ids or directly on the HTML element.

```
.background, #background, body{  
background: rgb(244, 62, 107) }
```

If only the background color should be changed can be used:

```
.background{ background-color: rgb(244, 62,  
107) }
```

This example shows the color as background, it is applied via the CSS property "background".

To optimize and compress your CSS code, you can use our [online CSS compressor and optimizer](#) based on csstidy. If you want to create a linear or radial gradient as background or border, check our [CSS Gradient Generator](#).

Hey! You found this booklet interesting? Support Converting Colors with the new Membership Option!

The pro membership hides all ads, plus gives you double the colors in the color bucket, and more awesome pro features!

[Learn more, Memberships starting at \\$2.50/m!](#)

**Follow me
on Twitter!**

@ConvertingColor