

Converting Colors

HunterLab(48.7174, 39.8682,
-4.3987)

Have a look what the booklet for
HunterLab(48.7174, 39.8682,
-4.3987) contains.

HunterLab(48.7174, 39.8682, -4.3987)	3
<i>Conversions</i>	4
<i>Details</i>	6
<i>Harmonies</i>	12
<i>Previews</i>	24
<i>Color Blindness Simulation</i>	28
<i>CSS Examples</i>	31

Color

**HunterLab(48.7174, 39.8682,
-4.3987)**

Conversions

Conversions Part 1

Format	Color
Hex	C96496
RGB	201, 100, 150
RGB Percent	79%, 39%, 59%
CMY	0.2118, 0.6078, 0.4118
CMYK	0.00, 0.50, 0.25, 0.21
HSL	330°, 48%, 59%
HSV	330°, 50%, 79%
XYZ	34.1496, 23.7339, 31.6354
YIQ	135.8990, 44.1460, 36.9620

Conversions

Conversions Part 2

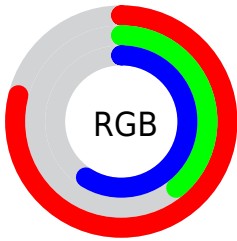
Format	Color
R _{YB}	201, 100, 150
Decimal	13198486
CIE _{Lab}	55.82, 45.88, -8.64
CIE _{LCh}	56, 46.688, 349.341
Y _{xy}	23.7350, 0.3815, 0.2651
Android (android.graphics.Color)	4291388566 (0xFFC96496)
Y _{UV}	135.8990, 6.9518, 57.0936
Hunter-Lab	48.7174, 39.8682, -4.3987

Details

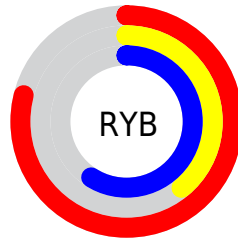
The HunterLab color $48.7174, 39.8682, -4.3987$ is a light color, and the websafe version is hex `CC6699`. A complement of this color would be $68.3503, -36.7506, 16.0746$, and the grayscale version is $49.5407, -2.6434, 2.6916$.

A 20% lighter version of the original color is $69.8075, 40.7063, -4.7921$, and $29.7711, 36.4593, -4.5257$ is the 20% darker color. If you saturate the color by 10%, you get $44.7550, 47.9981, -4.3742$, and if you desaturate by 10%, it is $53.3097, 31.1832, -3.6703$.

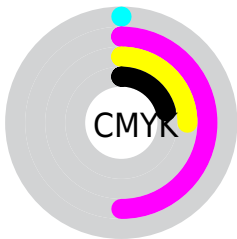
Distribution



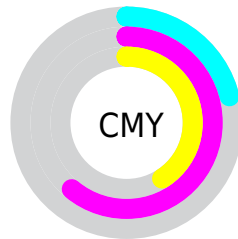
- Red (79%)
- Green (39%)
- Blue (59%)



- Red (79%)
- Yellow (39%)
- Blue (59%)



- Cyan (0%)
- Magenta (50%)
- Yellow (25%)
- Black (21%)



- Cyan (21%)
- Magenta (61%)
- Yellow (41%)

Brightness & Saturation Gradients

These gradients show how the HunterLab color 48.7174, 39.8682, -4.3987 changes by changing the brightness by 10 percent. The first figure shows a shift by +10% for each color and the second figure -10%.

Similar to the brightness gradients but the following saturation gradients show a change of the HunterLab color 48.7174, 39.8682, -4.3987 by changing the saturation by 10% instead.

48.7174, 39.8682,
-4.3987

48.7174, 39.8682,
-4.3987

164.7659, 50.0735,
-1.2168

38.9065, 38.2272,
-4.4947

70.4255, 42.7968,
-4.0195

29.8592, 36.4747,
-4.5214

82.2380, 44.1008,
-3.7497

21.6477, 34.6321,
-4.4679

94.6457, 45.3064,
-3.4315

14.3679, 32.7913,
-4.3232

107.6215, 46.4202,
-3.0684

8.0279, 32.2849,
-4.3306

121.1414, 47.4485,
-2.6631

0.0000, INF, -NF

0.0000, NaN, NaN

135.1843, 48.3969,

-2.2180

0.0000, NaN, NaN

149.7314, 49.2704,
-1.7353

0.0000, NaN, NaN

■ 48.7174, 39.8682,
-4.3987

■ 48.7174, 39.8682,
-4.3987

■ 44.7550, 47.9981,
-4.3742

■ 53.3097, 31.1832,
-3.6703

■ 41.5122, 55.0721,
-3.4695

■ 58.4359, 22.3043,
-2.3391

■ 39.0647, 60.4890,
-1.6222

■ 64.0148, 13.4404,
-0.5353

■ 37.4391, 63.7480,
1.0941

■ 69.9773, 4.7007,
1.6346

■ 36.5075, 65.0141,
4.2587

■ 76.2667, -3.8693,
4.0889

■ 82.8376, -12.2606,
6.7668

■ 89.6534, -20.4827,
9.6231

■ 94.7198, -25.7416,
10.4995

■ 95.0313, -23.9704,
6.0463

Harmonies

Analogous

The Analogous color harmony consists of three colors that are next to each other on the color wheel.



48.7186, 29.1367, -26.6871



48.7174, 39.8682, -4.3987



48.7186, 37.9436, 13.0239

Triad

The Triadic color harmony groups three colors that are evenly spaced from another and form a triangle on the color wheel.



48.7186, 39.8656, -4.3975



48.7186, -14.3794, 25.6932



48.7186, -24.6522, -32.7898

Complementary

The Complementary color scheme is a pair of colors which are on the opposite of each other on the color wheel.



48.7174, 39.8682, -4.3987



68.3503, -36.7506, 16.0746

Split Complementary

Split-complementary colors differ from the complementary color scheme. The scheme consists of three colors, the original color and two neighbors of the complement color.



48.7186, -33.1052, -10.6627



48.7174, 39.8682, -4.3987



48.7186, -27.8495, 20.6028

Square

The Square scheme is like the rectangle color scheme, but the four colors are evenly spaced on the color wheel.



48.7186, 39.8656, -4.3975



48.7186, 4.5095, 26.2586



48.7186, -34.1758, 8.7835



48.7186, -9.3278, -46.8628

Rectangle

The Rectangle color scheme consists of four colors that form a rectangle on the color wheel.



48.7174, 39.8682, -4.3987



48.7186, 29.8245, 20.2431



48.7186, -34.1758, 8.7835



48.7186, -28.2820, -25.7199

Sweetspot

The Sweet Spot groups the original color and five complimentary colors.



48.7186, 39.8656, -4.3975



87.6326, 11.8020, 0.6769



44.5694, 33.2252, -45.4643



39.7758, 6.5934, 0.0363

0.0000, NaN, NaN



46.2646, -2.4686, 2.5136

Same Dimension

The Same Dimension uses a secret algorithm to generate beautiful new colors.



48.7186, 39.8656, -4.3975



58.2809, 63.4004, -5.6868



47.3848, 33.6500, 14.6998



32.7460, 1.8333, 0.8535



28.9803, 51.6686, 2.9208



6.4211, 11.6598, -0.9946

Inverse Universe

The Inverse Universe completely reimagines the original color for something new.



48.7186, 39.8656, -4.3975



58.2809, 63.4004, -5.6868



69.7855, -28.2889, -4.4416



32.7460, 1.8333, 0.8535



28.9803, 51.6686, 2.9208



6.4211, 11.6598, -0.9946

Previews

White Background



This preview shows how the HunterLab color 48.7174, 39.8682, -4.3987 looks on a white background.

Color Contrast Check

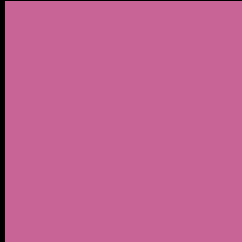
Large Text (above 18pt) WCAG AA ✓ Pass

Any Text WCAG AA × Fail

Large Text (above 18pt) WCAG AAA × Fail

Any Text WCAG AAA × Fail

Black Background



This preview shows how the HunterLab color 48.7174, 39.8682, -4.3987 looks on a black background.

Color Contrast Check

Large Text (above 18pt) WCAG AA ✓ Pass

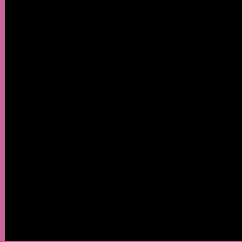
Any Text WCAG AA ✓ Pass

Large Text (above 18pt) WCAG AAA ✓ Pass

Any Text WCAG AAA × Fail

If you want to check with other color combinations, try the [Color Contrast Checker](#).

HunterLab 48.7174, 39.8682, -4.3987 Background



This preview shows how black text looks on a background with the HunterLab color 48.7174, 39.8682, -4.3987.



This preview shows how white text looks on a background with the HunterLab color 48.7174, 39.8682, -4.3987.

-4.3987.

Color Blindness Simulation

Color vision deficiency is a very complex topic, and I could not describe the different causes any better than Wikipedia does, so if you want to learn more, you should check out their [article about color blindness](#).

Dichromacy



Original Color

48.7174, 39.8682, -4.3987

Protanopia

49.0293, 2.1070, -16.9493

Deuteranopia

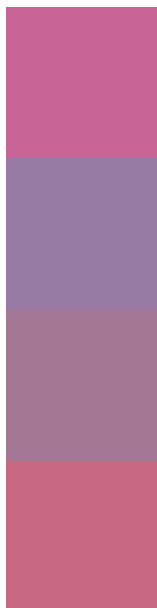
48.7446, 3.4946, -2.4860



Tritanopia

48.7432, 30.5701, 10.8413

Trichromacy



Original Color

48.7174, 39.8682, -4.3987

Protanomaly

47.9901, 14.5366, -13.5661

Deuteranomaly

48.0487, 16.0987, -4.1726

Tritanomaly

48.5811, 34.0285, 5.6074

Monochromacy



Original Color

48.7174, 39.8682, -4.3987

Achromatopsia

49.6187, -2.6475, 2.6959

Achromatomaly

48.5413, 12.0883, -0.6567

CSS Examples

Text

The CSS property to change the color of the text to HunterLab 48.7174, 39.8682, -4.3987 is called "color". The color property can be set on classes, ids or directly on the HTML element.

This example shows how text in the color `rgb(201, 100, 150)` looks like.

```
.text, #text, p{  
    color:rgb(201, 100, 150)  
}
```

If you want to add a text shadow in that color use the text-shadow property, you can generate a text shadow directly with our [CSS Text Shadow Generator](#).

Here you see how black text with a 4 pixel rgb(201, 100, 150) colored shadow looks like.

```
.shadow{ text-shadow: 4px 4px 2px rgb(201, 100, 150) }
```

Border

The CSS property to change the border of an element to HunterLab 48.7174, 39.8682, -4.3987 is called "border". The border property can be set on classes, ids or directly on the HTML element.

This example shows the color as border, it can be applied via the CSS property "border" or "border-color".

```
.border, #border, table{ border:4px solid rgb(201, 100, 150) }
```


If only the border color should be changed use the property `border-color`.

```
.border{ border-color:rgb(201, 100, 150) }
```

If you want to add a box shadow in that color use:

Here you see how a box with a 4 pixel `rgb(201, 100, 150)` colored shadow looks like.

```
.boxshadow{ -moz-box-shadow:4px 4px 4px  
4px rgb(201, 100, 150); -webkit-box-  
shadow:4px 4px 4px 4px rgb(201, 100, 150);  
box-shadow:4px 4px 4px 4px rgb(201, 100,  
150) }
```

Background

The CSS property to change the background color of an element to HunterLab 48.7174, 39.8682, -4.3987 is called "background". The background property can be set on classes, ids or directly on the HTML element.

```
.background, #background, body{  
background: rgb(201, 100, 150) }
```

If only the background color should be changed can be used:

```
.background{ background-color: rgb(201,  
100, 150) }
```

This example shows the color as background, it is applied via the CSS property "background".

To optimize and compress your CSS code, you can use our [online CSS compressor and optimizer](#) based on csstidy. If you want to create a linear or radial gradient as background or border, check our [CSS Gradient Generator](#).

Hey! You found this booklet interesting? Support Converting Colors with the new Membership Option!

The pro membership hides all ads, plus gives you double the colors in the color bucket, and more awesome pro features!

[Learn more, Memberships starting at \\$2.50/m!](#)

**Follow me
on Twitter!**

@ConvertingColor