

Converting Colors

HunterLab(48.7203, 56.0563,
3.5025)

Have a look what the booklet for
HunterLab(48.7203, 56.0563,
3.5025) contains.

HunterLab(48.7595, 56.0139, 3.6007)	3
<i>Conversions</i>	4
<i>Details</i>	6
<i>Harmonies</i>	12
<i>Previews</i>	24
<i>Color Blindness Simulation</i>	28
<i>CSS Examples</i>	31

Color

**HunterLab(48.7595, 56.0139,
3.6007)**

Conversions

Conversions Part 1

Format	Color
Hex	E25186
RGB	226, 81, 134
RGB Percent	89%, 32%, 53%
CMY	0.1137, 0.6823, 0.4745
CMYK	0.00, 0.64, 0.41, 0.11
HSL	338°, 71%, 60%
HSV	338°, 64%, 89%
XYZ	38.6096, 23.7749, 25.1083
YIQ	130.3970, 69.4070, 47.2230

Conversions

Conversions Part 2

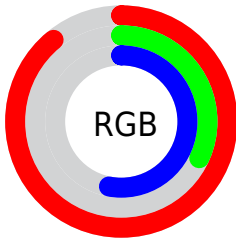
Format	Color
R _Y B	226, 81, 134
Decimal	14832006
CIE Lab	55.86, 60.55, 1.26
CIE LCh	56, 60.563, 1.189
Yxy	23.7762, 0.4413, 0.2717
Android (android.graphics.Color)	4293022086 (0xFFE25186)
YUV	130.3970, 1.7763, 83.8438
Hunter-Lab	48.7595, 56.0139, 3.6007

Details

The HunterLab color **48.7595, 56.0139, 3.6007** is a light color, and the websafe version is hex **FF6699**. The color can be described as light muted rose. A complement of this color would be **76.9155, -46.1032, 16.1091**, and the grayscale version is **47.3790, -2.5280, 2.5742**.

A 20% lighter version of the original color is **65.5933, 46.5805, -1.2621**, and **29.8940, 51.8954, 2.2836** is the 20% darker color. If you saturate the color by 10%, you get **45.3697, 63.2915, 5.9843**, and if you desaturate by 10%, it is **53.0469, 47.3092, 2.0429**.

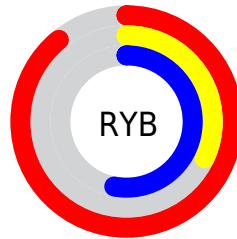
Distribution



Red (89%)

Green (32%)

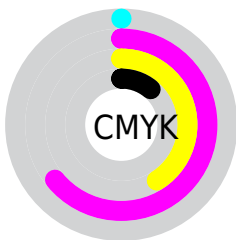
Blue (53%)



Red (89%)

Yellow (32%)

Blue (53%)

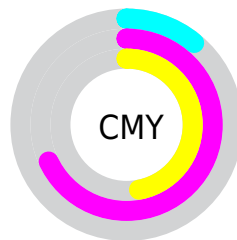


Cyan (0%)

Magenta (64%)

Yellow (41%)

Black (11%)



Cyan (11%)

Magenta (68%)

Yellow (47%)

Brightness & Saturation Gradients

These gradients show how the HunterLab color 48.7595, 56.0139, 3.6007 changes by changing the brightness by 10 percent. The first figure shows a shift by +10% for each color and the second figure -10%.

Similar to the brightness gradients but the following saturation gradients show a change of the HunterLab color 48.7595, 56.0139, 3.6007 by changing the saturation by 10% instead.

■ 48.7595, 56.0139,
3.6007

■ 48.7595, 56.0139,
3.6007

164.8293, 70.5065,
10.4025

■ 38.9457, 53.9261,
2.9978

■ 70.4732, 59.9015,
4.9100

■ 29.8951, 51.7874,
2.4293

■ 82.2882, 61.6950,
5.6109

■ 21.6800, 49.6842,
1.8982

■ 94.6984, 63.3886,
6.3415

■ 14.3960, 47.8695,
1.4067

■ 107.6765, 64.9860,
7.1005

■ 8.0565, 48.3782,
1.0849

121.1985, 66.4920,
7.8869

0.0000, INF, NaN

0.0000, NaN, NaN

135.2436, 67.9110,

8.7000

0.0000, NaN, NaN

149.7928, 69.2478,
9.5388

0.0000, NaN, NaN

■ 48.7595, 56.0139,
3.6007

■ 48.7595, 56.0139,
3.6007

■ 45.3697, 63.2915,
5.9843

■ 53.0469, 47.3092,
2.0429

■ 42.9482, 68.4590,
9.0937

■ 58.1178, 37.8371,
1.2779

■ 41.4933, 71.0620,
12.6758

■ 63.8579, 28.0656,
1.2106

■ 40.9721, 71.6751,
14.7763

■ 70.1618, 18.2834,
1.7247

■ 76.9402, 8.6416,
2.7109

■ 84.1205, -0.7960,
4.0769

■ 91.6442, -10.0151,
5.7489

■ 97.2167, -15.5670,
5.1124

■ 97.4211, -14.4267,
2.2001

Harmonies

Analogous

The Analogous color harmony consists of three colors that are next to each other on the color wheel.



48.7608, 47.6125, -25.2431



48.7595, 56.0139, 3.6007



48.7608, 46.2364, 21.0179

Triad

The Triadic color harmony groups three colors that are evenly spaced from another and form a triangle on the color wheel.



48.7608, 56.0102, 3.6019



48.7608, -25.2743, 27.9317



48.7608, -23.8552, -57.5863

Complementary

The Complementary color scheme is a pair of colors which are on the opposite of each other on the color wheel.



48.7595, 56.0139, 3.6007



76.9155, -46.1032, 16.1091

Split Complementary

Split-complementary colors differ from the complementary color scheme. The scheme consists of three colors, the original color and two neighbors of the complement color.



48.7608, -37.5590, -27.8109



48.7595, 56.0139, 3.6007



48.7608, -38.2536, 20.0710

Square

The Square scheme is like the rectangle color scheme, but the four colors are evenly spaced on the color wheel.



48.7608, 56.0102, 3.6019



48.7608, -3.6068, 29.9247



48.7608, -42.2525, 1.6870



48.7608, -1.5938, -69.7218

Rectangle

The Rectangle color scheme consists of four colors that form a rectangle on the color wheel.



48.7595, 56.0139, 3.6007



48.7608, 31.6876, 26.6621



48.7608, -42.2525, 1.6870



48.7608, -29.4425, -48.7523

Sweetspot

The Sweet Spot groups the original color and five complimentary colors.



48.7608, 56.0102, 3.6019



84.2993, 15.3794, 2.4858



44.9920, 55.6312, -66.1194



37.9743, 8.5924, 1.0081

0.0000, NaN, NaN



46.2646, -2.4686, 2.5136

Same Dimension

The Same Dimension uses a secret algorithm to generate beautiful new colors.



48.7608, 56.0102, 3.6019



50.9656, 74.8718, 7.9776



50.9341, 42.0731, 23.0583



37.1254, 1.9260, 1.5319



30.9806, 54.2612, 10.6694



8.2589, 14.6609, 1.3270

Inverse Universe

The Inverse Universe completely reimagines the original color for something new.



48.7608, 56.0102, 3.6019



50.9656, 74.8718, 7.9776



71.9066, -28.1447, -15.5113



37.1254, 1.9260, 1.5319



30.9806, 54.2612, 10.6694



8.2589, 14.6609, 1.3270

Previews

White Background



This preview shows how the HunterLab color 48.7595, 56.0139, 3.6007 looks on a white background.

Color Contrast Check

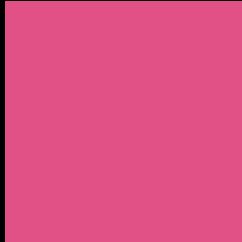
Large Text (above 18pt) WCAG AA ✓ Pass

Any Text WCAG AA × Fail

Large Text (above 18pt) WCAG AAA × Fail

Any Text WCAG AAA × Fail

Black Background



This preview shows how the HunterLab color 48.7595, 56.0139, 3.6007 looks on a black background.

Color Contrast Check

Large Text (above 18pt) WCAG AA ✓ Pass

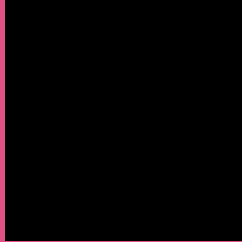
Any Text WCAG AA ✓ Pass

Large Text (above 18pt) WCAG AAA ✓ Pass

Any Text WCAG AAA × Fail

If you want to check with other color combinations, try the [Color Contrast Checker](#).

HunterLab 48.7595, 56.0139, 3.6007 Background



This preview shows how black text looks on a background with the HunterLab color 48.7595, 56.0139, 3.6007.



This preview shows how white text looks on a background with the HunterLab color 48.7595, 56.0139,

3.6007.

Color Blindness Simulation

Color vision deficiency is a very complex topic, and I could not describe the different causes any better than Wikipedia does, so if you want to learn more, you should check out their [article about color blindness](#).

Dichromacy



Original Color

48.7595, 56.0139, 3.6007

Protanopia

49.0309, 1.6527, -13.3834

Deuteranopia

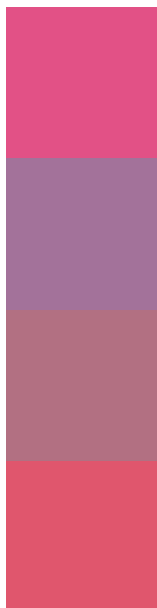
48.9710, 3.2065, 5.9223



Tritanopia

48.6405, 47.2459, 17.6023

Trichromacy



Original Color

48.7595, 56.0139, 3.6007

Protanomaly

47.0683, 19.8509, -9.1593

Deuteranomaly

47.6078, 22.3573, 3.4257

Tritanomaly

48.5870, 50.2742, 13.1642

Monochromacy



Original Color

48.7595, 56.0139, 3.6007

Achromatopsia

47.2470, -2.5210, 2.5670

Achromatomaly

46.0721, 17.8135, 1.0681

CSS Examples

Text

The CSS property to change the color of the text to HunterLab 48.7595, 56.0139, 3.6007 is called "color". The color property can be set on classes, ids or directly on the HTML element.

This example shows how text in the color `rgb(226, 81, 134)` looks like.

```
.text, #text, p{  
    color:rgb(226, 81, 134)  
}
```

If you want to add a text shadow in that color use the text-shadow property, you can generate a text shadow directly with our [CSS Text Shadow Generator](#).

Here you see how black text with a 4 pixel rgb(226, 81, 134) colored shadow looks like.

```
.shadow{ text-shadow: 4px 4px 2px rgb(226, 81, 134) }
```

Border

The CSS property to change the border of an element to HunterLab 48.7595, 56.0139, 3.6007 is called "border". The border property can be set on classes, ids or directly on the HTML element.

This example shows the color as border, it can be applied via the CSS property "border" or "border-color".

```
.border, #border, table{ border:4px solid rgb(226, 81, 134) }
```


If only the border color should be changed use the property border-color.

```
.border{ border-color:rgb(226, 81, 134) }
```

If you want to add a box shadow in that color use:

Here you see how a box with a 4 pixel rgb(226, 81, 134) colored shadow looks like.

```
.boxshadow{ -moz-box-shadow:4px 4px 4px  
4px rgb(226, 81, 134); -webkit-box-  
shadow:4px 4px 4px 4px rgb(226, 81, 134);  
box-shadow:4px 4px 4px 4px rgb(226, 81,  
134) }
```

Background

The CSS property to change the background color of an element to HunterLab 48.7595, 56.0139, 3.6007 is called "background". The background property can be set on classes, ids or directly on the HTML element.

```
.background, #background, body{  
background: rgb(226, 81, 134) }
```

If only the background color should be changed can be used:

```
.background{ background-color: rgb(226, 81,  
134) }
```

This example shows the color as background, it is applied via the CSS property "background".

To optimize and compress your CSS code, you can use our [online CSS compressor and optimizer](#) based on csstidy. If you want to create a linear or radial gradient as background or border, check our [CSS Gradient Generator](#).

Hey! You found this booklet interesting? Support Converting Colors with the new Membership Option!

The pro membership hides all ads, plus gives you double the colors in the color bucket, and more awesome pro features!

[Learn more, Memberships starting at \\$2.50/m!](#)

**Follow me
on Twitter!**

@ConvertingColor