

Converting Colors

HunterLab(48.7819, 54.0111,
13.4202)

Have a look what the booklet for
HunterLab(48.7819, 54.0111,
13.4202) contains.

HunterLab(48.7819, 54.0111, 13.4202)	3
<i>Conversions</i>	4
<i>Details</i>	6
<i>Harmonies</i>	12
<i>Previews</i>	24
<i>Color Blindness Simulation</i>	28
<i>CSS Examples</i>	31

Color

**HunterLab(48.7819, 54.0111,
13.4202)**

Conversions

Conversions Part 1

Format	Color
Hex	E5526D
RGB	229, 82, 109
RGB Percent	90%, 32%, 43%
CMY	0.1020, 0.6784, 0.5725
CMYK	0.00, 0.64, 0.52, 0.10
HSL	349°, 74%, 61%
HSV	349°, 64%, 90%
XYZ	38.0907, 23.7967, 17.0536
YIQ	129.0310, 78.9450, 39.5610

Conversions

Conversions Part 2

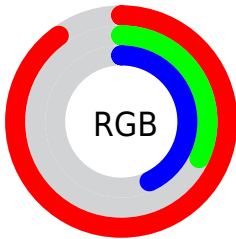
Format	Color
R_{YB}	229, 82, 109
Decimal	15028845
CIE Lab	55.89, 58.79, 16.13
CIE LCh	56, 60.961, 15.344
Yxy	23.7981, 0.4825, 0.3015
Android (android.graphics.Color)	4293218925 (0xFFE5526D)
YUV	129.0310, -9.8753, 87.6728
Hunter-Lab	48.7819, 54.0111, 13.4202

Details

The HunterLab color **48.7819, 54.0111, 13.4202** is a dark color, and the websafe version is hex **CC3366**. The color can be described as middle muted rose. A complement of this color would be **78.8019, -42.4005, 5.7696**, and the grayscale version is **46.8832, -2.5016, 2.5473**.

A 20% lighter version of the original color is **64.7881, 42.7643, 10.2355**, and **29.9341, 49.9535, 10.2929** is the 20% darker color. If you saturate the color by 10%, you get **45.3217, 61.4539, 16.2593**, and if you desaturate by 10%, it is **53.1913, 45.2808, 10.9223**.

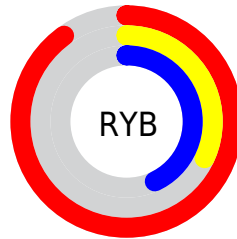
Distribution



Red (90%)

Green (32%)

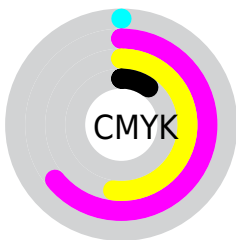
Blue (43%)



Red (90%)

Yellow (32%)

Blue (43%)

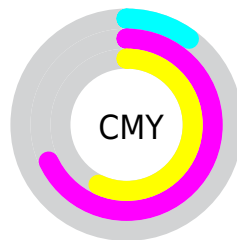


Cyan (0%)

Magenta (64%)

Yellow (52%)

Black (10%)



Cyan (10%)

Magenta (68%)

Yellow (57%)

Brightness & Saturation Gradients

These gradients show how the HunterLab color 48.7819, 54.0111, 13.4202 changes by changing the brightness by 10 percent. The first figure shows a shift by +10% for each color and the second figure -10%.

Similar to the brightness gradients but the following saturation gradients show a change of the HunterLab color 48.7819, 54.0111, 13.4202 by changing the saturation by 10% instead.

■ 48.7819, 54.0111,
13.4202

■ 48.7819, 54.0111,
13.4202

164.8630, 68.0131,
26.3815

■ 38.9665, 51.9695,
11.8926

■ 70.4986, 57.7925,
16.3725

■ 29.9141, 49.8676,
10.3048

■ 82.3149, 59.5306,
17.8171

■ 21.6971, 47.7812,
8.6269

■ 94.7264, 61.1684,
19.2504

■ 14.4110, 45.9391,
6.8499

■ 107.7057, 62.7101,
20.6772

■ 8.0716, 46.2420,
5.6501

121.2289, 64.1607,
22.1013

0.0000, INF, NaN

0.0000, NaN, NaN

135.2751, 65.5250,

23.5253

0.0000, NaN, NaN

149.8254, 66.8077,
24.9514

0.0000, NaN, NaN

■ 48.7819, 54.0111,
13.4202

■ 48.7819, 54.0111,
13.4202

■ 45.3217, 61.4539,
16.2593

■ 53.1913, 45.2808,
10.9223

■ 42.8897, 66.8921,
19.2160

■ 58.4243, 35.9335,
8.8710

■ 41.4850, 69.8294,
21.9861

■ 64.3563, 26.4239,
7.2861

■ 41.0189, 70.6545,
23.3395

■ 70.8736, 17.0168,
6.1351

■ 77.8811, 7.8376,
5.3637

■ 85.3019, -1.0720,
4.9145

■ 93.0750, -9.7149,
4.7351

■ 97.6719, -13.5319,
2.5181

Harmonies

Analogous

The Analogous color harmony consists of three colors that are next to each other on the color wheel.



48.7833, 54.2222, -10.6259



48.7819, 54.0111, 13.4202



48.7833, 36.6955, 25.4948

Triad

The Triadic color harmony groups three colors that are evenly spaced from another and form a triangle on the color wheel.



48.7833, 54.0070, 13.4212



48.7833, -32.7187, 25.3268



48.7833, -14.3602, -67.0900

Complementary

The Complementary color scheme is a pair of colors which are on the opposite of each other on the color wheel.



48.7819, 54.0111, 13.4202



78.8019, -42.4005, 5.7696

Split Complementary

Split-complementary colors differ from the complementary color scheme. The scheme consists of three colors, the original color and two neighbors of the complement color.



48.7833, -32.4110, -43.3156



48.7819, 54.0111, 13.4202



48.7833, -41.4417, 13.0104

Square

The Square scheme is like the rectangle color scheme, but the four colors are evenly spaced on the color wheel.



48.7833, 54.0070, 13.4212



48.7833, -14.8710, 29.5736



48.7833, -41.3420, -11.3115



48.7833, 11.0059, -66.7755

Rectangle

The Rectangle color scheme consists of four colors that form a rectangle on the color wheel.



48.7819, 54.0111, 13.4202



48.7833, 19.4915, 28.8230



48.7833, -41.3420, -11.3115



48.7833, -21.3575, -61.2705

Sweetspot

The Sweet Spot groups the original color and five complimentary colors.



48.7833, 54.0070, 13.4212



84.0221, 13.9241, 6.4391



48.9057, 63.6001, -58.6196



37.8275, 7.8279, 3.1020

0.0000, NaN, NaN



46.2646, -2.4686, 2.5136

Same Dimension

The Same Dimension uses a secret algorithm to generate beautiful new colors.



48.7833, 54.0070, 13.4212



50.1726, 71.7195, 19.4607



56.7593, 30.5877, 27.1699



37.9618, 1.6744, 2.3868



31.0367, 53.5012, 17.3438



8.5108, 14.8161, 3.6302

Inverse Universe

The Inverse Universe completely reimagines the original color for something new.



48.7833, 54.0070, 13.4212



50.1726, 71.7195, 19.4607



64.8911, -17.4151, -28.0494



37.9618, 1.6744, 2.3868



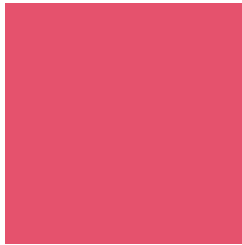
31.0367, 53.5012, 17.3438



8.5108, 14.8161, 3.6302

Previews

White Background



This preview shows how the HunterLab color 48.7819, 54.0111, 13.4202 looks on a white background.

Color Contrast Check

Large Text (above 18pt) WCAG AA ✓ Pass

Any Text WCAG AA × Fail

Large Text (above 18pt) WCAG AAA × Fail

Any Text WCAG AAA × Fail

Black Background



This preview shows how the HunterLab color 48.7819, 54.0111, 13.4202 looks on a black background.

Color Contrast Check

Large Text (above 18pt) WCAG AA ✓ Pass

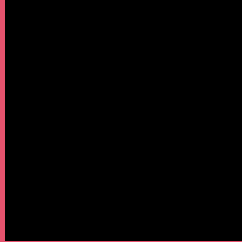
Any Text WCAG AA ✓ Pass

Large Text (above 18pt) WCAG AAA ✓ Pass

Any Text WCAG AAA × Fail

If you want to check with other color combinations, try the [Color Contrast Checker](#).

HunterLab 48.7819, 54.0111, 13.4202 Background



This preview shows how black text looks on a background with the HunterLab color 48.7819, 54.0111, 13.4202.



This preview shows how white text looks on a background with the HunterLab color 48.7819, 54.0111,

Color Blindness Simulation

Color vision deficiency is a very complex topic, and I could not describe the different causes any better than Wikipedia does, so if you want to learn more, you should check out their [article about color blindness](#).

Dichromacy



Original Color

48.7819, 54.0111, 13.4202

Protanopia

49.0242, -1.8600, 2.4544

Deuteranopia

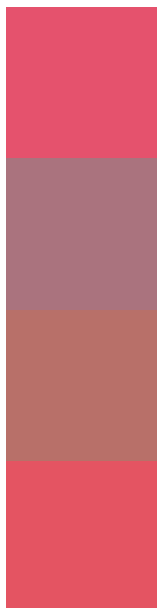
48.9172, 3.2453, 14.9635



Tritanopia

48.7302, 50.7367, 18.8732

Trichromacy



Original Color

48.7819, 54.0111, 13.4202

Protanomaly

47.2376, 17.3742, 4.6368

Deuteranomaly

47.7479, 21.5315, 13.2037

Tritanomaly

48.6996, 51.7486, 16.8462

Monochromacy



Original Color

48.7819, 54.0111, 13.4202

Achromatopsia

46.8536, -2.5000, 2.5456

Achromatomaly

45.8179, 16.5297, 4.6959

CSS Examples

Text

The CSS property to change the color of the text to HunterLab 48.7819, 54.0111, 13.4202 is called "color". The color property can be set on classes, ids or directly on the HTML element.

This example shows how text in the color `rgb(229, 82, 109)` looks like.

```
.text, #text, p{  
    color:rgb(229, 82, 109)  
}
```

If you want to add a text shadow in that color use the text-shadow property, you can generate a text shadow directly with our [CSS Text Shadow Generator](#).

Here you see how black text with a 4 pixel rgb(229, 82, 109) colored shadow looks like.

```
.shadow{ text-shadow: 4px 4px 2px rgb(229, 82, 109) }
```

Border

The CSS property to change the border of an element to HunterLab 48.7819, 54.0111, 13.4202 is called "border". The border property can be set on classes, ids or directly on the HTML element.

This example shows the color as border, it can be applied via the CSS property "border" or "border-color".

```
.border, #border, table{ border:4px solid rgb(229, 82, 109) }
```


If only the border color should be changed use the property `border-color`.

```
.border{ border-color:rgb(229, 82, 109) }
```

If you want to add a box shadow in that color use:

Here you see how a box with a 4 pixel `rgb(229, 82, 109)` colored shadow looks like.

```
.boxshadow{ -moz-box-shadow:4px 4px 4px  
4px rgb(229, 82, 109); -webkit-box-  
shadow:4px 4px 4px 4px rgb(229, 82, 109);  
box-shadow:4px 4px 4px 4px rgb(229, 82,  
109) }
```

Background

The CSS property to change the background color of an element to HunterLab 48.7819, 54.0111, 13.4202 is called "background". The background property can be set on classes, ids or directly on the HTML element.

```
.background, #background, body{  
background: rgb(229, 82, 109) }
```

If only the background color should be changed can be used:

```
.background{ background-color: rgb(229, 82,  
109) }
```

This example shows the color as background, it is applied via the CSS property "background".

To optimize and compress your CSS code, you can use our [online CSS compressor and optimizer](#) based on csstidy. If you want to create a linear or radial gradient as background or border, check our [CSS Gradient Generator](#).

Hey! You found this booklet interesting? Support Converting Colors with the new Membership Option!

The pro membership hides all ads, plus gives you double the colors in the color bucket, and more awesome pro features!

[Learn more, Memberships starting at \\$2.50/m!](#)

**Follow me
on Twitter!**

@ConvertingColor