

Converting Colors

HunterLab(48.7902, 48.1927,
0.9751)

Have a look what the booklet for
HunterLab(48.7902, 48.1927,
0.9751) contains.

HunterLab(48.8085, 48.0676, 0.7780)	3
<i>Conversions</i>	4
<i>Details</i>	6
<i>Harmonies</i>	12
<i>Previews</i>	24
<i>Color Blindness Simulation</i>	28
<i>CSS Examples</i>	31

Color

**HunterLab(48.8085, 48.0676,
0.7780)**

Conversions

Conversions Part 1

Format	Color
Hex	D75B8C
RGB	215, 91, 140
RGB Percent	84%, 36%, 55%
CMY	0.1569, 0.6431, 0.4510
CMYK	0.00, 0.58, 0.35, 0.16
HSL	336°, 61%, 60%
HSV	336°, 58%, 84%
XYZ	36.4990, 23.8227, 27.4855
YIQ	133.6620, 58.1750, 41.5270

Conversions

Conversions Part 2

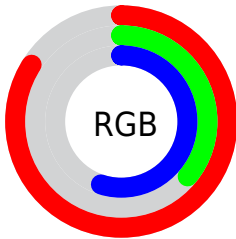
Format	Color
R_{YB}	215, 91, 140
Decimal	14113676
CIE _{Lab}	55.91, 53.47, -2.42
CIE _{LCh}	56, 53.523, 357.414
Yxy	23.8239, 0.4157, 0.2713
Android (android.graphics.Color)	4292303756 (0xFFD75B8C)
YUV	133.6620, 3.1246, 71.3334
Hunter-Lab	48.8085, 48.0676, 0.7780

Details

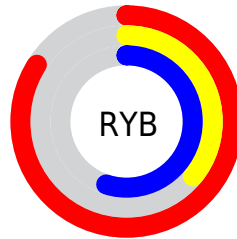
The HunterLab color **48.8085, 48.0676, 0.7780** is a dark color, and the websafe version is hex **CC6699**. The color can be described as middle muted rose. A complement of this color would be **73.1976, -41.5275, 15.1526**, and the grayscale version is **48.6654, -2.5967, 2.6441**.

A 20% lighter version of the original color is **67.5781, 43.2447, -1.8660**, and **29.8225, 44.1735, -0.0808** is the 20% darker color. If you saturate the color by 10%, you get **45.0535, 55.9195, 2.3192**, and if you desaturate by 10%, it is **53.3364, 39.2730, 0.0496**.

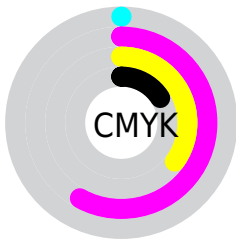
Distribution



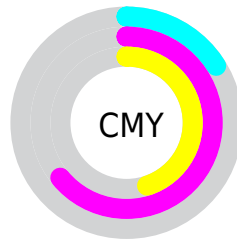
- Red (84%)
- Green (36%)
- Blue (55%)



- Red (84%)
- Yellow (36%)
- Blue (55%)



- Cyan (0%)
- Magenta (58%)
- Yellow (35%)
- Black (16%)



- Cyan (16%)
- Magenta (64%)
- Yellow (45%)

Brightness & Saturation Gradients

These gradients show how the HunterLab color 48.8085, 48.0676, 0.7780 changes by changing the brightness by 10 percent. The first figure shows a shift by +10% for each color and the second figure -10%.

Similar to the brightness gradients but the following saturation gradients show a change of the HunterLab color 48.8085, 48.0676, 0.7780 by changing the saturation by 10% instead.

48.8085, 48.0676,
0.7780

48.8085, 48.0676,
0.7780

164.9027, 60.5478,
6.1889

38.9911, 46.1794,
0.3748

70.5285, 51.5141,
1.7253

29.9366, 44.2049,
0.0223

82.3465, 53.0791,
2.2598

21.7173, 42.1942,
-0.2712

94.7595, 54.5436,
2.8319

14.4286, 40.3115,
-0.4960

107.7402, 55.9131,
3.4392

8.0895, 40.1386,
-0.7973

121.2648, 57.1931,
4.0801

0.0000, INF, NaN

0.0000, NaN, NaN

135.3124, 58.3891,

4.7529

0.0000, NaN, NaN

149.8640, 59.5058,
5.4562

0.0000, NaN, NaN

■ 48.8085, 48.0676,
0.7780

■ 48.8085, 48.0676,
0.7780

■ 45.0535, 55.9195,
2.3192

■ 53.3364, 39.2730,
0.0496

■ 42.1619, 62.1955,
4.6856

■ 58.5259, 30.0514,
0.0372

■ 40.1844, 66.2845,
7.7613

■ 64.2761, 20.7291,
0.6229

■ 39.0641, 67.9862,
11.2545

■ 70.4988, 11.4905,
1.6924

■ 38.8616, 68.2374,
12.0436

■ 77.1209, 2.4226,
3.1487

■ 84.0837, -6.4458,
4.9142

■ 91.3399, -15.1168,
6.9287

■ 96.1775, -19.6137,
6.1402

■ 96.5335, -17.6137,
1.0679

Harmonies

Analogous

The Analogous color harmony consists of three colors that are next to each other on the color wheel.



48.8098, 39.0516, -24.8266



48.8085, 48.0676, 0.7780



48.8098, 41.6090, 17.9582

Triad

The Triadic color harmony groups three colors that are evenly spaced from another and form a triangle on the color wheel.



48.8098, 48.0644, 0.7792



48.8098, -20.8289, 26.7732



48.8098, -23.6285, -45.7493

Complementary

The Complementary color scheme is a pair of colors which are on the opposite of each other on the color wheel.



48.8085, 48.0676, 0.7780



73.1976, -41.5275, 15.1526

Split Complementary

Split-complementary colors differ from the complementary color scheme. The scheme consists of three colors, the original color and two neighbors of the complement color.



48.8098, -35.1486, -20.1129



48.8085, 48.0676, 0.7780



48.8098, -33.7480, 19.9209

Square

The Square scheme is like the rectangle color scheme, but the four colors are evenly spaced on the color wheel.



48.8098, 48.0644, 0.7792



48.8098, -0.6560, 28.3696



48.8098, -38.4938, 4.4627



48.8098, -4.5278, -58.2163

Rectangle

The Rectangle color scheme consists of four colors that form a rectangle on the color wheel.



48.8085, 48.0676, 0.7780



48.8098, 29.9461, 24.1641



48.8098, -38.4938, 4.4627



48.8098, -28.3761, -37.9488

Sweetspot

The Sweet Spot groups the original color and five complimentary colors.



48.8098, 48.0644, 0.7792



85.9168, 13.3766, 2.1321



45.2021, 45.7159, -55.6733



39.0190, 7.2326, 0.8432

0.0000, NaN, NaN



46.2646, -2.4686, 2.5136

Same Dimension

The Same Dimension uses a secret algorithm to generate beautiful new colors.



48.8098, 48.0644, 0.7792



53.8660, 69.5357, 3.3086



49.9841, 36.8169, 19.7024



35.3571, 1.8593, 1.3363



30.0873, 52.8927, 8.8431



7.4971, 13.3842, 0.6181

Inverse Universe

The Inverse Universe completely reimagines the original color for something new.



48.8098, 48.0644, 0.7792



53.8660, 69.5357, 3.3086



70.4658, -27.4545, -11.1536



35.3571, 1.8593, 1.3363



30.0873, 52.8927, 8.8431



7.4971, 13.3842, 0.6181

Previews

White Background



This preview shows how the HunterLab color 48.8085, 48.0676, 0.7780 looks on a white background.

Color Contrast Check

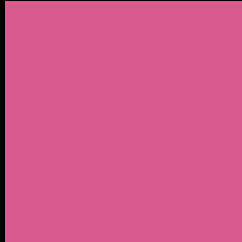
Large Text (above 18pt) WCAG AA ✓ Pass

Any Text WCAG AA × Fail

Large Text (above 18pt) WCAG AAA × Fail

Any Text WCAG AAA × Fail

Black Background



This preview shows how the HunterLab color 48.8085, 48.0676, 0.7780 looks on a black background.

Color Contrast Check

Large Text (above 18pt) WCAG AA ✓ Pass

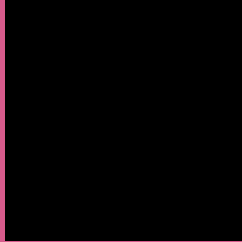
Any Text WCAG AA ✓ Pass

Large Text (above 18pt) WCAG AAA ✓ Pass

Any Text WCAG AAA × Fail

If you want to check with other color combinations, try the [Color Contrast Checker](#).

HunterLab 48.8085, 48.0676, 0.7780 Background



This preview shows how black text looks on a background with the HunterLab color 48.8085, 48.0676, 0.7780.



This preview shows how white text looks on a background with the HunterLab color 48.8085, 48.0676,

0.7780.

Color Blindness Simulation

Color vision deficiency is a very complex topic, and I could not describe the different causes any better than Wikipedia does, so if you want to learn more, you should check out their [article about color blindness](#).

Dichromacy



Original Color

48.8085, 48.0676, 0.7780

Protanopia

49.0684, 1.8552, -13.9068

Deuteranopia

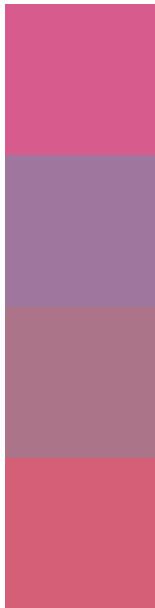
48.9718, 3.5950, 2.9328



Tritanopia

48.7364, 39.4907, 14.4638

Trichromacy



Original Color

48.8085, 48.0676, 0.7780

Protanomaly

47.7097, 17.0102, -9.9445

Deuteranomaly

47.9990, 19.0230, 1.1380

Tritanomaly

48.6195, 42.6897, 9.8053

Monochromacy



Original Color

48.8085, 48.0676, 0.7780

Achromatopsia

48.8260, -2.6052, 2.6528

Achromatomaly

47.4563, 14.8470, 0.4014

CSS Examples

Text

The CSS property to change the color of the text to HunterLab 48.8085, 48.0676, 0.7780 is called "color". The color property can be set on classes, ids or directly on the HTML element.

This example shows how text in the color `rgb(215, 91, 140)` looks like.

```
.text, #text, p{  
    color:rgb(215, 91, 140)  
}
```

If you want to add a text shadow in that color use the text-shadow property, you can generate a text shadow directly with our [CSS Text Shadow Generator](#).

Here you see how black text with a 4 pixel rgb(215, 91, 140) colored shadow looks like.

```
.shadow{ text-shadow: 4px 4px 2px rgb(215, 91, 140) }
```

Border

The CSS property to change the border of an element to HunterLab 48.8085, 48.0676, 0.7780 is called "border". The border property can be set on classes, ids or directly on the HTML element.

This example shows the color as border, it can be applied via the CSS property "border" or "border-color".

```
.border, #border, table{ border:4px solid rgb(215, 91, 140) }
```


If only the border color should be changed use the property `border-color`.

```
.border{ border-color:rgb(215, 91, 140) }
```

If you want to add a box shadow in that color use:

Here you see how a box with a 4 pixel `rgb(215, 91, 140)` colored shadow looks like.

```
.boxshadow{ -moz-box-shadow:4px 4px 4px  
4px rgb(215, 91, 140); -webkit-box-  
shadow:4px 4px 4px 4px rgb(215, 91, 140);  
box-shadow:4px 4px 4px 4px rgb(215, 91,  
140) }
```

Background

The CSS property to change the background color of an element to HunterLab 48.8085, 48.0676, 0.7780 is called "background". The background property can be set on classes, ids or directly on the HTML element.

```
.background, #background, body{  
background: rgb(215, 91, 140) }
```

If only the background color should be changed can be used:

```
.background{ background-color: rgb(215, 91,  
140) }
```

This example shows the color as background, it is applied via the CSS property "background".

To optimize and compress your CSS code, you can use our [online CSS compressor and optimizer](#) based on csstidy. If you want to create a linear or radial gradient as background or border, check our [CSS Gradient Generator](#).

Hey! You found this booklet interesting? Support Converting Colors with the new Membership Option!

The pro membership hides all ads, plus gives you double the colors in the color bucket, and more awesome pro features!

[Learn more, Memberships starting at \\$2.50/m!](#)

**Follow me
on Twitter!**

@ConvertingColor