

Converting Colors

HunterLab(48.9003, 22.6603,
10.7939)

Have a look what the booklet for
HunterLab(48.9003, 22.6603,
10.7939) contains.

HunterLab(48.8234, 22.7972, 10.7871)	3
<i>Conversions</i>	4
<i>Details</i>	6
<i>Harmonies</i>	12
<i>Previews</i>	24
<i>Color Blindness Simulation</i>	28
<i>CSS Examples</i>	31

Color

**HunterLab(48.8234, 22.7972,
10.7871)**

Conversions

Conversions Part 1

Format	Color
Hex	BB7273
RGB	187, 114, 115
RGB Percent	73%, 45%, 45%
CMY	0.2667, 0.5529, 0.5490
CMYK	0.00, 0.39, 0.39, 0.27
HSL	359°, 35%, 59%
HSV	359°, 39%, 73%
XYZ	29.6053, 23.8372, 19.2603
YIQ	135.9410, 43.1870, 15.7870

Conversions

Conversions Part 2

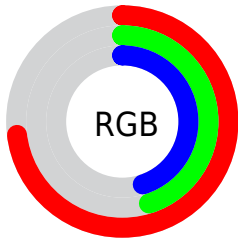
Format	Color
RYB	187, 114, 115
Decimal	12284531
CIELab	55.93, 28.91, 11.74
CIELCh	56, 31.203, 22.098
Yxy	23.8384, 0.4072, 0.3279
Android (android.graphics.Color)	4290474611 (0xFFBB7273)
YUV	135.9410, -10.3239, 44.7787
Hunter-Lab	48.8234, 22.7972, 10.7871

Details

The HunterLab color **48.8234, 22.7972, 10.7871** is a dark color, and the websafe version is hex **996666**. A complement of this color would be **65.3175, -22.5549, -2.3163**, and the grayscale version is **49.6239, -2.6478, 2.6962**.

A 20% lighter version of the original color is **70.5974, 24.2407, 13.2225**, and **29.8284, 20.8473, 8.1900** is the 20% darker color. If you saturate the color by 10%, you get **44.3386, 30.0997, 12.8701**, and if you desaturate by 10%, it is **53.8192, 15.6153, 8.8123**.

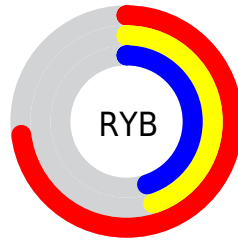
Distribution



Red (73%)

Green (45%)

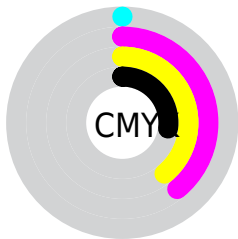
Blue (45%)



Red (73%)

Yellow (45%)

Blue (45%)

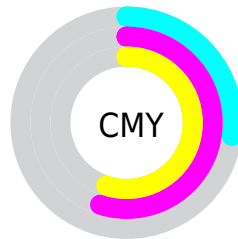


Cyan (0%)

Magenta (39%)

Yellow (39%)

Black (27%)



Cyan (27%)

Magenta (55%)

Yellow (55%)

Brightness & Saturation Gradients

These gradients show how the HunterLab color 48.8234, 22.7972, 10.7871 changes by changing the brightness by 10 percent. The first figure shows a shift by +10% for each color and the second figure -10%.

Similar to the brightness gradients but the following saturation gradients show a change of the HunterLab color 48.8234, 22.7972, 10.7871 by changing the saturation by 10% instead.

■ 48.8234, 22.7972,
10.7871

■ 48.8234, 22.7972,
10.7871

164.9250, 27.4227,
21.8507

■ 39.0049, 21.8328,
9.5488

■ 70.5453, 24.3890,
13.2281

■ 29.9493, 20.7437,
8.2819

■ 82.3642, 25.0431,
14.4427

■ 21.7287, 19.5140,
6.9669

■ 94.7780, 25.6135,
15.6593

■ 14.4385, 18.1392,
5.5680

■ 107.7595, 26.1072,
16.8809

■ 8.0994, 17.3289,
5.6696

121.2849, 26.5302,
18.1094

0.0000, INF, NaN

0.0000, NaN, NaN

135.3332, 26.8876,

19.3464

0.0000, NaN, NaN

149.8855, 27.1838,
20.5932

0.0000, NaN, NaN

■ 48.8234, 22.7972,
10.7871

■ 48.8234, 22.7972,
10.7871

■ 44.3386, 30.0997,
12.8701

■ 53.8192, 15.6153,
8.8123

■ 40.4588, 37.2842,
14.9901

■ 59.2386, 8.6781,
6.9699

■ 37.2882, 43.9314,
17.0219

■ 65.0144, 2.0195,
5.2632

■ 34.9156, 49.4768,
18.7843

■ 71.0921, -4.3666,
3.6826

■ 33.3828, 53.3612,
20.0856

■ 77.4285, -10.5058,
2.2136

■ 32.5783, 55.5114,
20.8201

■ 83.9893, -16.4303,
0.8412

■ 32.5121, 55.6952,
20.8753

■ 90.7474, -22.1726,
-0.4491

■ 94.5012, -25.0278,
-1.5638

Harmonies

Analogous

The Analogous color harmony consists of three colors that are next to each other on the color wheel.



48.8246, 24.7182, -0.7276



48.8234, 22.7972, 10.7871



48.8246, 13.7266, 17.9510

Triad

The Triadic color harmony groups three colors that are evenly spaced from another and form a triangle on the color wheel.



48.8246, 22.7947, 10.7880



48.8246, -20.8177, 15.1309



48.8246, -5.9988, -27.2709

Complementary

The Complementary color scheme is a pair of colors which are on the opposite of each other on the color wheel.



48.8234, 22.7972, 10.7871



65.3175, -22.5549, -2.3163

Split Complementary

Split-complementary colors differ from the complementary color scheme. The scheme consists of three colors, the original color and two neighbors of the complement color.



48.8246, -17.0421, -20.0907



48.8234, 22.7972, 10.7871



48.8246, -24.9942, 5.8166

Square

The Square scheme is like the rectangle color scheme, but the four colors are evenly spaced on the color wheel.



48.8246, 22.7947, 10.7880



48.8246, -11.6653, 19.9626



48.8246, -23.6881, -7.1672



48.8246, 7.1623, -24.9262

Rectangle

The Rectangle color scheme consists of four colors that form a rectangle on the color wheel.



48.8234, 22.7972, 10.7871



48.8246, 5.3206, 20.3102



48.8246, -23.6881, -7.1672



48.8246, -10.0605, -25.8371

Sweetspot

The Sweet Spot groups the original color and five complimentary colors.



48.8246, 22.7947, 10.7880



84.5187, 5.4775, 7.7462



51.0251, 33.7916, -22.5958



39.1842, 3.1150, 3.7740



97.7295, -5.2146, 5.3098



44.2712, -2.3622, 2.4053

Same Dimension

The Same Dimension uses a secret algorithm to generate beautiful new colors.



48.8246, 22.7947, 10.7880



60.0605, 39.0358, 16.8632



57.7627, 4.9837, 19.3383



30.8843, 1.0630, 2.5330



26.9888, 46.2367, 17.3038



5.3483, 9.1763, 3.3234

Inverse Universe

The Inverse Universe completely reimagines the original color for something new.



48.8246, 22.7947, 10.7880



60.0605, 39.0358, 16.8632



54.3425, -6.1081, -17.9154



30.8843, 1.0630, 2.5330



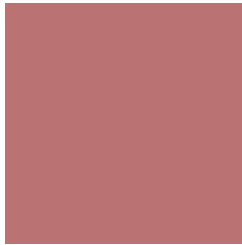
26.9888, 46.2367, 17.3038



5.3483, 9.1763, 3.3234

Previews

White Background



This preview shows how the HunterLab color 48.8234, 22.7972, 10.7871 looks on a white background.

Color Contrast Check

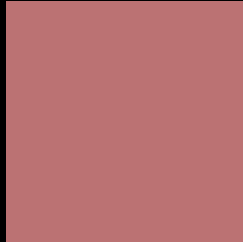
Large Text (above 18pt) WCAG AA ✓ Pass

Any Text WCAG AA × Fail

Large Text (above 18pt) WCAG AAA × Fail

Any Text WCAG AAA × Fail

Black Background



This preview shows how the HunterLab color 48.8234, 22.7972, 10.7871 looks on a black background.

Color Contrast Check

Large Text (above 18pt) WCAG AA ✓ Pass

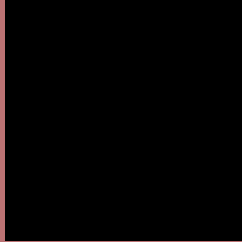
Any Text WCAG AA ✓ Pass

Large Text (above 18pt) WCAG AAA ✓ Pass

Any Text WCAG AAA × Fail

If you want to check with other color combinations, try the [Color Contrast Checker](#).

HunterLab 48.8234, 22.7972, 10.7871 Background



This preview shows how black text looks on a background with the HunterLab color 48.8234, 22.7972, 10.7871.



This preview shows how white text looks on a background with the HunterLab color 48.8234, 22.7972, 10.7871.

Color Blindness Simulation

Color vision deficiency is a very complex topic, and I could not describe the different causes any better than Wikipedia does, so if you want to learn more, you should check out their [article about color blindness](#).

Dichromacy



Original Color

48.8234, 22.7972, 10.7871

Protanopia

49.0100, -2.4571, 6.6851

Deuteranopia

48.8251, 3.3669, 11.5300



Tritanopia

48.8693, 24.4050, 8.5939

Trichromacy



Original Color

48.8234, 22.7972, 10.7871

Protanomaly

48.6078, 5.8279, 7.9894

Deuteranomaly

48.8089, 10.1255, 11.2755

Tritanomaly

48.8196, 24.1600, 9.3095

Monochromacy



Original Color

48.8234, 22.7972, 10.7871

Achromatopsia

49.6187, -2.6475, 2.6959

Achromatomaly

48.9545, 5.9708, 5.5364

CSS Examples

Text

The CSS property to change the color of the text to HunterLab 48.8234, 22.7972, 10.7871 is called "color". The color property can be set on classes, ids or directly on the HTML element.

This example shows how text in the color `rgb(187, 114, 115)` looks like.

```
.text, #text, p{  
    color:rgb(187, 114, 115)  
}
```

If you want to add a text shadow in that color use the text-shadow property, you can generate a text shadow directly with our [CSS Text Shadow Generator](#).

Here you see how black text with a 4 pixel rgb(187, 114, 115) colored shadow looks like.

```
.shadow{ text-shadow: 4px 4px 2px rgb(187, 114, 115) }
```

Border

The CSS property to change the border of an element to HunterLab 48.8234, 22.7972, 10.7871 is called "border". The border property can be set on classes, ids or directly on the HTML element.

This example shows the color as border, it can be applied via the CSS property "border" or "border-color".

```
.border, #border, table{ border:4px solid rgb(187, 114, 115) }
```


If only the border color should be changed use the property `border-color`.

```
.border{ border-color:rgb(187, 114, 115) }
```

If you want to add a box shadow in that color use:

Here you see how a box with a 4 pixel `rgb(187, 114, 115)` colored shadow looks like.

```
.boxshadow{ -moz-box-shadow:4px 4px 4px  
4px rgb(187, 114, 115); -webkit-box-  
shadow:4px 4px 4px 4px rgb(187, 114, 115);  
box-shadow:4px 4px 4px 4px rgb(187, 114,  
115) }
```

Background

The CSS property to change the background color of an element to HunterLab 48.8234, 22.7972, 10.7871 is called "background". The background property can be set on classes, ids or directly on the HTML element.

```
.background, #background, body{  
background: rgb(187, 114, 115) }
```

If only the background color should be changed can be used:

```
.background{ background-color: rgb(187,  
114, 115) }
```

This example shows the color as background, it is applied via the CSS property "background".

To optimize and compress your CSS code, you can use our [online CSS compressor and optimizer](#) based on csstidy. If you want to create a linear or radial gradient as background or border, check our [CSS Gradient Generator](#).

Hey! You found this booklet interesting? Support Converting Colors with the new Membership Option!

The pro membership hides all ads, plus gives you double the colors in the color bucket, and more awesome pro features!

[Learn more, Memberships starting at \\$2.50/m!](#)

**Follow me
on Twitter!**

@ConvertingColor