

Converting Colors

HunterLab(48.9003, 53.9701,
10.7210)

Have a look what the booklet for
HunterLab(48.9003, 53.9701,
10.7210) contains.

HunterLab(48.9539, 53.9800, 10.7272)	3
<i>Conversions</i>	4
<i>Details</i>	6
<i>Harmonies</i>	12
<i>Previews</i>	24
<i>Color Blindness Simulation</i>	28
<i>CSS Examples</i>	31

Color

**HunterLab(48.9539, 53.9800,
10.7272)**

Conversions

Conversions Part 1

Format	Color
Hex	E45375
RGB	228, 83, 117
RGB Percent	89%, 33%, 46%
CMY	0.1059, 0.6745, 0.5412
CMYK	0.00, 0.64, 0.49, 0.11
HSL	346°, 73%, 61%
HSV	346°, 64%, 89%
XYZ	38.2990, 23.9648, 19.4367
YIQ	130.2310, 75.5060, 41.3140

Conversions

Conversions Part 2

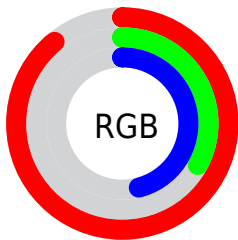
Format	Color
R_{YB}	228, 83, 117
Decimal	14963573
CIE Lab	56.05, 58.73, 11.62
CIE LCh	56, 59.869, 11.190
Yxy	23.9662, 0.4688, 0.2933
Android (android.graphics.Color)	4293153653 (0xFFE45375)
YUV	130.2310, -6.5229, 85.7434
Hunter-Lab	48.9539, 53.9800, 10.7272

Details

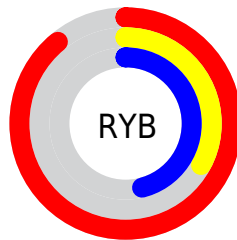
The HunterLab color **48.9539, 53.9800, 10.7272** is a dark color, and the websafe version is hex **CC3366**. The color can be described as middle muted rose. A complement of this color would be **78.2441, -43.2793, 8.7773**, and the grayscale version is **47.3435, -2.5261, 2.5723**.

A 20% lighter version of the original color is **65.2609, 43.4328, 6.8720**, and **30.0262, 49.6799, 8.2543** is the 20% darker color. If you saturate the color by 10%, you get **45.4521, 61.4457, 13.5058**, and if you desaturate by 10%, it is **53.3822, 45.2292, 8.4501**.

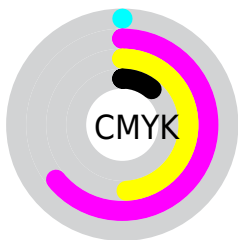
Distribution



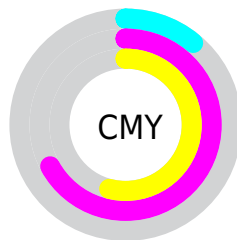
- Red (89%)
- Green (33%)
- Blue (46%)



- Red (89%)
- Yellow (33%)
- Blue (46%)



- Cyan (0%)
- Magenta (64%)
- Yellow (49%)
- Black (11%)



- Cyan (11%)
- Magenta (67%)
- Yellow (54%)

Brightness & Saturation Gradients

These gradients show how the HunterLab color 48.9539, 53.9800, 10.7272 changes by changing the brightness by 10 percent. The first figure shows a shift by +10% for each color and the second figure -10%.

Similar to the brightness gradients but the following saturation gradients show a change of the HunterLab color 48.9539, 53.9800, 10.7272 by changing the saturation by 10% instead.

■ 48.9539, 53.9800,
10.7272

■ 48.9539, 53.9800,
10.7272

165.1210, 67.9523,
21.7403

■ 39.1261, 51.9415,
9.4972

■ 70.6930, 57.7546,
13.1545

■ 30.0603, 49.8414,
8.2393

■ 82.5197, 59.4892,
14.3629

■ 21.8284, 47.7542,
6.9347

■ 94.9409, 61.1235,
15.5738

■ 14.5256, 45.9036,
5.5485

■ 107.9296, 62.6619,
16.7899

■ 8.1866, 45.9787,
5.7306

121.4618, 64.1092,
18.0132

0.0000, INF, NaN

0.0000, NaN, NaN

135.5167, 65.4703,

19.2453

0.0000, NaN, NaN

150.0753, 66.7499,
20.4874

0.0000, NaN, NaN

■ 48.9539, 53.9800,
10.7272

■ 48.9539, 53.9800,
10.7272

■ 45.4521, 61.4457,
13.5058

■ 53.3822, 45.2292,
8.4501

■ 42.9572, 66.9178,
16.5988

■ 58.6137, 35.8494,
6.7356

■ 41.4754, 69.8887,
19.7101

■ 64.5269, 26.2859,
5.5665

■ 40.9331, 70.7373,
21.5031

■ 71.0119, 16.7999,
4.8827

■ 77.9764, 7.5178,
4.6123

■ 85.3460, -1.5159,
4.6865

■ 93.0612, -10.3007,
5.0458

■ 97.5879, -13.8314,
2.4116

Harmonies

Analogous

The Analogous color harmony consists of three colors that are next to each other on the color wheel.



48.9552, 51.6530, -14.4755



48.9539, 53.9800, 10.7272



48.9552, 39.0278, 24.2157

Triad

The Triadic color harmony groups three colors that are evenly spaced from another and form a triangle on the color wheel.



48.9552, 53.9761, 10.7283



48.9552, -30.4008, 26.0867



48.9552, -17.1592, -63.3170

Complementary

The Complementary color scheme is a pair of colors which are on the opposite of each other on the color wheel.



48.9539, 53.9800, 10.7272



78.2441, -43.2793, 8.7773

Split Complementary

Split-complementary colors differ from the complementary color scheme. The scheme consists of three colors, the original color and two neighbors of the complement color.



48.9552, -33.7705, -37.9857



48.9539, 53.9800, 10.7272



48.9552, -40.2897, 15.2266

Square

The Square scheme is like the rectangle color scheme, but the four colors are evenly spaced on the color wheel.



48.9552, 53.9761, 10.7283



48.9552, -11.5915, 29.6366



48.9552, -41.3850, -7.0573



48.9552, 7.0594, -66.6877

Rectangle

The Rectangle color scheme consists of four colors that form a rectangle on the color wheel.



48.9539, 53.9800, 10.7272



48.9552, 22.7491, 28.1744



48.9552, -41.3850, -7.0573



48.9552, -23.6781, -56.6565

Sweetspot

The Sweet Spot groups the original color and five complimentary colors.



48.9552, 53.9761, 10.7283



84.0982, 14.3240, 5.3529



47.9201, 60.5670, -60.2251



37.8677, 8.0373, 2.5284

0.0000, NaN, NaN



46.2646, -2.4686, 2.5136

Same Dimension

The Same Dimension uses a secret algorithm to generate beautiful new colors.



48.9552, 53.9761, 10.7283



50.6683, 71.8137, 16.3197



55.1121, 33.7037, 25.7439



37.9777, 1.7601, 2.1596



31.1293, 53.8433, 15.9794



8.5454, 14.9437, 3.1237

Inverse Universe

The Inverse Universe completely reimagines the original color for something new.



48.9552, 53.9761, 10.7283



50.6683, 71.8137, 16.3197



67.1053, -20.6987, -23.8627



37.9777, 1.7601, 2.1596



31.1293, 53.8433, 15.9794



8.5454, 14.9437, 3.1237

Previews

White Background



This preview shows how the HunterLab color 48.9539, 53.9800, 10.7272 looks on a white background.

Color Contrast Check

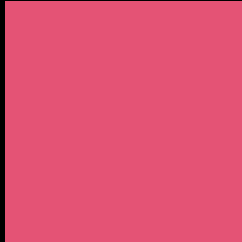
Large Text (above 18pt) WCAG AA ✓ Pass

Any Text WCAG AA × Fail

Large Text (above 18pt) WCAG AAA × Fail

Any Text WCAG AAA × Fail

Black Background



This preview shows how the HunterLab color 48.9539, 53.9800, 10.7272 looks on a black background.

Color Contrast Check

Large Text (above 18pt) WCAG AA ✓ Pass

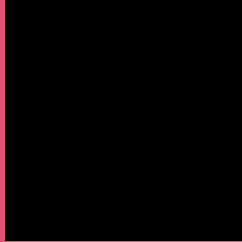
Any Text WCAG AA ✓ Pass

Large Text (above 18pt) WCAG AAA ✓ Pass

Any Text WCAG AAA × Fail

If you want to check with other color combinations, try the [Color Contrast Checker](#).

HunterLab 48.9539, 53.9800, 10.7272 Background



This preview shows how black text looks on a background with the HunterLab color 48.9539, 53.9800, 10.7272.



This preview shows how white text looks on a background with the HunterLab color 48.9539, 53.9800,

Color Blindness Simulation

Color vision deficiency is a very complex topic, and I could not describe the different causes any better than Wikipedia does, so if you want to learn more, you should check out their [article about color blindness](#).

Dichromacy



Original Color

48.9539, 53.9800, 10.7272

Protanopia

49.1245, -0.9749, -1.5924

Deuteranopia

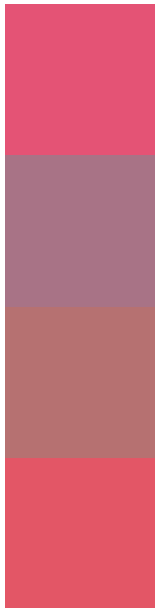
49.1518, 2.9857, 12.5447



Tritanopia

49.0924, 49.1441, 18.6038

Trichromacy



Original Color

48.9539, 53.9800, 10.7272

Protanomaly

47.2308, 17.8086, 1.1023

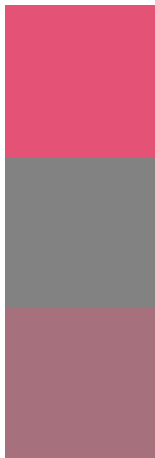
Deuteranomaly

47.9036, 21.1632, 10.5523

Tritanomaly

48.9344, 50.8070, 15.8121

Monochromacy



Original Color

48.9539, 53.9800, 10.7272

Achromatopsia

47.2470, -2.5210, 2.5670

Achromatomaly

46.2579, 16.8025, 3.9299

CSS Examples

Text

The CSS property to change the color of the text to HunterLab 48.9539, 53.9800, 10.7272 is called "color". The color property can be set on classes, ids or directly on the HTML element.

This example shows how text in the color `rgb(228, 83, 117)` looks like.

```
.text, #text, p{  
    color:rgb(228, 83, 117)  
}
```

If you want to add a text shadow in that color use the text-shadow property, you can generate a text shadow directly with our [CSS Text Shadow Generator](#).

Here you see how black text with a 4 pixel rgb(228, 83, 117) colored shadow looks like.

```
.shadow{ text-shadow: 4px 4px 2px rgb(228, 83, 117) }
```

Border

The CSS property to change the border of an element to HunterLab 48.9539, 53.9800, 10.7272 is called "border". The border property can be set on classes, ids or directly on the HTML element.

This example shows the color as border, it can be applied via the CSS property "border" or "border-color".

```
.border, #border, table{ border:4px solid rgb(228, 83, 117) }
```


If only the border color should be changed use the property border-color.

```
.border{ border-color:rgb(228, 83, 117) }
```

If you want to add a box shadow in that color use:

Here you see how a box with a 4 pixel rgb(228, 83, 117) colored shadow looks like.

```
.boxshadow{ -moz-box-shadow:4px 4px 4px  
4px rgb(228, 83, 117); -webkit-box-  
shadow:4px 4px 4px 4px rgb(228, 83, 117);  
box-shadow:4px 4px 4px 4px rgb(228, 83,  
117) }
```

Background

The CSS property to change the background color of an element to HunterLab 48.9539, 53.9800, 10.7272 is called "background". The background property can be set on classes, ids or directly on the HTML element.

```
.background, #background, body{  
background: rgb(228, 83, 117) }
```

If only the background color should be changed can be used:

```
.background{ background-color: rgb(228, 83,  
117) }
```

This example shows the color as background, it is applied via the CSS property "background".

To optimize and compress your CSS code, you can use our [online CSS compressor and optimizer](#) based on csstidy. If you want to create a linear or radial gradient as background or border, check our [CSS Gradient Generator](#).

Hey! You found this booklet interesting? Support Converting Colors with the new Membership Option!

The pro membership hides all ads, plus gives you double the colors in the color bucket, and more awesome pro features!

[Learn more, Memberships starting at \\$2.50/m!](#)

**Follow me
on Twitter!**

@ConvertingColor