

Converting Colors

HunterLab(48.9015, 7.8423,
22.1799)

Have a look what the booklet for
HunterLab(48.9015, 7.8423,
22.1799) contains.

HunterLab(48.9345, 7.8080, 22.2247)	3
<i>Conversions</i>	4
<i>Details</i>	6
<i>Harmonies</i>	12
<i>Previews</i>	24
<i>Color Blindness Simulation</i>	28
<i>CSS Examples</i>	31

Color

**HunterLab(48.9345, 7.8080,
22.2247)**

Conversions

Conversions Part 1

Format	Color
Hex	AC7D4B
RGB	172, 125, 75
RGB Percent	67%, 49%, 29%
CMY	0.3255, 0.5098, 0.7059
CMYK	0.00, 0.27, 0.56, 0.33
HSL	31°, 39%, 48%
HSV	31°, 56%, 67%
XYZ	25.6168, 23.9459, 9.9284
YIQ	133.3530, 44.0620, -5.5860

Conversions

Conversions Part 2

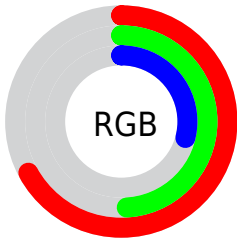
Format	Color
R _{YB}	166, 172, 75
Decimal	11304267
CIE Lab	56.03, 12.48, 34.18
CIE LCh	56, 36.384, 69.939
Yxy	23.9470, 0.4306, 0.4025
Android (android.graphics.Color)	4289494347 (0xFFAC7D4B)
YUV	133.3530, -28.7680, 33.8934
Hunter-Lab	48.9345, 7.8080, 22.2247

Details

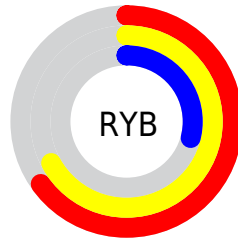
The HunterLab color $48.9345, 7.8080, 22.2247$ is a dark color, and the websafe version is hex 996633 . A complement of this color would be $42.8865, -3.0166, -27.5840$, and the grayscale version is $48.6688, -2.5968, 2.6443$.

A 20% lighter version of the original color is $70.8127, 7.7991, 27.5261$, and $30.0577, 7.5579, 16.4867$ is the 20% darker color. If you saturate the color by 10%, you get $46.6049, 10.7264, 23.8467$, and if you desaturate by 10%, it is $51.3951, 5.1783, 20.0263$.

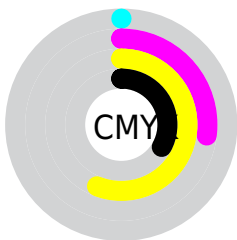
Distribution



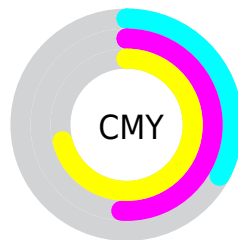
- Red (67%)
- Green (49%)
- Blue (29%)



- Red (65%)
- Yellow (67%)
- Blue (29%)



- Cyan (0%)
- Magenta (27%)
- Yellow (56%)
- Black (33%)



- Cyan (33%)
- Magenta (51%)
- Yellow (71%)

Brightness & Saturation Gradients

These gradients show how the HunterLab color 48.9345, 7.8080, 22.2247 changes by changing the brightness by 10 percent. The first figure shows a shift by +10% for each color and the second figure -10%.

Similar to the brightness gradients but the following saturation gradients show a change of the HunterLab color 48.9345, 7.8080, 22.2247 by changing the saturation by 10% instead.

■ 48.9345, 7.8080,
22.2247

■ 48.9345, 7.8080,
22.2247

165.0917, 6.4676,
43.5111

■ 39.1080, 7.6423,
19.4211

■ 70.6709, 7.9015,
27.4324

■ 30.0437, 7.3866,
16.4293

■ 82.4964, 7.8504,
29.8901

■ 21.8135, 7.0216,
13.2341

■ 94.9166, 7.7415,
32.2760

■ 14.5126, 6.5229,
10.1588

■ 107.9041, 7.5792,
34.6034

■ 8.1736, 6.3008,
5.7215

■ 121.4354, 7.3677,
36.8830

0.0000, NaN, NaN

0.0000, NaN, NaN

135.4892, 7.1101,

39.1232

0.0000, NaN, NaN

150.0469, 6.8093,
41.3307

0.0000, NaN, NaN

■ 48.9345, 7.8080,
22.2247

■ 48.9345, 7.8080,
22.2247

■ 46.6049, 10.7264,
23.8467

■ 51.3951, 5.1783,
20.0263

■ 44.4123, 13.9344,
24.8585

■ 53.9738, 2.8402,
17.2904

■ 42.3667, 17.4094,
25.2468

■ 56.6627, 0.7811,
14.0617

■ 40.4743, 21.1045,
25.0487

■ 59.4535, -1.0135,
10.3837

■ 39.8247, 22.4501,
24.9328

■ 62.3385, -2.5601,
6.2981

■ 65.3105, -3.8761,
1.8433

■ 68.3631, -4.9787,
-2.9459

■ 71.4907, -5.8848,
-8.0383

■ 74.6880, -6.6102,
-13.4059

Harmonies

Analogous

The Analogous color harmony consists of three colors that are next to each other on the color wheel.



48.9357, 21.8354, 17.3457



48.9345, 7.8080, 22.2247



48.9357, -7.5502, 22.8791

Triad

The Triadic color harmony groups three colors that are evenly spaced from another and form a triangle on the color wheel.



48.9357, 7.8057, 22.2253



48.9357, -28.1718, -2.3749



48.9357, 17.5683, -23.7637

Complementary

The Complementary color scheme is a pair of colors which are on the opposite of each other on the color wheel.



48.9345, 7.8080, 22.2247



42.8865, -3.0166, -27.5840

Split Complementary

Split-complementary colors differ from the complementary color scheme. The scheme consists of three colors, the original color and two neighbors of the complement color.



48.9357, 2.5265, -33.3346



48.9345, 7.8080, 22.2247



48.9357, -23.0416, -18.7227

Square

The Square scheme is like the rectangle color scheme, but the four colors are evenly spaced on the color wheel.



48.9357, 7.8057, 22.2253



48.9357, -27.1226, 11.2625



48.9357, -12.2283, -31.2513



48.9357, 27.9307, -7.8491

Rectangle

The Rectangle color scheme consists of four colors that form a rectangle on the color wheel.



48.9345, 7.8080, 22.2247



48.9357, -16.3449, 21.1323



48.9357, -12.2283, -31.2513



48.9357, 12.8213, -28.0205

Sweetspot

The Sweet Spot groups the original color and five complimentary colors.



48.9357, 7.8057, 22.2253



79.7309, -1.1593, 14.4602



39.0455, 37.4380, -3.9896



36.8282, -0.3335, 7.2012



93.2148, -4.9737, 5.0645



40.3295, -2.1519, 2.1912

Same Dimension

The Same Dimension uses a secret algorithm to generate beautiful new colors.



48.9357, 7.8057, 22.2253



61.9191, 15.6293, 32.5887



62.2764, -14.2952, 31.7866



29.4491, -1.0220, 3.6058



34.5152, 19.0023, 21.6008



6.6365, 1.3406, 4.1128

Inverse Universe

The Inverse Universe completely reimagines the original color for something new.



42.8865, -3.0166, -27.5840



52.2024, -1.0634, -48.2710



30.8330, 20.5165, -55.6930



28.9372, -1.9882, -0.5472



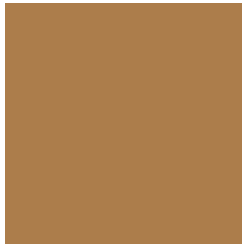
26.3959, 7.3438, -48.8458



5.5113, -0.7318, -5.3089

Previews

White Background



This preview shows how the HunterLab color 48.9345, 7.8080, 22.2247 looks on a white background.

Color Contrast Check

Large Text (above 18pt) WCAG AA ✓ Pass

Any Text WCAG AA × Fail

Large Text (above 18pt) WCAG AAA × Fail

Any Text WCAG AAA × Fail

Black Background



This preview shows how the HunterLab color 48.9345, 7.8080, 22.2247 looks on a black background.

Color Contrast Check

Large Text (above 18pt) WCAG AA ✓ Pass

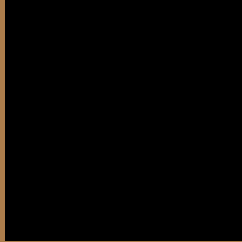
Any Text WCAG AA ✓ Pass

Large Text (above 18pt) WCAG AAA ✓ Pass

Any Text WCAG AAA × Fail

If you want to check with other color combinations, try the [Color Contrast Checker](#).

HunterLab 48.9345, 7.8080, 22.2247 Background



This preview shows how black text looks on a background with the HunterLab color 48.9345, 7.8080, 22.2247.



This preview shows how white text looks on a background with the HunterLab color 48.9345, 7.8080,

Color Blindness Simulation

Color vision deficiency is a very complex topic, and I could not describe the different causes any better than Wikipedia does, so if you want to learn more, you should check out their [article about color blindness](#).

Dichromacy



Original Color

48.9345, 7.8080, 22.2247

Protanopia

49.1670, -5.2571, 21.5127

Deuteranopia

48.8111, 3.3166, 22.2659



Tritanopia

48.9717, 17.8077, 5.7629

Trichromacy



Original Color

48.9345, 7.8080, 22.2247

Protanomaly

48.9250, -0.3893, 21.6319

Deuteranomaly

48.8760, 4.8993, 22.3440

Tritanomaly

48.8803, 14.0686, 12.8170

Monochromacy



Original Color

48.9345, 7.8080, 22.2247

Achromatopsia

48.4304, -2.5841, 2.6313

Achromatomaly

48.3096, 0.2192, 10.9585

CSS Examples

Text

The CSS property to change the color of the text to HunterLab 48.9345, 7.8080, 22.2247 is called "color". The color property can be set on classes, ids or directly on the HTML element.

This example shows how text in the color `rgb(172, 125, 75)` looks like.

```
.text, #text, p{  
    color:rgb(172, 125, 75)  
}
```

If you want to add a text shadow in that color use the text-shadow property, you can generate a text shadow directly with our [CSS Text Shadow Generator](#).

Here you see how black text with a 4 pixel rgb(172, 125, 75) colored shadow looks like.

```
.shadow{ text-shadow: 4px 4px 2px rgb(172, 125, 75) }
```

Border

The CSS property to change the border of an element to HunterLab 48.9345, 7.8080, 22.2247 is called "border". The border property can be set on classes, ids or directly on the HTML element.

This example shows the color as border, it can be applied via the CSS property "border" or "border-color".

```
.border, #border, table{ border:4px solid rgb(172, 125, 75) }
```


If only the border color should be changed use the property `border-color`.

```
.border{ border-color:rgb(172, 125, 75) }
```

If you want to add a box shadow in that color use:

Here you see how a box with a 4 pixel `rgb(172, 125, 75)` colored shadow looks like.

```
.boxshadow{ -moz-box-shadow:4px 4px 4px  
4px rgb(172, 125, 75); -webkit-box-  
shadow:4px 4px 4px 4px rgb(172, 125, 75);  
box-shadow:4px 4px 4px 4px rgb(172, 125,  
75) }
```

Background

The CSS property to change the background color of an element to HunterLab 48.9345, 7.8080, 22.2247 is called "background". The background property can be set on classes, ids or directly on the HTML element.

```
.background, #background, body{  
background: rgb(172, 125, 75) }
```

If only the background color should be changed can be used:

```
.background{ background-color: rgb(172,  
125, 75) }
```

This example shows the color as background, it is applied via the CSS property "background".

To optimize and compress your CSS code, you can use our [online CSS compressor and optimizer](#) based on csstidy. If you want to create a linear or radial gradient as background or border, check our [CSS Gradient Generator](#).

Hey! You found this booklet interesting? Support Converting Colors with the new Membership Option!

The pro membership hides all ads, plus gives you double the colors in the color bucket, and more awesome pro features!

[Learn more, Memberships starting at \\$2.50/m!](#)

**Follow me
on Twitter!**

@ConvertingColor