

Converting Colors

HunterLab(48.9037, 67.5150,
4.3964)

Have a look what the booklet for
HunterLab(48.9037, 67.5150,
4.3964) contains.

HunterLab(48.9891, 67.5185, 4.5126)	3
<i>Conversions</i>	4
<i>Details</i>	6
<i>Harmonies</i>	12
<i>Previews</i>	24
<i>Color Blindness Simulation</i>	28
<i>CSS Examples</i>	31

Color

**HunterLab(48.9891, 67.5185,
4.5126)**

Conversions

Conversions Part 1

Format	Color
Hex	F04185
RGB	240, 65, 133
RGB Percent	94%, 25%, 52%
CMY	0.0588, 0.7451, 0.4784
CMYK	0.00, 0.73, 0.45, 0.06
HSL	337°, 85%, 60%
HSV	337°, 73%, 94%
XYZ	42.0591, 23.9993, 24.6059
YIQ	125.0770, 82.4720, 58.2480

Conversions

Conversions Part 2

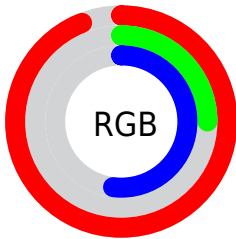
Format	Color
R_{YB}	240, 65, 133
Decimal	15745413
CIE _{Lab}	56.09, 70.29, 2.47
CIE _{LCh}	56, 70.336, 2.011
Yxy	24.0007, 0.4639, 0.2647
Android (android.graphics.Color)	4293935493 (0xFFFF04185)
YUV	125.0770, 3.9060, 100.7875
Hunter-Lab	48.9891, 67.5185, 4.5126

Details

The HunterLab color **48.9891, 67.5185, 4.5126** is a light color, and the websafe version is hex **FF6699**. The color can be described as light washed rose. A complement of this color would be **81.5005, -53.2925, 20.8898**, and the grayscale version is **45.2806, -2.4161, 2.4602**.

A 20% lighter version of the original color is **63.0293, 52.7204, -3.9371**, and **31.7885, 56.4523, 4.9323** is the 20% darker color. If you saturate the color by 10%, you get **46.2900, 73.3060, 7.7240**, and if you desaturate by 10%, it is **52.7256, 59.4939, 2.1767**.

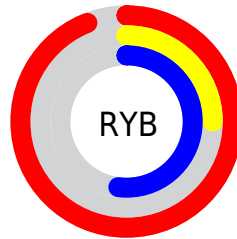
Distribution



Red (94%)

Green (25%)

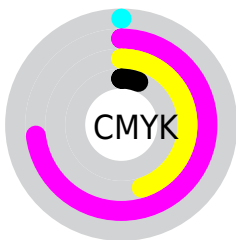
Blue (52%)



Red (94%)

Yellow (25%)

Blue (52%)

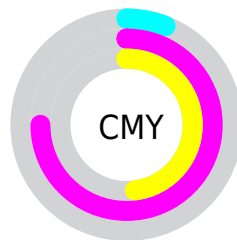


Cyan (0%)

Magenta (73%)

Yellow (45%)

Black (6%)



Cyan (6%)

Magenta (75%)

Yellow (48%)

Brightness & Saturation Gradients

These gradients show how the HunterLab color 48.9891, 67.5185, 4.5126 changes by changing the brightness by 10 percent. The first figure shows a shift by +10% for each color and the second figure -10%.

Similar to the brightness gradients but the following saturation gradients show a change of the HunterLab color 48.9891, 67.5185, 4.5126 by changing the saturation by 10% instead.

48.9891, 67.5185,
4.5126

48.9891, 67.5185,
4.5126

165.1738, 84.5563,
11.7916

39.1588, 65.2117,
3.8403

70.7328, 71.9331,
5.9471

30.0902, 62.9201,
3.1961

82.5616, 74.0110,
6.7052

21.8553, 60.7910,
2.5811

94.9849, 75.9942,
7.4902

14.5491, 59.2234,
1.9939

107.9754, 77.8832,
8.3011

8.2099, 60.5757,
1.6932

121.5095, 79.6804,
9.1373

0.0000, INF, NaN

0.0000, INF, NaN

135.5661, 81.3892,

9.9983

0.0000, NaN, NaN

150.1265, 83.0133,
10.8832

0.0000, NaN, NaN

■ 48.9891, 67.5185,
4.5126

■ 48.9891, 67.5185,
4.5126

■ 46.2900, 73.3060,
7.7240

■ 52.7256, 59.4939,
2.1767

■ 44.6306, 76.3440,
11.5627

■ 57.4102, 50.0003,
0.7804


■ 43.9544, 77.0813,
14.3871

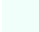
■ 62.9248, 39.7196,
0.2642


■ 69.1460, 29.1431,
0.5054

■ 75.9623, 18.5678,
1.3688

 83.2798, 8.1475,
2.7323

 91.0220, -2.0542,
4.4952

 98.4747, -10.9804,
5.8342

 98.6231, -10.1590,
3.7172

Harmonies

Analogous

The Analogous color harmony consists of three colors that are next to each other on the color wheel.



48.9905, 57.8508, -29.8153



48.9891, 67.5185, 4.5126



48.9905, 55.0176, 23.4442

Triad

The Triadic color harmony groups three colors that are evenly spaced from another and form a triangle on the color wheel.



48.9905, 67.5142, 4.5139



48.9905, -29.0897, 29.8425



48.9905, -26.3908, -72.3849

Complementary

The Complementary color scheme is a pair of colors which are on the opposite of each other on the color wheel.



48.9891, 67.5185, 4.5126



81.5005, -53.2925, 20.8898

Split Complementary

Split-complementary colors differ from the complementary color scheme. The scheme consists of three colors, the original color and two neighbors of the complement color.



48.9905, -41.8783, -35.1864



48.9891, 67.5185, 4.5126



48.9905, -43.1591, 21.7649

Square

The Square scheme is like the rectangle color scheme, but the four colors are evenly spaced on the color wheel.



48.9905, 67.5142, 4.5139



48.9905, -4.5819, 31.6999



48.9905, -47.2262, 0.7446



48.9905, -0.6199, -87.0606

Rectangle

The Rectangle color scheme consists of four colors that form a rectangle on the color wheel.



48.9891, 67.5185, 4.5126



48.9905, 37.1893, 28.9159



48.9905, -47.2262, 0.7446



48.9905, -32.7420, -61.3292

Sweetspot

The Sweet Spot groups the original color and five complimentary colors.



48.9905, 67.5142, 4.5139



82.0153, 18.9457, 1.5701



43.1507, 65.9509, -85.5277



36.9928, 10.1839, 0.5773

0.0000, NaN, NaN



46.2646, -2.4686, 2.5136

Same Dimension

The Same Dimension uses a secret algorithm to generate beautiful new colors.



48.9905, 67.5142, 4.5139



48.6788, 80.3304, 10.0119



50.0189, 55.0185, 25.8545



39.8253, 2.1402, 1.5288



32.5580, 57.1671, 10.1043



9.4910, 16.8557, 1.4655

Inverse Universe

The Inverse Universe completely reimagines the original color for something new.



48.9905, 67.5142, 4.5139



48.6788, 80.3304, 10.0119



77.4110, -33.6338, -16.0287



39.8253, 2.1402, 1.5288



32.5580, 57.1671, 10.1043



9.4910, 16.8557, 1.4655

Previews

White Background



This preview shows how the HunterLab color 48.9891, 67.5185, 4.5126 looks on a white background.

Color Contrast Check

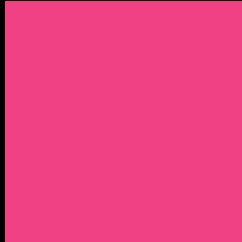
Large Text (above 18pt) WCAG AA ✓ Pass

Any Text WCAG AA × Fail

Large Text (above 18pt) WCAG AAA × Fail

Any Text WCAG AAA × Fail

Black Background



This preview shows how the HunterLab color 48.9891, 67.5185, 4.5126 looks on a black background.

Color Contrast Check

Large Text (above 18pt) WCAG AA ✓ Pass

Any Text WCAG AA ✓ Pass

Large Text (above 18pt) WCAG AAA ✓ Pass

Any Text WCAG AAA × Fail

If you want to check with other color combinations, try the [Color Contrast Checker](#).

HunterLab 48.9891, 67.5185, 4.5126 Background



This preview shows how black text looks on a background with the HunterLab color 48.9891, 67.5185, 4.5126.



This preview shows how white text looks on a background with the HunterLab color 48.9891, 67.5185,

4.5126.

Color Blindness Simulation

Color vision deficiency is a very complex topic, and I could not describe the different causes any better than Wikipedia does, so if you want to learn more, you should check out their [article about color blindness](#).

Dichromacy



Original Color

48.9891, 67.5185, 4.5126

Protanopia

49.1082, 2.5314, -18.0424

Deuteranopia

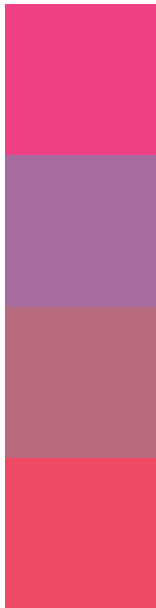
49.0876, 3.4407, 7.2757



Tritanopia

49.0535, 56.7001, 21.5707

Trichromacy



Original Color

48.9891, 67.5185, 4.5126

Protanomaly

46.1902, 24.8464, -13.2063

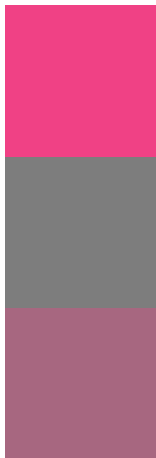
Deuteranomaly

46.9369, 27.2035, 4.0355

Tritanomaly

48.8690, 60.5526, 16.2356

Monochromacy



Original Color

48.9891, 67.5185, 4.5126

Achromatopsia

45.2856, -2.4163, 2.4605

Achromatomaly

44.1299, 22.6118, 0.1508

CSS Examples

Text

The CSS property to change the color of the text to HunterLab 48.9891, 67.5185, 4.5126 is called "color". The color property can be set on classes, ids or directly on the HTML element.

This example shows how text in the color `rgb(240, 65, 133)` looks like.

```
.text, #text, p{  
    color:rgb(240, 65, 133)  
}
```

If you want to add a text shadow in that color use the text-shadow property, you can generate a text shadow directly with our [CSS Text Shadow Generator](#).

Here you see how black text with a 4 pixel rgb(240, 65, 133) colored shadow looks like.

```
.shadow{ text-shadow: 4px 4px 2px rgb(240, 65, 133) }
```

Border

The CSS property to change the border of an element to HunterLab 48.9891, 67.5185, 4.5126 is called "border". The border property can be set on classes, ids or directly on the HTML element.

This example shows the color as border, it can be applied via the CSS property "border" or "border-color".

```
.border, #border, table{ border:4px solid rgb(240, 65, 133) }
```


If only the border color should be changed use the property `border-color`.

```
.border{ border-color:rgb(240, 65, 133) }
```

If you want to add a box shadow in that color use:

Here you see how a box with a 4 pixel `rgb(240, 65, 133)` colored shadow looks like.

```
.boxshadow{ -moz-box-shadow:4px 4px 4px  
4px rgb(240, 65, 133); -webkit-box-  
shadow:4px 4px 4px 4px rgb(240, 65, 133);  
box-shadow:4px 4px 4px 4px rgb(240, 65,  
133) }
```

Background

The CSS property to change the background color of an element to HunterLab 48.9891, 67.5185, 4.5126 is called "background". The background property can be set on classes, ids or directly on the HTML element.

```
.background, #background, body{  
background: rgb(240, 65, 133) }
```

If only the background color should be changed can be used:

```
.background{ background-color: rgb(240, 65,  
133) }
```

This example shows the color as background, it is applied via the CSS property "background".

To optimize and compress your CSS code, you can use our [online CSS compressor and optimizer](#) based on csstidy. If you want to create a linear or radial gradient as background or border, check our [CSS Gradient Generator](#).

Hey! You found this booklet interesting? Support Converting Colors with the new Membership Option!

The pro membership hides all ads, plus gives you double the colors in the color bucket, and more awesome pro features!

[Learn more, Memberships starting at \\$2.50/m!](#)

**Follow me
on Twitter!**

@ConvertingColor