

Converting Colors

HunterLab(48.9202, 15.4624,
14.3641)

Have a look what the booklet for
HunterLab(48.9202, 15.4624,
14.3641) contains.

HunterLab(49.0271, 15.6244, 14.3216)	3
<i>Conversions</i>	4
<i>Details</i>	6
<i>Harmonies</i>	12
<i>Previews</i>	24
<i>Color Blindness Simulation</i>	28
<i>CSS Examples</i>	31

Color

**HunterLab(49.0271, 15.6244,
14.3216)**

Conversions

Conversions Part 1

Format	Color
Hex	B37869
RGB	179, 120, 105
RGB Percent	70%, 47%, 41%
CMY	0.2980, 0.5294, 0.5882
CMYK	0.00, 0.33, 0.41, 0.30
HSL	12°, 33%, 56%
HSV	12°, 41%, 70%
XYZ	27.8567, 24.0366, 16.5359
YIQ	135.9310, 39.9790, 7.8430

Conversions

Conversions Part 2

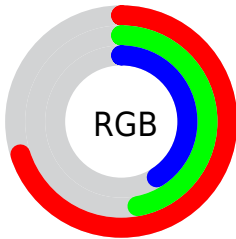
Format	Color
R_{YB}	179, 124, 105
Decimal	11761769
CIE _{Lab}	56.13, 21.24, 17.65
CIE _{LCh}	56, 27.615, 39.722
Yxy	24.0377, 0.4071, 0.3513
Android (android.graphics.Color)	4289951849 (0xFFB37869)
YUV	135.9310, -15.2490, 37.7715
Hunter-Lab	49.0271, 15.6244, 14.3216

Details

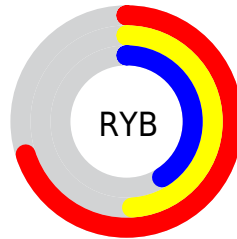
The HunterLab color **49.0271, 15.6244, 14.3216** is a dark color, and the websafe version is hex **996666**. A complement of this color would be **57.2778, -15.3544, -9.1205**, and the grayscale version is **49.6397, -2.6486, 2.6970**.

A 20% lighter version of the original color is **70.9168, 16.5206, 17.6920**, and **30.1613, 14.2655, 10.9661** is the 20% darker color. If you saturate the color by 10%, you get **45.3065, 20.9487, 16.4563**, and if you desaturate by 10%, it is **53.0450, 10.5548, 11.9622**.

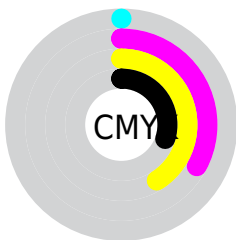
Distribution



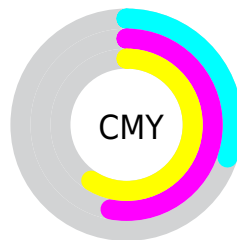
- Red (70%)
- Green (47%)
- Blue (41%)



- Red (70%)
- Yellow (49%)
- Blue (41%)



- Cyan (0%)
- Magenta (33%)
- Yellow (41%)
- Black (30%)



- Cyan (30%)
- Magenta (53%)
- Yellow (59%)

Brightness & Saturation Gradients

These gradients show how the HunterLab color 49.0271, 15.6244, 14.3216 changes by changing the brightness by 10 percent. The first figure shows a shift by +10% for each color and the second figure -10%.

Similar to the brightness gradients but the following saturation gradients show a change of the HunterLab color 49.0271, 15.6244, 14.3216 by changing the saturation by 10% instead.

■ 49.0271, 15.6244,
14.3216

■ 49.0271, 15.6244,
14.3216

165.2305, 17.5213,
27.9488

■ 39.1939, 15.0182,
12.6926

■ 70.7755, 16.5376,
17.4528

■ 30.1224, 14.2985,
10.9932

■ 82.6066, 16.8701,
18.9781

■ 21.8842, 13.4445,
9.1900

■ 95.0320, 17.1298,
20.4875

■ 14.5743, 12.4348,
7.3139

■ 108.0246, 17.3229,
21.9864

■ 8.2349, 11.7230,
5.7644

121.5607, 17.4544,
23.4792

0.0000, INF, NaN

0.0000, NaN, NaN

135.6192, 17.5289,

24.9689

0.0000, NaN, NaN

150.1814, 17.5502,
26.4581

0.0000, NaN, NaN

■ 49.0271, 15.6244,
14.3216

■ 49.0271, 15.6244,
14.3216

■ 45.3065, 20.9487,
16.4563

■ 53.0450, 10.5548,
11.9622

■ 41.9256, 26.4767,
18.2894

■ 57.3170, 5.7640,
9.4329

■ 38.9361, 32.0869,
19.7316

■ 61.8109, 1.2430,
6.7766


■ 36.3898, 37.5801,
20.6886


■ 66.4988, -3.0278,
4.0231


■ 34.3325, 42.6742,
21.0894


■ 71.3577, -7.0729,
1.1935

 32.9595, 46.4665,
21.1230

 76.3685, -10.9181,
-1.6972

 81.5152, -14.5884,
-4.6388

 86.7847, -18.1062,
-7.6239

 91.7659, -23.7605,
-4.9964

Harmonies

Analogous

The Analogous color harmony consists of three colors that are next to each other on the color wheel.



49.0283, 21.1981, 6.0978



49.0271, 15.6244, 14.3216



49.0283, 5.3025, 18.6141

Triad

The Triadic color harmony groups three colors that are evenly spaced from another and form a triangle on the color wheel.



49.0283, 15.6221, 14.3224



49.0283, -21.7269, 9.4286



49.0283, 1.1811, -22.9958

Complementary

The Complementary color scheme is a pair of colors which are on the opposite of each other on the color wheel.



49.0271, 15.6244, 14.3216



57.2778, -15.3544, -9.1205

Split Complementary

Split-complementary colors differ from the complementary color scheme. The scheme consists of three colors, the original color and two neighbors of the complement color.



49.0283, -10.0668, -21.5170



49.0271, 15.6244, 14.3216



49.0283, -22.6097, -1.0274

Square

The Square scheme is like the rectangle color scheme, but the four colors are evenly spaced on the color wheel.



49.0283, 15.6221, 14.3224



49.0283, -15.9956, 16.2748



49.0283, -18.5297, -12.8097



49.0283, 12.3666, -16.4778

Rectangle

The Rectangle color scheme consists of four colors that form a rectangle on the color wheel.



49.0271, 15.6244, 14.3216



49.0283, -2.5112, 19.4189



49.0283, -18.5297, -12.8097



49.0283, -2.7261, -23.4465

Sweetspot

The Sweet Spot groups the original color and five complimentary colors.



49.0283, 15.6221, 14.3224



82.1905, 2.1716, 9.3811



47.3018, 31.7933, -14.4384



38.3176, 1.3799, 4.6332



95.4677, -5.0939, 5.1869



42.2927, -2.2566, 2.2978

Same Dimension

The Same Dimension uses a secret algorithm to generate beautiful new colors.



49.0283, 15.6221, 14.3224



60.8692, 27.6745, 21.8901



58.8643, -2.4477, 22.7675



29.6229, 0.1701, 2.9400



27.8450, 38.6299, 17.8342



5.7037, 4.7104, 3.5971

Inverse Universe

The Inverse Universe completely reimagines the original color for something new.



57.2778, -15.3544, -9.1205



74.1026, -22.5774, -15.8467



46.3558, 1.9659, -25.9487



30.5500, -3.2523, 0.3185



40.2661, -14.1372, -19.8110



7.6445, -3.1758, -2.6995

Previews

White Background



This preview shows how the HunterLab color 49.0271, 15.6244, 14.3216 looks on a white background.

Color Contrast Check

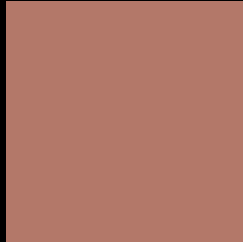
Large Text (above 18pt) WCAG AA ✓ Pass

Any Text WCAG AA × Fail

Large Text (above 18pt) WCAG AAA × Fail

Any Text WCAG AAA × Fail

Black Background



This preview shows how the HunterLab color 49.0271, 15.6244, 14.3216 looks on a black background.

Color Contrast Check

Large Text (above 18pt) WCAG AA ✓ Pass

Any Text WCAG AA ✓ Pass

Large Text (above 18pt) WCAG AAA ✓ Pass

Any Text WCAG AAA × Fail

If you want to check with other color combinations, try the [Color Contrast Checker](#).

HunterLab 49.0271, 15.6244, 14.3216 Background



This preview shows how black text looks on a background with the HunterLab color 49.0271, 15.6244, 14.3216.



This preview shows how white text looks on a background with the HunterLab color 49.0271, 15.6244,

Color Blindness Simulation

Color vision deficiency is a very complex topic, and I could not describe the different causes any better than Wikipedia does, so if you want to learn more, you should check out their [article about color blindness](#).

Dichromacy



Original Color

49.0271, 15.6244, 14.3216

Protanopia

49.2428, -3.7307, 11.8210

Deuteranopia

48.9376, 3.3546, 14.6674



Tritanopia

49.0435, 20.3898, 6.7148

Trichromacy



Original Color

49.0271, 15.6244, 14.3216

Protanomaly

49.0285, 2.5263, 12.7593

Deuteranomaly

49.0185, 7.7505, 14.4997

Tritanomaly

48.9573, 18.4950, 9.7341

Monochromacy



Original Color

49.0271, 15.6244, 14.3216

Achromatopsia

49.6187, -2.6475, 2.6959

Achromatomaly

49.1135, 3.5793, 6.9039

CSS Examples

Text

The CSS property to change the color of the text to HunterLab 49.0271, 15.6244, 14.3216 is called "color". The color property can be set on classes, ids or directly on the HTML element.

This example shows how text in the color `rgb(179, 120, 105)` looks like.

```
.text, #text, p{  
    color:rgb(179, 120, 105)  
}
```

If you want to add a text shadow in that color use the text-shadow property, you can generate a text shadow directly with our [CSS Text Shadow Generator](#).

Here you see how black text with a 4 pixel rgb(179, 120, 105) colored shadow looks like.

```
.shadow{ text-shadow: 4px 4px 2px rgb(179, 120, 105) }
```

Border

The CSS property to change the border of an element to HunterLab 49.0271, 15.6244, 14.3216 is called "border". The border property can be set on classes, ids or directly on the HTML element.

This example shows the color as border, it can be applied via the CSS property "border" or "border-color".

```
.border, #border, table{ border:4px solid rgb(179, 120, 105) }
```


If only the border color should be changed use the property `border-color`.

```
.border{ border-color:rgb(179, 120, 105) }
```

If you want to add a box shadow in that color use:

Here you see how a box with a 4 pixel `rgb(179, 120, 105)` colored shadow looks like.

```
.boxshadow{ -moz-box-shadow:4px 4px 4px  
4px rgb(179, 120, 105); -webkit-box-  
shadow:4px 4px 4px 4px rgb(179, 120, 105);  
box-shadow:4px 4px 4px 4px rgb(179, 120,  
105) }
```

Background

The CSS property to change the background color of an element to HunterLab 49.0271, 15.6244, 14.3216 is called "background". The background property can be set on classes, ids or directly on the HTML element.

```
.background, #background, body{  
background: rgb(179, 120, 105) }
```

If only the background color should be changed can be used:

```
.background{ background-color: rgb(179,  
120, 105) }
```

This example shows the color as background, it is applied via the CSS property "background".

To optimize and compress your CSS code, you can use our [online CSS compressor and optimizer](#) based on csstidy. If you want to create a linear or radial gradient as background or border, check our [CSS Gradient Generator](#).

Hey! You found this booklet interesting? Support Converting Colors with the new Membership Option!

The pro membership hides all ads, plus gives you double the colors in the color bucket, and more awesome pro features!

[Learn more, Memberships starting at \\$2.50/m!](#)

**Follow me
on Twitter!**

@ConvertingColor