

Converting Colors

HunterLab(48.9526, 50.9625,
2.2586)

Have a look what the booklet for
HunterLab(48.9526, 50.9625,
2.2586) contains.

HunterLab(48.9911, 50.9716, 2.4382)	3
<i>Conversions</i>	4
<i>Details</i>	6
<i>Harmonies</i>	12
<i>Previews</i>	24
<i>Color Blindness Simulation</i>	28
<i>CSS Examples</i>	31

Color

**HunterLab(48.9911, 50.9716,
2.4382)**

Conversions

Conversions Part 1

Format	Color
Hex	DC5889
RGB	220, 88, 137
RGB Percent	86%, 35%, 54%
CMY	0.1373, 0.6549, 0.4627
CMYK	0.00, 0.60, 0.38, 0.14
HSL	338°, 65%, 60%
HSV	338°, 60%, 86%
XYZ	37.5203, 24.0013, 26.3221
YIQ	133.0540, 62.9430, 43.2230

Conversions

Conversions Part 2

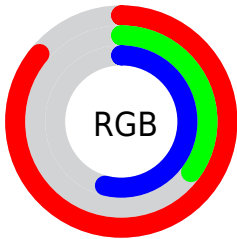
Format	Color
R_{YB}	220, 88, 137
Decimal	14440585
CIE Lab	56.09, 56.05, -0.30
CIE LCh	56, 56.055, 359.696
Yxy	24.0025, 0.4271, 0.2732
Android (android.graphics.Color)	4292630665 (0xFFDC5889)
YUV	133.0540, 1.9454, 76.2516
Hunter-Lab	48.9911, 50.9716, 2.4382

Details

The HunterLab color **48.9911, 50.9716, 2.4382** is a dark color, and the websafe version is hex **FF6699**. The color can be described as middle muted rose. A complement of this color would be **74.9680, -43.1684, 14.9657**, and the grayscale version is **48.4283, -2.5840, 2.6312**.

A 20% lighter version of the original color is **66.8002, 44.3819, -1.2993**, and **30.0816, 47.1062, 1.5890** is the 20% darker color. If you saturate the color by 10%, you get **45.3291, 58.6945, 4.3772**, and if you desaturate by 10%, it is **53.4773, 42.1474, 1.3077**.

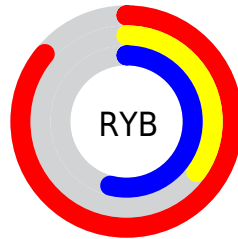
Distribution



Red (86%)

Green (35%)

Blue (54%)



Red (86%)

Yellow (35%)

Blue (54%)

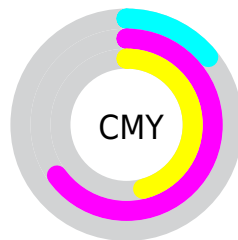


Cyan (0%)

Magenta (60%)

Yellow (38%)

Black (14%)



Cyan (14%)

Magenta (65%)

Yellow (46%)

Brightness & Saturation Gradients

These gradients show how the HunterLab color 48.9911, 50.9716, 2.4382 changes by changing the brightness by 10 percent. The first figure shows a shift by +10% for each color and the second figure -10%.

Similar to the brightness gradients but the following saturation gradients show a change of the HunterLab color 48.9911, 50.9716, 2.4382 by changing the saturation by 10% instead.

■ 48.9911, 50.9716,
2.4382

■ 48.9911, 50.9716,
2.4382

165.1767, 64.1842,
8.6505

■ 39.1606, 49.0086,
1.9205

■ 70.7350, 54.5801,
3.5935

■ 30.0918, 46.9701,
1.4445

■ 82.5639, 56.2285,
4.2238

■ 21.8568, 44.9172,
1.0157

■ 94.9872, 57.7763,
4.8871

■ 14.5504, 43.0397,
0.6399

■ 107.9779, 59.2285,
5.5819

■ 8.2112, 42.8475,
0.2970

121.5121, 60.5905,
6.3068

0.0000, INF, NaN

0.0000, NaN, NaN

135.5688, 61.8673,

7.0605

0.0000, NaN, NaN

150.1293, 63.0638,
7.8421

0.0000, NaN, NaN

■ 48.9911, 50.9716,
2.4382

■ 48.9911, 50.9716,
2.4382

■ 45.3291, 58.6945,
4.3772

■ 53.4773, 42.1474,
1.3077

■ 42.5780, 64.6496,
7.0905

■ 58.6727, 32.7932,
0.9156

■ 40.7739, 68.2564,
10.4033

■ 64.4702, 23.2837,
1.1548

■ 39.7743, 69.6323,
13.9278

■ 70.7744, 13.8361,
1.9119

■ 39.7740, 69.6327,
13.9290

■ 77.5061, 4.5563,
3.0867

■ 84.6013, -4.5171,
4.5970

■ 92.0086, -13.3825,
6.3781

■ 96.6916, -17.5224,
4.9819

■ 96.9307, -16.1836,
1.5758

Harmonies

Analogous

The Analogous color harmony consists of three colors that are next to each other on the color wheel.



48.9924, 42.5827, -24.2111



48.9911, 50.9716, 2.4382



48.9924, 42.9015, 19.4821

Triad

The Triadic color harmony groups three colors that are evenly spaced from another and form a triangle on the color wheel.



48.9924, 50.9682, 2.4394



48.9924, -22.9693, 27.1775



48.9924, -23.3111, -50.5293

Complementary

The Complementary color scheme is a pair of colors which are on the opposite of each other on the color wheel.



48.9911, 50.9716, 2.4382



74.9680, -43.1684, 14.9657

Split Complementary

Split-complementary colors differ from the complementary color scheme. The scheme consists of three colors, the original color and two neighbors of the complement color.



48.9924, -35.8886, -23.6210



48.9911, 50.9716, 2.4382



48.9924, -35.7188, 19.7178

Square

The Square scheme is like the rectangle color scheme, but the four colors are evenly spaced on the color wheel.



48.9924, 50.9682, 2.4394



48.9924, -2.3781, 29.0607



48.9924, -39.9727, 2.8931



48.9924, -2.8549, -62.3225

Rectangle

The Rectangle color scheme consists of four colors that form a rectangle on the color wheel.



48.9911, 50.9716, 2.4382



48.9924, 30.0074, 25.3634



48.9924, -39.9727, 2.8931



48.9924, -28.4504, -42.4775

Sweetspot

The Sweet Spot groups the original color and five complimentary colors.



48.9924, 50.9682, 2.4394



85.0932, 14.3117, 2.4825



45.4177, 49.6547, -59.5359



38.3177, 8.1243, 0.9886

0.0000, NaN, NaN



46.2646, -2.4686, 2.5136

Same Dimension

The Same Dimension uses a secret algorithm to generate beautiful new colors.



48.9924, 50.9682, 2.4394



52.6286, 71.4446, 5.9250



50.6971, 38.6236, 21.1162



36.2368, 1.8783, 1.4717



30.5028, 53.4641, 10.1980



7.8684, 13.9906, 1.0858

Inverse Universe

The Inverse Universe completely reimagines the original color for something new.



48.9924, 50.9682, 2.4394



52.6286, 71.4446, 5.9250



71.2140, -27.6733, -12.9756



36.2368, 1.8783, 1.4717



30.5028, 53.4641, 10.1980



7.8684, 13.9906, 1.0858

Previews

White Background



This preview shows how the HunterLab color 48.9911, 50.9716, 2.4382 looks on a white background.

Color Contrast Check

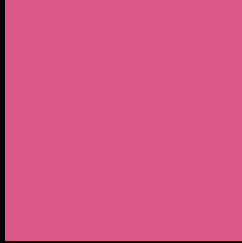
Large Text (above 18pt) WCAG AA ✓ Pass

Any Text WCAG AA × Fail

Large Text (above 18pt) WCAG AAA × Fail

Any Text WCAG AAA × Fail

Black Background



This preview shows how the HunterLab color 48.9911, 50.9716, 2.4382 looks on a black background.

Color Contrast Check

Large Text (above 18pt) WCAG AA ✓ Pass

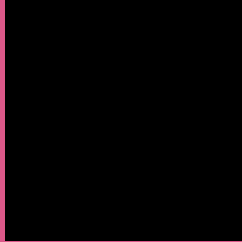
Any Text WCAG AA ✓ Pass

Large Text (above 18pt) WCAG AAA ✓ Pass

Any Text WCAG AAA × Fail

If you want to check with other color combinations, try the [Color Contrast Checker](#).

HunterLab 48.9911, 50.9716, 2.4382 Background



This preview shows how black text looks on a background with the HunterLab color 48.9911, 50.9716, 2.4382.



This preview shows how white text looks on a background with the HunterLab color 48.9911, 50.9716,

Color Blindness Simulation

Color vision deficiency is a very complex topic, and I could not describe the different causes any better than Wikipedia does, so if you want to learn more, you should check out their [article about color blindness](#).

Dichromacy



Original Color

48.9911, 50.9716, 2.4382

Protanopia

49.3518, 1.2308, -12.3338

Deuteranopia

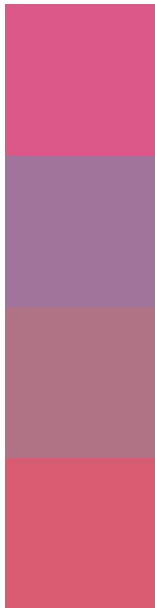
49.0795, 3.7874, 4.3690



Tritanopia

48.8830, 42.6462, 15.6215

Trichromacy



Original Color

48.9911, 50.9716, 2.4382

Protanomaly

47.6090, 17.8236, -8.9703

Deuteranomaly

48.0301, 20.1691, 2.5565

Tritanomaly

48.7827, 45.7539, 11.1475

Monochromacy



Original Color

48.9911, 50.9716, 2.4382

Achromatopsia

48.4304, -2.5841, 2.6313

Achromatomaly

47.3742, 15.7434, 1.2402

CSS Examples

Text

The CSS property to change the color of the text to HunterLab 48.9911, 50.9716, 2.4382 is called "color". The color property can be set on classes, ids or directly on the HTML element.

This example shows how text in the color `rgb(220, 88, 137)` looks like.

```
.text, #text, p{  
    color:rgb(220, 88, 137)  
}
```

If you want to add a text shadow in that color use the text-shadow property, you can generate a text shadow directly with our [CSS Text Shadow Generator](#).

Here you see how black text with a 4 pixel rgb(220, 88, 137) colored shadow looks like.

```
.shadow{ text-shadow: 4px 4px 2px rgb(220, 88, 137) }
```

Border

The CSS property to change the border of an element to HunterLab 48.9911, 50.9716, 2.4382 is called "border". The border property can be set on classes, ids or directly on the HTML element.

This example shows the color as border, it can be applied via the CSS property "border" or "border-color".

```
.border, #border, table{ border:4px solid rgb(220, 88, 137) }
```


If only the border color should be changed use the property `border-color`.

```
.border{ border-color:rgb(220, 88, 137) }
```

If you want to add a box shadow in that color use:

Here you see how a box with a 4 pixel `rgb(220, 88, 137)` colored shadow looks like.

```
.boxshadow{ -moz-box-shadow:4px 4px 4px  
4px rgb(220, 88, 137); -webkit-box-  
shadow:4px 4px 4px 4px rgb(220, 88, 137);  
box-shadow:4px 4px 4px 4px rgb(220, 88,  
137) }
```

Background

The CSS property to change the background color of an element to HunterLab 48.9911, 50.9716, 2.4382 is called "background". The background property can be set on classes, ids or directly on the HTML element.

```
.background, #background, body{  
background: rgb(220, 88, 137) }
```

If only the background color should be changed can be used:

```
.background{ background-color: rgb(220, 88,  
137) }
```

This example shows the color as background, it is applied via the CSS property "background".

To optimize and compress your CSS code, you can use our [online CSS compressor and optimizer](#) based on csstidy. If you want to create a linear or radial gradient as background or border, check our [CSS Gradient Generator](#).

Hey! You found this booklet interesting? Support Converting Colors with the new Membership Option!

The pro membership hides all ads, plus gives you double the colors in the color bucket, and more awesome pro features!

[Learn more, Memberships starting at \\$2.50/m!](#)

**Follow me
on Twitter!**

@ConvertingColor