

Converting Colors

HunterLab(48.9904, 7.4125,
19.8134)

Have a look what the booklet for
HunterLab(48.9904, 7.4125,
19.8134) contains.

HunterLab(49.1158, 7.3684, 20.0193)	3
<i>Conversions</i>	4
<i>Details</i>	6
<i>Harmonies</i>	12
<i>Previews</i>	24
<i>Color Blindness Simulation</i>	28
<i>CSS Examples</i>	31

Color

**HunterLab(49.1158, 7.3684,
20.0193)**

Conversions

Conversions Part 1

Format	Color
Hex	AA7E55
RGB	170, 126, 85
RGB Percent	67%, 49%, 33%
CMY	0.3333, 0.5059, 0.6667
CMYK	0.00, 0.26, 0.50, 0.33
HSL	29°, 33%, 50%
HSV	29°, 50%, 67%
XYZ	25.6781, 24.1236, 11.8973
YIQ	134.4820, 39.3850, -3.4230

Conversions

Conversions Part 2

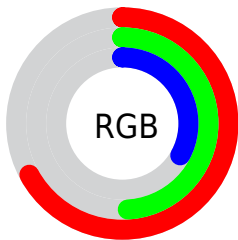
Format	Color
RYB	170, 164, 85
Decimal	11173461
CIELab	56.21, 11.97, 28.89
CIELCh	56, 31.270, 67.491
Yxy	24.1248, 0.4162, 0.3910
Android (android.graphics.Color)	4289363541 (0xFFAA7E55)
YUV	134.4820, -24.3946, 31.1493
Hunter-Lab	49.1158, 7.3684, 20.0193

Details

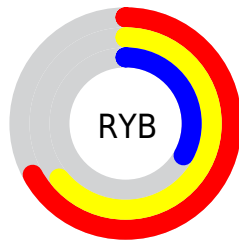
The HunterLab color $49.1158, 7.3684, 20.0193$ is a dark color, and the websafe version is hex 996633 . A complement of this color would be $45.3136, -5.0371, -21.9261$, and the grayscale version is $49.1003, -2.6199, 2.6677$.

A 20% lighter version of the original color is $70.9368, 7.1417, 24.6777$, and $30.1647, 6.9215, 14.9357$ is the 20% darker color. If you saturate the color by 10%, you get $46.6196, 10.3320, 21.9522$, and if you desaturate by 10%, it is $51.7480, 4.6875, 17.5661$.

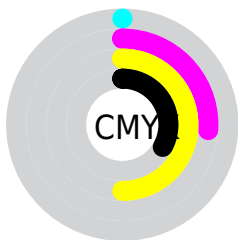
Distribution



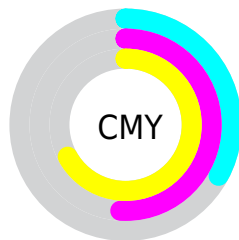
- Red (67%)
- Green (49%)
- Blue (33%)



- Red (67%)
- Yellow (64%)
- Blue (33%)



- Cyan (0%)
- Magenta (26%)
- Yellow (50%)
- Black (33%)



- Cyan (33%)
- Magenta (51%)
- Yellow (67%)

Brightness & Saturation Gradients

These gradients show how the HunterLab color 49.1158, 7.3684, 20.0193 changes by changing the brightness by 10 percent. The first figure shows a shift by +10% for each color and the second figure -10%.

Similar to the brightness gradients but the following saturation gradients show a change of the HunterLab color 49.1158, 7.3684, 20.0193 by changing the saturation by 10% instead.

■ 49.1158, 7.3684,
20.0193

■ 49.1158, 7.3684,
20.0193

165.3635, 5.8267,
38.7819

■ 39.2762, 7.2311,
17.6021

■ 70.8758, 7.4102,
24.5418

■ 30.1978, 7.0056,
15.0331

■ 82.7121, 7.3351,
26.6918

■ 21.9520, 6.6731,
12.2580

■ 95.1426, 7.2032,
28.7885

■ 14.6336, 6.2098,
10.2435

■ 108.1400, 7.0190,
30.8429

■ 8.2932, 5.9409,
5.8052

■ 121.6807, 6.7862,
32.8634

0.0000, NaN, NaN

0.0000, NaN, NaN

135.7437, 6.5082,

34.8566

0.0000, NaN, NaN

150.3102, 6.1875,
36.8280

0.0000, NaN, NaN

■ 49.1158, 7.3684,
20.0193

■ 49.1158, 7.3684,
20.0193

■ 46.6196, 10.3320,
21.9522

■ 51.7480, 4.6875,
17.5661

■ 44.2674, 13.5838,
23.3201

■ 54.5017, 2.2880,
14.6372

■ 42.0721, 17.1076,
24.0913

■ 57.3680, 0.1543,
11.2792

■ 40.0448, 20.8698,
24.2555

■ 60.3375, -1.7301,
7.5351

■ 38.1863, 24.7721,
23.9638

■ 63.4019, -3.3831,
3.4443

■ 38.1861, 24.7724,
23.9638

■ 66.5536, -4.8226,
-0.9576

■ 69.7861, -6.0664,
-5.6396

■ 73.0932, -7.1309,
-10.5742

■ 76.4697, -8.0317,
-15.7374

Harmonies

Analogous

The Analogous color harmony consists of three colors that are next to each other on the color wheel.



49.1170, 18.9352, 15.1051



49.1158, 7.3684, 20.0193



49.1170, -5.8548, 20.9522

Triad

The Triadic color harmony groups three colors that are evenly spaced from another and form a triangle on the color wheel.



49.1170, 7.3662, 20.0199



49.1170, -25.1264, -0.5441



49.1170, 13.6163, -20.3120

Complementary

The Complementary color scheme is a pair of colors which are on the opposite of each other on the color wheel.



49.1158, 7.3684, 20.0193



45.3136, -5.0371, -21.9261

Split Complementary

Split-complementary colors differ from the complementary color scheme. The scheme consists of three colors, the original color and two neighbors of the complement color.



49.1170, 0.6938, -27.4023



49.1158, 7.3684, 20.0193



49.1170, -21.0049, -14.2036

Square

The Square scheme is like the rectangle color scheme, but the four colors are evenly spaced on the color wheel.



49.1170, 7.3662, 20.0199



49.1170, -23.7386, 10.9688



49.1170, -11.8734, -24.9150



49.1170, 22.7985, -7.3806

Rectangle

The Rectangle color scheme consists of four colors that form a rectangle on the color wheel.



49.1158, 7.3684, 20.0193



49.1170, -13.6874, 19.4961



49.1170, -11.8734, -24.9150



49.1170, 9.5158, -23.5930

Sweetspot

The Sweet Spot groups the original color and five complimentary colors.



49.1170, 7.3662, 20.0199



79.1487, -1.0324, 12.8704



40.8214, 32.9730, -5.1135



36.9914, -0.2381, 6.5596



93.2148, -4.9737, 5.0645



40.3295, -2.1519, 2.1912

Same Dimension

The Same Dimension uses a secret algorithm to generate beautiful new colors.



49.1170, 7.3662, 20.0199



62.4417, 14.3756, 29.8081



60.7457, -12.0782, 28.8311



28.4906, -0.8736, 3.4117



32.9201, 20.8495, 20.6502



6.0546, 1.3006, 3.7536

Inverse Universe

The Inverse Universe completely reimagines the original color for something new.



45.3136, -5.0371, -21.9261



56.3091, -5.2644, -38.0494



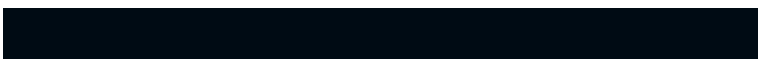
34.3307, 15.2001, -44.2584



28.1402, -2.0460, -0.4330



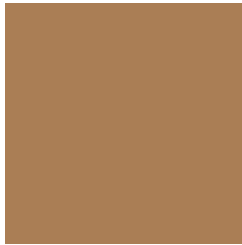
27.1668, 4.7599, -44.2315



5.3037, -1.0515, -4.3593

Previews

White Background



This preview shows how the HunterLab color 49.1158, 7.3684, 20.0193 looks on a white background.

Color Contrast Check

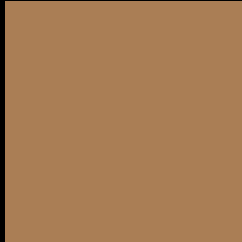
Large Text (above 18pt) WCAG AA ✓ Pass

Any Text WCAG AA × Fail

Large Text (above 18pt) WCAG AAA × Fail

Any Text WCAG AAA × Fail

Black Background



This preview shows how the HunterLab color 49.1158, 7.3684, 20.0193 looks on a black background.

Color Contrast Check

Large Text (above 18pt) WCAG AA ✓ Pass

Any Text WCAG AA ✓ Pass

Large Text (above 18pt) WCAG AAA ✓ Pass

Any Text WCAG AAA × Fail

If you want to check with other color combinations, try the [Color Contrast Checker](#).

HunterLab 49.1158, 7.3684, 20.0193 Background



This preview shows how black text looks on a background with the HunterLab color 49.1158, 7.3684, 20.0193.



This preview shows how white text looks on a background with the HunterLab color 49.1158, 7.3684,

Color Blindness Simulation

Color vision deficiency is a very complex topic, and I could not describe the different causes any better than Wikipedia does, so if you want to learn more, you should check out their [article about color blindness](#).

Dichromacy



Original Color

49.1158, 7.3684, 20.0193

Protanopia

49.2466, -4.6285, 18.8858

Deuteranopia

49.1194, 3.2731, 20.2002



Tritanopia

49.0340, 16.8526, 4.9732

Trichromacy



Original Color

49.1158, 7.3684, 20.0193

Protanomaly

49.1688, -0.6221, 19.1537

Deuteranomaly

49.1787, 4.8422, 20.2764

Tritanomaly

49.0084, 13.4148, 11.1742

Monochromacy



Original Color

49.1158, 7.3684, 20.0193

Achromatopsia

48.8260, -2.6052, 2.6528

Achromatomaly

48.6792, 0.2543, 9.8757

CSS Examples

Text

The CSS property to change the color of the text to HunterLab 49.1158, 7.3684, 20.0193 is called "color". The color property can be set on classes, ids or directly on the HTML element.

This example shows how text in the color `rgb(170, 126, 85)` looks like.

```
.text, #text, p{  
    color:rgb(170, 126, 85)  
}
```

If you want to add a text shadow in that color use the text-shadow property, you can generate a text shadow directly with our [CSS Text Shadow Generator](#).

Here you see how black text with a 4 pixel rgb(170, 126, 85) colored shadow looks like.

```
.shadow{ text-shadow: 4px 4px 2px rgb(170, 126, 85) }
```

Border

The CSS property to change the border of an element to HunterLab 49.1158, 7.3684, 20.0193 is called "border". The border property can be set on classes, ids or directly on the HTML element.

This example shows the color as border, it can be applied via the CSS property "border" or "border-color".

```
.border, #border, table{ border:4px solid rgb(170, 126, 85) }
```


If only the border color should be changed use the property `border-color`.

```
.border{ border-color:rgb(170, 126, 85) }
```

If you want to add a box shadow in that color use:

Here you see how a box with a 4 pixel `rgb(170, 126, 85)` colored shadow looks like.

```
.boxshadow{ -moz-box-shadow:4px 4px 4px  
4px rgb(170, 126, 85); -webkit-box-  
shadow:4px 4px 4px 4px rgb(170, 126, 85);  
box-shadow:4px 4px 4px 4px rgb(170, 126,  
85) }
```

Background

The CSS property to change the background color of an element to HunterLab 49.1158, 7.3684, 20.0193 is called "background". The background property can be set on classes, ids or directly on the HTML element.

```
.background, #background, body{  
background: rgb(170, 126, 85) }
```

If only the background color should be changed can be used:

```
.background{ background-color: rgb(170,  
126, 85) }
```

This example shows the color as background, it is applied via the CSS property "background".

To optimize and compress your CSS code, you can use our [online CSS compressor and optimizer](#) based on csstidy. If you want to create a linear or radial gradient as background or border, check our [CSS Gradient Generator](#).

Hey! You found this booklet interesting? Support Converting Colors with the new Membership Option!

The pro membership hides all ads, plus gives you double the colors in the color bucket, and more awesome pro features!

[Learn more, Memberships starting at \\$2.50/m!](#)

**Follow me
on Twitter!**

@ConvertingColor