

# Converting Colors

HunterLab(49.0091, 79.2838,  
10.2126)

Have a look what the booklet for  
HunterLab(49.0091, 79.2838,  
10.2126) contains.

<b>HunterLab(48.9921, 79.3965, 10.0744)</b> .....	3
<b><i>Conversions</i></b> .....	4
<b><i>Details</i></b> .....	6
<b><i>Harmonies</i></b> .....	12
<b><i>Previews</i></b> .....	24
<b><i>Color Blindness Simulation</i></b> .....	28
<b><i>CSS Examples</i></b> .....	31

# Color

**HunterLab(48.9921, 79.3965,  
10.0744)**

# Conversions

## Conversions Part 1

Format	Color
Hex	FF2678
RGB	255, 38, 120
RGB Percent	100%, 15%, 47%
CMY	0.0000, 0.8509, 0.5294
CMYK	0.00, 0.85, 0.53, 0.00
HSL	337°, 100%, 57%
HSV	337°, 85%, 100%
XYZ	45.3232, 24.0023, 20.0134
YIQ	112.2310, 103.0100, 71.5060

# Conversions

## Conversions Part 2

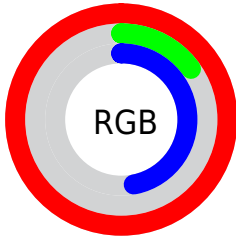
<b>Format</b>	<b>Color</b>
<b>R<sub>YB</sub></b>	255, 38, 120
Decimal	16721528
CIE <sub>Lab</sub>	56.09, 79.89, 10.58
CIE <sub>LCh</sub>	56, 80.589, 7.544
Yxy	24.0037, 0.5073, 0.2687
Android (android.graphics.Color)	4294911608 (0xFFFF2678)
YUV	112.2310, 3.8301, 125.2084
Hunter-Lab	48.9921, 79.3965, 10.0744

# Details

The HunterLab color **48.9921, 79.3965, 10.0744** is a dark color, and the websafe version is hex **FF0066**. The color can be described as middle washed rose. A complement of this color would be **86.5738, -60.5672, 25.2026**, and the grayscale version is **40.3041, -2.1505, 2.1898**.

A 20% lighter version of the original color is **59.6720, 58.2165, -0.9911**, and **33.9768, 59.5634, 11.2806** is the 20% darker color. If you saturate the color by 10%, you get **47.4741, 81.9188, 14.2863**, and if you desaturate by 10%, it is **51.6206, 73.8488, 6.4054**.

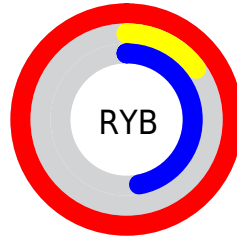
# Distribution



Red (100%)

Green (15%)

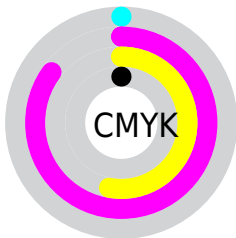
Blue (47%)



Red (100%)

Yellow (15%)

Blue (47%)

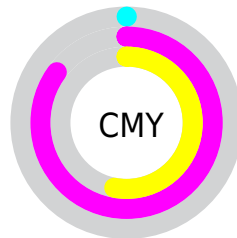


Cyan (0%)

Magenta (85%)

Yellow (53%)

Black (0%)



Cyan (0%)

Magenta (85%)

Yellow (53%)

# Brightness & Saturation Gradients

These gradients show how the HunterLab color 48.9921, 79.3965, 10.0744 changes by changing the brightness by 10 percent. The first figure shows a shift by +10% for each color and the second figure -10%.

Similar to the brightness gradients but the following saturation gradients show a change of the HunterLab color 48.9921, 79.3965, 10.0744 by changing the saturation by 10% instead.



48.9921, 79.3965,  
10.0744

48.9921, 79.3965,  
10.0744

165.1784, 98.7237,  
20.6494

39.1617, 76.9364,  
8.9110

70.7363, 84.2459,  
12.3843

30.0928, 74.5818,  
7.7267

82.5652, 86.5742,  
13.5397

21.8577, 72.5595,  
6.5053

94.9887, 88.8180,  
14.7005

14.5512, 71.4598,  
5.2161

107.9794, 90.9734,  
15.8691

8.2120, 74.3806,  
5.7484

121.5137, 93.0399,  
17.0472

0.0000, INF, NaN

0.0000, INF, NaN

135.5705, 95.0187,

18.2361

0.0000, NaN, NaN

150.1310, 96.9124,  
19.4365

0.0000, NaN, NaN

■ 48.9921, 79.3965,  
10.0744

■ 48.9921, 79.3965,  
10.0744

■ 47.4741, 81.9188,  
14.2863

■ 51.6206, 73.8488,  
6.4054

■ 47.0221, 82.3362,  
16.3581

■ 55.3775, 65.7373,  
3.5930

■ 60.1872, 55.8508,  
1.7648

■ 65.9250, 44.9681,  
0.8914

■ 72.4555, 33.6718,  
0.8576

79.6541, 22.3256,  
1.5221

87.4145, 11.1238,  
2.7515

95.6496, 0.1513,  
4.4333

99.9999, -5.3359,  
5.4331

# Harmonies

## Analogous

The Analogous color harmony consists of three colors that are next to each other on the color wheel.



48.9936, 72.6210, -27.1327



48.9921, 79.3965, 10.0744



48.9936, 59.9277, 27.2947

# Triad

The Triadic color harmony groups three colors that are evenly spaced from another and form a triangle on the color wheel.



48.9936, 79.3913, 10.0757



48.9936, -36.1259, 30.6666



48.9936, -24.9535, -95.0613

# Complementary

The Complementary color scheme is a pair of colors which are on the opposite of each other on the color wheel.



48.9921, 79.3965, 10.0744



86.5738, -60.5672, 25.2026

# Split Complementary

Split-complementary colors differ from the complementary color scheme. The scheme consists of three colors, the original color and two neighbors of the complement color.



48.9936, -44.0727, -51.5842



48.9921, 79.3965, 10.0744



48.9936, -49.2041, 20.8268

# Square

The Square scheme is like the rectangle color scheme, but the four colors are evenly spaced on the color wheel.



48.9936, 79.3913, 10.0757



48.9936, -10.8216, 32.8534



48.9936, -51.6583, -6.1170



48.9936, 6.1662, -105.9202



# Rectangle

The Rectangle color scheme consists of four colors that form a rectangle on the color wheel.



48.9921, 79.3965, 10.0744



48.9936, 37.1440, 31.3571



48.9936, -51.6583, -6.1170



48.9936, -32.7169, -82.8239

# Sweetspot

The Sweet Spot groups the original color and five complimentary colors.



48.9936, 79.3913, 10.0757



78.9737, 23.3554, 1.4363



41.6636, 80.1187, -107.5567



35.3600, 12.6211, 0.5341

0.0000, NaN, NaN



46.2646, -2.4686, 2.5136



# Same Dimension

The Same Dimension uses a secret algorithm to generate beautiful new colors.



48.9936, 79.3913, 10.0757



47.0222, 82.3364, 16.3582



49.9925, 67.4255, 29.8084



42.5448, 2.2973, 1.6845



34.0295, 59.6613, 11.2545



10.7142, 18.9672, 2.1261



# Inverse Universe

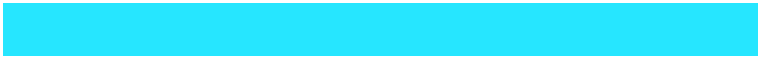
The Inverse Universe completely reimagines the original color for something new.



48.9936, 79.3913, 10.0757



47.0222, 82.3364, 16.3582



80.0320, -35.0966, -21.3868



42.5448, 2.2973, 1.6845



34.0295, 59.6613, 11.2545



10.7142, 18.9672, 2.1261



# Previews

## White Background



This preview shows how the HunterLab color 48.9921, 79.3965, 10.0744 looks on a white background.

## Color Contrast Check

Large Text (above 18pt) WCAG AA ✓ Pass

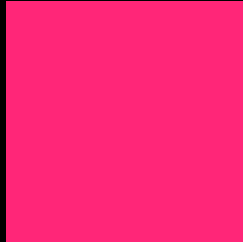
Any Text WCAG AA × Fail

Large Text (above 18pt) WCAG AAA × Fail

Any Text WCAG AAA × Fail



# Black Background



This preview shows how the HunterLab color 48.9921, 79.3965, 10.0744 looks on a black background.

## Color Contrast Check

Large Text (above 18pt) WCAG AA ✓ Pass

Any Text WCAG AA ✓ Pass

Large Text (above 18pt) WCAG AAA ✓ Pass

Any Text WCAG AAA × Fail

If you want to check with other color combinations, try the [Color Contrast Checker](#).

## HunterLab 48.9921, 79.3965, 10.0744 Background



This preview shows how black text looks on a background with the HunterLab color 48.9921, 79.3965, 10.0744.



This preview shows how white text looks on a background with the HunterLab color 48.9921, 79.3965, 10.0744.



# Color Blindness Simulation

Color vision deficiency is a very complex topic, and I could not describe the different causes any better than Wikipedia does, so if you want to learn more, you should check out their [article about color blindness](#).

## Dichromacy



### Original Color

48.9921, 79.3965, 10.0744

### Protanopia

49.3856, 1.5695, -14.0168

### Deuteranopia

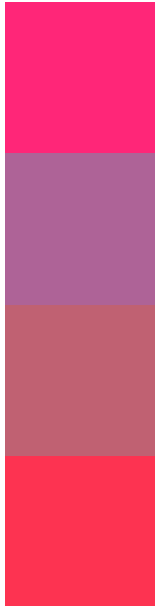
49.1518, 2.9857, 12.5447



## Tritanopia

49.0279, 68.7430, 26.4105

# Trichromacy



## Original Color

48.9921, 79.3965, 10.0744

## Protanomaly

44.8962, 30.7802, -10.4610

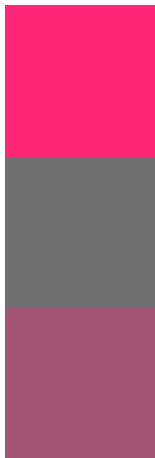
## Deuteranomaly

45.7938, 33.0956, 8.1860

## Tritanomaly

48.8307, 72.3794, 21.9044

# Monochromacy



## Original Color

48.9921, 79.3965, 10.0744

## Achromatopsia

40.2529, -2.1478, 2.1870

## Achromatomaly

39.5314, 28.5913, 0.5330

# CSS Examples

## Text

The CSS property to change the color of the text to HunterLab 48.9921, 79.3965, 10.0744 is called "color". The color property can be set on classes, ids or directly on the HTML element.

This example shows how text in the color `rgb(255, 38, 120)` looks like.

```
.text, #text, p{  
    color:rgb(255, 38, 120)  
}
```

If you want to add a text shadow in that color use the text-shadow property, you can generate a text shadow directly with our [CSS Text Shadow Generator](#).

Here you see how black text with a 4 pixel rgb(255, 38, 120) colored shadow looks like.

```
.shadow{ text-shadow: 4px 4px 2px rgb(255, 38, 120) }
```

## Border

The CSS property to change the border of an element to HunterLab 48.9921, 79.3965, 10.0744 is called "border". The border property can be set on classes, ids or directly on the HTML element.

This example shows the color as border, it can be applied via the CSS property "border" or "border-color".

```
.border, #border, table{ border:4px solid rgb(255, 38, 120) }
```



If only the border color should be changed use the property border-color.

```
.border{ border-color:rgb(255, 38, 120) }
```

If you want to add a box shadow in that color use:

Here you see how a box with a 4 pixel rgb(255, 38, 120) colored shadow looks like.

```
.boxshadow{ -moz-box-shadow:4px 4px 4px  
4px rgb(255, 38, 120); -webkit-box-  
shadow:4px 4px 4px 4px rgb(255, 38, 120);  
box-shadow:4px 4px 4px 4px rgb(255, 38,  
120) }
```

# Background

The CSS property to change the background color of an element to HunterLab 48.9921, 79.3965, 10.0744 is called "background". The background property can be set on classes, ids or directly on the HTML element.

```
.background, #background, body{  
background: rgb(255, 38, 120) }
```

If only the background color should be changed can be used:

```
.background{ background-color: rgb(255, 38,  
120) }
```

This example shows the color as background, it is applied via the CSS property "background".

To optimize and compress your CSS code, you can use our [online CSS compressor and optimizer](#) based on csstidy. If you want to create a linear or radial gradient as background or border, check our [CSS Gradient Generator](#).

Hey! You found this booklet interesting? Support Converting Colors with the new Membership Option!

The pro membership hides all ads, plus gives you double the colors in the color bucket, and more awesome pro features!

**[Learn more, Memberships starting at \\$2.50/m!](#)**

**Follow me  
on Twitter!**

@ConvertingColor