

Converting Colors

HunterLab(49.0115, 76.4530,
16.3084)

Have a look what the booklet for
HunterLab(49.0115, 76.4530,
16.3084) contains.

HunterLab(49.0109, 76.4439, 16.3318)	3
<i>Conversions</i>	4
<i>Details</i>	6
<i>Harmonies</i>	12
<i>Previews</i>	24
<i>Color Blindness Simulation</i>	28
<i>CSS Examples</i>	31

Color

**HunterLab(49.0109, 76.4439,
16.3318)**

Conversions

Conversions Part 1

Format	Color
Hex	FF2C66
RGB	255, 44, 102
RGB Percent	100%, 17%, 40%
CMY	0.0000, 0.8274, 0.6000
CMYK	0.00, 0.83, 0.60, 0.00
HSL	344°, 100%, 59%
HSV	344°, 83%, 100%
XYZ	44.5390, 24.0207, 14.8594
YIQ	113.7010, 107.1380, 62.7700

Conversions

Conversions Part 2

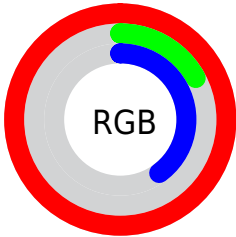
Format	Color
R_{YB}	255, 44, 102
Decimal	16723046
CIE _{Lab}	56.11, 77.55, 21.36
CIE _{LCh}	56, 80.433, 15.398
Yxy	24.0221, 0.5339, 0.2880
Android (android.graphics.Color)	4294913126 (0xFFFF2C66)
YUV	113.7010, -5.7686, 123.9192
Hunter-Lab	49.0109, 76.4439, 16.3318

Details

The HunterLab color **49.0109, 76.4439, 16.3318** is a dark color, and the websafe version is hex **FF3366**. The color can be described as dark washed rose. A complement of this color would be **87.2283, -56.7168, 16.8440**, and the grayscale version is **40.9023, -2.1824, 2.2223**.

A 20% lighter version of the original color is **59.4728, 54.6798, 7.5598**, and **33.7074, 58.5720, 15.2148** is the 20% darker color. If you saturate the color by 10%, you get **47.2673, 79.8395, 20.1290**, and if you desaturate by 10%, it is **51.9120, 70.1459, 12.7417**.

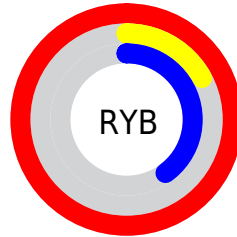
Distribution



Red (100%)

Green (17%)

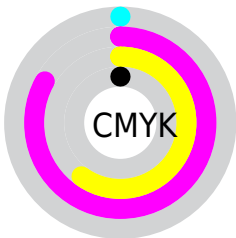
Blue (40%)



Red (100%)

Yellow (17%)

Blue (40%)

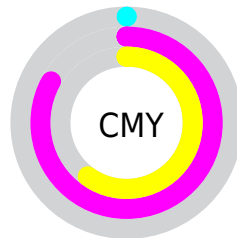


Cyan (0%)

Magenta (83%)

Yellow (60%)

Black (0%)



Cyan (0%)

Magenta (83%)

Yellow (60%)

Brightness & Saturation Gradients

These gradients show how the HunterLab color 49.0109, 76.4439, 16.3318 changes by changing the brightness by 10 percent. The first figure shows a shift by +10% for each color and the second figure -10%.

Similar to the brightness gradients but the following saturation gradients show a change of the HunterLab color 49.0109, 76.4439, 16.3318 by changing the saturation by 10% instead.

■ 49.0109, 76.4439,
16.3318

■ 49.0109, 76.4439,
16.3318

165.2066, 95.2321,
31.6202

■ 39.1791, 74.0148,
14.4481

■ 70.7575, 81.1949,
19.9130

■ 30.1088, 71.6670,
12.4663

■ 82.5876, 83.4648,
21.6401

■ 21.8721, 69.6052,
10.3450

■ 95.0122, 85.6472,
23.3393

■ 14.5637, 68.3682,
8.3676

■ 108.0039, 87.7395,
25.0179

■ 8.2244, 70.8283,
5.7571

■ 121.5392, 89.7418,
26.6813

0.0000, INF, NaN

0.0000, INF, NaN

135.5969, 91.6562,

28.3340

0.0000, NaN, NaN

150.1583, 93.4852,
29.9794

0.0000, NaN, NaN

■ 49.0109, 76.4439,
16.3318

■ 49.0109, 76.4439,
16.3318

■ 47.2673, 79.8395,
20.1290

■ 51.9120, 70.1459,
12.7417

■ 46.5865, 80.7321,
22.7291

■ 55.9569, 61.5510,
9.6830

■ 61.0484, 51.4823,
7.3317

■ 67.0503, 40.6765,
5.7218

■ 73.8232, 29.6458,
4.7987

81.2425, 18.6883,
4.4700

89.2043, 7.9492,
4.6379

97.6245, -2.5190,
5.2143

99.9999, -5.3359,
5.4331

Harmonies

Analogous

The Analogous color harmony consists of three colors that are next to each other on the color wheel.



49.0124, 76.8013, -15.4756



49.0109, 76.4439, 16.3318



49.0124, 51.4465, 29.3436

Triad

The Triadic color harmony groups three colors that are evenly spaced from another and form a triangle on the color wheel.



49.0124, 76.4386, 16.3329



49.0124, -40.6324, 29.1660



49.0124, -17.8535, -101.7248

Complementary

The Complementary color scheme is a pair of colors which are on the opposite of each other on the color wheel.



49.0109, 76.4439, 16.3318



87.2283, -56.7168, 16.8440

Split Complementary

Split-complementary colors differ from the complementary color scheme. The scheme consists of three colors, the original color and two neighbors of the complement color.



49.0124, -40.2090, -64.2881



49.0109, 76.4439, 16.3318



49.0124, -50.7498, 15.7616

Square

The Square scheme is like the rectangle color scheme, but the four colors are evenly spaced on the color wheel.



49.0124, 76.4386, 16.3329



49.0124, -18.6079, 32.6229



49.0124, -50.6192, -16.5991



49.0124, 15.7278, -101.1416

Rectangle

The Rectangle color scheme consists of four colors that form a rectangle on the color wheel.



49.0109, 76.4439, 16.3318



49.0124, 27.2563, 32.0993



49.0124, -50.6192, -16.5991



49.0124, -26.7014, -92.4490

Sweetspot

The Sweet Spot groups the original color and five complimentary colors.



49.0124, 76.4386, 16.3329



79.5127, 21.1524, 4.4975



45.4473, 83.5204, -93.9568



35.5703, 11.5652, 2.1250

0.0000, NaN, NaN



46.2646, -2.4686, 2.5136

Same Dimension

The Same Dimension uses a secret algorithm to generate beautiful new colors.



49.0124, 76.4386, 16.3329



46.6715, 80.6219, 22.3977



53.5810, 57.2407, 31.3794



42.5078, 2.0981, 2.2130



33.7073, 58.4753, 15.9628



10.6007, 18.5512, 3.7702

Inverse Universe

The Inverse Universe completely reimagines the original color for something new.



49.0124, 76.4386, 16.3329



46.6715, 80.6219, 22.3977



73.1423, -25.5965, -32.0679



42.5078, 2.0981, 2.2130



33.7073, 58.4753, 15.9628



10.6007, 18.5512, 3.7702

Previews

White Background



This preview shows how the HunterLab color 49.0109, 76.4439, 16.3318 looks on a white background.

Color Contrast Check

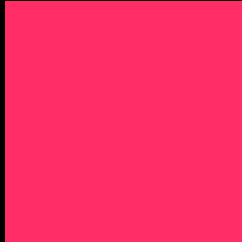
Large Text (above 18pt) WCAG AA ✓ Pass

Any Text WCAG AA × Fail

Large Text (above 18pt) WCAG AAA × Fail

Any Text WCAG AAA × Fail

Black Background



This preview shows how the HunterLab color 49.0109, 76.4439, 16.3318 looks on a black background.

Color Contrast Check

Large Text (above 18pt) WCAG AA ✓ Pass

Any Text WCAG AA ✓ Pass

Large Text (above 18pt) WCAG AAA ✓ Pass

Any Text WCAG AAA × Fail

If you want to check with other color combinations, try the [Color Contrast Checker](#).

HunterLab 49.0109, 76.4439, 16.3318 Background



This preview shows how black text looks on a background with the HunterLab color 49.0109, 76.4439, 16.3318.



This preview shows how white text looks on a background with the HunterLab color 49.0109, 76.4439,

Color Blindness Simulation

Color vision deficiency is a very complex topic, and I could not describe the different causes any better than Wikipedia does, so if you want to learn more, you should check out their [article about color blindness](#).

Dichromacy



Original Color

49.0109, 76.4439, 16.3318

Protanopia

49.1468, -1.0214, -0.6067

Deuteranopia

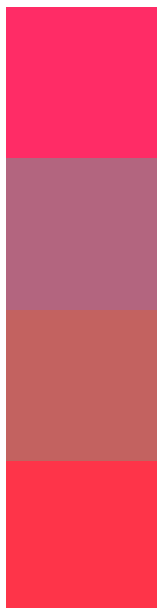
49.0411, 3.2804, 18.0351



Tritanopia

48.9963, 69.6749, 26.7270

Trichromacy



Original Color

49.0109, 76.4439, 16.3318

Protanomaly

45.1922, 27.8537, 1.9926

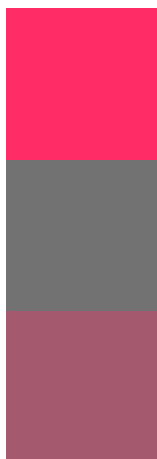
Deuteranomaly

46.0239, 31.8729, 14.6616

Tritanomaly

48.9978, 72.0099, 23.8255

Monochromacy



Original Color

49.0109, 76.4439, 16.3318

Achromatopsia

41.0207, -2.1888, 2.2287

Achromatomaly

40.3359, 26.3442, 3.6322

CSS Examples

Text

The CSS property to change the color of the text to HunterLab 49.0109, 76.4439, 16.3318 is called "color". The color property can be set on classes, ids or directly on the HTML element.

This example shows how text in the color `rgb(255, 44, 102)` looks like.

```
.text, #text, p{  
    color:rgb(255, 44, 102)  
}
```

If you want to add a text shadow in that color use the text-shadow property, you can generate a text shadow directly with our [CSS Text Shadow Generator](#).

Here you see how black text with a 4 pixel rgb(255, 44, 102) colored shadow looks like.

```
.shadow{ text-shadow: 4px 4px 2px rgb(255, 44, 102) }
```

Border

The CSS property to change the border of an element to HunterLab 49.0109, 76.4439, 16.3318 is called "border". The border property can be set on classes, ids or directly on the HTML element.

This example shows the color as border, it can be applied via the CSS property "border" or "border-color".

```
.border, #border, table{ border:4px solid rgb(255, 44, 102) }
```


If only the border color should be changed use the property border-color.

```
.border{ border-color:rgb(255, 44, 102) }
```

If you want to add a box shadow in that color use:

Here you see how a box with a 4 pixel rgb(255, 44, 102) colored shadow looks like.

```
.boxshadow{ -moz-box-shadow:4px 4px 4px  
4px rgb(255, 44, 102); -webkit-box-  
shadow:4px 4px 4px 4px rgb(255, 44, 102);  
box-shadow:4px 4px 4px 4px rgb(255, 44,  
102) }
```

Background

The CSS property to change the background color of an element to HunterLab 49.0109, 76.4439, 16.3318 is called "background". The background property can be set on classes, ids or directly on the HTML element.

```
.background, #background, body{  
background: rgb(255, 44, 102) }
```

If only the background color should be changed can be used:

```
.background{ background-color: rgb(255, 44,  
102) }
```

This example shows the color as background, it is applied via the CSS property "background".

To optimize and compress your CSS code, you can use our [online CSS compressor and optimizer](#) based on csstidy. If you want to create a linear or radial gradient as background or border, check our [CSS Gradient Generator](#).

Hey! You found this booklet interesting? Support Converting Colors with the new Membership Option!

The pro membership hides all ads, plus gives you double the colors in the color bucket, and more awesome pro features!

[Learn more, Memberships starting at \\$2.50/m!](#)

**Follow me
on Twitter!**

@ConvertingColor