

Converting Colors

HunterLab(49.0310, 49.0250,
4.6754)

Have a look what the booklet for
HunterLab(49.0310, 49.0250,
4.6754) contains.

HunterLab(49.0289, 49.0310, 4.6713)	3
<i>Conversions</i>	4
<i>Details</i>	6
<i>Harmonies</i>	12
<i>Previews</i>	24
<i>Color Blindness Simulation</i>	28
<i>CSS Examples</i>	31

Color

**HunterLab(49.0289, 49.0310,
4.6713)**

Conversions

Conversions Part 1

Format	Color
Hex	DB5A84
RGB	219, 90, 132
RGB Percent	86%, 35%, 52%
CMY	0.1412, 0.6470, 0.4824
CMYK	0.00, 0.59, 0.40, 0.14
HSL	340°, 64%, 61%
HSV	340°, 59%, 86%
XYZ	37.0344, 24.0383, 24.5177
YIQ	133.3590, 63.4020, 40.4100

Conversions

Conversions Part 2

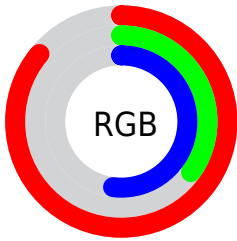
Format	Color
R_{YB}	219, 90, 132
Decimal	14375556
CIE _{Lab}	56.13, 54.30, 2.68
CIE _{LCh}	56, 54.370, 2.827
Yxy	24.0396, 0.4327, 0.2809
Android (android.graphics.Color)	4292565636 (0xFFDB5A84)
YUV	133.3590, -0.6700, 75.1072
Hunter-Lab	49.0289, 49.0310, 4.6713

Details

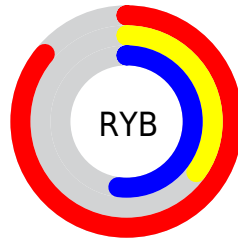
The HunterLab color **49.0289, 49.0310, 4.6713** is a dark color, and the websafe version is hex **FF6699**. The color can be described as middle muted rose. A complement of this color would be **74.8409, -41.5673, 12.4340**, and the grayscale version is **48.5587, -2.5910, 2.6383**.

A 20% lighter version of the original color is **67.0922, 42.5454, 1.5254**, and **30.1299, 45.3120, 3.2553** is the 20% darker color. If you saturate the color by 10%, you get **45.2737, 56.8388, 6.7596**, and if you desaturate by 10%, it is **53.5979, 40.2365, 3.3000**.

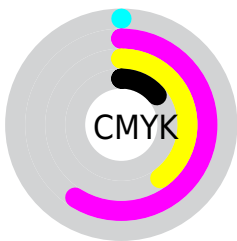
Distribution



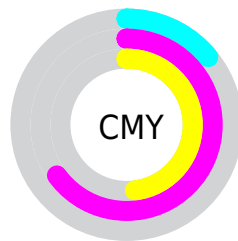
- Red (86%)
- Green (35%)
- Blue (52%)



- Red (86%)
- Yellow (35%)
- Blue (52%)



- Cyan (0%)
- Magenta (59%)
- Yellow (40%)
- Black (14%)



- Cyan (14%)
- Magenta (65%)
- Yellow (48%)

Brightness & Saturation Gradients

These gradients show how the HunterLab color 49.0289, 49.0310, 4.6713 changes by changing the brightness by 10 percent. The first figure shows a shift by +10% for each color and the second figure -10%.

Similar to the brightness gradients but the following saturation gradients show a change of the HunterLab color 49.0289, 49.0310, 4.6713 by changing the saturation by 10% instead.

49.0289, 49.0310,
4.6713

49.0289, 49.0310,
4.6713

165.2334, 61.7364,
12.0344

39.1957, 47.1196,
3.9866

70.7777, 52.5269,
6.1277

30.1240, 45.1249,
3.3289

82.6088, 54.1175,
6.8960

21.8857, 43.0995,
2.6990

95.0344, 55.6075,
7.6905

14.5756, 41.2123,
2.0948

108.0271, 57.0025,
8.5106

8.2362, 40.8503,
1.7978

121.5633, 58.3078,
9.3557

0.0000, INF, NaN

0.0000, NaN, NaN

135.6219, 59.5287,

10.2250

0.0000, NaN, NaN

150.1842, 60.6701,
11.1181

0.0000, NaN, NaN

■ 49.0289, 49.0310,
4.6713

■ 49.0289, 49.0310,
4.6713

■ 45.2737, 56.8388,
6.7596

■ 53.5979, 40.2365,
3.3000

■ 42.4249, 63.0013,
9.5101

■ 58.8638, 30.9998,
2.5992

■ 40.5284, 66.9084,
12.7369

■ 64.7193, 21.6663,
2.4820

■ 39.4871, 68.4981,
16.0877

■ 71.0704, 12.4303,
2.8511

■ 39.3939, 68.6276,
16.4290

■ 77.8395, 3.3816,
3.6174

■ 84.9640, -5.4512,
4.7064

■ 92.3939, -14.0723,
6.0580

■ 96.6915, -17.3620,
3.7357

■ 96.8504, -16.4722,
1.4733

Harmonies

Analogous

The Analogous color harmony consists of three colors that are next to each other on the color wheel.



49.0302, 42.5606, -20.3281



49.0289, 49.0310, 4.6713



49.0302, 39.7079, 20.2619

Triad

The Triadic color harmony groups three colors that are evenly spaced from another and form a triangle on the color wheel.



49.0302, 49.0276, 4.6725



49.0302, -24.1053, 26.3078



49.0302, -21.0000, -50.4928

Complementary

The Complementary color scheme is a pair of colors which are on the opposite of each other on the color wheel.



49.0289, 49.0310, 4.6713



74.8409, -41.5673, 12.4340

Split Complementary

Split-complementary colors differ from the complementary color scheme. The scheme consists of three colors, the original color and two neighbors of the complement color.



49.0302, -34.1666, -25.5925



49.0289, 49.0310, 4.6713



49.0302, -35.7171, 18.0947

Square

The Square scheme is like the rectangle color scheme, but the four colors are evenly spaced on the color wheel.



49.0302, 49.0276, 4.6725



49.0302, -4.7526, 28.6629



49.0302, -39.0376, 0.5769



49.0302, -0.4478, -59.5389

Rectangle

The Rectangle color scheme consists of four colors that form a rectangle on the color wheel.



49.0289, 49.0310, 4.6713



49.0302, 26.6357, 25.5632



49.0302, -39.0376, 0.5769



49.0302, -26.3003, -43.2740

Sweetspot

The Sweet Spot groups the original color and five complimentary colors.



49.0302, 49.0276, 4.6725



85.0260, 13.9580, 3.4404



46.5386, 50.3000, -55.8228



38.2816, 7.9361, 1.5026

0.0000, NaN, NaN



46.2646, -2.4686, 2.5136

Same Dimension

The Same Dimension uses a secret algorithm to generate beautiful new colors.



49.0302, 49.0276, 4.6725



52.7649, 69.7429, 8.8446



52.2284, 34.3676, 21.8020



36.2230, 1.8042, 1.6683



30.3642, 52.9545, 12.2187



7.8285, 13.8449, 1.6597

Inverse Universe

The Inverse Universe completely reimagines the original color for something new.



49.0302, 49.0276, 4.6725



52.7649, 69.7429, 8.8446



68.8832, -24.4494, -15.6668



36.2230, 1.8042, 1.6683



30.3642, 52.9545, 12.2187



7.8285, 13.8449, 1.6597

Previews

White Background



This preview shows how the HunterLab color 49.0289, 49.0310, 4.6713 looks on a white background.

Color Contrast Check

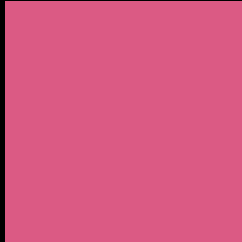
Large Text (above 18pt) WCAG AA ✓ Pass

Any Text WCAG AA × Fail

Large Text (above 18pt) WCAG AAA × Fail

Any Text WCAG AAA × Fail

Black Background



This preview shows how the HunterLab color 49.0289, 49.0310, 4.6713 looks on a black background.

Color Contrast Check

Large Text (above 18pt) WCAG AA ✓ Pass

Any Text WCAG AA ✓ Pass

Large Text (above 18pt) WCAG AAA ✓ Pass

Any Text WCAG AAA × Fail

If you want to check with other color combinations, try the [Color Contrast Checker](#).

HunterLab 49.0289, 49.0310, 4.6713 Background



This preview shows how black text looks on a background with the HunterLab color 49.0289, 49.0310, 4.6713.



This preview shows how white text looks on a background with the HunterLab color 49.0289, 49.0310,

4.6713.

Color Blindness Simulation

Color vision deficiency is a very complex topic, and I could not describe the different causes any better than Wikipedia does, so if you want to learn more, you should check out their [article about color blindness](#).

Dichromacy



Original Color

49.0289, 49.0310, 4.6713

Protanopia

49.2592, 0.4120, -8.5744

Deuteranopia

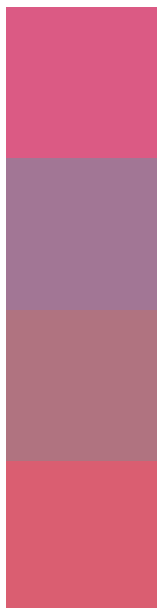
49.0417, 3.3911, 6.4152



Tritanopia

49.0681, 42.1685, 15.7847

Trichromacy



Original Color

49.0289, 49.0310, 4.6713

Protanomaly

47.7579, 16.6046, -5.5808

Deuteranomaly

48.0105, 19.8292, 4.7110

Tritanomaly

49.0949, 44.5980, 12.1658

Monochromacy



Original Color

49.0289, 49.0310, 4.6713

Achromatopsia

48.4304, -2.5841, 2.6313

Achromatomaly

47.2319, 15.2440, 1.5156

CSS Examples

Text

The CSS property to change the color of the text to HunterLab 49.0289, 49.0310, 4.6713 is called "color". The color property can be set on classes, ids or directly on the HTML element.

This example shows how text in the color `rgb(219, 90, 132)` looks like.

```
.text, #text, p{  
  color:rgb(219, 90, 132)  
}
```

If you want to add a text shadow in that color use the text-shadow property, you can generate a text shadow directly with our [CSS Text Shadow Generator](#).

Here you see how black text with a 4 pixel rgb(219, 90, 132) colored shadow looks like.

```
.shadow{ text-shadow: 4px 4px 2px rgb(219, 90, 132) }
```

Border

The CSS property to change the border of an element to HunterLab 49.0289, 49.0310, 4.6713 is called "border". The border property can be set on classes, ids or directly on the HTML element.

This example shows the color as border, it can be applied via the CSS property "border" or "border-color".

```
.border, #border, table{ border:4px solid rgb(219, 90, 132) }
```


If only the border color should be changed use the property `border-color`.

```
.border{ border-color:rgb(219, 90, 132) }
```

If you want to add a box shadow in that color use:

Here you see how a box with a 4 pixel `rgb(219, 90, 132)` colored shadow looks like.

```
.boxshadow{ -moz-box-shadow:4px 4px 4px  
4px rgb(219, 90, 132); -webkit-box-  
shadow:4px 4px 4px 4px rgb(219, 90, 132);  
box-shadow:4px 4px 4px 4px rgb(219, 90,  
132) }
```

Background

The CSS property to change the background color of an element to HunterLab 49.0289, 49.0310, 4.6713 is called "background". The background property can be set on classes, ids or directly on the HTML element.

```
.background, #background, body{  
background: rgb(219, 90, 132) }
```

If only the background color should be changed can be used:

```
.background{ background-color: rgb(219, 90,  
132) }
```

This example shows the color as background, it is applied via the CSS property "background".

To optimize and compress your CSS code, you can use our [online CSS compressor and optimizer](#) based on csstidy. If you want to create a linear or radial gradient as background or border, check our [CSS Gradient Generator](#).

Hey! You found this booklet interesting? Support Converting Colors with the new Membership Option!

The pro membership hides all ads, plus gives you double the colors in the color bucket, and more awesome pro features!

[Learn more, Memberships starting at \\$2.50/m!](#)

**Follow me
on Twitter!**

@ConvertingColor