

Converting Colors

HunterLab(49.0635, 79.5510,
9.2988)

Have a look what the booklet for
HunterLab(49.0635, 79.5510,
9.2988) contains.

HunterLab(49.0422, 79.5869, 9.3531)	3
<i>Conversions</i>	4
<i>Details</i>	6
<i>Harmonies</i>	12
<i>Previews</i>	24
<i>Color Blindness Simulation</i>	28
<i>CSS Examples</i>	31

Color

**HunterLab(49.0422, 79.5869,
9.3531)**

Conversions

Conversions Part 1

Format	Color
Hex	FF267A
RGB	255, 38, 122
RGB Percent	100%, 15%, 48%
CMY	0.0000, 0.8509, 0.5216
CMYK	0.00, 0.85, 0.52, 0.00
HSL	337°, 100%, 57%
HSV	337°, 85%, 100%
XYZ	45.4460, 24.0514, 20.6595
YIQ	112.4590, 102.3680, 72.1280

Conversions

Conversions Part 2

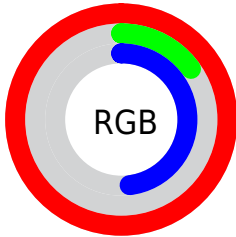
Format	Color
R_{YB}	255, 38, 122
Decimal	16721530
CIE Lab	56.14, 80.03, 9.45
CIE LCh	56, 80.588, 6.737
Yxy	24.0528, 0.5041, 0.2668
Android (android.graphics.Color)	4294911610 (0xFFFF267A)
YUV	112.4590, 4.7037, 125.0085
Hunter-Lab	49.0422, 79.5869, 9.3531

Details

The HunterLab color **49.0422, 79.5869, 9.3531** is a dark color, and the websafe version is hex **FF0066**. The color can be described as middle washed rose. A complement of this color would be **86.5294, -60.8393, 25.8467**, and the grayscale version is **40.3885, -2.1550, 2.1944**.

A 20% lighter version of the original color is **59.7368, 58.5049, -1.9111**, and **34.0158, 59.7066, 10.7135** is the 20% darker color. If you saturate the color by 10%, you get **47.5227, 82.0983, 13.5824**, and if you desaturate by 10%, it is **51.6696, 74.0442, 5.7043**.

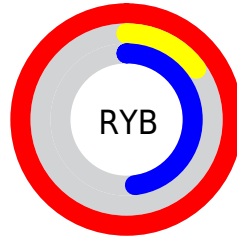
Distribution



Red (100%)

Green (15%)

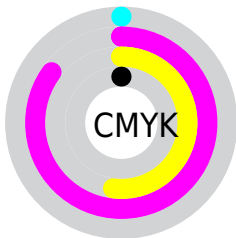
Blue (48%)



Red (100%)

Yellow (15%)

Blue (48%)

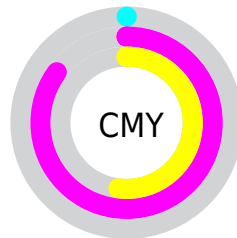


Cyan (0%)

Magenta (85%)

Yellow (52%)

Black (0%)



Cyan (0%)

Magenta (85%)

Yellow (52%)

Brightness & Saturation Gradients

These gradients show how the HunterLab color 49.0422, 79.5869, 9.3531 changes by changing the brightness by 10 percent. The first figure shows a shift by +10% for each color and the second figure -10%.

Similar to the brightness gradients but the following saturation gradients show a change of the HunterLab color 49.0422, 79.5869, 9.3531 by changing the saturation by 10% instead.

■ 49.0422, 79.5869,
9.3531

■ 49.0422, 79.5869,
9.3531

165.2535, 98.9425,
19.4570

■ 39.2082, 77.1249,
8.2610

■ 70.7929, 84.4416,
11.5368

■ 30.1354, 74.7692,
7.1554

■ 82.6249, 86.7728,
12.6353

■ 21.8960, 72.7468,
6.0230

■ 95.0512, 89.0198,
13.7423

■ 14.5846, 71.6483,
4.8375

■ 108.0446, 91.1785,
14.8599

■ 8.2450, 74.5016,
5.2019

■ 121.5815, 93.2484,
15.9893

0.0000, INF, NaN

0.0000, INF, NaN

135.6408, 95.2307,

17.1315

0.0000, NaN, NaN

150.2038, 97.1277,
18.2873

0.0000, NaN, NaN

■ 49.0422, 79.5869,
9.3531

■ 49.0422, 79.5869,
9.3531

■ 47.5227, 82.0983,
13.5824

■ 51.6696, 74.0442,
5.7043

■ 47.0690, 82.5085,
15.6755

■ 55.4230, 65.9298,
2.9446

■ 60.2275, 56.0313,
1.1931

■ 65.9587, 45.1279,
0.4121

■ 72.4822, 33.8035,
0.4798

■ 79.6733, 22.4238,
1.2505

■ 87.4260, 11.1846,
2.5880

■ 95.6536, 0.1722,
4.3782

■ 100.0000, -5.3359,
5.4331

Harmonies

Analogous

The Analogous color harmony consists of three colors that are next to each other on the color wheel.



49.0437, 72.0889, -28.3863



49.0422, 79.5869, 9.3531



49.0437, 60.7384, 27.0572

Triad

The Triadic color harmony groups three colors that are evenly spaced from another and form a triangle on the color wheel.



49.0437, 79.5817, 9.3544



49.0437, -35.6269, 30.8123



49.0437, -25.6441, -94.1999

Complementary

The Complementary color scheme is a pair of colors which are on the opposite of each other on the color wheel.



49.0422, 79.5869, 9.3531



86.5294, -60.8393, 25.8467

Split Complementary

Split-complementary colors differ from the complementary color scheme. The scheme consists of three colors, the original color and two neighbors of the complement color.



49.0437, -44.4418, -50.2498



49.0422, 79.5869, 9.3531



49.0437, -49.0256, 21.2861

Square

The Square scheme is like the rectangle color scheme, but the four colors are evenly spaced on the color wheel.



49.0437, 79.5817, 9.3544



49.0437, -9.9806, 32.8954



49.0437, -51.7492, -5.1128



49.0437, 5.2031, -106.2060

Rectangle

The Rectangle color scheme consists of four colors that form a rectangle on the color wheel.



49.0422, 79.5869, 9.3531



49.0437, 38.1465, 31.2842



49.0437, -51.7492, -5.1128



49.0437, -33.2977, -81.7019

Sweetspot

The Sweet Spot groups the original color and five complimentary colors.



49.0437, 79.5817, 9.3544



78.9935, 23.4568, 1.1549



41.1771, 79.3891, -109.4603



35.3703, 12.6736, 0.3868

0.0000, NaN, NaN



46.2646, -2.4686, 2.5136

Same Dimension

The Same Dimension uses a secret algorithm to generate beautiful new colors.



49.0437, 79.5817, 9.3544



47.0691, 82.5087, 15.6756



49.6010, 68.6319, 29.5711



42.5482, 2.3153, 1.6369



34.0639, 59.7876, 10.7542



10.7257, 19.0094, 1.9595

Inverse Universe

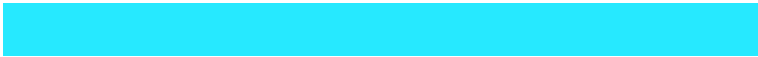
The Inverse Universe completely reimagines the original color for something new.



49.0437, 79.5817, 9.3544



47.0691, 82.5087, 15.6756



81.2905, -36.6948, -19.5544



42.5482, 2.3153, 1.6369



34.0639, 59.7876, 10.7542



10.7257, 19.0094, 1.9595

Previews

White Background



This preview shows how the HunterLab color 49.0422, 79.5869, 9.3531 looks on a white background.

Color Contrast Check

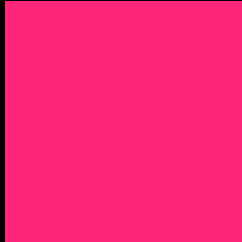
Large Text (above 18pt) WCAG AA ✓ Pass

Any Text WCAG AA × Fail

Large Text (above 18pt) WCAG AAA × Fail

Any Text WCAG AAA × Fail

Black Background



This preview shows how the HunterLab color 49.0422, 79.5869, 9.3531 looks on a black background.

Color Contrast Check

Large Text (above 18pt) WCAG AA ✓ Pass

Any Text WCAG AA ✓ Pass

Large Text (above 18pt) WCAG AAA ✓ Pass

Any Text WCAG AAA × Fail

If you want to check with other color combinations, try the [Color Contrast Checker](#).

HunterLab 49.0422, 79.5869, 9.3531 Background



This preview shows how black text looks on a background with the HunterLab color 49.0422, 79.5869, 9.3531.



This preview shows how white text looks on a background with the HunterLab color 49.0422, 79.5869,

Color Blindness Simulation

Color vision deficiency is a very complex topic, and I could not describe the different causes any better than Wikipedia does, so if you want to learn more, you should check out their [article about color blindness](#).

Dichromacy



Original Color

49.0422, 79.5869, 9.3531

Protanopia

49.4228, 1.9244, -15.7324

Deuteranopia

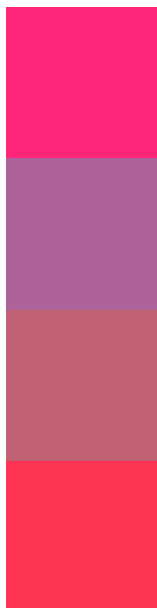
49.1966, 3.2259, 11.8969



Tritanopia

49.0386, 68.7859, 26.2529

Trichromacy



Original Color

49.0422, 79.5869, 9.3531

Protanomaly

44.8417, 30.7771, -11.6772

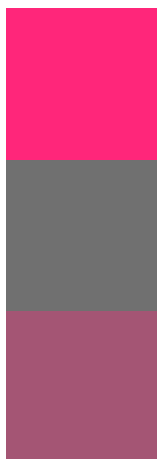
Deuteranomaly

45.8441, 33.3318, 7.4633

Tritanomaly

48.8619, 72.5022, 21.4476

Monochromacy



Original Color

49.0422, 79.5869, 9.3531

Achromatopsia

40.2529, -2.1478, 2.1870

Achromatomaly

39.5607, 28.7289, 0.1169

CSS Examples

Text

The CSS property to change the color of the text to HunterLab 49.0422, 79.5869, 9.3531 is called "color". The color property can be set on classes, ids or directly on the HTML element.

This example shows how text in the color `rgb(255, 38, 122)` looks like.

```
.text, #text, p{  
    color:rgb(255, 38, 122)  
}
```

If you want to add a text shadow in that color use the text-shadow property, you can generate a text shadow directly with our [CSS Text Shadow Generator](#).

Here you see how black text with a 4 pixel rgb(255, 38, 122) colored shadow looks like.

```
.shadow{ text-shadow: 4px 4px 2px rgb(255, 38, 122) }
```

Border

The CSS property to change the border of an element to HunterLab 49.0422, 79.5869, 9.3531 is called "border". The border property can be set on classes, ids or directly on the HTML element.

This example shows the color as border, it can be applied via the CSS property "border" or "border-color".

```
.border, #border, table{ border:4px solid rgb(255, 38, 122) }
```


If only the border color should be changed use the property `border-color`.

```
.border{ border-color:rgb(255, 38, 122) }
```

If you want to add a box shadow in that color use:

Here you see how a box with a 4 pixel `rgb(255, 38, 122)` colored shadow looks like.

```
.boxshadow{ -moz-box-shadow:4px 4px 4px  
4px rgb(255, 38, 122); -webkit-box-  
shadow:4px 4px 4px 4px rgb(255, 38, 122);  
box-shadow:4px 4px 4px 4px rgb(255, 38,  
122) }
```

Background

The CSS property to change the background color of an element to HunterLab 49.0422, 79.5869, 9.3531 is called "background". The background property can be set on classes, ids or directly on the HTML element.

```
.background, #background, body{  
background: rgb(255, 38, 122) }
```

If only the background color should be changed can be used:

```
.background{ background-color: rgb(255, 38,  
122) }
```

This example shows the color as background, it is applied via the CSS property "background".

To optimize and compress your CSS code, you can use our [online CSS compressor and optimizer](#) based on csstidy. If you want to create a linear or radial gradient as background or border, check our [CSS Gradient Generator](#).

Hey! You found this booklet interesting? Support Converting Colors with the new Membership Option!

The pro membership hides all ads, plus gives you double the colors in the color bucket, and more awesome pro features!

[Learn more, Memberships starting at \\$2.50/m!](#)

**Follow me
on Twitter!**

@ConvertingColor