

# Converting Colors

HunterLab(49.1030, 54.8200,  
0.7895)

Have a look what the booklet for  
HunterLab(49.1030, 54.8200,  
0.7895) contains.

<b>HunterLab(49.1030, 54.8200, 0.7895)</b> .....	3
<i><b>Conversions</b></i> .....	4
<i><b>Details</b></i> .....	6
<i><b>Harmonies</b></i> .....	12
<i><b>Previews</b></i> .....	24
<i><b>Color Blindness Simulation</b></i> .....	28
<i><b>CSS Examples</b></i> .....	31

# Color

**HunterLab(49.1030, 54.8200,  
0.7895)**

# Conversions

## Conversions Part 1

Format	Color
Hex	E0548D
RGB	224, 84, 141
RGB Percent	88%, 33%, 55%
CMY	0.1216, 0.6706, 0.4471
CMYK	0.00, 0.62, 0.37, 0.12
HSL	336°, 69%, 60%
HSV	336°, 62%, 88%
XYZ	38.7185, 24.1110, 27.8126
YIQ	132.3580, 65.1430, 47.4070

# Conversions

## Conversions Part 2

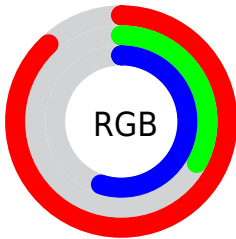
<b>Format</b>	<b>Color</b>
R <sub>Y</sub> B	224, 84, 141
Decimal	14701709
CIE Lab	56.20, 59.44, -2.42
CIE LCh	56, 59.494, 357.672
Yxy	24.1123, 0.4272, 0.2660
Android (android.graphics.Color)	4292891789 (0xFFE0548D)
YUV	132.3580, 4.2605, 80.3700
Hunter-Lab	49.1030, 54.8200, 0.7895

# Details

The HunterLab color **49.1030, 54.8200, 0.7895** is a light color, and the websafe version is hex **FF6699**. The color can be described as light muted rose. A complement of this color would be **76.1491, -45.8539, 17.6520**, and the grayscale version is **48.1439, -2.5688, 2.6158**.

A 20% lighter version of the original color is **66.2995, 46.7765, -4.4988**, and **30.1338, 50.4219, -0.0229** is the 20% darker color. If you saturate the color by 10%, you get **45.6084, 62.3320, 2.7720**, and if you desaturate by 10%, it is **53.4623, 45.9791, -0.2926**.

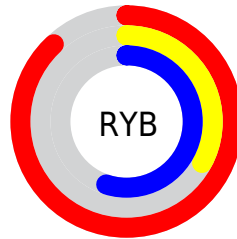
# Distribution



Red (88%)

Green (33%)

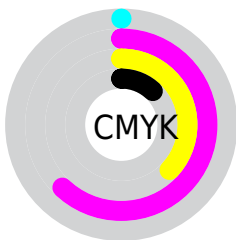
Blue (55%)



Red (88%)

Yellow (33%)

Blue (55%)

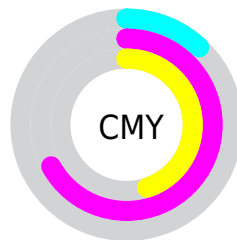


Cyan (0%)

Magenta (62%)

Yellow (37%)

Black (12%)



Cyan (12%)

Magenta (67%)

Yellow (45%)

# Brightness & Saturation Gradients

These gradients show how the HunterLab color 49.1030, 54.8200, 0.7895 changes by changing the brightness by 10 percent. The first figure shows a shift by +10% for each color and the second figure -10%.

Similar to the brightness gradients but the following saturation gradients show a change of the HunterLab color 49.1030, 54.8200, 0.7895 by changing the saturation by 10% instead.



49.1030, 54.8200,  
0.7895

49.1030, 54.8200,  
0.7895

165.3444, 68.9795,  
6.2093

39.2644, 52.7640,  
0.3849

70.8614, 58.6351,  
1.7392

30.1870, 50.6491,  
0.0310

82.6970, 60.3907,  
2.2748

21.9423, 48.5528,  
-0.2643

95.1268, 62.0462,  
2.8479

14.6251, 46.7045,  
-0.4912

108.1235, 63.6058,  
3.4562

8.2848, 46.6671,  
-0.7580

121.6636, 65.0742,  
4.0979

0.0000, INF, NaN

0.0000, NaN, NaN

135.7259, 66.4563,

4.7716

0.0000, NaN, NaN

150.2918, 67.7566,  
5.4758

0.0000, NaN, NaN

■ 49.1030, 54.8200,  
0.7895

■ 49.1030, 54.8200,  
0.7895

■ 45.6084, 62.3320,  
2.7720

■ 53.4623, 45.9791,  
-0.2926

■ 43.0546, 67.8339,  
5.6139

■ 58.5732, 36.4391,  
-0.5525

■ 41.4548, 70.8178,  
9.1167

■ 64.3252, 26.6368,  
-0.1129

■ 40.7504, 71.6481,  
11.9004

■ 70.6179, 16.8380,  
0.8964

■ 77.3664, 7.1805,  
2.3608

■ 84.5019, -2.2784,  
4.1873

■ 91.9690, -11.5270,  
6.3032

■ 97.0041, -16.4247,  
5.5802

■ 97.2560, -15.0172,  
1.9902

# Harmonies

## Analogous

The Analogous color harmony consists of three colors that are next to each other on the color wheel.



49.1043, 44.6238, -28.3736



49.1030, 54.8200, 0.7895



49.1043, 47.2596, 19.4425

# Triad

The Triadic color harmony groups three colors that are evenly spaced from another and form a triangle on the color wheel.



49.1043, 54.8164, 0.7908



49.1043, -22.9002, 28.2916



49.1043, -25.6501, -53.3315

# Complementary

The Complementary color scheme is a pair of colors which are on the opposite of each other on the color wheel.



49.1030, 54.8200, 0.7895



76.1491, -45.8539, 17.6520

# Split Complementary

Split-complementary colors differ from the complementary color scheme. The scheme consists of three colors, the original color and two neighbors of the complement color.



49.1043, -38.1771, -23.4668



49.1030, 54.8200, 0.7895



49.1043, -36.8255, 21.2956

# Square

The Square scheme is like the rectangle color scheme, but the four colors are evenly spaced on the color wheel.



49.1043, 54.8164, 0.7908



49.1043, -0.6670, 29.8519



49.1043, -41.8241, 4.4833



49.1043, -4.5483, -67.8789



# Rectangle

The Rectangle color scheme consists of four colors that form a rectangle on the color wheel.



49.1030, 54.8200, 0.7895



49.1043, 33.8696, 25.8006



49.1043, -41.8241, 4.4833



49.1043, -30.8319, -44.2003

# Sweetspot

The Sweet Spot groups the original color and five complimentary colors.



49.1043, 54.8164, 0.7908



84.3647, 15.7221, 1.5551



44.4917, 51.6557, -65.6570



38.0091, 8.7732, 0.5128

0.0000, NaN, NaN



46.2646, -2.4686, 2.5136



# Same Dimension

The Same Dimension uses a secret algorithm to generate beautiful new colors.



49.1043, 54.8164, 0.7908



51.8073, 74.4182, 4.1141



49.7935, 43.6861, 21.4582



37.1384, 1.9957, 1.3469



31.1245, 54.7895, 8.5788



8.3000, 14.8108, 0.7374



# Inverse Universe

The Inverse Universe completely reimagines the original color for something new.



49.1043, 54.8164, 0.7908



51.8073, 74.4182, 4.1141



73.8385, -30.7344, -11.6654



37.1384, 1.9957, 1.3469



31.1245, 54.7895, 8.5788



8.3000, 14.8108, 0.7374



# Previews

## White Background



This preview shows how the HunterLab color 49.1030, 54.8200, 0.7895 looks on a white background.

## Color Contrast Check

Large Text (above 18pt) WCAG AA ✓ Pass

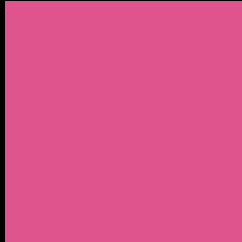
Any Text WCAG AA × Fail

Large Text (above 18pt) WCAG AAA × Fail

Any Text WCAG AAA × Fail



# Black Background



This preview shows how the HunterLab color 49.1030, 54.8200, 0.7895 looks on a black background.

## Color Contrast Check

Large Text (above 18pt) WCAG AA ✓ Pass

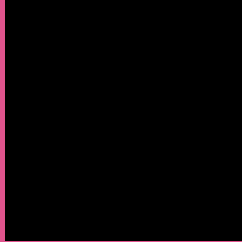
Any Text WCAG AA ✓ Pass

Large Text (above 18pt) WCAG AAA ✓ Pass

Any Text WCAG AAA × Fail

If you want to check with other color combinations, try the [Color Contrast Checker](#).

# HunterLab 49.1030, 54.8200, 0.7895 Background



This preview shows how black text looks on a background with the HunterLab color 49.1030, 54.8200, 0.7895.



This preview shows how white text looks on a background with the HunterLab color 49.1030, 54.8200,

0.7895.

# Color Blindness Simulation

Color vision deficiency is a very complex topic, and I could not describe the different causes any better than Wikipedia does, so if you want to learn more, you should check out their [article about color blindness](#).

## Dichromacy



### Original Color

49.1030, 54.8200, 0.7895

### Protanopia

49.3849, 1.8738, -16.3943

### Deuteranopia

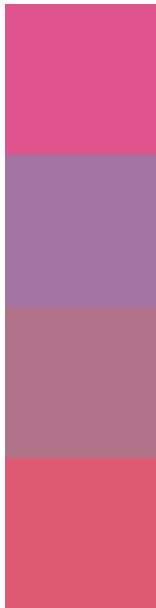
49.3390, 3.4287, 3.3594



## Tritanopia

49.0935, 44.9260, 16.7816

# Trichromacy



## Original Color

49.1030, 54.8200, 0.7895

## Protanomaly

47.5826, 19.4292, -12.3540

## Deuteranomaly

48.0322, 21.6237, 0.7617

## Tritanomaly

49.0478, 48.1572, 11.8221

# Monochromacy



## Original Color

49.1030, 54.8200, 0.7895

## Achromatopsia

48.0354, -2.5630, 2.6099

## Achromatomaly

46.9149, 16.9025, 0.2367

# CSS Examples

## Text

The CSS property to change the color of the text to HunterLab 49.1030, 54.8200, 0.7895 is called "color". The color property can be set on classes, ids or directly on the HTML element.

This example shows how text in the color `rgb(224, 84, 141)` looks like.

```
.text, #text, p{  
    color:rgb(224, 84, 141)  
}
```

If you want to add a text shadow in that color use the text-shadow property, you can generate a text shadow directly with our [CSS Text Shadow Generator](#).

Here you see how black text with a 4 pixel rgb(224, 84, 141) colored shadow looks like.

```
.shadow{ text-shadow: 4px 4px 2px rgb(224, 84, 141) }
```

## Border

The CSS property to change the border of an element to HunterLab 49.1030, 54.8200, 0.7895 is called "border". The border property can be set on classes, ids or directly on the HTML element.

This example shows the color as border, it can be applied via the CSS property "border" or "border-color".

```
.border, #border, table{ border:4px solid rgb(224, 84, 141) }
```



If only the border color should be changed use the property `border-color`.

```
.border{ border-color:rgb(224, 84, 141) }
```

If you want to add a box shadow in that color use:

Here you see how a box with a 4 pixel `rgb(224, 84, 141)` colored shadow looks like.

```
.boxshadow{ -moz-box-shadow:4px 4px 4px  
4px rgb(224, 84, 141); -webkit-box-  
shadow:4px 4px 4px 4px rgb(224, 84, 141);  
box-shadow:4px 4px 4px 4px rgb(224, 84,  
141) }
```

# Background

The CSS property to change the background color of an element to HunterLab 49.1030, 54.8200, 0.7895 is called "background". The background property can be set on classes, ids or directly on the HTML element.

```
.background, #background, body{  
background: rgb(224, 84, 141) }
```

If only the background color should be changed can be used:

```
.background{ background-color: rgb(224, 84,  
141) }
```

This example shows the color as background, it is applied via the CSS property "background".

To optimize and compress your CSS code, you can use our [online CSS compressor and optimizer](#) based on csstidy. If you want to create a linear or radial gradient as background or border, check our [CSS Gradient Generator](#).

Hey! You found this booklet interesting? Support Converting Colors with the new Membership Option!

The pro membership hides all ads, plus gives you double the colors in the color bucket, and more awesome pro features!

**[Learn more, Memberships starting at \\$2.50/m!](#)**

**Follow me  
on Twitter!**

@ConvertingColor