

# Converting Colors

HunterLab(49.1062, 64.0883,  
0.1628)

Have a look what the booklet for  
HunterLab(49.1062, 64.0883,  
0.1628) contains.

<b>HunterLab(49.1023, 63.8695, -0.0036)</b> .....	3
<b><i>Conversions</i></b> .....	4
<b><i>Details</i></b> .....	6
<b><i>Harmonies</i></b> .....	12
<b><i>Previews</i></b> .....	24
<b><i>Color Blindness Simulation</i></b> .....	28
<b><i>CSS Examples</i></b> .....	31

# Color

**HunterLab(49.1023, 63.8695,  
-0.0036)**

# Conversions

## Conversions Part 1

Format	Color
Hex	EA488F
RGB	234, 72, 143
RGB Percent	92%, 28%, 56%
CMY	0.0824, 0.7176, 0.4392
CMYK	0.00, 0.69, 0.39, 0.08
HSL	334°, 79%, 60%
HSV	334°, 69%, 92%
XYZ	41.2070, 24.1104, 28.4686
YIQ	128.5320, 73.7610, 56.4250

# Conversions

## Conversions Part 2

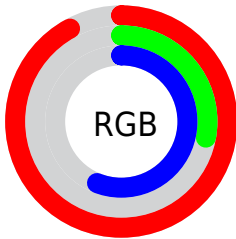
<b>Format</b>	<b>Color</b>
<b>R<sub>YB</sub></b>	234, 72, 143
Decimal	15353999
CIE <sub>Lab</sub>	56.20, 67.22, -3.41
CIE <sub>LCh</sub>	56, 67.310, 357.098
Yxy	24.1117, 0.4394, 0.2571
Android (android.graphics.Color)	4293544079 (0xFFEA488F)
YUV	128.5320, 7.1327, 92.4954
Hunter-Lab	49.1023, 63.8695, -0.0036

# Details

The HunterLab color **49.1023, 63.8695, -0.0036** is a dark color, and the websafe version is hex **FF6699**. The color can be described as middle muted rose. A complement of this color would be **79.2896, -51.6163, 22.0406**, and the grayscale version is **46.6242, -2.4878, 2.5332**.

A 20% lighter version of the original color is **64.4390, 51.8686, -7.9874**, and **31.1039, 55.8072, 0.4027** is the 20% darker color. If you saturate the color by 10%, you get **46.1134, 70.3956, 2.5588**, and if you desaturate by 10%, it is **53.0624, 55.4043, -1.5495**.

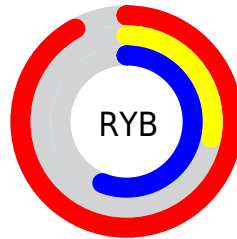
# Distribution



Red (92%)

Green (28%)

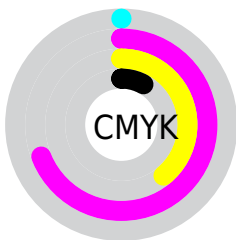
Blue (56%)



Red (92%)

Yellow (28%)

Blue (56%)

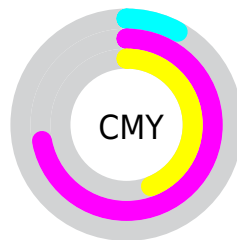


Cyan (0%)

Magenta (69%)

Yellow (39%)

Black (8%)



Cyan (8%)

Magenta (72%)

Yellow (44%)

# Brightness & Saturation Gradients

These gradients show how the HunterLab color 49.1023, 63.8695, -0.0036 changes by changing the brightness by 10 percent. The first figure shows a shift by +10% for each color and the second figure -10%.

Similar to the brightness gradients but the following saturation gradients show a change of the HunterLab color 49.1023, 63.8695, -0.0036 by changing the saturation by 10% instead.



■ 49.1023, 63.8695,  
-0.0036

■ 49.1023, 63.8695,  
-0.0036

165.3434, 80.1167,  
5.0506

■ 39.2638, 61.6260,  
-0.3565

■ 70.8607, 68.1245,  
0.8519

■ 30.1864, 59.3730,  
-0.6552

■ 82.6962, 70.1145,  
1.3440

■ 21.9418, 57.2347,  
-0.8905

■ 95.1259, 72.0076,  
1.8754

■ 14.6246, 55.5540,  
-1.0513

■ 108.1227, 73.8055,  
2.4437

■ 8.2844, 56.3383,  
-1.2551

■ 121.6627, 75.5115,  
3.0470

0.0000, INF, NaN

0.0000, INF, NaN

135.7250, 77.1293,

3.6836

0.0000, NaN, NaN

150.2909, 78.6631,  
4.3519

0.0000, NaN, NaN

■ 49.1023, 63.8695,  
-0.0036

■ 49.1023, 63.8695,  
-0.0036

■ 46.1134, 70.3956,  
2.5588

■ 53.0624, 55.4043,  
-1.5495

■ 44.1296, 74.3666,  
6.0029

■ 57.8934, 45.7415,  
-2.1140

■ 43.0376, 75.7704,  
9.9628

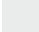
■ 63.4795, 35.4817,  
-1.8193


■ 42.9682, 75.8423,  
10.2619

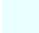
■ 69.7064, 25.0344,  
-0.8173

■ 76.4735, 14.6375,  
0.7489

 83.6970, 4.4088,  
2.7599

 91.3090, -5.6069,  
5.1218

 97.8774, -13.2424,  
6.2043

 98.0981, -12.0164,  
3.0568

# Harmonies

## Analogous

The Analogous color harmony consists of three colors that are next to each other on the color wheel.



49.1036, 51.5038, -34.2672



49.1023, 63.8695, -0.0036



49.1036, 55.3599, 20.8008

# Triad

The Triadic color harmony groups three colors that are evenly spaced from another and form a triangle on the color wheel.



49.1036, 63.8655, -0.0022



49.1036, -24.8999, 29.9503



49.1036, -28.6712, -63.0681

# Complementary

The Complementary color scheme is a pair of colors which are on the opposite of each other on the color wheel.



49.1023, 63.8695, -0.0036



79.2896, -51.6163, 22.0406

# Split Complementary

Split-complementary colors differ from the complementary color scheme. The scheme consists of three colors, the original color and two neighbors of the complement color.



49.1036, -42.0738, -26.9939



49.1023, 63.8695, -0.0036



49.1036, -40.2654, 23.2043

# Square

The Square scheme is like the rectangle color scheme, but the four colors are evenly spaced on the color wheel.



49.1036, 63.8655, -0.0022



49.1036, 0.1439, 31.2876



49.1036, -45.7874, 5.2054



49.1036, -5.3293, -81.4093



# Rectangle

The Rectangle color scheme consists of four colors that form a rectangle on the color wheel.



49.1023, 63.8695, -0.0036



49.1036, 39.8596, 27.3907



49.1036, -45.7874, 5.2054



49.1036, -34.2688, -51.8847

# Sweetspot

The Sweet Spot groups the original color and five complimentary colors.



49.1036, 63.8655, -0.0022



82.8705, 18.2710, 0.4616



42.6198, 58.9697, -80.9942



37.3697, 9.9213, -0.0207

0.0000, NaN, NaN



46.2646, -2.4686, 2.5136



# Same Dimension

The Same Dimension uses a secret algorithm to generate beautiful new colors.



49.1036, 63.8655, -0.0022



49.7934, 79.7989, 4.2986



48.6969, 53.9917, 23.4853



38.9406, 2.1694, 1.2621



32.2480, 56.9917, 7.1479



9.1413, 16.3521, 0.5007



# Inverse Universe

The Inverse Universe completely reimagines the original color for something new.



49.1036, 63.8655, -0.0022



49.7934, 79.7989, 4.2986



78.5221, -35.8137, -11.0184



38.9406, 2.1694, 1.2621



32.2480, 56.9917, 7.1479



9.1413, 16.3521, 0.5007



# Previews

## White Background



This preview shows how the HunterLab color 49.1023, 63.8695, -0.0036 looks on a white background.

## Color Contrast Check

Large Text (above 18pt) WCAG AA ✓ Pass

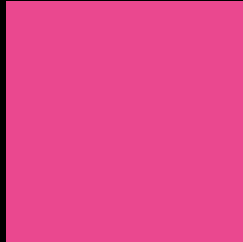
Any Text WCAG AA ✗ Fail

Large Text (above 18pt) WCAG AAA ✗ Fail

Any Text WCAG AAA ✗ Fail



# Black Background



This preview shows how the HunterLab color 49.1023, 63.8695, -0.0036 looks on a black background.

## Color Contrast Check

Large Text (above 18pt) WCAG AA ✓ Pass

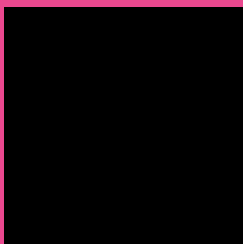
Any Text WCAG AA ✓ Pass

Large Text (above 18pt) WCAG AAA ✓ Pass

Any Text WCAG AAA × Fail

If you want to check with other color combinations, try the [Color Contrast Checker](#).

## HunterLab 49.1023, 63.8695, -0.0036 Background



This preview shows how black text looks on a background with the HunterLab color 49.1023, 63.8695, -0.0036.



This preview shows how white text looks on a background with the HunterLab color 49.1023, 63.8695, -0.0036.

-0.0036.

# Color Blindness Simulation

Color vision deficiency is a very complex topic, and I could not describe the different causes any better than Wikipedia does, so if you want to learn more, you should check out their [article about color blindness](#).

## Dichromacy



### Original Color

49.1023, 63.8695, -0.0036

### Protanopia

49.2112, 3.5316, -22.9344

### Deuteranopia

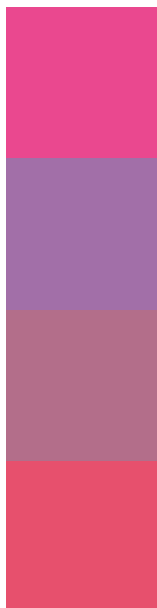
49.2725, 3.2622, 2.8367



## Tritanopia

49.0491, 51.4607, 19.4323

# Trichromacy



## Original Color

49.1023, 63.8695, -0.0036

## Protanomaly

46.7733, 23.6768, -17.7234

## Deuteranomaly

47.5085, 24.8946, -0.2973

## Tritanomaly

48.8164, 55.6560, 13.4826

# Monochromacy



## Original Color

49.1023, 63.8695, -0.0036

## Achromatopsia

46.8536, -2.5000, 2.5456

## Achromatomaly

45.4553, 20.9906, -1.0420

# CSS Examples

## Text

The CSS property to change the color of the text to HunterLab 49.1023, 63.8695, -0.0036 is called "color". The color property can be set on classes, ids or directly on the HTML element.

This example shows how text in the color `rgb(234, 72, 143)` looks like.

```
.text, #text, p{  
    color:rgb(234, 72, 143)  
}
```

If you want to add a text shadow in that color use the text-shadow property, you can generate a text shadow directly with our [CSS Text Shadow Generator](#).

Here you see how black text with a 4 pixel rgb(234, 72, 143) colored shadow looks like.

```
.shadow{ text-shadow: 4px 4px 2px rgb(234, 72, 143) }
```

## Border

The CSS property to change the border of an element to HunterLab 49.1023, 63.8695, -0.0036 is called "border". The border property can be set on classes, ids or directly on the HTML element.

This example shows the color as border, it can be applied via the CSS property "border" or "border-color".

```
.border, #border, table{ border:4px solid rgb(234, 72, 143) }
```



If only the border color should be changed use the property border-color.

```
.border{ border-color:rgb(234, 72, 143) }
```

If you want to add a box shadow in that color use:

Here you see how a box with a 4 pixel rgb(234, 72, 143) colored shadow looks like.

```
.boxshadow{ -moz-box-shadow:4px 4px 4px  
4px rgb(234, 72, 143); -webkit-box-  
shadow:4px 4px 4px 4px rgb(234, 72, 143);  
box-shadow:4px 4px 4px 4px rgb(234, 72,  
143) }
```

# Background

The CSS property to change the background color of an element to HunterLab 49.1023, 63.8695, -0.0036 is called "background". The background property can be set on classes, ids or directly on the HTML element.

```
.background, #background, body{  
background: rgb(234, 72, 143) }
```

If only the background color should be changed can be used:

```
.background{ background-color: rgb(234, 72,  
143) }
```

This example shows the color as background, it is applied via the CSS property "background".

To optimize and compress your CSS code, you can use our [online CSS compressor and optimizer](#) based on csstidy. If you want to create a linear or radial gradient as background or border, check our [CSS Gradient Generator](#).

Hey! You found this booklet interesting? Support Converting Colors with the new Membership Option!

The pro membership hides all ads, plus gives you double the colors in the color bucket, and more awesome pro features!

**[Learn more, Memberships starting at \\$2.50/m!](#)**

**Follow me  
on Twitter!**

@ConvertingColor