

Converting Colors

HunterLab(49.1690, 5.0094,
18.7214)

Have a look what the booklet for
HunterLab(49.1690, 5.0094,
18.7214) contains.

HunterLab(49.1690, 5.0094, 18.7214)	3
<i>Conversions</i>	4
<i>Details</i>	6
<i>Harmonies</i>	12
<i>Previews</i>	24
<i>Color Blindness Simulation</i>	28
<i>CSS Examples</i>	31

Color

**HunterLab(49.1690, 5.0094,
18.7214)**

Conversions

Conversions Part 1

Format	Color
Hex	A5805A
RGB	165, 128, 90
RGB Percent	65%, 50%, 35%
CMY	0.3529, 0.4980, 0.6471
CMYK	0.00, 0.22, 0.45, 0.35
HSL	30°, 29%, 50%
HSV	30°, 45%, 65%
XYZ	25.0817, 24.1759, 13.0174
YIQ	134.7310, 34.2500, -3.9740

Conversions

Conversions Part 2

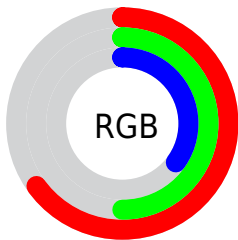
Format	Color
R_{YB}	163, 165, 90
Decimal	10846298
CIE _{Lab}	56.26, 9.23, 26.07
CIE _{LCh}	56, 27.651, 70.511
Yxy	24.1771, 0.4028, 0.3882
Android (android.graphics.Color)	4289036378 (0xFFA5805A)
YUV	134.7310, -22.0524, 26.5459
Hunter-Lab	49.1690, 5.0094, 18.7214

Details

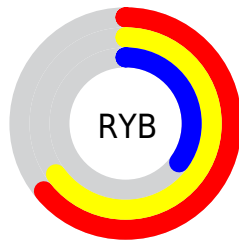
The HunterLab color $49.1690, 5.0094, 18.7214$ is a dark color, and the websafe version is hex $CC9966$. A complement of this color would be $44.7977, -4.2942, -19.5843$, and the grayscale version is $49.1915, -2.6247, 2.6727$.

A 20% lighter version of the original color is $71.0637, 4.8869, 22.8503$, and $30.2422, 4.8459, 14.2392$ is the 20% darker color. If you saturate the color by 10%, you get $46.7842, 7.5476, 20.8611$, and if you desaturate by 10%, it is $51.6713, 2.7409, 16.0840$.

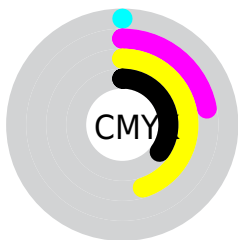
Distribution



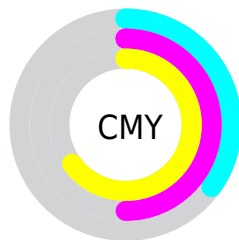
- Red (65%)
- Green (50%)
- Blue (35%)



- Red (64%)
- Yellow (65%)
- Blue (35%)



- Cyan (0%)
- Magenta (22%)
- Yellow (45%)
- Black (35%)



- Cyan (35%)
- Magenta (50%)
- Yellow (65%)

Brightness & Saturation Gradients

These gradients show how the HunterLab color 49.1690, 5.0094, 18.7214 changes by changing the brightness by 10 percent. The first figure shows a shift by +10% for each color and the second figure -10%.

Similar to the brightness gradients but the following saturation gradients show a change of the HunterLab color 49.1690, 5.0094, 18.7214 by changing the saturation by 10% instead.

■ 49.1690, 5.0094,
18.7214

■ 49.1690, 5.0094,
18.7214

165.4432, 2.4172,
36.1645

■ 39.3256, 5.0188,
16.5069

■ 70.9359, 4.7820,
22.8857

■ 30.2430, 4.9497,
14.1608

■ 82.7754, 4.5819,
24.8749

■ 21.9927, 4.7856,
11.6331

■ 95.2089, 4.3302,
26.8206

■ 14.6691, 4.5049,
9.7101

■ 108.2092, 4.0311,
28.7322

■ 8.3279, 4.3975,
5.8295

■ 121.7527, 3.6876,
30.6172

0.0000, NaN, NaN

135.8183, 3.3026,

0.0000, NaN, NaN

32.4813

0.0000, NaN, NaN

150.3874, 2.8784,
34.3291

0.0000, NaN, NaN

■ 49.1690, 5.0094,
18.7214

■ 49.1690, 5.0094,
18.7214

■ 46.7842, 7.5476,
20.8611

■ 51.6713, 2.7409,
16.0840

■ 44.5227, 10.3659,
22.4611

■ 54.2787, 0.7379,
12.9896

■ 42.3953, 13.4574,
23.4890

■ 56.9841, -1.0158,
9.4806

■ 40.4111, 16.8035,
23.9273

■ 59.7799, -2.5362,
5.5962

■ 38.5775, 20.3634,
23.7967

■ 62.6592, -3.8399,
1.3726

■ 37.7880, 22.0017,
23.6700

■ 65.6159, -4.9436,
-3.1578

■ 68.6443, -5.8633,
-7.9658

■ 71.7394, -6.6140,
-13.0258

■ 74.8967, -7.2098,
-18.3151

Harmonies

Analogous

The Analogous color harmony consists of three colors that are next to each other on the color wheel.



49.1702, 15.4301, 14.5209



49.1690, 5.0094, 18.7214



49.1702, -6.6139, 19.2514

Triad

The Triadic color harmony groups three colors that are evenly spaced from another and form a triangle on the color wheel.



49.1702, 5.0073, 18.7220



49.1702, -22.6188, -1.3371



49.1702, 12.6537, -16.2547

Complementary

The Complementary color scheme is a pair of colors which are on the opposite of each other on the color wheel.



49.1690, 5.0094, 18.7214



44.7977, -4.2942, -19.5843

Split Complementary

Split-complementary colors differ from the complementary color scheme. The scheme consists of three colors, the original color and two neighbors of the complement color.



49.1702, 1.4927, -22.9667



49.1690, 5.0094, 18.7214



49.1702, -18.4026, -13.1263

Square

The Square scheme is like the rectangle color scheme, but the four colors are evenly spaced on the color wheel.



49.1702, 5.0073, 18.7220



49.1702, -21.8660, 9.2180



49.1702, -9.8208, -21.7055



49.1702, 20.1189, -4.9092

Rectangle

The Rectangle color scheme consists of four colors that form a rectangle on the color wheel.



49.1690, 5.0094, 18.7214



49.1702, -13.4049, 17.6246



49.1702, -9.8208, -21.7055



49.1702, 9.1692, -19.2341

Sweetspot

The Sweet Spot groups the original color and five complimentary colors.



49.1702, 5.0073, 18.7220



76.7010, -1.6189, 12.0907



41.0577, 28.3027, -3.4476



35.5093, -0.5476, 6.1297



90.9709, -4.8540, 4.9426



38.3822, -2.0480, 2.0854

Same Dimension

The Same Dimension uses a secret algorithm to generate beautiful new colors.



49.1702, 5.0073, 18.7220



62.4371, 10.2999, 28.0556



59.7058, -12.3506, 26.9684



27.6612, -0.9349, 3.3530



33.0192, 18.7882, 20.6752



5.6878, 0.8684, 3.5200

Inverse Universe

The Inverse Universe completely reimagines the original color for something new.



44.7977, -4.2942, -19.5843



55.3635, -4.4591, -34.2372



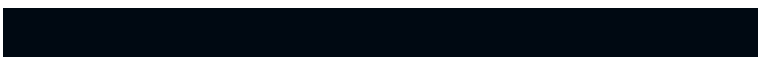
34.9327, 13.8004, -38.6510



27.2212, -1.8962, -0.4732



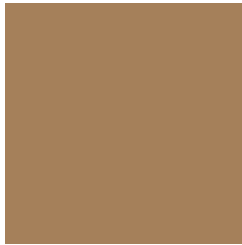
25.7896, 6.3344, -45.9090



4.8407, -0.9662, -3.9647

Previews

White Background



This preview shows how the HunterLab color 49.1690, 5.0094, 18.7214 looks on a white background.

Color Contrast Check

Large Text (above 18pt) WCAG AA ✓ Pass

Any Text WCAG AA × Fail

Large Text (above 18pt) WCAG AAA × Fail

Any Text WCAG AAA × Fail

Black Background



This preview shows how the HunterLab color 49.1690, 5.0094, 18.7214 looks on a black background.

Color Contrast Check

Large Text (above 18pt) WCAG AA ✓ Pass

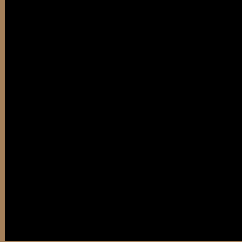
Any Text WCAG AA ✓ Pass

Large Text (above 18pt) WCAG AAA ✓ Pass

Any Text WCAG AAA × Fail

If you want to check with other color combinations, try the [Color Contrast Checker](#).

HunterLab 49.1690, 5.0094, 18.7214 Background



This preview shows how black text looks on a background with the HunterLab color 49.1690, 5.0094, 18.7214.



This preview shows how white text looks on a background with the HunterLab color 49.1690, 5.0094,

Color Blindness Simulation

Color vision deficiency is a very complex topic, and I could not describe the different causes any better than Wikipedia does, so if you want to learn more, you should check out their [article about color blindness](#).

Dichromacy



Original Color

49.1690, 5.0094, 18.7214

Protanopia

49.2232, -4.5705, 17.7773

Deuteranopia

49.1122, 3.4487, 18.6457



Tritanopia

49.2614, 13.8380, 4.3230

Trichromacy



Original Color

49.1690, 5.0094, 18.7214

Protanomaly

49.0383, -0.9323, 17.9589

Deuteranomaly

49.2191, 3.8071, 18.7432

Tritanomaly

49.2711, 10.4791, 10.2923

Monochromacy



Original Color

49.1690, 5.0094, 18.7214

Achromatopsia

49.2221, -2.6264, 2.6743

Achromatomaly

48.9341, -0.1489, 9.0040

CSS Examples

Text

The CSS property to change the color of the text to HunterLab 49.1690, 5.0094, 18.7214 is called "color". The color property can be set on classes, ids or directly on the HTML element.

This example shows how text in the color `rgb(165, 128, 90)` looks like.

```
.text, #text, p{  
    color:rgb(165, 128, 90)  
}
```

If you want to add a text shadow in that color use the text-shadow property, you can generate a text shadow directly with our [CSS Text Shadow Generator](#).

Here you see how black text with a 4 pixel rgb(165, 128, 90) colored shadow looks like.

```
.shadow{ text-shadow: 4px 4px 2px rgb(165, 128, 90) }
```

Border

The CSS property to change the border of an element to HunterLab 49.1690, 5.0094, 18.7214 is called "border". The border property can be set on classes, ids or directly on the HTML element.

This example shows the color as border, it can be applied via the CSS property "border" or "border-color".

```
.border, #border, table{ border:4px solid rgb(165, 128, 90) }
```


If only the border color should be changed use the property border-color.

```
.border{ border-color:rgb(165, 128, 90) }
```

If you want to add a box shadow in that color use:

Here you see how a box with a 4 pixel rgb(165, 128, 90) colored shadow looks like.

```
.boxshadow{ -moz-box-shadow:4px 4px 4px  
4px rgb(165, 128, 90); -webkit-box-  
shadow:4px 4px 4px 4px rgb(165, 128, 90);  
box-shadow:4px 4px 4px 4px rgb(165, 128,  
90) }
```

Background

The CSS property to change the background color of an element to HunterLab 49.1690, 5.0094, 18.7214 is called "background". The background property can be set on classes, ids or directly on the HTML element.

```
.background, #background, body{  
background: rgb(165, 128, 90) }
```

If only the background color should be changed can be used:

```
.background{ background-color: rgb(165,  
128, 90) }
```

This example shows the color as background, it is applied via the CSS property "background".

To optimize and compress your CSS code, you can use our [online CSS compressor and optimizer](#) based on csstidy. If you want to create a linear or radial gradient as background or border, check our [CSS Gradient Generator](#).

Hey! You found this booklet interesting? Support Converting Colors with the new Membership Option!

The pro membership hides all ads, plus gives you double the colors in the color bucket, and more awesome pro features!

[Learn more, Memberships starting at \\$2.50/m!](#)

**Follow me
on Twitter!**

@ConvertingColor