

Converting Colors

HunterLab(49.2421, 21.5581,
11.9095)

Have a look what the booklet for
HunterLab(49.2421, 21.5581,
11.9095) contains.

HunterLab(49.2421, 21.5581, 11.9095)	3
<i>Conversions</i>	4
<i>Details</i>	6
<i>Harmonies</i>	12
<i>Previews</i>	24
<i>Color Blindness Simulation</i>	28
<i>CSS Examples</i>	31

Color

**HunterLab(49.2421, 21.5581,
11.9095)**

Conversions

Conversions Part 1

Format	Color
Hex	BB7471
RGB	187, 116, 113
RGB Percent	73%, 45%, 44%
CMY	0.2667, 0.5451, 0.5569
CMYK	0.00, 0.38, 0.40, 0.27
HSL	2°, 35%, 59%
HSV	2°, 40%, 73%
XYZ	29.7195, 24.2478, 18.7367
YIQ	136.8870, 43.2790, 14.1190

Conversions

Conversions Part 2

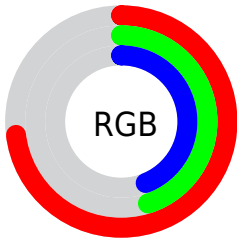
Format	Color
R_{YB}	187, 116, 113
Decimal	12285041
CIE Lab	56.34, 27.58, 13.47
CIE LCh	56, 30.692, 26.039
Yxy	24.2490, 0.4088, 0.3335
Android (android.graphics.Color)	4290475121 (0xFFBB7471)
YUV	136.8870, -11.7763, 43.9491
Hunter-Lab	49.2421, 21.5581, 11.9095

Details

The HunterLab color **49.2421, 21.5581, 11.9095** is a dark color, and the websafe version is hex **996666**. A complement of this color would be **64.3256, -21.2203, -4.0676**, and the grayscale version is **50.0052, -2.6681, 2.7169**.

A 20% lighter version of the original color is **71.0669, 22.9093, 14.4939**, and **30.1718, 19.7453, 9.1100** is the 20% darker color. If you saturate the color by 10%, you get **44.8618, 28.5285, 14.0538**, and if you desaturate by 10%, it is **54.0905, 14.7558, 9.7779**.

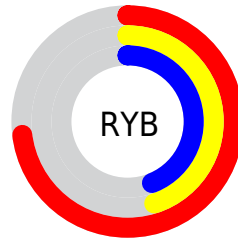
Distribution



Red (73%)

Green (45%)

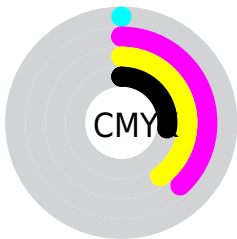
Blue (44%)



Red (73%)

Yellow (45%)

Blue (44%)

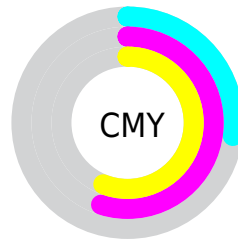


Cyan (0%)

Magenta (38%)

Yellow (40%)

Black (27%)



Cyan (27%)

Magenta (55%)

Yellow (56%)

Brightness & Saturation Gradients

These gradients show how the HunterLab color 49.2421, 21.5581, 11.9095 changes by changing the brightness by 10 percent. The first figure shows a shift by +10% for each color and the second figure -10%.

Similar to the brightness gradients but the following saturation gradients show a change of the HunterLab color 49.2421, 21.5581, 11.9095 by changing the saturation by 10% instead.

■ 49.2421, 21.5581,
11.9095

■ 49.2421, 21.5581,
11.9095

165.5527, 25.6917,
23.7147

■ 39.3935, 20.6583,
10.5596

■ 71.0185, 23.0273,
14.5487

■ 30.3052, 19.6357,
9.1698

■ 82.8624, 23.6233,
15.8529

■ 22.0487, 18.4729,
7.7168

■ 95.3000, 24.1377,
17.1542

■ 14.7180, 17.1608,
6.1590

■ 108.3044, 24.5772,
18.4562

■ 8.3754, 16.1316,
5.8627

121.8516, 24.9477,
19.7614

0.0000, INF, NaN

0.0000, NaN, NaN

135.9210, 25.2542,

21.0719

0.0000, NaN, NaN

150.4936, 25.5009,
22.3893

0.0000, NaN, NaN

■ 49.2421, 21.5581,
11.9095

■ 49.2421, 21.5581,
11.9095

■ 44.8618, 28.5285,
14.0538

■ 54.0905, 14.7558,
9.7779

■ 41.0323, 35.4784,
16.1299

■ 59.3292, 8.2179,
7.6976

■ 37.8475, 42.0629,
18.0142

■ 64.8984, 1.9657,
5.6868

■ 35.3913, 47.7955,
19.5442

■ 70.7493, -4.0121,
3.7485

■ 33.7131, 52.1451,
20.5634

■ 76.8428, -9.7422,
1.8788

■ 32.7842, 54.7265,
21.1179

■ 83.1477, -15.2563,
0.0708

■ 32.7560, 54.8027,
21.1435

■ 89.6390, -20.5859,
-1.6837

■ 94.5012, -25.0279,
-1.5638

Harmonies

Analogous

The Analogous color harmony consists of three colors that are next to each other on the color wheel.



49.2433, 24.4788, 1.0316



49.2421, 21.5581, 11.9095



49.2433, 11.9238, 18.4436

Triad

The Triadic color harmony groups three colors that are evenly spaced from another and form a triangle on the color wheel.



49.2433, 21.5556, 11.9103



49.2433, -21.4681, 14.0713



49.2433, -4.3227, -26.9515

Complementary

The Complementary color scheme is a pair of colors which are on the opposite of each other on the color wheel.



49.2421, 21.5581, 11.9095



64.3256, -21.2203, -4.0676

Split Complementary

Split-complementary colors differ from the complementary color scheme. The scheme consists of three colors, the original color and two neighbors of the complement color.



49.2433, -15.6684, -21.0293



49.2421, 21.5581, 11.9095



49.2433, -24.9051, 4.2741

Square

The Square scheme is like the rectangle color scheme, but the four colors are evenly spaced on the color wheel.



49.2433, 21.5556, 11.9103



49.2433, -12.9994, 19.4487



49.2433, -22.8947, -8.7755



49.2433, 8.6752, -23.4130

Rectangle

The Rectangle color scheme consists of four colors that form a rectangle on the color wheel.



49.2421, 21.5581, 11.9095



49.2433, 3.4645, 20.4503



49.2433, -22.8947, -8.7755



49.2433, -8.4421, -25.9683

Sweetspot

The Sweet Spot groups the original color and five complimentary colors.



49.2433, 21.5556, 11.9103



84.8589, 4.7882, 8.3068



50.8511, 34.2430, -21.2816



39.3598, 2.7568, 4.0624



97.7295, -5.2146, 5.3098



44.2712, -2.3622, 2.4053

Same Dimension

The Same Dimension uses a secret algorithm to generate beautiful new colors.



49.2433, 21.5556, 11.9103



61.0488, 36.4809, 18.2911



58.6221, 3.3091, 20.3795



30.9787, 0.8746, 2.6894



27.2371, 45.3296, 17.5769



5.5866, 8.3266, 3.5882

Inverse Universe

The Inverse Universe completely reimagines the original color for something new.



64.3256, -21.2203, -4.0676



84.8399, -31.7164, -7.1212



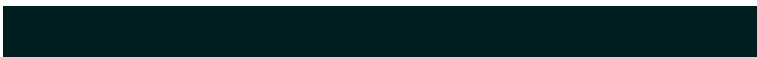
53.0401, -4.3216, -19.9461



32.7739, -4.1185, 0.8164



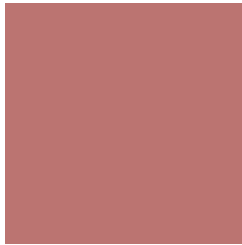
49.8250, -25.0124, -8.2824



9.9659, -5.0770, -1.4967

Previews

White Background



This preview shows how the HunterLab color 49.2421, 21.5581, 11.9095 looks on a white background.

Color Contrast Check

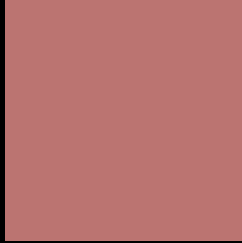
Large Text (above 18pt) WCAG AA ✓ Pass

Any Text WCAG AA ✗ Fail

Large Text (above 18pt) WCAG AAA ✗ Fail

Any Text WCAG AAA ✗ Fail

Black Background



This preview shows how the HunterLab color 49.2421, 21.5581, 11.9095 looks on a black background.

Color Contrast Check

Large Text (above 18pt) WCAG AA ✓ Pass

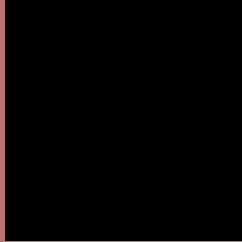
Any Text WCAG AA ✓ Pass

Large Text (above 18pt) WCAG AAA ✓ Pass

Any Text WCAG AAA × Fail

If you want to check with other color combinations, try the [Color Contrast Checker](#).

HunterLab 49.2421, 21.5581, 11.9095 Background



This preview shows how black text looks on a background with the HunterLab color 49.2421, 21.5581, 11.9095.



This preview shows how white text looks on a background with the HunterLab color 49.2421, 21.5581,

Color Blindness Simulation

Color vision deficiency is a very complex topic, and I could not describe the different causes any better than Wikipedia does, so if you want to learn more, you should check out their [article about color blindness](#).

Dichromacy



Original Color

49.2421, 21.5581, 11.9095

Protanopia

49.4173, -2.5944, 7.9227

Deuteranopia

49.2536, 3.3278, 12.6502



Tritanopia

49.1488, 24.1484, 8.1026

Trichromacy



Original Color

49.2421, 21.5581, 11.9095

Protanomaly

49.0299, 5.7577, 9.2079

Deuteranomaly

49.1322, 9.7543, 12.2977

Tritanomaly

49.2796, 23.1493, 9.7731

Monochromacy



Original Color

49.2421, 21.5581, 11.9095

Achromatopsia

50.0158, -2.6687, 2.7175

Achromatomaly

49.2215, 5.4816, 5.8265

CSS Examples

Text

The CSS property to change the color of the text to HunterLab 49.2421, 21.5581, 11.9095 is called "color". The color property can be set on classes, ids or directly on the HTML element.

This example shows how text in the color `rgb(187, 116, 113)` looks like.

```
.text, #text, p{  
    color:rgb(187, 116, 113)  
}
```

If you want to add a text shadow in that color use the text-shadow property, you can generate a text shadow directly with our [CSS Text Shadow Generator](#).

Here you see how black text with a 4 pixel rgb(187, 116, 113) colored shadow looks like.

```
.shadow{ text-shadow: 4px 4px 2px rgb(187, 116, 113) }
```

Border

The CSS property to change the border of an element to HunterLab 49.2421, 21.5581, 11.9095 is called "border". The border property can be set on classes, ids or directly on the HTML element.

This example shows the color as border, it can be applied via the CSS property "border" or "border-color".

```
.border, #border, table{ border:4px solid rgb(187, 116, 113) }
```


If only the border color should be changed use the property `border-color`.

```
.border{ border-color:rgb(187, 116, 113) }
```

If you want to add a box shadow in that color use:

Here you see how a box with a 4 pixel `rgb(187, 116, 113)` colored shadow looks like.

```
.boxshadow{ -moz-box-shadow:4px 4px 4px  
4px rgb(187, 116, 113); -webkit-box-  
shadow:4px 4px 4px 4px rgb(187, 116, 113);  
box-shadow:4px 4px 4px 4px rgb(187, 116,  
113) }
```

Background

The CSS property to change the background color of an element to HunterLab 49.2421, 21.5581, 11.9095 is called "background". The background property can be set on classes, ids or directly on the HTML element.

```
.background, #background, body{  
background: rgb(187, 116, 113) }
```

If only the background color should be changed can be used:

```
.background{ background-color: rgb(187,  
116, 113) }
```

This example shows the color as background, it is applied via the CSS property "background".

To optimize and compress your CSS code, you can use our [online CSS compressor and optimizer](#) based on csstidy. If you want to create a linear or radial gradient as background or border, check our [CSS Gradient Generator](#).

Hey! You found this booklet interesting? Support Converting Colors with the new Membership Option!

The pro membership hides all ads, plus gives you double the colors in the color bucket, and more awesome pro features!

[Learn more, Memberships starting at \\$2.50/m!](#)

**Follow me
on Twitter!**

@ConvertingColor