

Converting Colors

HunterLab(49.2705, 19.3708,
9.8004)

Have a look what the booklet for
HunterLab(49.2705, 19.3708,
9.8004) contains.

HunterLab(49.2279, 19.3662, 9.6530)	3
<i>Conversions</i>	4
<i>Details</i>	6
<i>Harmonies</i>	12
<i>Previews</i>	24
<i>Color Blindness Simulation</i>	28
<i>CSS Examples</i>	31

Color

**HunterLab(49.2279, 19.3662,
9.6530)**

Conversions

Conversions Part 1

Format	Color
Hex	B67677
RGB	182, 118, 119
RGB Percent	71%, 46%, 47%
CMY	0.2863, 0.5372, 0.5333
CMYK	0.00, 0.35, 0.35, 0.29
HSL	359°, 30%, 59%
HSV	359°, 35%, 71%
XYZ	29.0996, 24.2339, 20.5966
YIQ	137.2500, 37.8230, 13.8790

Conversions

Conversions Part 2

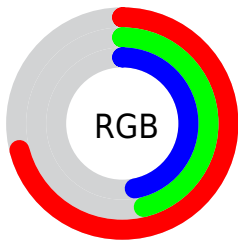
Format	Color
R_{YB}	182, 118, 119
Decimal	11957879
CIE _{Lab}	56.32, 25.26, 9.88
CIE _{LCh}	56, 27.125, 21.370
Yxy	24.2350, 0.3936, 0.3278
Android (android.graphics.Color)	4290147959 (0xFFB67677)
YUV	137.2500, -8.9972, 39.2458
Hunter-Lab	49.2279, 19.3662, 9.6530

Details

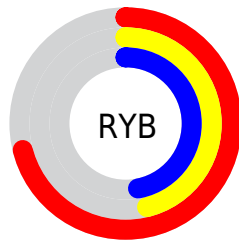
The HunterLab color **49.2279, 19.3662, 9.6530** is a dark color, and the websafe version is hex **996666**. A complement of this color would be **63.7528, -20.4573, -1.7319**, and the grayscale version is **50.1402, -2.6754, 2.7242**.

A 20% lighter version of the original color is **71.0048, 20.3173, 11.9370**, and **30.3697, 17.4887, 7.3819** is the 20% darker color. If you saturate the color by 10%, you get **44.6803, 26.4119, 11.6278**, and if you desaturate by 10%, it is **54.2356, 12.4925, 7.7997**.

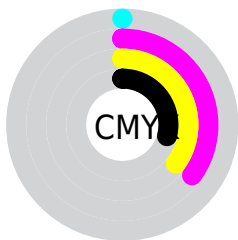
Distribution



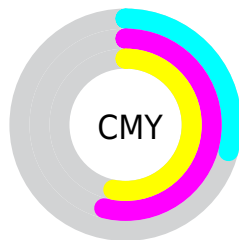
- Red (71%)
- Green (46%)
- Blue (47%)



- Red (71%)
- Yellow (46%)
- Blue (47%)



- Cyan (0%)
- Magenta (35%)
- Yellow (35%)
- Black (29%)



- Cyan (29%)
- Magenta (54%)
- Yellow (53%)

Brightness & Saturation Gradients

These gradients show how the HunterLab color 49.2279, 19.3662, 9.6530 changes by changing the brightness by 10 percent. The first figure shows a shift by +10% for each color and the second figure -10%.

Similar to the brightness gradients but the following saturation gradients show a change of the HunterLab color 49.2279, 19.3662, 9.6530 by changing the saturation by 10% instead.

■ 49.2279, 19.3662,
9.6530

■ 49.2279, 19.3662,
9.6530

165.5314, 22.6879,
19.9372

■ 39.3803, 18.5722,
8.5335

■ 71.0024, 20.6345,
11.8843

■ 30.2931, 17.6580,
7.3984

■ 82.8455, 21.1350,
13.0045

■ 22.0378, 16.6047,
6.2331

■ 95.2823, 21.5569,
14.1322

■ 14.7085, 15.3975,
5.0098

108.2859, 21.9068,
15.2694

■ 8.3661, 14.4414,
5.3526

121.8324, 22.1904,
16.4176

0.0000, INF, NaN

0.0000, NaN, NaN

135.9010, 22.4125,

17.5778

0.0000, NaN, NaN

150.4730, 22.5771,
18.7508

0.0000, NaN, NaN

■ 49.2279, 19.3662,
9.6530

■ 49.2279, 19.3662,
9.6530

■ 44.6803, 26.4119,
11.6278

■ 54.2356, 12.4925,
7.7997

■ 40.6785, 33.4542,
13.6743

■ 59.6248, 5.8748,
6.0796

■ 37.3225, 40.1565,
15.6958

■ 65.3364, -0.4734,
4.4897

■ 34.7066, 46.0217,
17.5370

■ 71.3223, -6.5673,
3.0178

■ 32.8937, 50.4814,
19.0085

■ 77.5444, -12.4347,
1.6491

■ 31.8772, 53.1292,
19.9552

■ 83.9726, -18.1074,
0.3691

■ 31.5457, 54.0427,
20.2315

■ 90.5827, -23.6158,
-0.8356

■ 94.1728, -26.2420,
-1.9944

Harmonies

Analogous

The Analogous color harmony consists of three colors that are next to each other on the color wheel.



49.2291, 20.8339, -0.5352



49.2279, 19.3662, 9.6530



49.2291, 11.7346, 16.2844

Triad

The Triadic color harmony groups three colors that are evenly spaced from another and form a triangle on the color wheel.



49.2291, 19.3639, 9.6539



49.2291, -18.5298, 13.9488



49.2291, -5.8585, -22.5519

Complementary

The Complementary color scheme is a pair of colors which are on the opposite of each other on the color wheel.



49.2279, 19.3662, 9.6530



63.7528, -20.4573, -1.7319

Split Complementary

Split-complementary colors differ from the complementary color scheme. The scheme consists of three colors, the original color and two neighbors of the complement color.



49.2291, -15.5146, -16.4316



49.2279, 19.3662, 9.6530



49.2291, -22.3838, 5.6914

Square

The Square scheme is like the rectangle color scheme, but the four colors are evenly spaced on the color wheel.



49.2291, 19.3639, 9.6539



49.2291, -10.3247, 18.3455



49.2291, -21.3322, -5.4926



49.2291, 5.5697, -20.8114

Rectangle

The Rectangle color scheme consists of four colors that form a rectangle on the color wheel.



49.2279, 19.3662, 9.6530



49.2291, 4.5311, 18.5602



49.2291, -21.3322, -5.4926



49.2291, -9.4026, -21.3033

Sweetspot

The Sweet Spot groups the original color and five complimentary colors.



49.2291, 19.3639, 9.6539



83.2930, 4.4687, 7.3146



51.1382, 29.0575, -19.2910



38.6617, 2.6458, 3.5751



96.5975, -5.1542, 5.2483



43.2801, -2.3093, 2.3515

Same Dimension

The Same Dimension uses a secret algorithm to generate beautiful new colors.



49.2291, 19.3639, 9.6539



61.5991, 33.2246, 14.9924



57.2083, 3.7846, 17.5529



30.0240, 1.0253, 2.4526



26.5112, 45.4212, 16.9758



4.9854, 8.5568, 3.0727

Inverse Universe

The Inverse Universe completely reimagines the original color for something new.



49.2291, 19.3639, 9.6539



61.5991, 33.2246, 14.9924



54.2077, -5.9781, -15.1075



30.0240, 1.0253, 2.4526



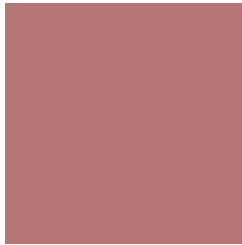
26.5112, 45.4212, 16.9758



4.9854, 8.5568, 3.0727

Previews

White Background



This preview shows how the HunterLab color 49.2279, 19.3662, 9.6530 looks on a white background.

Color Contrast Check

Large Text (above 18pt) WCAG AA ✓ Pass

Any Text WCAG AA ✗ Fail

Large Text (above 18pt) WCAG AAA ✗ Fail

Any Text WCAG AAA ✗ Fail

Black Background



This preview shows how the HunterLab color 49.2279, 19.3662, 9.6530 looks on a black background.

Color Contrast Check

Large Text (above 18pt) WCAG AA ✓ Pass

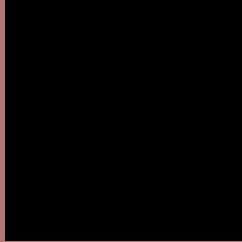
Any Text WCAG AA ✓ Pass

Large Text (above 18pt) WCAG AAA ✓ Pass

Any Text WCAG AAA × Fail

If you want to check with other color combinations, try the [Color Contrast Checker](#).

HunterLab 49.2279, 19.3662, 9.6530 Background



This preview shows how black text looks on a background with the HunterLab color 49.2279, 19.3662, 9.6530.



This preview shows how white text looks on a background with the HunterLab color 49.2279, 19.3662, 9.6530.

Color Blindness Simulation

Color vision deficiency is a very complex topic, and I could not describe the different causes any better than Wikipedia does, so if you want to learn more, you should check out their [article about color blindness](#).

Dichromacy



Original Color

49.2279, 19.3662, 9.6530

Protanopia

49.4590, -2.1899, 5.9567

Deuteranopia

49.2120, 3.5103, 10.1095



Tritanopia

49.2912, 21.1334, 7.0003

Trichromacy



Original Color

49.2279, 19.3662, 9.6530

Protanomaly

49.1424, 5.0608, 6.9615

Deuteranomaly

49.2230, 9.0439, 9.8444

Tritanomaly

49.2137, 20.7461, 8.1129

Monochromacy



Original Color

49.2279, 19.3662, 9.6530

Achromatopsia

50.0158, -2.6687, 2.7175

Achromatomaly

49.3450, 4.6191, 5.1116

CSS Examples

Text

The CSS property to change the color of the text to HunterLab 49.2279, 19.3662, 9.6530 is called "color". The color property can be set on classes, ids or directly on the HTML element.

This example shows how text in the color `rgb(182, 118, 119)` looks like.

```
.text, #text, p{  
    color:rgb(182, 118, 119)  
}
```

If you want to add a text shadow in that color use the text-shadow property, you can generate a text shadow directly with our [CSS Text Shadow Generator](#).

Here you see how black text with a 4 pixel rgb(182, 118, 119) colored shadow looks like.

```
.shadow{ text-shadow: 4px 4px 2px rgb(182, 118, 119) }
```

Border

The CSS property to change the border of an element to HunterLab 49.2279, 19.3662, 9.6530 is called "border". The border property can be set on classes, ids or directly on the HTML element.

This example shows the color as border, it can be applied via the CSS property "border" or "border-color".

```
.border, #border, table{ border:4px solid rgb(182, 118, 119) }
```


If only the border color should be changed use the property `border-color`.

```
.border{ border-color:rgb(182, 118, 119) }
```

If you want to add a box shadow in that color use:

Here you see how a box with a 4 pixel `rgb(182, 118, 119)` colored shadow looks like.

```
.boxshadow{ -moz-box-shadow:4px 4px 4px  
4px rgb(182, 118, 119); -webkit-box-  
shadow:4px 4px 4px 4px rgb(182, 118, 119);  
box-shadow:4px 4px 4px 4px rgb(182, 118,  
119) }
```

Background

The CSS property to change the background color of an element to HunterLab 49.2279, 19.3662, 9.6530 is called "background". The background property can be set on classes, ids or directly on the HTML element.

```
.background, #background, body{  
background: rgb(182, 118, 119) }
```

If only the background color should be changed can be used:

```
.background{ background-color: rgb(182,  
118, 119) }
```

This example shows the color as background, it is applied via the CSS property "background".

To optimize and compress your CSS code, you can use our [online CSS compressor and optimizer](#) based on csstidy. If you want to create a linear or radial gradient as background or border, check our [CSS Gradient Generator](#).

Hey! You found this booklet interesting? Support Converting Colors with the new Membership Option!

The pro membership hides all ads, plus gives you double the colors in the color bucket, and more awesome pro features!

[Learn more, Memberships starting at \\$2.50/m!](#)

**Follow me
on Twitter!**

@ConvertingColor