

Converting Colors

HunterLab(49.3460, 2.4371,
17.3391)

Have a look what the booklet for
HunterLab(49.3460, 2.4371,
17.3391) contains.

HunterLab(49.2596, 2.7399, 17.3705)	3
<i>Conversions</i>	4
<i>Details</i>	6
<i>Harmonies</i>	12
<i>Previews</i>	24
<i>Color Blindness Simulation</i>	28
<i>CSS Examples</i>	31

Color

**HunterLab(49.2596, 2.7399,
17.3705)**

Conversions

Conversions Part 1

Format	Color
Hex	A0825F
RGB	160, 130, 95
RGB Percent	63%, 51%, 37%
CMY	0.3725, 0.4902, 0.6274
CMYK	0.00, 0.19, 0.41, 0.37
HSL	32°, 25%, 50%
HSV	32°, 41%, 63%
XYZ	24.5454, 24.2651, 14.2164
YIQ	134.9800, 29.1150, -4.5250

Conversions

Conversions Part 2

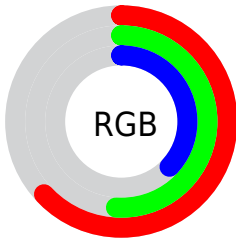
Format	Color
RYB	151, 160, 95
Decimal	10519135
CIELab	56.35, 6.54, 23.28
CIElCh	56, 24.184, 74.310
Yxy	24.2662, 0.3894, 0.3850
Android (android.graphics.Color)	4288709215 (0xFFA0825F)
YUV	134.9800, -19.7101, 21.9425
Hunter-Lab	49.2596, 2.7399, 17.3705

Details

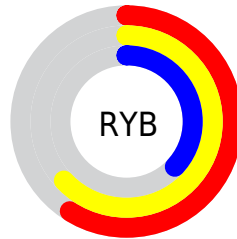
The HunterLab color $49.2596, 2.7399, 17.3705$ is a dark color, and the websafe version is hex 999966 . A complement of this color would be $44.3142, -3.4424, -17.2510$, and the grayscale version is $49.2826, -2.6296, 2.6776$.

A 20% lighter version of the original color is $71.0924, 2.2358, 21.1664$, and $30.3711, 2.9160, 13.3067$ is the 20% darker color. If you saturate the color by 10%, you get $47.0213, 4.8134, 19.7311$, and if you desaturate by 10%, it is $51.5976, 0.9213, 14.5289$.

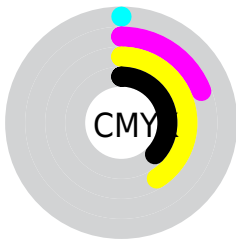
Distribution



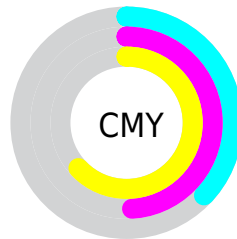
- Red (63%)
- Green (51%)
- Blue (37%)



- Red (59%)
- Yellow (63%)
- Blue (37%)



- Cyan (0%)
- Magenta (19%)
- Yellow (41%)
- Black (37%)



- Cyan (37%)
- Magenta (49%)
- Yellow (63%)

Brightness & Saturation Gradients

These gradients show how the HunterLab color 49.2596, 2.7399, 17.3705 changes by changing the brightness by 10 percent. The first figure shows a shift by +10% for each color and the second figure -10%.

Similar to the brightness gradients but the following saturation gradients show a change of the HunterLab color 49.2596, 2.7399, 17.3705 by changing the saturation by 10% instead.

■ 49.2596, 2.7399,
17.3705

■ 49.2596, 2.7399,
17.3705

165.5789, -0.8936,
33.5291

■ 39.4097, 2.8960,
15.3537

■ 71.0382, 2.2444,
21.1860

■ 30.3200, 2.9841,
13.2261

■ 82.8831, 1.9201,
23.0188

■ 22.0620, 2.9904,
10.9423

■ 95.3218, 1.5498,
24.8176

■ 14.7296, 2.8968,
8.9284

■ 108.3270, 1.1368,
26.5904

■ 8.3866, 2.9502,
5.8706

121.8752, 0.6838,
28.3435

0.0000, NaN, NaN

0.0000, NaN, NaN

135.9454, 0.1932,

30.0819

0.0000, NaN, NaN

150.5189, -0.3332,
31.8094

0.0000, NaN, NaN

■ 49.2596, 2.7399,
17.3705

■ 49.2596, 2.7399,
17.3705

■ 47.0213, 4.8134,
19.7311

■ 51.5976, 0.9213,
14.5289

■ 44.8866, 7.1551,
21.5723

■ 54.0250, -0.6480,
11.2427

■ 42.8637, 9.7640,
22.8632

■ 56.5365, -1.9837,
7.5500

■ 40.9599, 12.6321,
23.5839

■ 59.1261, -3.1008,
3.4865

■ 39.1814, 15.7378,
23.7350

■ 61.7883, -4.0144,
-0.9148

■ 37.6234, 18.7895,
23.5123

■ 64.5182, -4.7395,
-5.6239

■ 67.3111, -5.2904,
-10.6136

■ 70.1630, -5.6808,
-15.8596

■ 73.0701, -5.9232,
-21.3402

Harmonies

Analogous

The Analogous color harmony consists of three colors that are next to each other on the color wheel.



49.2608, 12.0681, 13.9306



49.2596, 2.7399, 17.3705



49.2608, -7.3452, 17.4473

Triad

The Triadic color harmony groups three colors that are evenly spaced from another and form a triangle on the color wheel.



49.2608, 2.7380, 17.3711



49.2608, -20.0906, -2.1127



49.2608, 11.6996, -12.4744

Complementary

The Complementary color scheme is a pair of colors which are on the opposite of each other on the color wheel.



49.2596, 2.7399, 17.3705



44.3142, -3.4424, -17.2510

Split Complementary

Split-complementary colors differ from the complementary color scheme. The scheme consists of three colors, the original color and two neighbors of the complement color.



49.2608, 2.2673, -18.8177



49.2596, 2.7399, 17.3705



49.2608, -15.7862, -12.0671

Square

The Square scheme is like the rectangle color scheme, but the four colors are evenly spaced on the color wheel.



49.2608, 2.7380, 17.3711



49.2608, -19.9869, 7.4256



49.2608, -7.7796, -18.6552



49.2608, 17.5197, -2.5872

Rectangle

The Rectangle color scheme consists of four colors that form a rectangle on the color wheel.



49.2596, 2.7399, 17.3705



49.2608, -13.1184, 15.6429



49.2608, -7.7796, -18.6552



49.2608, 8.8144, -15.1730

Sweetspot

The Sweet Spot groups the original color and five complimentary colors.



49.2608, 2.7380, 17.3711



75.6308, -2.4041, 11.0082



41.4095, 23.7142, -2.0088



35.2277, -1.0300, 5.4418



89.8524, -4.7943, 4.8819



37.4146, -1.9963, 2.0328

Same Dimension

The Same Dimension uses a secret algorithm to generate beautiful new colors.



49.2608, 2.7380, 17.3711



63.5611, 6.2849, 26.3930



57.6369, -11.9682, 24.1687



26.8478, -1.0152, 3.3072



33.3401, 16.2884, 20.8292



5.3194, 0.4680, 3.2860

Inverse Universe

The Inverse Universe completely reimagines the original color for something new.



44.3142, -3.4424, -17.2510



55.4961, -3.5697, -30.3809



36.4326, 11.6220, -31.4702



26.2953, -1.7278, -0.5276



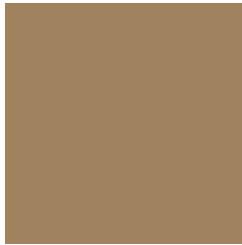
24.2112, 8.3919, -48.3776



4.3431, -0.8184, -3.6619

Previews

White Background



This preview shows how the HunterLab color 49.2596, 2.7399, 17.3705 looks on a white background.

Color Contrast Check

Large Text (above 18pt) WCAG AA ✓ Pass

Any Text WCAG AA × Fail

Large Text (above 18pt) WCAG AAA × Fail

Any Text WCAG AAA × Fail

Black Background



This preview shows how the HunterLab color 49.2596, 2.7399, 17.3705 looks on a black background.

Color Contrast Check

Large Text (above 18pt) WCAG AA ✓ Pass

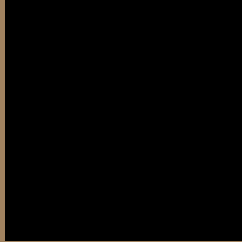
Any Text WCAG AA ✓ Pass

Large Text (above 18pt) WCAG AAA ✓ Pass

Any Text WCAG AAA × Fail

If you want to check with other color combinations, try the [Color Contrast Checker](#).

HunterLab 49.2596, 2.7399, 17.3705 Background



This preview shows how black text looks on a background with the HunterLab color 49.2596, 2.7399, 17.3705.



This preview shows how white text looks on a background with the HunterLab color 49.2596, 2.7399,

Color Blindness Simulation

Color vision deficiency is a very complex topic, and I could not describe the different causes any better than Wikipedia does, so if you want to learn more, you should check out their [article about color blindness](#).

Dichromacy



Original Color

49.2596, 2.7399, 17.3705

Protanopia

49.2971, -4.1633, 16.7020

Deuteranopia

49.3645, 3.0931, 17.4690



Tritanopia

49.2757, 11.3806, 3.4248

Trichromacy



Original Color

49.2596, 2.7399, 17.3705

Protanomaly

49.1924, -1.6803, 16.9448

Deuteranomaly

49.3645, 3.0931, 17.4690

Tritanomaly

49.3167, 8.1052, 9.1678

Monochromacy



Original Color

49.2596, 2.7399, 17.3705

Achromatopsia

49.2221, -2.6264, 2.6743

Achromatomaly

49.0514, -1.1257, 8.7272

CSS Examples

Text

The CSS property to change the color of the text to HunterLab 49.2596, 2.7399, 17.3705 is called "color". The color property can be set on classes, ids or directly on the HTML element.

This example shows how text in the color `rgb(160, 130, 95)` looks like.

```
.text, #text, p{  
    color:rgb(160, 130, 95)  
}
```

If you want to add a text shadow in that color use the text-shadow property, you can generate a text shadow directly with our [CSS Text Shadow Generator](#).

Here you see how black text with a 4 pixel rgb(160, 130, 95) colored shadow looks like.

```
.shadow{ text-shadow: 4px 4px 2px rgb(160, 130, 95) }
```

Border

The CSS property to change the border of an element to HunterLab 49.2596, 2.7399, 17.3705 is called "border". The border property can be set on classes, ids or directly on the HTML element.

This example shows the color as border, it can be applied via the CSS property "border" or "border-color".

```
.border, #border, table{ border:4px solid rgb(160, 130, 95) }
```


If only the border color should be changed use the property `border-color`.

```
.border{ border-color:rgb(160, 130, 95) }
```

If you want to add a box shadow in that color use:

Here you see how a box with a 4 pixel `rgb(160, 130, 95)` colored shadow looks like.

```
.boxshadow{ -moz-box-shadow:4px 4px 4px  
4px rgb(160, 130, 95); -webkit-box-  
shadow:4px 4px 4px 4px rgb(160, 130, 95);  
box-shadow:4px 4px 4px 4px rgb(160, 130,  
95) }
```

Background

The CSS property to change the background color of an element to HunterLab 49.2596, 2.7399, 17.3705 is called "background". The background property can be set on classes, ids or directly on the HTML element.

```
.background, #background, body{  
background: rgb(160, 130, 95) }
```

If only the background color should be changed can be used:

```
.background{ background-color: rgb(160,  
130, 95) }
```

This example shows the color as background, it is applied via the CSS property "background".

To optimize and compress your CSS code, you can use our [online CSS compressor and optimizer](#) based on csstidy. If you want to create a linear or radial gradient as background or border, check our [CSS Gradient Generator](#).

Hey! You found this booklet interesting? Support Converting Colors with the new Membership Option!

The pro membership hides all ads, plus gives you double the colors in the color bucket, and more awesome pro features!

[Learn more, Memberships starting at \\$2.50/m!](#)

**Follow me
on Twitter!**

@ConvertingColor