

Converting Colors

HunterLab(49.4534, 16.0606,
7.8396)

Have a look what the booklet for
HunterLab(49.4534, 16.0606,
7.8396) contains.

HunterLab(49.3559, 16.2657, 7.7908)	3
<i>Conversions</i>	4
<i>Details</i>	6
<i>Harmonies</i>	12
<i>Previews</i>	24
<i>Color Blindness Simulation</i>	28
<i>CSS Examples</i>	31

Color

**HunterLab(49.3559, 16.2657,
7.7908)**

Conversions

Conversions Part 1

Format	Color
Hex	B0797C
RGB	176, 121, 124
RGB Percent	69%, 47%, 49%
CMY	0.3098, 0.5255, 0.5137
CMYK	0.00, 0.31, 0.30, 0.31
HSL	357°, 26%, 58%
HSV	357°, 31%, 69%
XYZ	28.3799, 24.3600, 22.2749
YIQ	137.7870, 31.8170, 12.5930

Conversions

Conversions Part 2

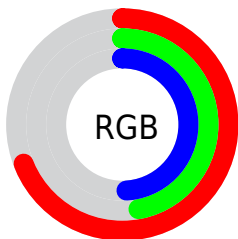
Format	Color
R_{YB}	176, 121, 124
Decimal	11565436
CIE _{Lab}	56.45, 21.92, 7.06
CIE _{LCh}	56, 23.029, 17.860
Yxy	24.3612, 0.3783, 0.3247
Android (android.graphics.Color)	4289755516 (0xFFB0797C)
YUV	137.7870, -6.7970, 33.5128
Hunter-Lab	49.3559, 16.2657, 7.7908

Details

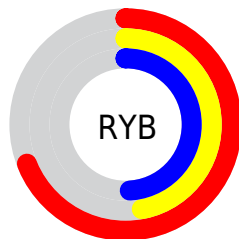
The HunterLab color $49.3559, 16.2657, 7.7908$ is a dark color, and the websafe version is hex 996666 . A complement of this color would be $61.7521, -18.5900, -0.2347$, and the grayscale version is $50.3470, -2.6864, 2.7354$.

A 20% lighter version of the original color is $71.2252, 17.1449, 9.9973$, and $30.4636, 14.7369, 6.0740$ is the 20% darker color. If you saturate the color by 10%, you get $44.8112, 23.0289, 9.4797$, and if you desaturate by 10%, it is $54.3079, 9.6827, 6.2750$.

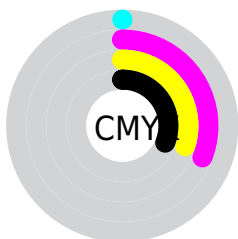
Distribution



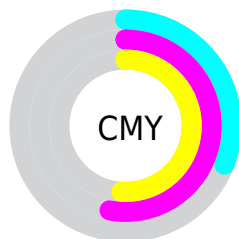
- Red (69%)
- Green (47%)
- Blue (49%)



- Red (69%)
- Yellow (47%)
- Blue (49%)



- Cyan (0%)
- Magenta (31%)
- Yellow (30%)
- Black (31%)



- Cyan (31%)
- Magenta (53%)
- Yellow (51%)

Brightness & Saturation Gradients

These gradients show how the HunterLab color 49.3559, 16.2657, 7.7908 changes by changing the brightness by 10 percent. The first figure shows a shift by +10% for each color and the second figure -10%.

Similar to the brightness gradients but the following saturation gradients show a change of the HunterLab color 49.3559, 16.2657, 7.7908 by changing the saturation by 10% instead.

■ 49.3559, 16.2657,
7.7908

■ 49.3559, 16.2657,
7.7908

165.7231, 18.3880,
16.9118

■ 39.4991, 15.6306,
6.8461

■ 71.1470, 17.2346,
9.7117

■ 30.4020, 14.8810,
5.9038

■ 82.9977, 17.5936,
10.6915

■ 22.1357, 13.9965,
4.9556

■ 95.4418, 17.8789,
11.6865

■ 14.7941, 12.9566,
3.9850

108.4523, 18.0968,
12.6976

■ 8.4486, 12.0664,
3.9251

122.0055, 18.2525,
13.7253

0.0000, INF, NaN

0.0000, NaN, NaN

136.0805, 18.3505,

14.7702

0.0000, NaN, NaN

150.6587, 18.3946,
15.8323

0.0000, NaN, NaN

■ 49.3559, 16.2657,
7.7908

■ 49.3559, 16.2657,
7.7908

■ 44.8112, 23.0289,
9.4797

■ 54.3079, 9.6827,
6.2750

■ 40.7492, 29.8463,
11.3235

■ 59.5984, 3.3367,
4.9233

■ 37.2620, 36.4565,
13.2686


■ 65.1765, -2.7700,
3.7205


■ 34.4429, 42.4450,
15.2046

■ 71.0006, -8.6549,
2.6475


■ 32.3678, 47.2826,
16.9641


■ 77.0379, -14.3444,
1.6855

 31.0643, 50.4909,
18.3601

 83.2621, -19.8669,
0.8179

 30.4157, 52.1569,
19.1183

 89.6521, -25.2490,
0.0301

 93.7924, -27.6539,
-2.4951

Harmonies

Analogous

The Analogous color harmony consists of three colors that are next to each other on the color wheel.



49.3571, 16.8126, -1.1651



49.3559, 16.2657, 7.7908



49.3571, 10.4188, 14.0493

Triad

The Triadic color harmony groups three colors that are evenly spaced from another and form a triangle on the color wheel.



49.3571, 16.2636, 7.7917



49.3571, -15.6358, 13.1085



49.3571, -6.4722, -17.8344

Complementary

The Complementary color scheme is a pair of colors which are on the opposite of each other on the color wheel.



49.3559, 16.2657, 7.7908



61.7521, -18.5900, -0.2347

Split Complementary

Split-complementary colors differ from the complementary color scheme. The scheme consists of three colors, the original color and two neighbors of the complement color.



49.3571, -14.4612, -12.2489



49.3559, 16.2657, 7.7908



49.3571, -19.4734, 6.2510

Square

The Square scheme is like the rectangle color scheme, but the four colors are evenly spaced on the color wheel.



49.3571, 16.2636, 7.7917



49.3571, -8.1904, 16.6893



49.3571, -19.0606, -3.0296



49.3571, 3.1750, -17.2029

Rectangle

The Rectangle color scheme consists of four colors that form a rectangle on the color wheel.



49.3559, 16.2657, 7.7908



49.3571, 4.5415, 16.3815



49.3571, -19.0606, -3.0296



49.3571, -9.4259, -16.5834

Sweetspot

The Sweet Spot groups the original color and five complimentary colors.



49.3571, 16.2636, 7.7917



81.8028, 2.7486, 6.2761



50.6151, 23.4324, -16.5151



37.5916, 1.8329, 3.0337



94.3401, -5.0338, 5.1257



41.3092, -2.2042, 2.2444

Same Dimension

The Same Dimension uses a secret algorithm to generate beautiful new colors.



49.3571, 16.2636, 7.7917



62.4830, 27.7134, 11.9221



55.5080, 4.0167, 14.9509



29.1762, 1.0333, 2.2523



26.0587, 44.6965, 16.2951



4.6490, 8.0270, 2.4964

Inverse Universe

The Inverse Universe completely reimagines the original color for something new.



49.3571, 16.2636, 7.7917



62.4830, 27.7134, 11.9221



54.5079, -7.0429, -11.2137



29.1762, 1.0333, 2.2523



26.0587, 44.6965, 16.2951



4.6490, 8.0270, 2.4964

Previews

White Background



This preview shows how the HunterLab color 49.3559, 16.2657, 7.7908 looks on a white background.

Color Contrast Check

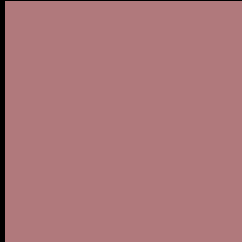
Large Text (above 18pt) WCAG AA ✓ Pass

Any Text WCAG AA × Fail

Large Text (above 18pt) WCAG AAA × Fail

Any Text WCAG AAA × Fail

Black Background



This preview shows how the HunterLab color 49.3559, 16.2657, 7.7908 looks on a black background.

Color Contrast Check

Large Text (above 18pt) WCAG AA ✓ Pass

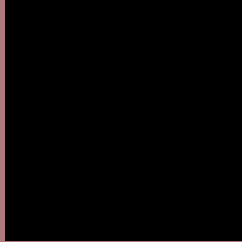
Any Text WCAG AA ✓ Pass

Large Text (above 18pt) WCAG AAA ✓ Pass

Any Text WCAG AAA × Fail

If you want to check with other color combinations, try the [Color Contrast Checker](#).

HunterLab 49.3559, 16.2657, 7.7908 Background



This preview shows how black text looks on a background with the HunterLab color 49.3559, 16.2657, 7.7908.



This preview shows how white text looks on a background with the HunterLab color 49.3559, 16.2657,

Color Blindness Simulation

Color vision deficiency is a very complex topic, and I could not describe the different causes any better than Wikipedia does, so if you want to learn more, you should check out their [article about color blindness](#).

Dichromacy



Original Color

49.3559, 16.2657, 7.7908

Protanopia

49.4802, -1.8994, 4.2985

Deuteranopia

49.5053, 3.3474, 8.5120



Tritanopia

49.3609, 17.8030, 5.7811

Trichromacy



Original Color

49.3559, 16.2657, 7.7908

Protanomaly

49.2196, 4.1465, 5.3832

Deuteranomaly

49.2851, 8.1523, 7.9690

Tritanomaly

49.3076, 17.5325, 6.5464

Monochromacy



Original Color

49.3559, 16.2657, 7.7908

Achromatopsia

50.4135, -2.6899, 2.7391

Achromatomaly

49.8712, 3.7585, 4.4150

CSS Examples

Text

The CSS property to change the color of the text to HunterLab 49.3559, 16.2657, 7.7908 is called "color". The color property can be set on classes, ids or directly on the HTML element.

This example shows how text in the color `rgb(176, 121, 124)` looks like.

```
.text, #text, p{  
    color:rgb(176, 121, 124)  
}
```

If you want to add a text shadow in that color use the text-shadow property, you can generate a text shadow directly with our [CSS Text Shadow Generator](#).

Here you see how black text with a 4 pixel rgb(176, 121, 124) colored shadow looks like.

```
.shadow{ text-shadow: 4px 4px 2px rgb(176, 121, 124) }
```

Border

The CSS property to change the border of an element to HunterLab 49.3559, 16.2657, 7.7908 is called "border". The border property can be set on classes, ids or directly on the HTML element.

This example shows the color as border, it can be applied via the CSS property "border" or "border-color".

```
.border, #border, table{ border:4px solid rgb(176, 121, 124) }
```


If only the border color should be changed use the property border-color.

```
.border{ border-color:rgb(176, 121, 124) }
```

If you want to add a box shadow in that color use:

Here you see how a box with a 4 pixel rgb(176, 121, 124) colored shadow looks like.

```
.boxshadow{ -moz-box-shadow:4px 4px 4px  
4px rgb(176, 121, 124); -webkit-box-  
shadow:4px 4px 4px 4px rgb(176, 121, 124);  
box-shadow:4px 4px 4px 4px rgb(176, 121,  
124) }
```

Background

The CSS property to change the background color of an element to HunterLab 49.3559, 16.2657, 7.7908 is called "background". The background property can be set on classes, ids or directly on the HTML element.

```
.background, #background, body{  
background: rgb(176, 121, 124) }
```

If only the background color should be changed can be used:

```
.background{ background-color: rgb(176,  
121, 124) }
```

This example shows the color as background, it is applied via the CSS property "background".

To optimize and compress your CSS code, you can use our [online CSS compressor and optimizer](#) based on csstidy. If you want to create a linear or radial gradient as background or border, check our [CSS Gradient Generator](#).

Hey! You found this booklet interesting? Support Converting Colors with the new Membership Option!

The pro membership hides all ads, plus gives you double the colors in the color bucket, and more awesome pro features!

[Learn more, Memberships starting at \\$2.50/m!](#)

**Follow me
on Twitter!**

@ConvertingColor