

Converting Colors

HunterLab(49.4719, 18.7991,
9.9754)

Have a look what the booklet for
HunterLab(49.4719, 18.7991,
9.9754) contains.

HunterLab(49.4678, 18.8618, 9.8939)	3
<i>Conversions</i>	4
<i>Details</i>	6
<i>Harmonies</i>	12
<i>Previews</i>	24
<i>Color Blindness Simulation</i>	28
<i>CSS Examples</i>	31

Color

**HunterLab(49.4678, 18.8618,
9.8939)**

Conversions

Conversions Part 1

Format	Color
Hex	B67777
RGB	182, 119, 119
RGB Percent	71%, 47%, 47%
CMY	0.2863, 0.5333, 0.5333
CMYK	0.00, 0.35, 0.35, 0.29
HSL	0°, 30%, 59%
HSV	0°, 35%, 71%
XYZ	29.2180, 24.4706, 20.6361
YIQ	137.8370, 37.5480, 13.3560

Conversions

Conversions Part 2

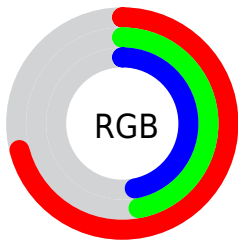
Format	Color
R_{YB}	182, 119, 119
Decimal	11958135
CIE _{Lab}	56.56, 24.70, 10.22
CIE _{LCh}	57, 26.733, 22.465
Yxy	24.4718, 0.3931, 0.3292
Android (android.graphics.Color)	4290148215 (0xFFB67777)
YUV	137.8370, -9.2866, 38.7310
Hunter-Lab	49.4678, 18.8618, 9.8939

Details

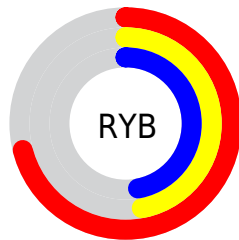
The HunterLab color **49.4678, 18.8618, 9.8939** is a dark color, and the websafe version is hex **996666**. A complement of this color would be **63.8387, -20.0652, -2.1169**, and the grayscale version is **50.3749, -2.6879, 2.7370**.

A 20% lighter version of the original color is **71.2713, 19.7851, 12.2123**, and **30.5733, 17.0242, 7.5767** is the 20% darker color. If you saturate the color by 10%, you get **44.8893, 25.8871, 11.9196**, and if you desaturate by 10%, it is **54.5035, 12.0260, 7.9677**.

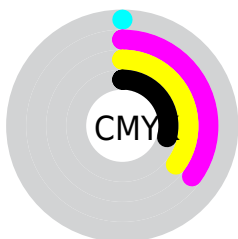
Distribution



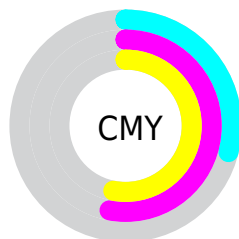
- Red (71%)
- Green (47%)
- Blue (47%)



- Red (71%)
- Yellow (47%)
- Blue (47%)



- Cyan (0%)
- Magenta (35%)
- Yellow (35%)
- Black (29%)



- Cyan (29%)
- Magenta (53%)
- Yellow (53%)

Brightness & Saturation Gradients

These gradients show how the HunterLab color 49.4678, 18.8618, 9.8939 changes by changing the brightness by 10 percent. The first figure shows a shift by +10% for each color and the second figure -10%.

Similar to the brightness gradients but the following saturation gradients show a change of the HunterLab color 49.4678, 18.8618, 9.8939 by changing the saturation by 10% instead.

■ 49.4678, 18.8618,
9.8939

■ 49.4678, 18.8618,
9.8939

165.8907, 21.9717,
20.3184

■ 39.6030, 18.0963,
8.7538

■ 71.2735, 20.0767,
12.1622

■ 30.4972, 17.2117,
7.5961

■ 83.1308, 20.5522,
13.2993

■ 22.2214, 16.1889,
6.4058

■ 95.5812, 20.9499,
14.4430

■ 14.8690, 15.0118,
5.1541

108.5978, 21.2766,
15.5955

■ 8.5201, 13.9697,
5.4338

122.1568, 21.5377,
16.7583

0.0000, INF, NaN

0.0000, NaN, NaN

136.2374, 21.7380,

17.9325

0.0000, NaN, NaN

150.8210, 21.8815,
19.1190

0.0000, NaN, NaN

■ 49.4678, 18.8618,
9.8939

■ 49.4678, 18.8618,
9.8939

■ 44.8893, 25.8871,
11.9196

■ 54.5035, 12.0260,
7.9677

■ 40.8534, 32.9351,
13.9904

■ 59.9183, 5.4574,
6.1568

■ 37.4604, 39.6789,
16.0055

■ 65.6535, -0.8346,
4.4617

■ 34.8056, 45.6278,
17.8074

■ 71.6615, -6.8677,
2.8730

■ 32.9544, 50.2091,
19.2087

■ 77.9045, -12.6713,
1.3781

■ 31.9054, 52.9907,
20.0647

■ 84.3526, -18.2780,
-0.0360

■ 31.5362, 54.0048,
20.3779

■ 90.9818, -23.7188,
-1.3814

■ 94.1728, -26.2421,
-1.9945

Harmonies

Analogous

The Analogous color harmony consists of three colors that are next to each other on the color wheel.



49.4690, 20.5537, -0.0679



49.4678, 18.8618, 9.8939



49.4690, 11.1650, 16.3323

Triad

The Triadic color harmony groups three colors that are evenly spaced from another and form a triangle on the color wheel.



49.4690, 18.8595, 9.8948



49.4690, -18.5785, 13.6127



49.4690, -5.4329, -22.2079

Complementary

The Complementary color scheme is a pair of colors which are on the opposite of each other on the color wheel.



49.4678, 18.8618, 9.8939



63.8387, -20.0652, -2.1169

Split Complementary

Split-complementary colors differ from the complementary color scheme. The scheme consists of three colors, the original color and two neighbors of the complement color.



49.4690, -15.0836, -16.4493



49.4678, 18.8618, 9.8939



49.4690, -22.2219, 5.3029

Square

The Square scheme is like the rectangle color scheme, but the four colors are evenly spaced on the color wheel.



49.4690, 18.8595, 9.8948



49.4690, -10.6007, 18.1224



49.4690, -21.0017, -5.7870



49.4690, 5.8536, -20.2097

Rectangle

The Rectangle color scheme consists of four colors that form a rectangle on the color wheel.



49.4678, 18.8618, 9.8939



49.4690, 4.0106, 18.5073



49.4690, -21.0017, -5.7870



49.4690, -8.9610, -21.0780

Sweetspot

The Sweet Spot groups the original color and five complimentary colors.



49.4690, 18.8595, 9.8948



84.0624, 3.5366, 7.2566



51.4940, 28.8941, -18.7199



39.0011, 2.2231, 3.5619



96.5975, -5.1542, 5.2483



43.2801, -2.3093, 2.3515

Same Dimension

The Same Dimension uses a secret algorithm to generate beautiful new colors.



49.4690, 18.8595, 9.8948



61.5640, 33.0427, 15.5225



57.6626, 3.1259, 17.6406



30.0205, 1.0053, 2.5051



26.5015, 45.3827, 17.1246



4.9761, 8.5198, 3.2154

Inverse Universe

The Inverse Universe completely reimagines the original color for something new.



63.8387, -20.0652, -2.1169



84.9350, -30.8617, -4.2133



54.1038, -5.4782, -15.2557



31.9540, -4.1544, 0.9150



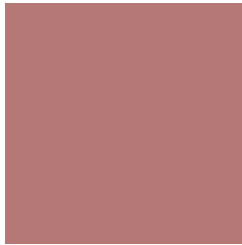
50.9981, -27.0347, -5.3831



9.5754, -5.0761, -1.0105

Previews

White Background



This preview shows how the HunterLab color 49.4678, 18.8618, 9.8939 looks on a white background.

Color Contrast Check

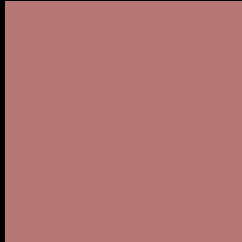
Large Text (above 18pt) WCAG AA ✓ Pass

Any Text WCAG AA × Fail

Large Text (above 18pt) WCAG AAA × Fail

Any Text WCAG AAA × Fail

Black Background



This preview shows how the HunterLab color 49.4678, 18.8618, 9.8939 looks on a black background.

Color Contrast Check

Large Text (above 18pt) WCAG AA ✓ Pass

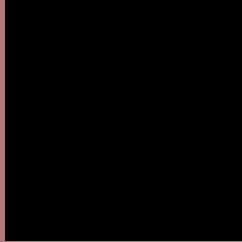
Any Text WCAG AA ✓ Pass

Large Text (above 18pt) WCAG AAA ✓ Pass

Any Text WCAG AAA × Fail

If you want to check with other color combinations, try the [Color Contrast Checker](#).

HunterLab 49.4678, 18.8618, 9.8939 Background



This preview shows how black text looks on a background with the HunterLab color 49.4678, 18.8618, 9.8939.



This preview shows how white text looks on a background with the HunterLab color 49.4678, 18.8618,

9.8939.

Color Blindness Simulation

Color vision deficiency is a very complex topic, and I could not describe the different causes any better than Wikipedia does, so if you want to learn more, you should check out their [article about color blindness](#).

Dichromacy



Original Color

49.4678, 18.8618, 9.8939

Protanopia

49.7416, -2.6608, 6.2617

Deuteranopia

49.5831, 3.3648, 10.4875



Tritanopia

49.5545, 20.7577, 6.8753

Trichromacy



Original Color

49.4678, 18.8618, 9.8939

Protanomaly

49.4110, 4.5738, 7.2457

Deuteranomaly

49.4834, 8.5509, 10.1049

Tritanomaly

49.4766, 20.3679, 7.9929

Monochromacy



Original Color

49.4678, 18.8618, 9.8939

Achromatopsia

50.4135, -2.6899, 2.7391

Achromatomaly

49.7406, 4.6051, 5.1354

CSS Examples

Text

The CSS property to change the color of the text to HunterLab 49.4678, 18.8618, 9.8939 is called "color". The color property can be set on classes, ids or directly on the HTML element.

This example shows how text in the color `rgb(182, 119, 119)` looks like.

```
.text, #text, p{  
    color:rgb(182, 119, 119)  
}
```

If you want to add a text shadow in that color use the text-shadow property, you can generate a text shadow directly with our [CSS Text Shadow Generator](#).

Here you see how black text with a 4 pixel rgb(182, 119, 119) colored shadow looks like.

```
.shadow{ text-shadow: 4px 4px 2px rgb(182, 119, 119) }
```

Border

The CSS property to change the border of an element to HunterLab 49.4678, 18.8618, 9.8939 is called "border". The border property can be set on classes, ids or directly on the HTML element.

This example shows the color as border, it can be applied via the CSS property "border" or "border-color".

```
.border, #border, table{ border:4px solid rgb(182, 119, 119) }
```


If only the border color should be changed use the property `border-color`.

```
.border{ border-color:rgb(182, 119, 119) }
```

If you want to add a box shadow in that color use:

Here you see how a box with a 4 pixel `rgb(182, 119, 119)` colored shadow looks like.

```
.boxshadow{ -moz-box-shadow:4px 4px 4px  
4px rgb(182, 119, 119); -webkit-box-  
shadow:4px 4px 4px 4px rgb(182, 119, 119);  
box-shadow:4px 4px 4px 4px rgb(182, 119,  
119) }
```

Background

The CSS property to change the background color of an element to HunterLab 49.4678, 18.8618, 9.8939 is called "background". The background property can be set on classes, ids or directly on the HTML element.

```
.background, #background, body{  
background: rgb(182, 119, 119) }
```

If only the background color should be changed can be used:

```
.background{ background-color: rgb(182,  
119, 119) }
```

This example shows the color as background, it is applied via the CSS property "background".

To optimize and compress your CSS code, you can use our [online CSS compressor and optimizer](#) based on csstidy. If you want to create a linear or radial gradient as background or border, check our [CSS Gradient Generator](#).

Hey! You found this booklet interesting? Support Converting Colors with the new Membership Option!

The pro membership hides all ads, plus gives you double the colors in the color bucket, and more awesome pro features!

[Learn more, Memberships starting at \\$2.50/m!](#)

**Follow me
on Twitter!**

@ConvertingColor