

Converting Colors

HunterLab(49.5176, 58.3233,
15.1691)

Have a look what the booklet for
HunterLab(49.5176, 58.3233,
15.1691) contains.

HunterLab(49.4913, 58.5630, 15.1862)	3
<i>Conversions</i>	4
<i>Details</i>	6
<i>Harmonies</i>	12
<i>Previews</i>	24
<i>Color Blindness Simulation</i>	28
<i>CSS Examples</i>	31

Color

**HunterLab(49.4913, 58.5630,
15.1862)**

Conversions

Conversions Part 1

Format	Color
Hex	ED4E6A
RGB	237, 78, 106
RGB Percent	93%, 31%, 42%
CMY	0.0706, 0.6941, 0.5843
CMYK	0.00, 0.67, 0.55, 0.07
HSL	349°, 82%, 62%
HSV	349°, 67%, 93%
XYZ	40.2509, 24.4939, 16.2420
YIQ	128.7330, 85.7760, 42.4160

Conversions

Conversions Part 2

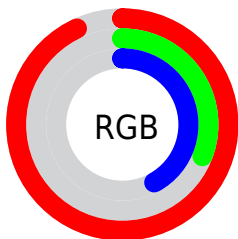
Format	Color
RYB	237, 78, 106
Decimal	15552106
CIELab	56.58, 62.63, 19.07
CIELCh	57, 65.470, 16.933
Yxy	24.4953, 0.4970, 0.3025
Android (android.graphics.Color)	4293742186 (0xFFED4E6A)
YUV	128.7330, -11.2074, 94.9502
Hunter-Lab	49.4913, 58.5630, 15.1862

Details

The HunterLab color **49.4913, 58.5630, 15.1862** is a dark color, and the websafe version is hex **FF3366**. The color can be described as middle muted rose. A complement of this color would be **81.7264, -44.8747, 5.8081**, and the grayscale version is **46.7695, -2.4955, 2.5411**.

A 20% lighter version of the original color is **64.2671, 43.4318, 10.9335**, and **30.7079, 53.6164, 11.8718** is the 20% darker color. If you saturate the color by 10%, you get **46.2074, 65.7668, 18.1988**, and if you desaturate by 10%, it is **53.8001, 49.7886, 12.4457**.

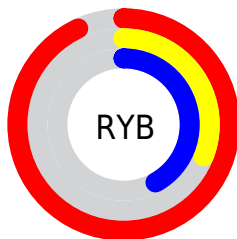
Distribution



Red (93%)

Green (31%)

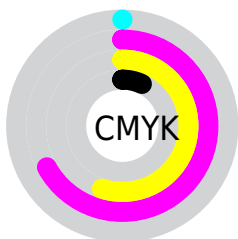
Blue (42%)



Red (93%)

Yellow (31%)

Blue (42%)

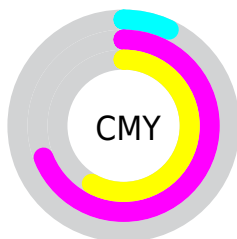


Cyan (0%)

Magenta (67%)

Yellow (55%)

Black (7%)



Cyan (7%)

Magenta (69%)

Yellow (58%)

Brightness & Saturation Gradients

These gradients show how the HunterLab color 49.4913, 58.5630, 15.1862 changes by changing the brightness by 10 percent. The first figure shows a shift by +10% for each color and the second figure -10%.

Similar to the brightness gradients but the following saturation gradients show a change of the HunterLab color 49.4913, 58.5630, 15.1862 by changing the saturation by 10% instead.

■ 49.4913, 58.5630,
15.1862

■ 49.4913, 58.5630,
15.1862

165.9262, 73.5642,
29.4384

■ 39.6250, 56.4274,
13.4636

■ 71.3002, 62.5571,
18.4848

■ 30.5174, 54.2497,
11.6612

■ 83.1589, 64.4074,
20.0857

■ 22.2396, 52.1212,
9.7436

■ 95.6107, 66.1586,
21.6664

■ 14.8849, 50.3037,
7.7687

■ 108.6286, 67.8140,
23.2332

■ 8.5351, 50.1513,
5.9746

■ 122.1888, 69.3778,
24.7905

0.0000, INF, NaN

0.0000, INF, NaN

136.2706, 70.8546,

26.3420

0.0000, NaN, NaN

150.8553, 72.2487,
27.8906

0.0000, NaN, NaN

■ 49.4913, 58.5630,
15.1862

■ 49.4913, 58.5630,
15.1862

■ 46.2074, 65.7668,
18.1988

■ 53.8001, 49.7886,
12.4457

■ 44.0100, 70.6831,
21.2138

■ 59.0100, 40.1910,
10.1275


■ 42.8521, 72.9728,
23.9004


■ 64.9889, 30.3115,
8.2820

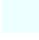
■ 42.6258, 73.3856,
24.5396

■ 71.6129, 20.4811,
6.8915

■ 78.7763, 10.8662,
5.9071

 86.3931, 1.5302,
5.2707

 94.3949, -7.5208,
4.9269

 98.3587, -11.0931,
3.3851

Harmonies

Analogous

The Analogous color harmony consists of three colors that are next to each other on the color wheel.



49.4927, 59.8885, -10.0383



49.4913, 58.5630, 15.1862



49.4927, 38.7441, 27.1114

Triad

The Triadic color harmony groups three colors that are evenly spaced from another and form a triangle on the color wheel.



49.4927, 58.5586, 15.1873



49.4927, -35.5683, 26.1611



49.4927, -14.0074, -75.2809

Complementary

The Complementary color scheme is a pair of colors which are on the opposite of each other on the color wheel.



49.4913, 58.5630, 15.1862



81.7264, -44.8747, 5.8081

Split Complementary

Split-complementary colors differ from the complementary color scheme. The scheme consists of three colors, the original color and two neighbors of the complement color.



49.4927, -33.7425, -49.7290



49.4913, 58.5630, 15.1862



49.4927, -44.2386, 12.7440

Square

The Square scheme is like the rectangle color scheme, but the four colors are evenly spaced on the color wheel.



49.4927, 58.5586, 15.1873



49.4927, -17.0806, 30.6630



49.4927, -43.6526, -14.2504



49.4927, 13.6653, -73.2976

Rectangle

The Rectangle color scheme consists of four colors that form a rectangle on the color wheel.



49.4913, 58.5630, 15.1862



49.4927, 19.7516, 30.1873



49.4927, -43.6526, -14.2504



49.4927, -21.6513, -69.2175

Sweetspot

The Sweet Spot groups the original color and five complimentary colors.



49.4927, 58.5586, 15.1873



83.2158, 14.9068, 6.6968



49.9530, 69.7450, -63.0944



37.4786, 8.2587, 3.2344

0.0000, NaN, NaN



46.2646, -2.4686, 2.5136

Same Dimension

The Same Dimension uses a secret algorithm to generate beautiful new colors.



49.4927, 58.5586, 15.1873



49.0549, 74.0702, 21.1835



58.3834, 32.5559, 29.2239



38.8553, 1.7108, 2.4787



31.5173, 54.3031, 17.8177



8.9024, 15.4778, 3.9536

Inverse Universe

The Inverse Universe completely reimagines the original color for something new.



49.4927, 58.5586, 15.1873



49.0549, 74.0702, 21.1835



65.6719, -16.7349, -32.1605



38.8553, 1.7108, 2.4787



31.5173, 54.3031, 17.8177



8.9024, 15.4778, 3.9536

Previews

White Background



This preview shows how the HunterLab color 49.4913, 58.5630, 15.1862 looks on a white background.

Color Contrast Check

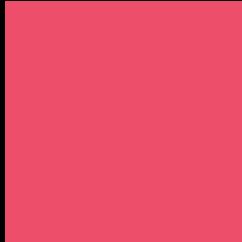
Large Text (above 18pt) WCAG AA ✓ Pass

Any Text WCAG AA × Fail

Large Text (above 18pt) WCAG AAA × Fail

Any Text WCAG AAA × Fail

Black Background



This preview shows how the HunterLab color 49.4913, 58.5630, 15.1862 looks on a black background.

Color Contrast Check

Large Text (above 18pt) WCAG AA ✓ Pass

Any Text WCAG AA ✓ Pass

Large Text (above 18pt) WCAG AAA ✓ Pass

Any Text WCAG AAA × Fail

If you want to check with other color combinations, try the [Color Contrast Checker](#).

HunterLab 49.4913, 58.5630, 15.1862 Background



This preview shows how black text looks on a background with the HunterLab color 49.4913, 58.5630, 15.1862.



This preview shows how white text looks on a background with the HunterLab color 49.4913, 58.5630,

Color Blindness Simulation

Color vision deficiency is a very complex topic, and I could not describe the different causes any better than Wikipedia does, so if you want to learn more, you should check out their [article about color blindness](#).

Dichromacy



Original Color

49.4913, 58.5630, 15.1862

Protanopia

49.5360, -1.5945, 3.5006

Deuteranopia

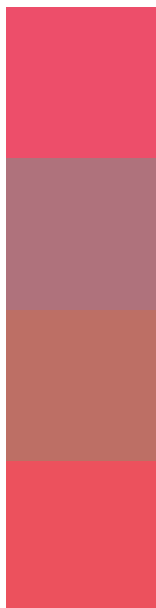
49.4208, 3.3948, 16.6495



Tritanopia

49.5372, 54.8823, 20.9480

Trichromacy



Original Color

49.4913, 58.5630, 15.1862

Protanomaly

47.5435, 19.4255, 5.8561

Deuteranomaly

48.0908, 23.5541, 14.8666

Tritanomaly

49.5056, 55.8256, 19.0797

Monochromacy



Original Color

49.4913, 58.5630, 15.1862

Achromatopsia

46.8536, -2.5000, 2.5456

Achromatomaly

45.6696, 18.4769, 4.9809

CSS Examples

Text

The CSS property to change the color of the text to HunterLab 49.4913, 58.5630, 15.1862 is called "color". The color property can be set on classes, ids or directly on the HTML element.

This example shows how text in the color `rgb(237, 78, 106)` looks like.

```
.text, #text, p{  
    color:rgb(237, 78, 106)  
}
```

If you want to add a text shadow in that color use the text-shadow property, you can generate a text shadow directly with our [CSS Text Shadow Generator](#).

Here you see how black text with a 4 pixel rgb(237, 78, 106) colored shadow looks like.

```
.shadow{ text-shadow: 4px 4px 2px rgb(237, 78, 106) }
```

Border

The CSS property to change the border of an element to HunterLab 49.4913, 58.5630, 15.1862 is called "border". The border property can be set on classes, ids or directly on the HTML element.

This example shows the color as border, it can be applied via the CSS property "border" or "border-color".

```
.border, #border, table{ border:4px solid rgb(237, 78, 106) }
```


If only the border color should be changed use the property border-color.

```
.border{ border-color:rgb(237, 78, 106) }
```

If you want to add a box shadow in that color use:

Here you see how a box with a 4 pixel rgb(237, 78, 106) colored shadow looks like.

```
.boxshadow{ -moz-box-shadow:4px 4px 4px  
4px rgb(237, 78, 106); -webkit-box-  
shadow:4px 4px 4px 4px rgb(237, 78, 106);  
box-shadow:4px 4px 4px 4px rgb(237, 78,  
106) }
```

Background

The CSS property to change the background color of an element to HunterLab 49.4913, 58.5630, 15.1862 is called "background". The background property can be set on classes, ids or directly on the HTML element.

```
.background, #background, body{  
background: rgb(237, 78, 106) }
```

If only the background color should be changed can be used:

```
.background{ background-color: rgb(237, 78,  
106) }
```

This example shows the color as background, it is applied via the CSS property "background".

To optimize and compress your CSS code, you can use our [online CSS compressor and optimizer](#) based on csstidy. If you want to create a linear or radial gradient as background or border, check our [CSS Gradient Generator](#).

Hey! You found this booklet interesting? Support Converting Colors with the new Membership Option!

The pro membership hides all ads, plus gives you double the colors in the color bucket, and more awesome pro features!

[Learn more, Memberships starting at \\$2.50/m!](#)

**Follow me
on Twitter!**

@ConvertingColor