

Converting Colors

HunterLab(49.5548, 3.2555,
12.3770)

Have a look what the booklet for
HunterLab(49.5548, 3.2555,
12.3770) contains.

HunterLab(49.5687, 3.0853, 12.2624)	3
<i>Conversions</i>	4
<i>Details</i>	6
<i>Harmonies</i>	12
<i>Previews</i>	24
<i>Color Blindness Simulation</i>	28
<i>CSS Examples</i>	31

Color

**HunterLab(49.5687, 3.0853,
12.2624)**

Conversions

Conversions Part 1

Format	Color
Hex	9D8370
RGB	157, 131, 112
RGB Percent	62%, 51%, 44%
CMY	0.3843, 0.4863, 0.5608
CMYK	0.00, 0.17, 0.29, 0.38
HSL	25°, 19%, 53%
HSV	25°, 29%, 62%
XYZ	24.9456, 24.5706, 18.7571
YIQ	136.6080, 21.5950, -0.3970

Conversions

Conversions Part 2

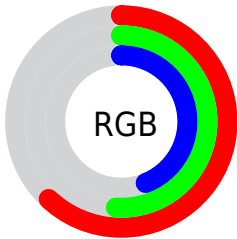
Format	Color
R_{YB}	157, 145, 112
Decimal	10322800
CIE _{Lab}	56.66, 6.96, 13.98
CIE _{LCh}	57, 15.619, 63.546
Yxy	24.5717, 0.3654, 0.3599
Android (android.graphics.Color)	4288512880 (0xFF9D8370)
YUV	136.6080, -12.1317, 17.8838
Hunter-Lab	49.5687, 3.0853, 12.2624

Details

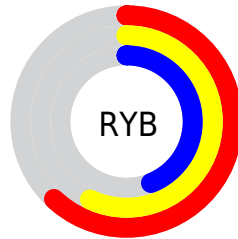
The HunterLab color $49.5687, 3.0853, 12.2624$ is a dark color, and the websafe version is hex 996666 . A complement of this color would be $49.0462, -6.2871, -8.4486$, and the grayscale version is $49.9016, -2.6626, 2.7113$.

A 20% lighter version of the original color is $71.3851, 2.5844, 14.8613$, and $30.6725, 3.1709, 9.5797$ is the 20% darker color. If you saturate the color by 10%, you get $46.8200, 5.6808, 14.8437$, and if you desaturate by 10%, it is $52.4372, 0.7243, 9.3497$.

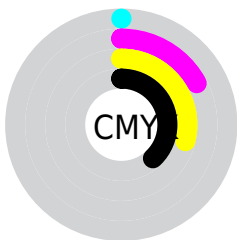
Distribution



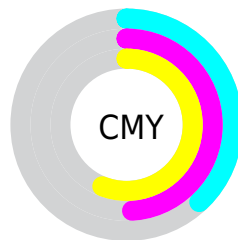
- Red (62%)
- Green (51%)
- Blue (44%)



- Red (62%)
- Yellow (57%)
- Blue (44%)



- Cyan (0%)
- Magenta (17%)
- Yellow (29%)
- Black (38%)



- Cyan (38%)
- Magenta (49%)
- Yellow (56%)

Brightness & Saturation Gradients

These gradients show how the HunterLab color 49.5687, 3.0853, 12.2624 changes by changing the brightness by 10 percent. The first figure shows a shift by +10% for each color and the second figure -10%.

Similar to the brightness gradients but the following saturation gradients show a change of the HunterLab color 49.5687, 3.0853, 12.2624 by changing the saturation by 10% instead.

■ 49.5687, 3.0853,
12.2624

■ 49.5687, 3.0853,
12.2624

166.0416, -0.3975,
24.2865

■ 39.6966, 3.2207,
10.8800

■ 71.3873, 2.6284,
14.9595

■ 30.5831, 3.2865,
9.4548

■ 83.2506, 2.3220,
16.2901

■ 22.2986, 3.2688,
7.9628

■ 95.7068, 1.9689,
17.6164

■ 14.9366, 3.1492,
6.3610

■ 108.7288, 1.5724,
18.9421

■ 8.5839, 3.0803,
6.0087

122.2931, 1.1353,
20.2701

0.0000, NaN, NaN

0.0000, NaN, NaN

136.3787, 0.6599,

21.6024

0.0000, NaN, NaN

150.9672, 0.1484,
22.9408

0.0000, NaN, NaN

■ 49.5687, 3.0853,
12.2624

■ 49.5687, 3.0853,
12.2624

■ 46.8200, 5.6808,
14.8437

■ 52.4372, 0.7243,
9.3497

■ 44.1998, 8.5284,
17.0475

■ 55.4112, -1.4130,
6.1428

■ 41.7227, 11.6326,
18.8276

■ 58.4822, -3.3457,
2.6771

■ 39.4035, 14.9888,
20.1369

■ 61.6417, -5.0913,
-1.0175

■ 37.2575, 18.5767,
20.9344

■ 64.8825, -6.6669,
-4.9156

■ 35.3000, 22.3531,
21.1961

■ 68.1980, -8.0883,
-8.9952

■ 33.5387, 26.2179,
21.0187

■ 71.5825, -9.3702,
-13.2377

■ 33.3163, 26.7264,
20.9972

■ 75.0309, -10.5259,
-17.6272

■ 78.5389, -11.5674,
-22.1502

Harmonies

Analogous

The Analogous color harmony consists of three colors that are next to each other on the color wheel.



49.5698, 8.2819, 8.8676



49.5687, 3.0853, 12.2624



49.5698, -3.4233, 13.2203

Triad

The Triadic color harmony groups three colors that are evenly spaced from another and form a triangle on the color wheel.



49.5698, 3.0836, 12.2631



49.5698, -14.5919, 1.9523



49.5698, 4.4993, -8.3509

Complementary

The Complementary color scheme is a pair of colors which are on the opposite of each other on the color wheel.



49.5687, 3.0853, 12.2624



49.0462, -6.2871, -8.4486

Split Complementary

Split-complementary colors differ from the complementary color scheme. The scheme consists of three colors, the original color and two neighbors of the complement color.



49.5698, -1.8670, -10.7974



49.5687, 3.0853, 12.2624



49.5698, -12.7051, -4.3827

Square

The Square scheme is like the rectangle color scheme, but the four colors are evenly spaced on the color wheel.



49.5698, 3.0836, 12.2631



49.5698, -13.4177, 7.7400



49.5698, -8.1296, -9.2593



49.5698, 9.1286, -2.9360

Rectangle

The Rectangle color scheme consists of four colors that form a rectangle on the color wheel.



49.5687, 3.0853, 12.2624



49.5698, -7.5748, 12.4652



49.5698, -8.1296, -9.2593



49.5698, 2.4800, -9.5774

Sweetspot

The Sweet Spot groups the original color and five complimentary colors.



49.5698, 3.0836, 12.2631



73.9468, -1.7515, 8.4489



45.3861, 16.1624, -3.2856



34.4302, -0.6459, 4.2461



88.7363, -4.7347, 4.8212



36.4511, -1.9449, 1.9805

Same Dimension

The Same Dimension uses a secret algorithm to generate beautiful new colors.



49.5698, 3.0836, 12.2631



64.1113, 6.1701, 18.5378



55.8592, -7.4426, 18.0187



26.6149, -0.6229, 3.0548



30.1421, 23.7921, 18.9899



4.9432, 1.1732, 3.0665

Inverse Universe

The Inverse Universe completely reimagines the original color for something new.



49.0462, -6.2871, -8.4486



63.2675, -8.8490, -14.7051



42.7933, 4.3015, -17.7508



26.5322, -2.1168, -0.2393



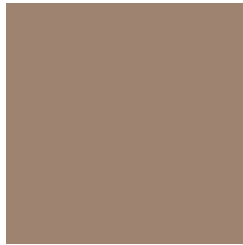
28.4373, 0.4356, -36.4844



4.7668, -1.4400, -2.8495

Previews

White Background



This preview shows how the HunterLab color 49.5687, 3.0853, 12.2624 looks on a white background.

Color Contrast Check

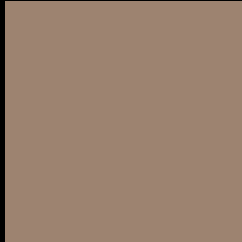
Large Text (above 18pt) WCAG AA ✓ Pass

Any Text WCAG AA × Fail

Large Text (above 18pt) WCAG AAA × Fail

Any Text WCAG AAA × Fail

Black Background



This preview shows how the HunterLab color 49.5687, 3.0853, 12.2624 looks on a black background.

Color Contrast Check

Large Text (above 18pt) WCAG AA ✓ Pass

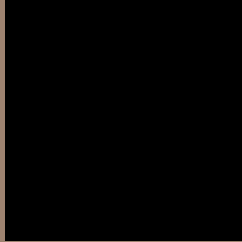
Any Text WCAG AA ✓ Pass

Large Text (above 18pt) WCAG AAA ✓ Pass

Any Text WCAG AAA × Fail

If you want to check with other color combinations, try the [Color Contrast Checker](#).

HunterLab 49.5687, 3.0853, 12.2624 Background



This preview shows how black text looks on a background with the HunterLab color 49.5687, 3.0853, 12.2624.



This preview shows how white text looks on a background with the HunterLab color 49.5687, 3.0853,

Color Blindness Simulation

Color vision deficiency is a very complex topic, and I could not describe the different causes any better than Wikipedia does, so if you want to learn more, you should check out their [article about color blindness](#).

Dichromacy



Original Color

49.5687, 3.0853, 12.2624

Protanopia

49.6617, -3.6308, 11.5317

Deuteranopia

49.6705, 3.4272, 12.3687



Tritanopia

49.4555, 9.4674, 2.2668

Trichromacy



Original Color

49.5687, 3.0853, 12.2624

Protanomaly

49.5362, -1.2206, 11.8037

Deuteranomaly

49.6705, 3.4272, 12.3687

Tritanomaly

49.3637, 7.3172, 6.0172

Monochromacy



Original Color

49.5687, 3.0853, 12.2624

Achromatopsia

50.0158, -2.6687, 2.7175

Achromatomaly

49.8154, -0.9578, 6.3730

CSS Examples

Text

The CSS property to change the color of the text to HunterLab 49.5687, 3.0853, 12.2624 is called "color". The color property can be set on classes, ids or directly on the HTML element.

This example shows how text in the color `rgb(157, 131, 112)` looks like.

```
.text, #text, p{  
    color:rgb(157, 131, 112)  
}
```

If you want to add a text shadow in that color use the text-shadow property, you can generate a text shadow directly with our [CSS Text Shadow Generator](#).

Here you see how black text with a 4 pixel rgb(157, 131, 112) colored shadow looks like.

```
.shadow{ text-shadow: 4px 4px 2px rgb(157, 131, 112) }
```

Border

The CSS property to change the border of an element to HunterLab 49.5687, 3.0853, 12.2624 is called "border". The border property can be set on classes, ids or directly on the HTML element.

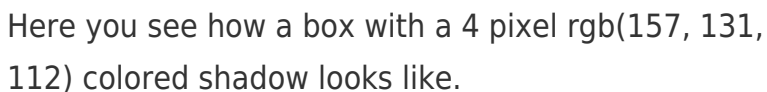
This example shows the color as border, it can be applied via the CSS property "border" or "border-color".

```
.border, #border, table{ border:4px solid rgb(157, 131, 112) }
```


If only the border color should be changed use the property `border-color`.

```
.border{ border-color:rgb(157, 131, 112) }
```

If you want to add a box shadow in that color use:



Here you see how a box with a 4 pixel `rgb(157, 131, 112)` colored shadow looks like.

```
.boxshadow{ -moz-box-shadow:4px 4px 4px 4px rgb(157, 131, 112); -webkit-box-shadow:4px 4px 4px 4px rgb(157, 131, 112); box-shadow:4px 4px 4px 4px rgb(157, 131, 112) }
```

Background

The CSS property to change the background color of an element to HunterLab 49.5687, 3.0853, 12.2624 is called "background". The background property can be set on classes, ids or directly on the HTML element.

```
.background, #background, body{  
background: rgb(157, 131, 112) }
```

If only the background color should be changed can be used:

```
.background{ background-color: rgb(157,  
131, 112) }
```

This example shows the color as background, it is applied via the CSS property "background".

To optimize and compress your CSS code, you can use our [online CSS compressor and optimizer](#) based on csstidy. If you want to create a linear or radial gradient as background or border, check our [CSS Gradient Generator](#).

Hey! You found this booklet interesting? Support Converting Colors with the new Membership Option!

The pro membership hides all ads, plus gives you double the colors in the color bucket, and more awesome pro features!

[Learn more, Memberships starting at \\$2.50/m!](#)

**Follow me
on Twitter!**

@ConvertingColor