

Converting Colors

HunterLab(49.5679, 5.6655,
13.6727)

Have a look what the booklet for
HunterLab(49.5679, 5.6655,
13.6727) contains.

HunterLab(49.5679, 5.6656, 13.6727)	3
<i>Conversions</i>	4
<i>Details</i>	6
<i>Harmonies</i>	12
<i>Previews</i>	24
<i>Color Blindness Simulation</i>	28
<i>CSS Examples</i>	31

Color

**HunterLab(49.5679, 5.6656,
13.6727)**

Conversions

Conversions Part 1

Format	Color
Hex	A3816C
RGB	163, 129, 108
RGB Percent	64%, 51%, 42%
CMY	0.3608, 0.4941, 0.5765
CMYK	0.00, 0.21, 0.34, 0.36
HSL	23°, 23%, 53%
HSV	23°, 34%, 64%
XYZ	25.6613, 24.5698, 17.5773
YIQ	136.7720, 27.0050, 0.6770

Conversions

Conversions Part 2

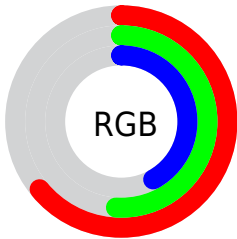
Format	Color
R_{YB}	163, 142, 108
Decimal	10715500
CIE _{Lab}	56.65, 9.99, 16.37
CIE _{LCh}	57, 19.177, 58.589
Yxy	24.5709, 0.3784, 0.3623
Android (android.graphics.Color)	4288905580 (0xFFA3816C)
YUV	136.7720, -14.1846, 23.0020
Hunter-Lab	49.5679, 5.6656, 13.6727

Details

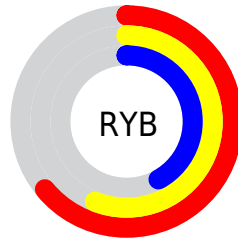
The HunterLab color $49.5679, 5.6656, 13.6727$ is a dark color, and the websafe version is hex 996666 . A complement of this color would be $50.1773, -7.8834, -10.1622$, and the grayscale version is $49.9732, -2.6664, 2.7151$.

A 20% lighter version of the original color is $71.4521, 5.5798, 16.5293$, and $30.6244, 5.3624, 10.6880$ is the 20% darker color. If you saturate the color by 10%, you get $46.6163, 8.8326, 16.0884$, and if you desaturate by 10%, it is $52.6666, 2.7513, 10.9216$.

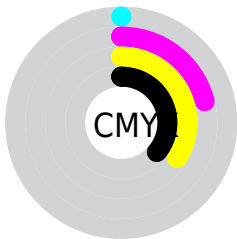
Distribution



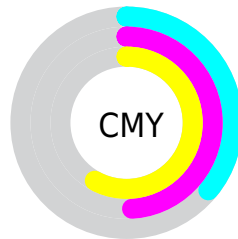
- Red (64%)
- Green (51%)
- Blue (42%)



- Red (64%)
- Yellow (56%)
- Blue (42%)



- Cyan (0%)
- Magenta (21%)
- Yellow (34%)
- Black (36%)




- Cyan (36%)
- Magenta (49%)
- Yellow (58%)

Brightness & Saturation Gradients

These gradients show how the HunterLab color 49.5679, 5.6656, 13.6727 changes by changing the brightness by 10 percent. The first figure shows a shift by +10% for each color and the second figure -10%.


Similar to the brightness gradients but the following saturation gradients show a change of the HunterLab color 49.5679, 5.6656, 13.6727 by changing the saturation by 10% instead.

 49.5679, 5.6656,
13.6727


 49.5679, 5.6656,
13.6727


166.0404, 3.3512,
26.7308

 39.6959, 5.6369,
12.1327


 71.3865, 5.5091,
16.6483

 30.5824, 5.5272,
10.5330


 83.2497, 5.3419,
18.1042

 22.2981, 5.3197,
8.8440

 95.7058, 5.1219,
19.5486

 14.9361, 4.9925,
7.0280

 108.7278, 4.8531,
20.9862

 8.5834, 4.7028,
6.0084

122.2920, 4.5390,
22.4207

0.0000, NaN, NaN

136.3777, 4.1824,

0.0000, NaN, NaN

23.8549

0.0000, NaN, NaN

150.9660, 3.7858,
25.2910

0.0000, NaN, NaN

■ 49.5679, 5.6656,
13.6727

■ 49.5679, 5.6656,
13.6727

■ 46.6163, 8.8326,
16.0884

■ 52.6666, 2.7513,
10.9216

■ 43.8248, 12.2662,
18.1161

■ 55.8943, 0.0805,
7.8778

■ 41.2130, 15.9609,
19.7023

■ 59.2394, -2.3669,
4.5803

■ 38.8007, 19.8953,
20.7939

■ 62.6907, -4.6102,
1.0619

■ 36.6085, 24.0216,
21.3478

■ 66.2386, -6.6686,
-2.6502

■ 34.6559, 28.2568,
21.3483

■ 69.8748, -8.5602,
-6.5330

■ 33.5540, 30.8675,
21.2162

■ 73.5919, -10.3018,
-10.5675

■ 77.3837, -11.9088,
-14.7376

■ 81.2447, -13.3948,
-19.0300

Harmonies

Analogous

The Analogous color harmony consists of three colors that are next to each other on the color wheel.



49.5691, 11.6603, 9.2281



49.5679, 5.6656, 13.6727



49.5691, -2.2666, 15.2562

Triad

The Triadic color harmony groups three colors that are evenly spaced from another and form a triangle on the color wheel.



49.5691, 5.6637, 13.6734



49.5691, -17.1657, 3.0586



49.5691, 4.9640, -12.0185

Complementary

The Complementary color scheme is a pair of colors which are on the opposite of each other on the color wheel.



49.5679, 5.6656, 13.6727



50.1773, -7.8834, -10.1622

Split Complementary

Split-complementary colors differ from the complementary color scheme. The scheme consists of three colors, the original color and two neighbors of the complement color.



49.5691, -3.0273, -14.3567



49.5679, 5.6656, 13.6727



49.5691, -15.4966, -4.8621

Square

The Square scheme is like the rectangle color scheme, but the four colors are evenly spaced on the color wheel.



49.5691, 5.6637, 13.6734



49.5691, -15.1555, 9.7626



49.5691, -10.4449, -11.5544



49.5691, 11.2386, -5.5884

Rectangle

The Rectangle color scheme consists of four colors that form a rectangle on the color wheel.



49.5679, 5.6656, 13.6727



49.5691, -7.4769, 14.7043



49.5691, -10.4449, -11.5544



49.5691, 2.3741, -13.3502

Sweetspot

The Sweet Spot groups the original color and five complimentary colors.



49.5691, 5.6637, 13.6734



76.3755, -1.0900, 9.0096



45.2659, 20.9946, -5.6911



35.9136, -0.3051, 4.5454



90.9709, -4.8540, 4.9426



38.3822, -2.0480, 2.0854

Same Dimension

The Same Dimension uses a secret algorithm to generate beautiful new colors.



49.5691, 5.6637, 13.6734



63.5482, 10.5112, 20.6120



57.0391, -7.0502, 20.2763



27.4020, -0.4972, 3.0716



29.7193, 26.8479, 18.7829



5.2453, 1.7324, 3.2625

Inverse Universe

The Inverse Universe completely reimagines the original color for something new.



50.1773, -7.8834, -10.1622



64.5101, -11.1369, -17.4787



42.6267, 4.8162, -21.8449



27.4857, -2.3294, -0.1521



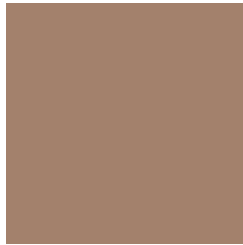
30.5631, -2.2022, -33.4473



5.3225, -1.6676, -3.0528

Previews

White Background



This preview shows how the HunterLab color 49.5679, 5.6656, 13.6727 looks on a white background.

Color Contrast Check

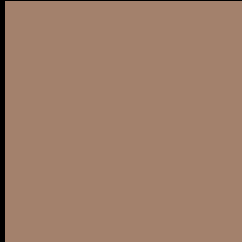
Large Text (above 18pt) WCAG AA ✓ Pass

Any Text WCAG AA × Fail

Large Text (above 18pt) WCAG AAA × Fail

Any Text WCAG AAA × Fail

Black Background



This preview shows how the HunterLab color 49.5679, 5.6656, 13.6727 looks on a black background.

Color Contrast Check

Large Text (above 18pt) WCAG AA ✓ Pass

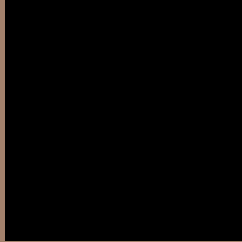
Any Text WCAG AA ✓ Pass

Large Text (above 18pt) WCAG AAA ✓ Pass

Any Text WCAG AAA × Fail

If you want to check with other color combinations, try the [Color Contrast Checker](#).

HunterLab 49.5679, 5.6656, 13.6727 Background



This preview shows how black text looks on a background with the HunterLab color 49.5679, 5.6656, 13.6727.



This preview shows how white text looks on a background with the HunterLab color 49.5679, 5.6656,

Color Blindness Simulation

Color vision deficiency is a very complex topic, and I could not describe the different causes any better than Wikipedia does, so if you want to learn more, you should check out their [article about color blindness](#).

Dichromacy



Original Color

49.5679, 5.6656, 13.6727

Protanopia

49.6843, -3.6871, 12.6042

Deuteranopia

49.6852, 3.3015, 13.7437



Tritanopia

49.5212, 12.2194, 3.2853

Trichromacy



Original Color

49.5679, 5.6656, 13.6727

Protanomaly

49.4774, -0.1286, 12.8080

Deuteranomaly

49.5192, 4.1305, 13.5991

Tritanomaly

49.3981, 9.9600, 7.3260

Monochromacy



Original Color

49.5679, 5.6656, 13.6727

Achromatopsia

50.0158, -2.6687, 2.7175

Achromatomaly

49.6664, -0.1395, 7.0385

CSS Examples

Text

The CSS property to change the color of the text to HunterLab 49.5679, 5.6656, 13.6727 is called "color". The color property can be set on classes, ids or directly on the HTML element.

This example shows how text in the color `rgb(163, 129, 108)` looks like.

```
.text, #text, p{  
    color:rgb(163, 129, 108)  
}
```

If you want to add a text shadow in that color use the text-shadow property, you can generate a text shadow directly with our [CSS Text Shadow Generator](#).

Here you see how black text with a 4 pixel rgb(163, 129, 108) colored shadow looks like.

```
.shadow{ text-shadow: 4px 4px 2px rgb(163, 129, 108) }
```

Border

The CSS property to change the border of an element to HunterLab 49.5679, 5.6656, 13.6727 is called "border". The border property can be set on classes, ids or directly on the HTML element.

This example shows the color as border, it can be applied via the CSS property "border" or "border-color".

```
.border, #border, table{ border:4px solid rgb(163, 129, 108) }
```


If only the border color should be changed use the property `border-color`.

```
.border{ border-color:rgb(163, 129, 108) }
```

If you want to add a box shadow in that color use:

Here you see how a box with a 4 pixel `rgb(163, 129, 108)` colored shadow looks like.

```
.boxshadow{ -moz-box-shadow:4px 4px 4px  
4px rgb(163, 129, 108); -webkit-box-  
shadow:4px 4px 4px 4px rgb(163, 129, 108);  
box-shadow:4px 4px 4px 4px rgb(163, 129,  
108) }
```

Background

The CSS property to change the background color of an element to HunterLab 49.5679, 5.6656, 13.6727 is called "background". The background property can be set on classes, ids or directly on the HTML element.

```
.background, #background, body{  
background: rgb(163, 129, 108) }
```

If only the background color should be changed can be used:

```
.background{ background-color: rgb(163,  
129, 108) }
```

This example shows the color as background, it is applied via the CSS property "background".

To optimize and compress your CSS code, you can use our [online CSS compressor and optimizer](#) based on csstidy. If you want to create a linear or radial gradient as background or border, check our [CSS Gradient Generator](#).

Hey! You found this booklet interesting? Support Converting Colors with the new Membership Option!

The pro membership hides all ads, plus gives you double the colors in the color bucket, and more awesome pro features!

[Learn more, Memberships starting at \\$2.50/m!](#)

**Follow me
on Twitter!**

@ConvertingColor