

Converting Colors

HunterLab(49.6189, 17.1291,
7.6912)

Have a look what the booklet for
HunterLab(49.6189, 17.1291,
7.6912) contains.

HunterLab(49.6189, 17.1291, 7.6912)	3
<i>Conversions</i>	4
<i>Details</i>	6
<i>Harmonies</i>	12
<i>Previews</i>	24
<i>Color Blindness Simulation</i>	28
<i>CSS Examples</i>	31

Color

**HunterLab(49.6189, 17.1291,
7.6912)**

Conversions

Conversions Part 1

Format	Color
Hex	B2797D
RGB	178, 121, 125
RGB Percent	70%, 47%, 49%
CMY	0.3020, 0.5255, 0.5098
CMYK	0.00, 0.32, 0.30, 0.30
HSL	356°, 27%, 59%
HSV	356°, 32%, 70%
XYZ	28.8991, 24.6204, 22.6311
YIQ	138.4990, 32.6880, 13.3280

Conversions

Conversions Part 2

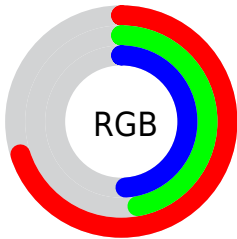
Format	Color
R_{YB}	178, 121, 125
Decimal	11696509
CIE _{Lab}	56.70, 22.84, 6.88
CIE _{LCh}	57, 23.850, 16.769
Yxy	24.6215, 0.3795, 0.3233
Android (android.graphics.Color)	4289886589 (0xFFB2797D)
YUV	138.4990, -6.6550, 34.6424
Hunter-Lab	49.6189, 17.1291, 7.6912

Details

The HunterLab color $49.6189, 17.1291, 7.6912$ is a dark color, and the websafe version is hex 996666 . A complement of this color would be $62.4197, -19.3077, 0.0863$, and the grayscale version is $50.6296, -2.7015, 2.7508$.

A 20% lighter version of the original color is $71.5183, 18.1878, 9.4698$, and $30.7272, 15.5545, 6.0130$ is the 20% darker color. If you saturate the color by 10%, you get $45.0539, 24.0131, 9.3468$, and if you desaturate by 10%, it is $54.6015, 10.4114, 6.2296$.

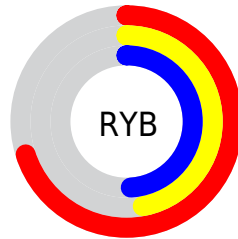
Distribution



Red (70%)

Green (47%)

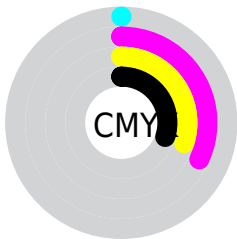
Blue (49%)



Red (70%)

Yellow (47%)

Blue (49%)

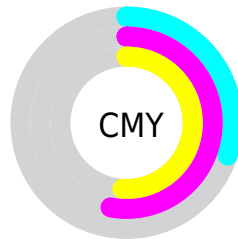


Cyan (0%)

Magenta (32%)

Yellow (30%)

Black (30%)



Cyan (30%)

Magenta (53%)

Yellow (51%)

Brightness & Saturation Gradients

These gradients show how the HunterLab color 49.6189, 17.1291, 7.6912 changes by changing the brightness by 10 percent. The first figure shows a shift by +10% for each color and the second figure -10%.

Similar to the brightness gradients but the following saturation gradients show a change of the HunterLab color 49.6189, 17.1291, 7.6912 by changing the saturation by 10% instead.

■ 49.6189, 17.1291,
7.6912

■ 49.6189, 17.1291,
7.6912

166.1168, 19.5646,
16.7420

■ 39.7433, 16.4531,
6.7573

■ 71.4441, 18.1756,
9.5931

■ 30.6258, 15.6613,
5.8271

■ 83.3104, 18.5714,
10.5644

■ 22.3371, 14.7337,
4.8929

■ 95.7693, 18.8924,
11.5513

■ 14.9703, 13.6511,
3.9388

108.7941, 19.1448,
12.5549

■ 8.6155, 12.6260,
3.7798

122.3610, 19.3340,
13.5754

0.0000, INF, NaN

0.0000, NaN, NaN

136.4491, 19.4646,

14.6134

0.0000, NaN, NaN

151.0400, 19.5403,
15.6689

0.0000, NaN, NaN

■ 49.6189, 17.1291,
7.6912

■ 49.6189, 17.1291,
7.6912

■ 45.0539, 24.0131,
9.3468

■ 54.6015, 10.4114,
6.2296

■ 40.9839, 30.9249,
11.1818

■ 59.9313, 3.9243,
4.9497

■ 37.5024, 37.5860,
13.1448

■ 65.5556, -2.3255,
3.8329

■ 34.7032, 43.5635,
15.1254

■ 71.4317, -8.3533,
2.8577

■ 32.6606, 48.3187,
16.9536

■ 77.5259, -14.1847,
2.0032

■ 31.3971, 51.3855,
18.4351

■ 83.8112, -19.8476,
1.2510

■ 30.8103, 52.8535,
19.2110

■ 90.2657, -25.3687,
0.5854

■ 93.9175, -27.1888,
-2.3302

Harmonies

Analogous

The Analogous color harmony consists of three colors that are next to each other on the color wheel.



49.6201, 17.4810, -1.6687



49.6189, 17.1291, 7.6912



49.6201, 11.2131, 14.2615

Triad

The Triadic color harmony groups three colors that are evenly spaced from another and form a triangle on the color wheel.



49.6201, 17.1270, 7.6921



49.6201, -15.8925, 13.6634



49.6201, -6.9732, -18.5983

Complementary

The Complementary color scheme is a pair of colors which are on the opposite of each other on the color wheel.



49.6189, 17.1291, 7.6912



62.4197, -19.3077, 0.0863

Split Complementary

Split-complementary colors differ from the complementary color scheme. The scheme consists of three colors, the original color and two neighbors of the complement color.



49.6201, -15.1411, -12.5533



49.6189, 17.1291, 7.6912



49.6201, -20.0091, 6.7061

Square

The Square scheme is like the rectangle color scheme, but the four colors are evenly spaced on the color wheel.



49.6201, 17.1270, 7.6921



49.6201, -8.0750, 17.2121



49.6201, -19.7453, -2.8694



49.6201, 3.0181, -18.1888

Rectangle

The Rectangle color scheme consists of four colors that form a rectangle on the color wheel.



49.6189, 17.1291, 7.6912



49.6201, 5.1610, 16.7365



49.6201, -19.7453, -2.8694



49.6201, -10.0063, -17.2099

Sweetspot

The Sweet Spot groups the original color and five complimentary colors.



49.6201, 17.1270, 7.6921



82.0767, 3.7065, 6.3720



50.7967, 24.1263, -17.4390



38.1466, 2.3031, 3.1028



95.4677, -5.0939, 5.1869



42.2927, -2.2566, 2.2978

Same Dimension

The Same Dimension uses a secret algorithm to generate beautiful new colors.



49.6201, 17.1270, 7.6921



62.6701, 29.2024, 11.8088



55.6964, 4.7644, 15.1454



29.1798, 1.0526, 2.2012



26.0688, 44.7340, 16.1452



4.6584, 8.0617, 2.3581

Inverse Universe

The Inverse Universe completely reimagines the original color for something new.



49.6201, 17.1270, 7.6921



62.6701, 29.2024, 11.8088



55.2033, -7.6234, -11.3550



29.1798, 1.0526, 2.2012



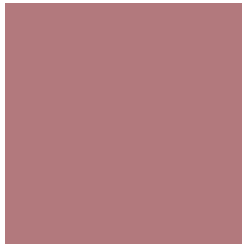
26.0688, 44.7340, 16.1452



4.6584, 8.0617, 2.3581

Previews

White Background



This preview shows how the HunterLab color 49.6189, 17.1291, 7.6912 looks on a white background.

Color Contrast Check

Large Text (above 18pt) WCAG AA ✓ Pass

Any Text WCAG AA ✗ Fail

Large Text (above 18pt) WCAG AAA ✗ Fail

Any Text WCAG AAA ✗ Fail

Black Background



This preview shows how the HunterLab color 49.6189, 17.1291, 7.6912 looks on a black background.

Color Contrast Check

Large Text (above 18pt) WCAG AA ✓ Pass

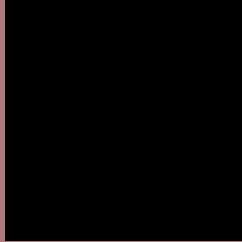
Any Text WCAG AA ✓ Pass

Large Text (above 18pt) WCAG AAA ✓ Pass

Any Text WCAG AAA × Fail

If you want to check with other color combinations, try the [Color Contrast Checker](#).

HunterLab 49.6189, 17.1291, 7.6912 Background



This preview shows how black text looks on a background with the HunterLab color 49.6189, 17.1291, 7.6912.



This preview shows how white text looks on a background with the HunterLab color 49.6189, 17.1291,

Color Blindness Simulation

Color vision deficiency is a very complex topic, and I could not describe the different causes any better than Wikipedia does, so if you want to learn more, you should check out their [article about color blindness](#).

Dichromacy



Original Color

49.6189, 17.1291, 7.6912

Protanopia

49.8771, -1.9197, 4.3223

Deuteranopia

49.5305, 3.4821, 8.1502



Tritanopia

49.4802, 18.1680, 5.9211

Trichromacy



Original Color

49.6189, 17.1291, 7.6912

Protanomaly

49.7135, 4.4604, 5.5240

Deuteranomaly

49.4171, 8.6331, 7.7233

Tritanomaly

49.4534, 18.0327, 6.3045

Monochromacy



Original Color

49.6189, 17.1291, 7.6912

Achromatopsia

50.8117, -2.7112, 2.7607

Achromatomaly

49.9961, 4.2317, 4.1345

CSS Examples

Text

The CSS property to change the color of the text to HunterLab 49.6189, 17.1291, 7.6912 is called "color". The color property can be set on classes, ids or directly on the HTML element.

This example shows how text in the color `rgb(178, 121, 125)` looks like.

```
.text, #text, p{  
    color:rgb(178, 121, 125)  
}
```

If you want to add a text shadow in that color use the text-shadow property, you can generate a text shadow directly with our [CSS Text Shadow Generator](#).

Here you see how black text with a 4 pixel rgb(178, 121, 125) colored shadow looks like.

```
.shadow{ text-shadow: 4px 4px 2px rgb(178, 121, 125) }
```

Border

The CSS property to change the border of an element to HunterLab 49.6189, 17.1291, 7.6912 is called "border". The border property can be set on classes, ids or directly on the HTML element.

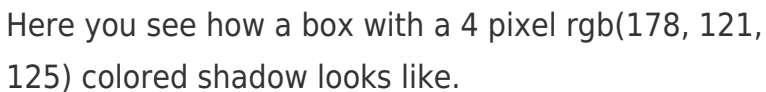
This example shows the color as border, it can be applied via the CSS property "border" or "border-color".

```
.border, #border, table{ border:4px solid rgb(178, 121, 125) }
```


If only the border color should be changed use the property `border-color`.

```
.border{ border-color:rgb(178, 121, 125) }
```

If you want to add a box shadow in that color use:



Here you see how a box with a 4 pixel `rgb(178, 121, 125)` colored shadow looks like.

```
.boxshadow{ -moz-box-shadow:4px 4px 4px 4px rgb(178, 121, 125); -webkit-box-shadow:4px 4px 4px 4px rgb(178, 121, 125); box-shadow:4px 4px 4px 4px rgb(178, 121, 125) }
```

Background

The CSS property to change the background color of an element to HunterLab 49.6189, 17.1291, 7.6912 is called "background". The background property can be set on classes, ids or directly on the HTML element.

```
.background, #background, body{  
background: rgb(178, 121, 125) }
```

If only the background color should be changed can be used:

```
.background{ background-color: rgb(178,  
121, 125) }
```

This example shows the color as background, it is applied via the CSS property "background".

To optimize and compress your CSS code, you can use our [online CSS compressor and optimizer](#) based on csstidy. If you want to create a linear or radial gradient as background or border, check our [CSS Gradient Generator](#).

Hey! You found this booklet interesting? Support Converting Colors with the new Membership Option!

The pro membership hides all ads, plus gives you double the colors in the color bucket, and more awesome pro features!

[Learn more, Memberships starting at \\$2.50/m!](#)

**Follow me
on Twitter!**

@ConvertingColor