

Converting Colors

HunterLab(49.6335, 6.8424,
15.0803)

Have a look what the booklet for
HunterLab(49.6335, 6.8424,
15.0803) contains.

HunterLab(49.5427, 6.7743, 14.9732)	3
<i>Conversions</i>	4
<i>Details</i>	6
<i>Harmonies</i>	12
<i>Previews</i>	24
<i>Color Blindness Simulation</i>	28
<i>CSS Examples</i>	31

Color

**HunterLab(49.5427, 6.7743,
14.9732)**

Conversions

Conversions Part 1

Format	Color
Hex	A68068
RGB	166, 128, 104
RGB Percent	65%, 50%, 41%
CMY	0.3490, 0.4980, 0.5922
CMYK	0.00, 0.23, 0.37, 0.35
HSL	23°, 26%, 53%
HSV	23°, 37%, 65%
XYZ	25.9437, 24.5448, 16.4669
YIQ	136.6260, 30.3520, 0.5920

Conversions

Conversions Part 2

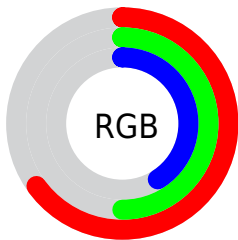
Format	Color
R_{YB}	166, 143, 104
Decimal	10911848
CIE _{Lab}	56.63, 11.28, 18.67
CIE _{LCh}	57, 21.811, 58.853
Yxy	24.5460, 0.3875, 0.3666
Android (android.graphics.Color)	4289101928 (0xFFA68068)
YUV	136.6260, -16.0846, 25.7610
Hunter-Lab	49.5427, 6.7743, 14.9732

Details

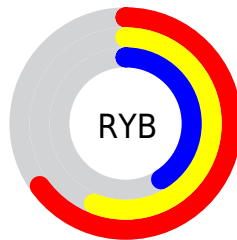
The HunterLab color $49.5427, 6.7743, 14.9732$ is a dark color, and the websafe version is hex 996666 . A complement of this color would be $50.0413, -8.1537, -12.0516$, and the grayscale version is $49.9215, -2.6637, 2.7123$.

A 20% lighter version of the original color is $71.3750, 6.5510, 18.3359$, and $30.6563, 6.5839, 11.5191$ is the 20% darker color. If you saturate the color by 10%, you get $46.6034, 10.0666, 17.3120$, and if you desaturate by 10%, it is $52.6361, 3.7447, 12.2681$.

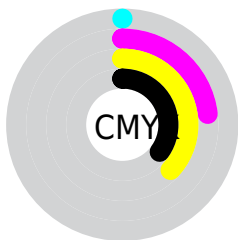
Distribution



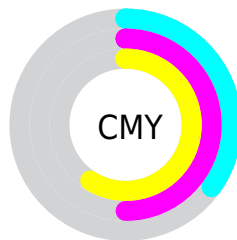
- Red (65%)
- Green (50%)
- Blue (41%)



- Red (65%)
- Yellow (56%)
- Blue (41%)



- Cyan (0%)
- Magenta (23%)
- Yellow (37%)
- Black (35%)



- Cyan (35%)
- Magenta (50%)
- Yellow (59%)

Brightness & Saturation Gradients

These gradients show how the HunterLab color 49.5427, 6.7743, 14.9732 changes by changing the brightness by 10 percent. The first figure shows a shift by +10% for each color and the second figure -10%.

Similar to the brightness gradients but the following saturation gradients show a change of the HunterLab color 49.5427, 6.7743, 14.9732 by changing the saturation by 10% instead.

■ 49.5427, 6.7743,
14.9732

■ 49.5427, 6.7743,
14.9732

166.0027, 4.9514,
29.0459

■ 39.6725, 6.6770,
13.2779

■ 71.3580, 6.7436,
18.2228

■ 30.5610, 6.4942,
11.5063

■ 83.2198, 6.6350,
19.8019

■ 22.2788, 6.2081,
9.6234

■ 95.6745, 6.4710,
21.3622

■ 14.9192, 5.7956,
7.6633

■ 108.6951, 6.2560,
22.9095

■ 8.5675, 5.4248,
5.9972

122.2580, 5.9937,
24.4485

0.0000, NaN, NaN

0.0000, NaN, NaN

136.3424, 5.6871,

25.9824

0.0000, NaN, NaN

150.9295, 5.3389,
27.5142

0.0000, NaN, NaN

■ 49.5427, 6.7743,
14.9732

■ 49.5427, 6.7743,
14.9732

■ 46.6034, 10.0666,
17.3120

■ 52.6361, 3.7447,
12.2681

■ 43.8320, 13.6328,
19.2294

■ 55.8649, 0.9704,
9.2425

■ 41.2486, 17.4622,
20.6707

■ 59.2168, -1.5682,
5.9390

■ 38.8733, 21.5256,
21.5848

■ 62.6800, -3.8907,
2.3932

■ 36.7264, 25.7644,
21.9362

■ 66.2443, -6.0168,
-1.3646

■ 34.8235, 30.0685,
21.7693

■ 69.9009, -7.9653,
-5.3092

■ 34.3571, 31.1820,
21.7166

■ 73.6421, -9.7540,
-9.4194

■ 77.4612, -11.3990,
-13.6774

■ 81.3522, -12.9148,
-18.0685

Harmonies

Analogous

The Analogous color harmony consists of three colors that are next to each other on the color wheel.



49.5439, 13.6995, 10.1028



49.5427, 6.7743, 14.9732



49.5439, -2.2940, 16.6651

Triad

The Triadic color harmony groups three colors that are evenly spaced from another and form a triangle on the color wheel.



49.5439, 6.7723, 14.9739



49.5439, -19.0162, 3.0302



49.5439, 6.1200, -14.2877

Complementary

The Complementary color scheme is a pair of colors which are on the opposite of each other on the color wheel.



49.5427, 6.7743, 14.9732



50.0413, -8.1537, -12.0516

Split Complementary

Split-complementary colors differ from the complementary color scheme. The scheme consists of three colors, the original color and two neighbors of the complement color.



49.5439, -2.9974, -17.0910



49.5427, 6.7743, 14.9732



49.5439, -17.1140, -6.0649

Square

The Square scheme is like the rectangle color scheme, but the four colors are evenly spaced on the color wheel.



49.5439, 6.7723, 14.9739



49.5439, -16.8034, 10.5857



49.5439, -11.4098, -13.8446



49.5439, 13.3041, -6.7497

Rectangle

The Rectangle color scheme consists of four colors that form a rectangle on the color wheel.



49.5427, 6.7743, 14.9732



49.5439, -8.1965, 16.0490



49.5439, -11.4098, -13.8446



49.5439, 3.1597, -15.8693

Sweetspot

The Sweet Spot groups the original color and five complimentary colors.



49.5439, 6.7723, 14.9739



78.0164, -0.8300, 9.7579



44.6854, 23.9677, -6.1229



36.6289, -0.1841, 4.8899



92.0917, -4.9138, 5.0035



39.3538, -2.0998, 2.1382

Same Dimension

The Same Dimension uses a secret algorithm to generate beautiful new colors.



49.5439, 6.7723, 14.9739



63.3686, 12.8668, 22.8806



58.1572, -7.9087, 22.3457



28.2857, -0.5273, 3.1892



30.3951, 27.0917, 19.2036



5.6957, 2.0176, 3.5450

Inverse Universe

The Inverse Universe completely reimagines the original color for something new.



50.0413, -8.1537, -12.0516



64.1631, -11.4487, -21.1659



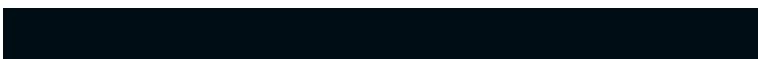
41.3719, 6.5635, -26.0929



28.3495, -2.3885, -0.1791



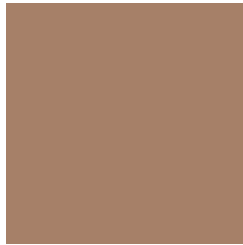
30.9122, -1.8510, -34.6418



5.7204, -1.6635, -3.5590

Previews

White Background



This preview shows how the HunterLab color 49.5427, 6.7743, 14.9732 looks on a white background.

Color Contrast Check

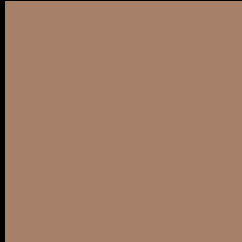
Large Text (above 18pt) WCAG AA ✓ Pass

Any Text WCAG AA × Fail

Large Text (above 18pt) WCAG AAA × Fail

Any Text WCAG AAA × Fail

Black Background



This preview shows how the HunterLab color 49.5427, 6.7743, 14.9732 looks on a black background.

Color Contrast Check

Large Text (above 18pt) WCAG AA ✓ Pass

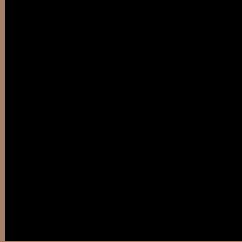
Any Text WCAG AA ✓ Pass

Large Text (above 18pt) WCAG AAA ✓ Pass

Any Text WCAG AAA × Fail

If you want to check with other color combinations, try the [Color Contrast Checker](#).

HunterLab 49.5427, 6.7743, 14.9732 Background



This preview shows how black text looks on a background with the HunterLab color 49.5427, 6.7743, 14.9732.



This preview shows how white text looks on a background with the HunterLab color 49.5427, 6.7743,

Color Blindness Simulation

Color vision deficiency is a very complex topic, and I could not describe the different causes any better than Wikipedia does, so if you want to learn more, you should check out their [article about color blindness](#).

Dichromacy



Original Color

49.5427, 6.7743, 14.9732

Protanopia

49.7099, -3.7282, 13.6442

Deuteranopia

49.7048, 3.1996, 15.0616



Tritanopia

49.5417, 13.4787, 4.2066

Trichromacy



Original Color

49.5427, 6.7743, 14.9732

Protanomaly

49.6074, 0.1866, 13.9462

Deuteranomaly

49.6449, 4.3821, 15.0265

Tritanomaly

49.3935, 11.1165, 8.5292

Monochromacy



Original Color

49.5427, 6.7743, 14.9732

Achromatopsia

50.0158, -2.6687, 2.7175

Achromatomaly

49.8265, 0.3566, 7.6220

CSS Examples

Text

The CSS property to change the color of the text to HunterLab 49.5427, 6.7743, 14.9732 is called "color". The color property can be set on classes, ids or directly on the HTML element.

This example shows how text in the color `rgb(166, 128, 104)` looks like.

```
.text, #text, p{  
    color:rgb(166, 128, 104)  
}
```

If you want to add a text shadow in that color use the text-shadow property, you can generate a text shadow directly with our [CSS Text Shadow Generator](#).

Here you see how black text with a 4 pixel rgb(166, 128, 104) colored shadow looks like.

```
.shadow{ text-shadow: 4px 4px 2px rgb(166, 128, 104) }
```

Border

The CSS property to change the border of an element to HunterLab 49.5427, 6.7743, 14.9732 is called "border". The border property can be set on classes, ids or directly on the HTML element.

This example shows the color as border, it can be applied via the CSS property "border" or "border-color".

```
.border, #border, table{ border:4px solid rgb(166, 128, 104) }
```


If only the border color should be changed use the property `border-color`.

```
.border{ border-color:rgb(166, 128, 104) }
```

If you want to add a box shadow in that color use:

Here you see how a box with a 4 pixel `rgb(166, 128, 104)` colored shadow looks like.

```
.boxshadow{ -moz-box-shadow:4px 4px 4px  
4px rgb(166, 128, 104); -webkit-box-  
shadow:4px 4px 4px 4px rgb(166, 128, 104);  
box-shadow:4px 4px 4px 4px rgb(166, 128,  
104) }
```

Background

The CSS property to change the background color of an element to HunterLab 49.5427, 6.7743, 14.9732 is called "background". The background property can be set on classes, ids or directly on the HTML element.

```
.background, #background, body{  
background: rgb(166, 128, 104) }
```

If only the background color should be changed can be used:

```
.background{ background-color: rgb(166,  
128, 104) }
```

This example shows the color as background, it is applied via the CSS property "background".

To optimize and compress your CSS code, you can use our [online CSS compressor and optimizer](#) based on csstidy. If you want to create a linear or radial gradient as background or border, check our [CSS Gradient Generator](#).

Hey! You found this booklet interesting? Support Converting Colors with the new Membership Option!

The pro membership hides all ads, plus gives you double the colors in the color bucket, and more awesome pro features!

[Learn more, Memberships starting at \\$2.50/m!](#)

**Follow me
on Twitter!**

@ConvertingColor