

Converting Colors

HunterLab(49.6832, 10.7488,
22.0651)

Have a look what the booklet for
HunterLab(49.6832, 10.7488,
22.0651) contains.

HunterLab(49.8151, 10.7728, 22.0804)	3
<i>Conversions</i>	4
<i>Details</i>	6
<i>Harmonies</i>	12
<i>Previews</i>	24
<i>Color Blindness Simulation</i>	28
<i>CSS Examples</i>	31

Color

**HunterLab(49.8151, 10.7728,
22.0804)**

Conversions

Conversions Part 1

Format	Color
Hex	B37D4F
RGB	179, 125, 79
RGB Percent	70%, 49%, 31%
CMY	0.2980, 0.5098, 0.6902
CMYK	0.00, 0.30, 0.56, 0.30
HSL	28°, 40%, 51%
HSV	28°, 56%, 70%
XYZ	27.3353, 24.8154, 10.7462
YIQ	135.9020, 46.9500, -2.8580

Conversions

Conversions Part 2

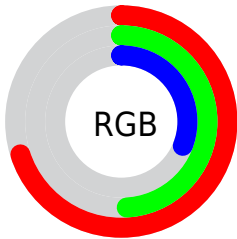
Format	Color
R_{YB}	179, 164, 79
Decimal	11763023
CIE _{Lab}	56.90, 15.83, 33.26
CIE _{LCh}	57, 36.832, 64.541
Yxy	24.8167, 0.4346, 0.3945
Android (android.graphics.Color)	4289953103 (0xFFB37D4F)
YUV	135.9020, -28.0527, 37.7969
Hunter-Lab	49.8151, 10.7728, 22.0804

Details

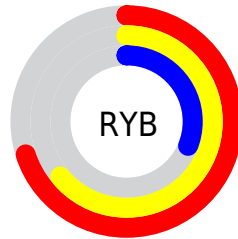
The HunterLab color **49.8151, 10.7728, 22.0804** is a dark color, and the websafe version is hex **996633**. A complement of this color would be **46.5735, -5.8158, -25.6956**, and the grayscale version is **49.6754, -2.6506, 2.6990**.

A 20% lighter version of the original color is **71.7149, 10.9169, 27.2109**, and **30.7963, 9.9426, 16.5198** is the 20% darker color. If you saturate the color by 10%, you get **47.1813, 14.3032, 23.7574**, and if you desaturate by 10%, it is **52.6127, 7.5429, 19.8344**.

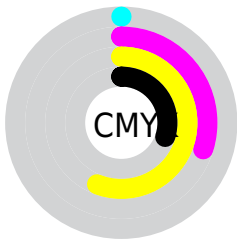
Distribution



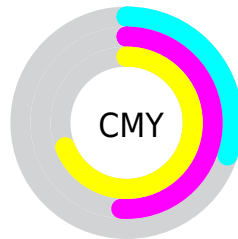
- Red (70%)
- Green (49%)
- Blue (31%)



- Red (70%)
- Yellow (64%)
- Blue (31%)



- Cyan (0%)
- Magenta (30%)
- Yellow (56%)
- Black (30%)



- Cyan (30%)
- Magenta (51%)
- Yellow (69%)

Brightness & Saturation Gradients

These gradients show how the HunterLab color 49.8151, 10.7728, 22.0804 changes by changing the brightness by 10 percent. The first figure shows a shift by +10% for each color and the second figure -10%.

Similar to the brightness gradients but the following saturation gradients show a change of the HunterLab color 49.8151, 10.7728, 22.0804 by changing the saturation by 10% instead.

■ 49.8151, 10.7728,
22.0804

■ 49.8151, 10.7728,
22.0804

166.4102, 10.6449,
42.8794

■ 39.9256, 10.4420,
19.3575

■ 71.6656, 11.1732,
27.1498

■ 30.7930, 10.0122,
16.4566

■ 83.5436, 11.2657,
29.5472

■ 22.4876, 9.4631,
13.3234

■ 96.0136, 11.2948,
31.8771

■ 15.1020, 8.7703,
10.5714

■ 109.0490, 11.2657,
34.1524

■ 8.7377, 8.0416,
6.1164

■ 122.6260, 11.1827,
36.3830

0.0000, INF, NaN

0.0000, NaN, NaN

136.7240, 11.0495,

38.5770

0.0000, NaN, NaN

151.3243, 10.8693,
40.7407

0.0000, NaN, NaN

■ 49.8151, 10.7728,
22.0804

■ 49.8151, 10.7728,
22.0804

■ 47.1813, 14.3032,
23.7574

■ 52.6127, 7.5429,
19.8344

■ 44.7221, 18.1291,
24.8192

■ 55.5564, 4.6189,
17.0687

■ 42.4530, 22.2155,
25.2399

■ 58.6347, 1.9876,
13.8362

■ 40.3863, 26.4989,
25.0378

■ 61.8357, -0.3671,
10.1862

■ 39.5864, 28.2738,
24.8879

■ 65.1489, -2.4643,
6.1639

■ 68.5648, -4.3238,
1.8096

■ 72.0750, -5.9655,
-2.8413

■ 75.6722, -7.4084,
-7.7578

■ 79.3497, -8.6703,
-12.9133

Harmonies

Analogous

The Analogous color harmony consists of three colors that are next to each other on the color wheel.



49.8163, 24.2622, 16.2267



49.8151, 10.7728, 22.0804



49.8163, -4.9922, 23.4647

Triad

The Triadic color harmony groups three colors that are evenly spaced from another and form a triangle on the color wheel.



49.8163, 10.7704, 22.0810



49.8163, -28.9623, 0.4207



49.8163, 15.3366, -26.6526

Complementary

The Complementary color scheme is a pair of colors which are on the opposite of each other on the color wheel.



49.8151, 10.7728, 22.0804



46.5735, -5.8158, -25.6956

Split Complementary

Split-complementary colors differ from the complementary color scheme. The scheme consists of three colors, the original color and two neighbors of the complement color.



49.8163, -0.2856, -34.5093



49.8151, 10.7728, 22.0804



49.8163, -24.8556, -16.1310

Square

The Square scheme is like the rectangle color scheme, but the four colors are evenly spaced on the color wheel.



49.8163, 10.7704, 22.0810



49.8163, -26.7567, 13.3988



49.8163, -14.8042, -30.1673



49.8163, 27.1158, -11.0377

Rectangle

The Rectangle color scheme consists of four colors that form a rectangle on the color wheel.



49.8151, 10.7728, 22.0804



49.8163, -14.4145, 22.1842



49.8163, -14.8042, -30.1673



49.8163, 10.2951, -30.4739

Sweetspot

The Sweet Spot groups the original color and five complimentary colors.



49.8163, 10.7704, 22.0810



82.1346, -0.0648, 14.3583



41.1060, 39.6193, -6.5088



38.2576, 0.2540, 7.2255



95.4677, -5.0939, 5.1869



42.2927, -2.2566, 2.2978

Same Dimension

The Same Dimension uses a secret algorithm to generate beautiful new colors.



49.8163, 10.7704, 22.0810



62.3743, 20.2688, 32.1899



63.5769, -12.6062, 32.0565



30.2126, -0.8346, 3.5847



33.4681, 23.3058, 21.0309



6.8524, 2.1159, 4.2595

Inverse Universe

The Inverse Universe completely reimagines the original color for something new.



46.5735, -5.8158, -25.6956



57.1956, -5.6513, -44.0333



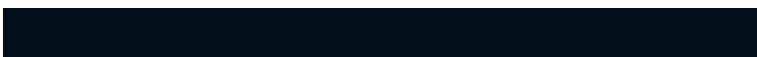
33.5526, 18.5910, -54.3611



29.9414, -2.2639, -0.4144



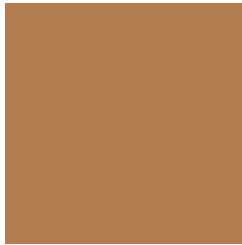
29.0300, 3.3902, -43.6034



6.1665, -1.0984, -5.3366

Previews

White Background



This preview shows how the HunterLab color 49.8151, 10.7728, 22.0804 looks on a white background.

Color Contrast Check

Large Text (above 18pt) WCAG AA ✓ Pass

Any Text WCAG AA × Fail

Large Text (above 18pt) WCAG AAA × Fail

Any Text WCAG AAA × Fail

Black Background



This preview shows how the HunterLab color 49.8151, 10.7728, 22.0804 looks on a black background.

Color Contrast Check

Large Text (above 18pt) WCAG AA ✓ Pass

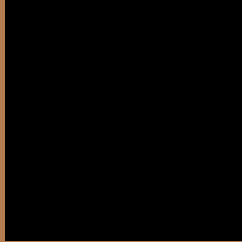
Any Text WCAG AA ✓ Pass

Large Text (above 18pt) WCAG AAA ✓ Pass

Any Text WCAG AAA × Fail

If you want to check with other color combinations, try the [Color Contrast Checker](#).

HunterLab 49.8151, 10.7728, 22.0804 Background



This preview shows how black text looks on a background with the HunterLab color 49.8151, 10.7728, 22.0804.



This preview shows how white text looks on a background with the HunterLab color 49.8151, 10.7728,

Color Blindness Simulation

Color vision deficiency is a very complex topic, and I could not describe the different causes any better than Wikipedia does, so if you want to learn more, you should check out their [article about color blindness](#).

Dichromacy



Original Color

49.8151, 10.7728, 22.0804

Protanopia

49.9999, -5.0873, 21.0165

Deuteranopia

49.9981, 3.2838, 22.3189



Tritanopia

49.8191, 20.3826, 6.7507

Trichromacy



Original Color

49.8151, 10.7728, 22.0804

Protanomaly

49.9613, 0.4880, 21.3213

Deuteranomaly

49.9084, 5.7221, 22.2909

Tritanomaly

49.7450, 16.8034, 13.3644

Monochromacy



Original Color

49.8151, 10.7728, 22.0804

Achromatopsia

49.6187, -2.6475, 2.6959

Achromatomaly

49.4123, 1.2921, 11.0082

CSS Examples

Text

The CSS property to change the color of the text to HunterLab 49.8151, 10.7728, 22.0804 is called "color". The color property can be set on classes, ids or directly on the HTML element.

This example shows how text in the color `rgb(179, 125, 79)` looks like.

```
.text, #text, p{  
    color:rgb(179, 125, 79)  
}
```

If you want to add a text shadow in that color use the text-shadow property, you can generate a text shadow directly with our [CSS Text Shadow Generator](#).

Here you see how black text with a 4 pixel rgb(179, 125, 79) colored shadow looks like.

```
.shadow{ text-shadow: 4px 4px 2px rgb(179, 125, 79) }
```

Border

The CSS property to change the border of an element to HunterLab 49.8151, 10.7728, 22.0804 is called "border". The border property can be set on classes, ids or directly on the HTML element.

This example shows the color as border, it can be applied via the CSS property "border" or "border-color".

```
.border, #border, table{ border:4px solid rgb(179, 125, 79) }
```


If only the border color should be changed use the property border-color.

```
.border{ border-color:rgb(179, 125, 79) }
```

If you want to add a box shadow in that color use:

Here you see how a box with a 4 pixel rgb(179, 125, 79) colored shadow looks like.

```
.boxshadow{ -moz-box-shadow:4px 4px 4px  
4px rgb(179, 125, 79); -webkit-box-  
shadow:4px 4px 4px 4px rgb(179, 125, 79);  
box-shadow:4px 4px 4px 4px rgb(179, 125,  
79) }
```

Background

The CSS property to change the background color of an element to HunterLab 49.8151, 10.7728, 22.0804 is called "background". The background property can be set on classes, ids or directly on the HTML element.

```
.background, #background, body{  
background: rgb(179, 125, 79) }
```

If only the background color should be changed can be used:

```
.background{ background-color: rgb(179,  
125, 79) }
```

This example shows the color as background, it is applied via the CSS property "background".

To optimize and compress your CSS code, you can use our [online CSS compressor and optimizer](#) based on csstidy. If you want to create a linear or radial gradient as background or border, check our [CSS Gradient Generator](#).

Hey! You found this booklet interesting? Support Converting Colors with the new Membership Option!

The pro membership hides all ads, plus gives you double the colors in the color bucket, and more awesome pro features!

[Learn more, Memberships starting at \\$2.50/m!](#)

**Follow me
on Twitter!**

@ConvertingColor