

Converting Colors

HunterLab(49.6941, 75.0056,
15.2475)

Have a look what the booklet for
HunterLab(49.6941, 75.0056,
15.2475) contains.

HunterLab(49.6882, 74.9827, 15.3325)	3
<i>Conversions</i>	4
<i>Details</i>	6
<i>Harmonies</i>	12
<i>Previews</i>	24
<i>Color Blindness Simulation</i>	28
<i>CSS Examples</i>	31

Color

**HunterLab(49.6882, 74.9827,
15.3325)**

Conversions

Conversions Part 1

Format	Color
Hex	FF336B
RGB	255, 51, 107
RGB Percent	100%, 20%, 42%
CMY	0.0000, 0.7999, 0.5804
CMYK	0.00, 0.80, 0.58, 0.00
HSL	344°, 100%, 60%
HSV	344°, 80%, 100%
XYZ	45.0777, 24.6892, 16.2995
YIQ	118.3800, 103.6080, 60.6640

Conversions

Conversions Part 2

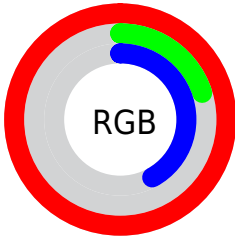
Format	Color
R_{YB}	255, 51, 107
Decimal	16724843
CIE _{Lab}	56.77, 76.25, 19.28
CIE _{LCh}	57, 78.647, 14.187
Yxy	24.6906, 0.5237, 0.2869
Android (android.graphics.Color)	4294914923 (0xFFFF336B)
YUV	118.3800, -5.6103, 119.8157
Hunter-Lab	49.6882, 74.9827, 15.3325

Details

The HunterLab color **49.6882, 74.9827, 15.3325** is a dark color, and the websafe version is hex **FF3366**. The color can be described as middle washed rose. A complement of this color would be **87.3775, -56.0040, 16.1902**, and the grayscale version is **42.7067, -2.2787, 2.3203**.

A 20% lighter version of the original color is **60.5685, 52.8228, 6.5819**, and **33.7678, 58.7944, 14.3308** is the 20% darker color. If you saturate the color by 10%, you get **47.6344, 79.2002, 19.1117**, and if you desaturate by 10%, it is **52.9093, 67.9761, 11.8618**.

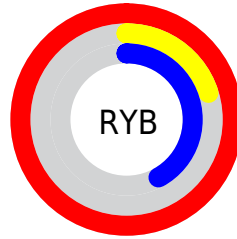
Distribution



Red (100%)

Green (20%)

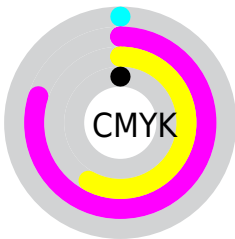
Blue (42%)



Red (100%)

Yellow (20%)

Blue (42%)

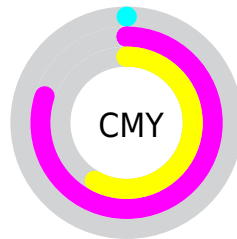


Cyan (0%)

Magenta (80%)

Yellow (58%)

Black (0%)



Cyan (0%)

Magenta (80%)

Yellow (58%)

Brightness & Saturation Gradients

These gradients show how the HunterLab color 49.6882, 74.9827, 15.3325 changes by changing the brightness by 10 percent. The first figure shows a shift by +10% for each color and the second figure -10%.

Similar to the brightness gradients but the following saturation gradients show a change of the HunterLab color 49.6882, 74.9827, 15.3325 by changing the saturation by 10% instead.

49.6882, 74.9827,
15.3325

49.6882, 74.9827,
15.3325

166.2209, 93.4188,
29.6742

39.8079, 72.5723,
13.5972

71.5227, 79.6689,
18.6546

30.6851, 70.2222,
11.7810

83.3931, 81.9000,
20.2662

22.3905, 68.1149,
9.8485

95.8560, 84.0419,
21.8571

15.0170, 66.7285,
7.8500

108.8845, 86.0927,
23.4336

8.6590, 68.0012,
6.0613

122.4550, 88.0532,
25.0003

0.0000, INF, NaN

0.0000, INF, NaN

136.5466, 89.9258,

26.5607

0.0000, NaN, NaN

151.1408, 91.7132,
28.1179

0.0000, NaN, NaN

■ 49.6882, 74.9827,
15.3325

■ 49.6882, 74.9827,
15.3325

■ 47.6344, 79.2002,
19.1117

■ 52.9093, 67.9761,
11.8618

■ 46.5859, 80.7267,
22.7453

■ 57.2537, 58.8938,
8.9851

■ 46.5853, 80.7275,
22.7476

■ 62.6093, 48.5586,
6.8363

■ 68.8364, 37.6508,
5.4195

■ 75.7985, 26.6192,
4.6657

■ 83.3765, 15.7134,
4.4789

■ 91.4719, 5.0476,
4.7630

99.9999, -5.3359,
5.4331

Harmonies

Analogous

The Analogous color harmony consists of three colors that are next to each other on the color wheel.



49.6897, 74.2587, -16.7003



49.6882, 74.9827, 15.3325



49.6897, 51.4809, 29.0550

Triad

The Triadic color harmony groups three colors that are evenly spaced from another and form a triangle on the color wheel.



49.6897, 74.9775, 15.3337



49.6897, -39.5775, 29.4304



49.6897, -18.7798, -97.3723

Complementary

The Complementary color scheme is a pair of colors which are on the opposite of each other on the color wheel.



49.6882, 74.9827, 15.3325



87.3775, -56.0040, 16.1902

Split Complementary

Split-complementary colors differ from the complementary color scheme. The scheme consists of three colors, the original color and two neighbors of the complement color.



49.6897, -40.4389, -60.3825



49.6882, 74.9827, 15.3325



49.6897, -50.1304, 16.4945

Square

The Square scheme is like the rectangle color scheme, but the four colors are evenly spaced on the color wheel.



49.6897, 74.9775, 15.3337



49.6897, -17.2596, 32.8460



49.6897, -50.3979, -14.4664



49.6897, 13.8616, -98.5144

Rectangle

The Rectangle color scheme consists of four colors that form a rectangle on the color wheel.



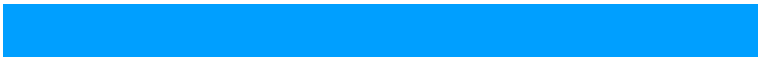
49.6882, 74.9827, 15.3325



49.6897, 28.0817, 32.1290



49.6897, -50.3979, -14.4664



49.6897, -27.3606, -88.0016

Sweetspot

The Sweet Spot groups the original color and five complimentary colors.



49.6897, 74.9775, 15.3337



80.2730, 20.0587, 4.4920



46.3542, 81.8225, -91.0131



35.8956, 11.0811, 2.1152

0.0000, NaN, NaN



46.2646, -2.4686, 2.5136

Same Dimension

The Same Dimension uses a secret algorithm to generate beautiful new colors.



49.6897, 74.9775, 15.3337



46.9284, 80.3070, 21.3619



54.5179, 55.0383, 31.1489



42.5076, 2.0974, 2.2149



33.7063, 58.4718, 15.9766



10.6003, 18.5500, 3.7753

Inverse Universe

The Inverse Universe completely reimagines the original color for something new.



49.6897, 74.9775, 15.3337



46.9284, 80.3070, 21.3619



73.7666, -25.8596, -31.0388



42.5076, 2.0974, 2.2149



33.7063, 58.4718, 15.9766



10.6003, 18.5500, 3.7753

Previews

White Background



This preview shows how the HunterLab color 49.6882, 74.9827, 15.3325 looks on a white background.

Color Contrast Check

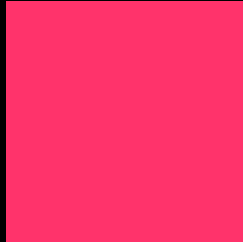
Large Text (above 18pt) WCAG AA ✓ Pass

Any Text WCAG AA × Fail

Large Text (above 18pt) WCAG AAA × Fail

Any Text WCAG AAA × Fail

Black Background



This preview shows how the HunterLab color 49.6882, 74.9827, 15.3325 looks on a black background.

Color Contrast Check

Large Text (above 18pt) WCAG AA ✓ Pass

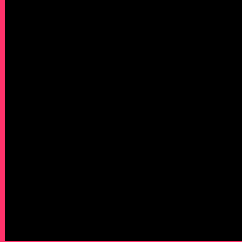
Any Text WCAG AA ✓ Pass

Large Text (above 18pt) WCAG AAA ✓ Pass

Any Text WCAG AAA × Fail

If you want to check with other color combinations, try the [Color Contrast Checker](#).

HunterLab 49.6882, 74.9827, 15.3325 Background



This preview shows how black text looks on a background with the HunterLab color 49.6882, 74.9827, 15.3325.



This preview shows how white text looks on a background with the HunterLab color 49.6882, 74.9827,

Color Blindness Simulation

Color vision deficiency is a very complex topic, and I could not describe the different causes any better than Wikipedia does, so if you want to learn more, you should check out their [article about color blindness](#).

Dichromacy



Original Color

49.6882, 74.9827, 15.3325

Protanopia

49.9491, -0.8433, -2.0022

Deuteranopia

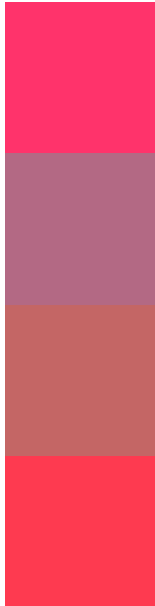
49.7765, 3.1666, 17.2568



Tritanopia

49.6971, 68.0360, 26.0275

Trichromacy



Original Color

49.6882, 74.9827, 15.3325

Protanomaly

46.2091, 26.5485, 0.9292

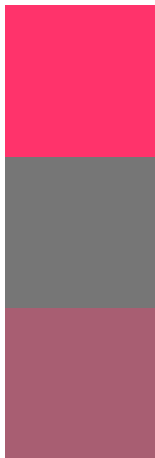
Deuteranomaly

47.0936, 30.7852, 14.0573

Tritanomaly

49.6751, 70.5799, 22.7868

Monochromacy



Original Color

49.6882, 74.9827, 15.3325

Achromatopsia

42.5634, -2.2711, 2.3126

Achromatomaly

41.8869, 25.5147, 3.7234

CSS Examples

Text

The CSS property to change the color of the text to HunterLab 49.6882, 74.9827, 15.3325 is called "color". The color property can be set on classes, ids or directly on the HTML element.

This example shows how text in the color `rgb(255, 51, 107)` looks like.

```
.text, #text, p{  
    color:rgb(255, 51, 107)  
}
```

If you want to add a text shadow in that color use the text-shadow property, you can generate a text shadow directly with our [CSS Text Shadow Generator](#).

Here you see how black text with a 4 pixel rgb(255, 51, 107) colored shadow looks like.

```
.shadow{ text-shadow: 4px 4px 2px rgb(255, 51, 107) }
```

Border

The CSS property to change the border of an element to HunterLab 49.6882, 74.9827, 15.3325 is called "border". The border property can be set on classes, ids or directly on the HTML element.

This example shows the color as border, it can be applied via the CSS property "border" or "border-color".

```
.border, #border, table{ border:4px solid rgb(255, 51, 107) }
```


If only the border color should be changed use the property border-color.

```
.border{ border-color:rgb(255, 51, 107) }
```

If you want to add a box shadow in that color use:

Here you see how a box with a 4 pixel rgb(255, 51, 107) colored shadow looks like.

```
.boxshadow{ -moz-box-shadow:4px 4px 4px  
4px rgb(255, 51, 107); -webkit-box-  
shadow:4px 4px 4px 4px rgb(255, 51, 107);  
box-shadow:4px 4px 4px 4px rgb(255, 51,  
107) }
```

Background

The CSS property to change the background color of an element to HunterLab 49.6882, 74.9827, 15.3325 is called "background". The background property can be set on classes, ids or directly on the HTML element.

```
.background, #background, body{  
background: rgb(255, 51, 107) }
```

If only the background color should be changed can be used:

```
.background{ background-color: rgb(255, 51,  
107) }
```

This example shows the color as background, it is applied via the CSS property "background".

To optimize and compress your CSS code, you can use our [online CSS compressor and optimizer](#) based on csstidy. If you want to create a linear or radial gradient as background or border, check our [CSS Gradient Generator](#).

Hey! You found this booklet interesting? Support Converting Colors with the new Membership Option!

The pro membership hides all ads, plus gives you double the colors in the color bucket, and more awesome pro features!

[Learn more, Memberships starting at \\$2.50/m!](#)

**Follow me
on Twitter!**

@ConvertingColor