

Converting Colors

HunterLab(49.7542, 13.9506,
6.4625)

Have a look what the booklet for
HunterLab(49.7542, 13.9506,
6.4625) contains.

HunterLab(49.7438, 13.8437, 6.5531)	3
<i>Conversions</i>	4
<i>Details</i>	6
<i>Harmonies</i>	12
<i>Previews</i>	24
<i>Color Blindness Simulation</i>	28
<i>CSS Examples</i>	31

Color

**HunterLab(49.7438, 13.8437,
6.5531)**

Conversions

Conversions Part 1

Format	Color
Hex	AC7C80
RGB	172, 124, 128
RGB Percent	67%, 49%, 50%
CMY	0.3255, 0.5137, 0.4980
CMYK	0.00, 0.28, 0.26, 0.33
HSL	355°, 22%, 58%
HSV	355°, 28%, 67%
XYZ	28.1172, 24.7445, 23.7162
YIQ	138.8080, 27.3240, 11.4200

Conversions

Conversions Part 2

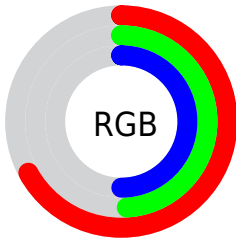
Format	Color
R_{YB}	172, 124, 128
Decimal	11304064
CIE Lab	56.83, 19.25, 5.23
CIE LCh	57, 19.948, 15.192
Yxy	24.7456, 0.3672, 0.3231
Android (android.graphics.Color)	4289494144 (0xFFAC7C80)
YUV	138.8080, -5.3283, 29.1094
Hunter-Lab	49.7438, 13.8437, 6.5531

Details

The HunterLab color **49.7438, 13.8437, 6.5531** is a dark color, and the websafe version is hex **996666**. A complement of this color would be **60.5127, -17.0093, 0.6908**, and the grayscale version is **50.7490, -2.7078, 2.7573**.

A 20% lighter version of the original color is **71.6062, 14.4295, 8.1791**, and **30.8522, 12.7466, 5.0188** is the 20% darker color. If you saturate the color by 10%, you get **45.1889, 20.4152, 8.0006**, and if you desaturate by 10%, it is **54.6693, 7.4557, 5.3023**.

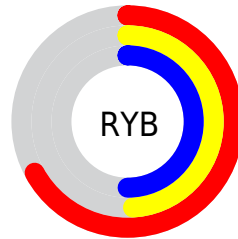
Distribution



Red (67%)

Green (49%)

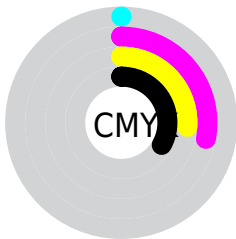
Blue (50%)



Red (67%)

Yellow (49%)

Blue (50%)

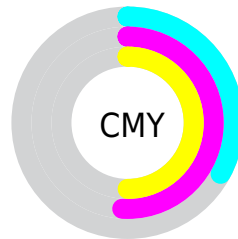


Cyan (0%)

Magenta (28%)

Yellow (26%)

Black (33%)



Cyan (33%)

Magenta (51%)

Yellow (50%)

Brightness & Saturation Gradients

These gradients show how the HunterLab color 49.7438, 13.8437, 6.5531 changes by changing the brightness by 10 percent. The first figure shows a shift by +10% for each color and the second figure -10%.

Similar to the brightness gradients but the following saturation gradients show a change of the HunterLab color 49.7438, 13.8437, 6.5531 by changing the saturation by 10% instead.

■ 49.7438, 13.8437,
6.5531

■ 49.7438, 13.8437,
6.5531

166.3035, 14.9771,
14.9387

■ 39.8593, 13.3422,
5.7181

■ 71.5851, 14.5634,
8.2785

■ 30.7322, 12.7323,
4.8966

■ 83.4588, 14.8053,
9.1697

■ 22.4329, 11.9936,
4.0842

■ 95.9248, 14.9779,
10.0808

■ 15.0541, 11.1031,
3.2712

108.9563, 15.0872,
11.0121

■ 8.6934, 10.2054,
2.9657

122.5296, 15.1379,
11.9637

0.0000, INF, NaN

0.0000, NaN, NaN

136.6241, 15.1342,

12.9354

0.0000, NaN, NaN

151.2209, 15.0796,
13.9271

0.0000, NaN, NaN

■ 49.7438, 13.8437,
6.5531

■ 49.7438, 13.8437,
6.5531

■ 45.1889, 20.4152,
8.0006

■ 54.6693, 7.4557,
5.3023

■ 41.0726, 27.0764,
9.6455

■ 59.9037, 1.2906,
4.2280

■ 37.4799, 33.6180,
11.4629

■ 65.4015, -4.6558,
3.3089

■ 34.5012, 39.6897,
13.3786

■ 71.1259, -10.4025,
2.5227

■ 32.2185, 44.8078,
15.2571

■ 77.0476, -15.9747,
1.8494

■ 30.6788, 48.4706,
16.9158

■ 83.1429, -21.3984,
1.2714

■ 29.8184, 50.5331,
18.1524

■ 89.3929, -26.6978,
0.7742

■ 29.6703, 50.9212,
18.3209

■ 93.5177, -28.7361,
-2.4017

■ 93.5472, -28.5675,
-2.8190

Harmonies

Analogous

The Analogous color harmony consists of three colors that are next to each other on the color wheel.



49.7450, 13.8732, -1.3649



49.7438, 13.8437, 6.5531



49.7450, 9.1970, 12.3886

Triad

The Triadic color harmony groups three colors that are evenly spaced from another and form a triangle on the color wheel.



49.7450, 13.8417, 6.5540



49.7450, -13.5650, 12.3313



49.7450, -6.7026, -14.4783

Complementary

The Complementary color scheme is a pair of colors which are on the opposite of each other on the color wheel.



49.7438, 13.8437, 6.5531



60.5127, -17.0093, 0.6908

Split Complementary

Split-complementary colors differ from the complementary color scheme. The scheme consists of three colors, the original color and two neighbors of the complement color.



49.7450, -13.4953, -9.4209



49.7438, 13.8437, 6.5531



49.7450, -17.2758, 6.4628

Square

The Square scheme is like the rectangle color scheme, but the four colors are evenly spaced on the color wheel.



49.7450, 13.8417, 6.5540



49.7450, -6.8034, 15.3294



49.7450, -17.2512, -1.4724



49.7450, 1.6300, -14.4429

Rectangle

The Rectangle color scheme consists of four colors that form a rectangle on the color wheel.



49.7438, 13.8437, 6.5531



49.7450, 4.2753, 14.6936



49.7450, -17.2512, -1.4724



49.7450, -9.2292, -13.2849

Sweetspot

The Sweet Spot groups the original color and five complimentary colors.



49.7450, 13.8417, 6.5540



80.5116, 1.9330, 5.7266



50.7148, 19.6668, -14.0349



37.0391, 1.4620, 2.7627



93.2148, -4.9737, 5.0645



40.3295, -2.1519, 2.1912

Same Dimension

The Same Dimension uses a secret algorithm to generate beautiful new colors.



49.7450, 13.8417, 6.5540



63.4452, 23.6534, 9.9025



54.9303, 3.3914, 13.3234



28.3298, 1.0264, 2.0925



25.6021, 43.9531, 15.7001



4.3099, 7.4781, 2.0318

Inverse Universe

The Inverse Universe completely reimagines the original color for something new.



49.7450, 13.8417, 6.5540



63.4452, 23.6534, 9.9025



54.5171, -7.0413, -8.9771



28.3298, 1.0264, 2.0925



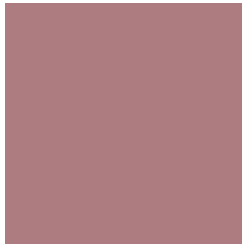
25.6021, 43.9531, 15.7001



4.3099, 7.4781, 2.0318

Previews

White Background



This preview shows how the HunterLab color 49.7438, 13.8437, 6.5531 looks on a white background.

Color Contrast Check

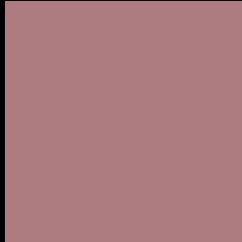
Large Text (above 18pt) WCAG AA ✓ Pass

Any Text WCAG AA × Fail

Large Text (above 18pt) WCAG AAA × Fail

Any Text WCAG AAA × Fail

Black Background



This preview shows how the HunterLab color 49.7438, 13.8437, 6.5531 looks on a black background.

Color Contrast Check

Large Text (above 18pt) WCAG AA ✓ Pass

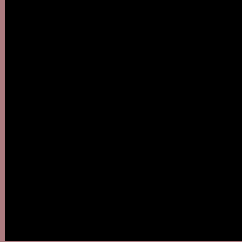
Any Text WCAG AA ✓ Pass

Large Text (above 18pt) WCAG AAA ✓ Pass

Any Text WCAG AAA × Fail

If you want to check with other color combinations, try the [Color Contrast Checker](#).

HunterLab 49.7438, 13.8437, 6.5531 Background



This preview shows how black text looks on a background with the HunterLab color 49.7438, 13.8437, 6.5531.



This preview shows how white text looks on a background with the HunterLab color 49.7438, 13.8437,

Color Blindness Simulation

Color vision deficiency is a very complex topic, and I could not describe the different causes any better than Wikipedia does, so if you want to learn more, you should check out their [article about color blindness](#).

Dichromacy



Original Color

49.7438, 13.8437, 6.5531

Protanopia

49.8463, -1.9143, 3.4172

Deuteranopia

49.9048, 3.5479, 6.9585



Tritanopia

49.7429, 15.4007, 4.4718

Trichromacy



Original Color

49.7438, 13.8437, 6.5531

Protanomaly

49.7471, 3.2871, 4.6942

Deuteranomaly

49.8095, 7.3664, 6.9210

Tritanomaly

49.6879, 15.1188, 5.2598

Monochromacy



Original Color

49.7438, 13.8437, 6.5531

Achromatopsia

50.8117, -2.7112, 2.7607

Achromatomaly

50.3773, 2.7624, 4.1137

CSS Examples

Text

The CSS property to change the color of the text to HunterLab 49.7438, 13.8437, 6.5531 is called "color". The color property can be set on classes, ids or directly on the HTML element.

This example shows how text in the color `rgb(172, 124, 128)` looks like.

```
.text, #text, p{  
    color:rgb(172, 124, 128)  
}
```

If you want to add a text shadow in that color use the text-shadow property, you can generate a text shadow directly with our [CSS Text Shadow Generator](#).

Here you see how black text with a 4 pixel rgb(172, 124, 128) colored shadow looks like.

```
.shadow{ text-shadow: 4px 4px 2px rgb(172, 124, 128) }
```

Border

The CSS property to change the border of an element to HunterLab 49.7438, 13.8437, 6.5531 is called "border". The border property can be set on classes, ids or directly on the HTML element.

This example shows the color as border, it can be applied via the CSS property "border" or "border-color".

```
.border, #border, table{ border:4px solid rgb(172, 124, 128) }
```


If only the border color should be changed use the property `border-color`.

```
.border{ border-color:rgb(172, 124, 128) }
```

If you want to add a box shadow in that color use:

Here you see how a box with a 4 pixel `rgb(172, 124, 128)` colored shadow looks like.

```
.boxshadow{ -moz-box-shadow:4px 4px 4px  
4px rgb(172, 124, 128); -webkit-box-  
shadow:4px 4px 4px 4px rgb(172, 124, 128);  
box-shadow:4px 4px 4px 4px rgb(172, 124,  
128) }
```

Background

The CSS property to change the background color of an element to HunterLab 49.7438, 13.8437, 6.5531 is called "background". The background property can be set on classes, ids or directly on the HTML element.

```
.background, #background, body{  
background: rgb(172, 124, 128) }
```

If only the background color should be changed can be used:

```
.background{ background-color: rgb(172,  
124, 128) }
```

This example shows the color as background, it is applied via the CSS property "background".

To optimize and compress your CSS code, you can use our [online CSS compressor and optimizer](#) based on csstidy. If you want to create a linear or radial gradient as background or border, check our [CSS Gradient Generator](#).

Hey! You found this booklet interesting? Support Converting Colors with the new Membership Option!

The pro membership hides all ads, plus gives you double the colors in the color bucket, and more awesome pro features!

[Learn more, Memberships starting at \\$2.50/m!](#)

**Follow me
on Twitter!**

@ConvertingColor