

Converting Colors

HunterLab(49.7733, 19.7858,
5.5318)

Have a look what the booklet for
HunterLab(49.7733, 19.7858,
5.5318) contains.

HunterLab(49.6549, 20.0481, 5.3088)	3
<i>Conversions</i>	4
<i>Details</i>	6
<i>Harmonies</i>	12
<i>Previews</i>	24
<i>Color Blindness Simulation</i>	28
<i>CSS Examples</i>	31

Color

**HunterLab(49.6549, 20.0481,
5.3088)**

Conversions

Conversions Part 1

Format	Color
Hex	B57783
RGB	181, 119, 131
RGB Percent	71%, 47%, 51%
CMY	0.2902, 0.5333, 0.4863
CMYK	0.00, 0.34, 0.28, 0.29
HSL	348°, 30%, 59%
HSV	348°, 34%, 71%
XYZ	29.7496, 24.6561, 24.6638
YIQ	138.9060, 33.1000, 16.8760

Conversions

Conversions Part 2

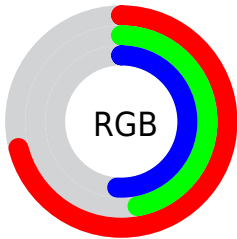
Format	Color
R_{YB}	181, 119, 131
Decimal	11892611
CIE _{Lab}	56.74, 25.95, 3.50
CIE _{LCh}	57, 26.185, 7.673
Yxy	24.6573, 0.3762, 0.3118
Android (android.graphics.Color)	4290082691 (0xFFB57783)
YUV	138.9060, -3.8977, 36.9164
Hunter-Lab	49.6549, 20.0481, 5.3088

Details

The HunterLab color $49.6549, 20.0481, 5.3088$ is a dark color, and the websafe version is hex 996666 . A complement of this color would be $63.1148, -21.9456, 3.2436$, and the grayscale version is $50.7810, -2.7095, 2.7590$.

A 20% lighter version of the original color is $71.5143, 21.2761, 6.8433$, and $30.6226, 18.7107, 3.7415$ is the 20% darker color. If you saturate the color by 10%, you get $45.1475, 27.2532, 6.4362$, and if you desaturate by 10%, it is $54.5965, 12.9159, 4.5138$.

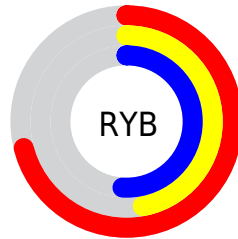
Distribution



Red (71%)

Green (47%)

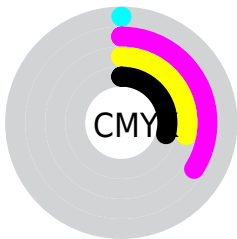
Blue (51%)



Red (71%)

Yellow (47%)

Blue (51%)

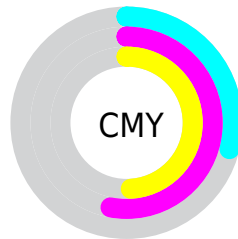


Cyan (0%)

Magenta (34%)

Yellow (28%)

Black (29%)



Cyan (29%)

Magenta (53%)

Yellow (49%)

Brightness & Saturation Gradients

These gradients show how the HunterLab color 49.6549, 20.0481, 5.3088 changes by changing the brightness by 10 percent. The first figure shows a shift by +10% for each color and the second figure -10%.

Similar to the brightness gradients but the following saturation gradients show a change of the HunterLab color 49.6549, 20.0481, 5.3088 by changing the saturation by 10% instead.

■ 49.6549, 20.0481,
5.3088

■ 49.6549, 20.0481,
5.3088

166.1706, 23.5860,
13.0053

■ 39.7767, 19.2273,
4.5753

■ 71.4847, 21.3688,
6.8525

■ 30.6565, 18.2858,
3.8648

■ 83.3531, 21.8946,
7.6608

■ 22.3647, 17.2053,
3.1764

■ 95.8142, 22.3410,
8.4933

■ 14.9944, 15.9724,
2.5057

108.8408, 22.7149,
9.3497

■ 8.6380, 14.8186,
2.1479

122.4096, 23.0218,
10.2295

0.0000, INF, NaN

0.0000, NaN, NaN

136.4996, 23.2667,

11.1324

0.0000, NaN, NaN

151.0922, 23.4535,
12.0578

0.0000, NaN, NaN

■ 49.6549, 20.0481,
5.3088

■ 49.6549, 20.0481,
5.3088

■ 45.1475, 27.2532,
6.4362

■ 54.5965, 12.9159,
4.5138

■ 41.1532, 34.3493,
7.9223

■ 59.8996, 5.9534,
4.0057

■ 37.7652, 41.0072,
9.7625

■ 65.5095, -0.8112,
3.7416

■ 35.0731, 46.7538,
11.8890

■ 71.3816, -7.3796,
3.6817

■ 33.1422, 51.0517,
14.1517

■ 77.4803, -13.7686,
3.7922

■ 31.9799, 53.5061,
16.3310

■ 83.7772, -20.0008,
4.0453

■ 31.5361, 54.3918,
17.3917

■ 90.2494, -26.0999,
4.4182

■ 93.8656, -27.8676,
1.3688

■ 94.1083, -26.4808,
-2.0791

Harmonies

Analogous

The Analogous color harmony consists of three colors that are next to each other on the color wheel.



49.6561, 18.4205, -5.5462



49.6549, 20.0481, 5.3088



49.6561, 15.1838, 13.4751

Triad

The Triadic color harmony groups three colors that are evenly spaced from another and form a triangle on the color wheel.



49.6561, 20.0459, 5.3097



49.6561, -14.9050, 16.1142



49.6561, -10.4193, -19.6894

Complementary

The Complementary color scheme is a pair of colors which are on the opposite of each other on the color wheel.



49.6549, 20.0481, 5.3088



63.1148, -21.9456, 3.2436

Split Complementary

Split-complementary colors differ from the complementary color scheme. The scheme consists of three colors, the original color and two neighbors of the complement color.



49.6561, -18.2793, -11.2011



49.6549, 20.0481, 5.3088



49.6561, -20.7080, 9.7419

Square

The Square scheme is like the rectangle color scheme, but the four colors are evenly spaced on the color wheel.



49.6561, 20.0459, 5.3097



49.6561, -5.4391, 18.7688



49.6561, -21.8874, -0.0534



49.6561, 0.1975, -21.5983

Rectangle

The Rectangle color scheme consists of four colors that form a rectangle on the color wheel.



49.6549, 20.0481, 5.3088



49.6561, 9.1470, 16.8526



49.6561, -21.8874, -0.0534



49.6561, -13.4431, -17.4339

Sweetspot

The Sweet Spot groups the original color and five complimentary colors.



49.6561, 20.0459, 5.3097



83.1827, 4.2370, 5.1801



49.9219, 24.2473, -20.7336



38.1934, 2.5542, 2.4339



95.4677, -5.0939, 5.1869



42.2927, -2.2566, 2.2978

Same Dimension

The Same Dimension uses a secret algorithm to generate beautiful new colors.



49.6561, 20.0459, 5.3097



61.9075, 33.9979, 8.1816



54.0547, 9.1524, 14.3238



29.2083, 1.2062, 1.7941



26.1993, 45.2172, 14.2152



4.7318, 8.3319, 1.2862

Inverse Universe

The Inverse Universe completely reimagines the original color for something new.



49.6561, 20.0459, 5.3097



61.9075, 33.9979, 8.1816



57.6549, -11.2972, -9.6271



29.2083, 1.2062, 1.7941



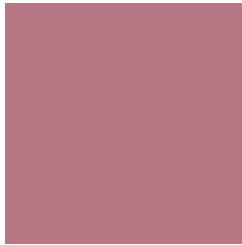
26.1993, 45.2172, 14.2152



4.7318, 8.3319, 1.2862

Previews

White Background



This preview shows how the HunterLab color 49.6549, 20.0481, 5.3088 looks on a white background.

Color Contrast Check

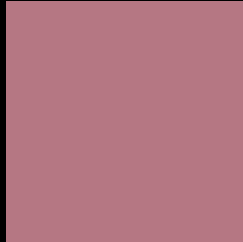
Large Text (above 18pt) WCAG AA ✓ Pass

Any Text WCAG AA × Fail

Large Text (above 18pt) WCAG AAA × Fail

Any Text WCAG AAA × Fail

Black Background



This preview shows how the HunterLab color 49.6549, 20.0481, 5.3088 looks on a black background.

Color Contrast Check

Large Text (above 18pt) WCAG AA ✓ Pass

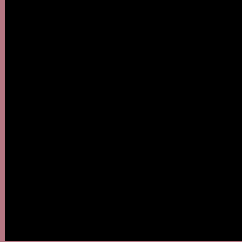
Any Text WCAG AA ✓ Pass

Large Text (above 18pt) WCAG AAA ✓ Pass

Any Text WCAG AAA × Fail

If you want to check with other color combinations, try the [Color Contrast Checker](#).

HunterLab 49.6549, 20.0481, 5.3088 Background



This preview shows how black text looks on a background with the HunterLab color 49.6549, 20.0481, 5.3088.



This preview shows how white text looks on a background with the HunterLab color 49.6549, 20.0481,

Color Blindness Simulation

Color vision deficiency is a very complex topic, and I could not describe the different causes any better than Wikipedia does, so if you want to learn more, you should check out their [article about color blindness](#).

Dichromacy



Original Color

49.6549, 20.0481, 5.3088

Protanopia

49.9346, -1.2606, 0.8270

Deuteranopia

49.8596, 3.5021, 6.0875



Tritanopia

49.5741, 19.6421, 6.4667

Trichromacy



Original Color

49.6549, 20.0481, 5.3088

Protanomaly

49.6401, 5.9913, 2.4252

Deuteranomaly

49.5752, 9.4617, 5.4560

Tritanomaly

49.6008, 19.7763, 6.0840

Monochromacy



Original Color

49.6549, 20.0481, 5.3088

Achromatopsia

50.8117, -2.7112, 2.7607

Achromatomaly

50.1499, 4.8572, 3.4494

CSS Examples

Text

The CSS property to change the color of the text to HunterLab 49.6549, 20.0481, 5.3088 is called "color". The color property can be set on classes, ids or directly on the HTML element.

This example shows how text in the color `rgb(181, 119, 131)` looks like.

```
.text, #text, p{  
    color:rgb(181, 119, 131)  
}
```

If you want to add a text shadow in that color use the text-shadow property, you can generate a text shadow directly with our [CSS Text Shadow Generator](#).

Here you see how black text with a 4 pixel rgb(181, 119, 131) colored shadow looks like.

```
.shadow{ text-shadow: 4px 4px 2px rgb(181, 119, 131) }
```

Border

The CSS property to change the border of an element to HunterLab 49.6549, 20.0481, 5.3088 is called "border". The border property can be set on classes, ids or directly on the HTML element.

This example shows the color as border, it can be applied via the CSS property "border" or "border-color".

```
.border, #border, table{ border:4px solid rgb(181, 119, 131) }
```


If only the border color should be changed use the property `border-color`.

```
.border{ border-color:rgb(181, 119, 131) }
```

If you want to add a box shadow in that color use:

Here you see how a box with a 4 pixel `rgb(181, 119, 131)` colored shadow looks like.

```
.boxshadow{ -moz-box-shadow:4px 4px 4px 4px rgb(181, 119, 131); -webkit-box-shadow:4px 4px 4px 4px rgb(181, 119, 131); box-shadow:4px 4px 4px 4px rgb(181, 119, 131) }
```

Background

The CSS property to change the background color of an element to HunterLab 49.6549, 20.0481, 5.3088 is called "background". The background property can be set on classes, ids or directly on the HTML element.

```
.background, #background, body{  
background: rgb(181, 119, 131) }
```

If only the background color should be changed can be used:

```
.background{ background-color: rgb(181,  
119, 131) }
```

This example shows the color as background, it is applied via the CSS property "background".

To optimize and compress your CSS code, you can use our [online CSS compressor and optimizer](#) based on csstidy. If you want to create a linear or radial gradient as background or border, check our [CSS Gradient Generator](#).

Hey! You found this booklet interesting? Support Converting Colors with the new Membership Option!

The pro membership hides all ads, plus gives you double the colors in the color bucket, and more awesome pro features!

[Learn more, Memberships starting at \\$2.50/m!](#)

**Follow me
on Twitter!**

@ConvertingColor