

Converting Colors

HunterLab(49.8156, 19.8692,
10.6447)

Have a look what the booklet for
HunterLab(49.8156, 19.8692,
10.6447) contains.

HunterLab(49.8156, 19.8692, 10.6447)	3
<i>Conversions</i>	4
<i>Details</i>	6
<i>Harmonies</i>	12
<i>Previews</i>	24
<i>Color Blindness Simulation</i>	28
<i>CSS Examples</i>	31

Color

**HunterLab(49.8156, 19.8692,
10.6447)**

Conversions

Conversions Part 1

Format	Color
Hex	B97776
RGB	185, 119, 118
RGB Percent	73%, 47%, 46%
CMY	0.2745, 0.5333, 0.5373
CMYK	0.00, 0.36, 0.36, 0.27
HSL	1°, 32%, 59%
HSV	1°, 36%, 73%
XYZ	29.8744, 24.8159, 20.3549
YIQ	138.6200, 39.6570, 13.6810

Conversions

Conversions Part 2

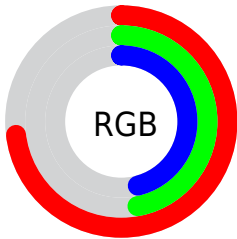
Format	Color
R_{YB}	185, 119, 118
Decimal	12154742
CIE _{Lab}	56.90, 25.75, 11.33
CIE _{LCh}	57, 28.129, 23.742
Yxy	24.8171, 0.3981, 0.3307
Android (android.graphics.Color)	4290344822 (0xFFB97776)
YUV	138.6200, -10.1657, 40.6753
Hunter-Lab	49.8156, 19.8692, 10.6447

Details

The HunterLab color **49.8156, 19.8692, 10.6447** is a dark color, and the websafe version is hex **996666**. A complement of this color would be **64.5242, -20.6081, -2.7769**, and the grayscale version is **50.6894, -2.7047, 2.7541**.

A 20% lighter version of the original color is **71.7370, 21.1935, 13.1434**, and **30.7315, 18.4732, 8.0810** is the 20% darker color. If you saturate the color by 10%, you get **45.2657, 26.9262, 12.7374**, and if you desaturate by 10%, it is **54.8291, 12.9978, 8.6230**.

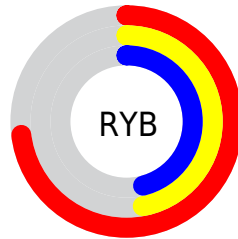
Distribution



Red (73%)

Green (47%)

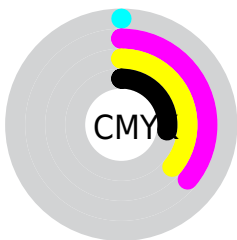
Blue (46%)



Red (73%)

Yellow (47%)

Blue (46%)

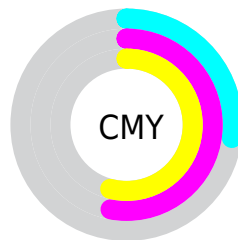


Cyan (0%)

Magenta (36%)

Yellow (36%)

Black (27%)



Cyan (27%)

Magenta (53%)

Yellow (54%)

Brightness & Saturation Gradients

These gradients show how the HunterLab color 49.8156, 19.8692, 10.6447 changes by changing the brightness by 10 percent. The first figure shows a shift by +10% for each color and the second figure -10%.

Similar to the brightness gradients but the following saturation gradients show a change of the HunterLab color 49.8156, 19.8692, 10.6447 by changing the saturation by 10% instead.

■ 49.8156, 19.8692,
10.6447

■ 49.8156, 19.8692,
10.6447

166.4110, 23.3256,
21.5372

■ 39.9260, 19.0592,
9.4347

■ 71.6662, 21.1691,
13.0376

■ 30.7934, 18.1293,
8.2003

■ 83.5441, 21.6851,
14.2311

■ 22.4880, 17.0609,
6.9241

■ 96.0142, 22.1223,
15.4282

■ 15.1023, 15.8398,
5.5738

109.0496, 22.4872,
16.6314

■ 8.7380, 14.6421,
5.8482

122.6267, 22.7856,
17.8427

0.0000, INF, NaN

0.0000, NaN, NaN

136.7247, 23.0221,

19.0634

0.0000, NaN, NaN

151.3250, 23.2009,
20.2946

0.0000, NaN, NaN

■ 49.8156, 19.8692,
10.6447

■ 49.8156, 19.8692,
10.6447

■ 45.2657, 26.9262,
12.7374

■ 54.8291, 12.9978,
8.6230

■ 41.2646, 33.9946,
14.8369

■ 60.2277, 6.3957,
6.6961

■ 37.9111, 40.7401,
16.8332

■ 65.9521, 0.0759,
4.8703

■ 35.2974, 46.6710,
18.5644

■ 71.9540, -5.9777,
3.1405

■ 33.4844, 51.2243,
19.8506

■ 78.1948, -11.7938,
1.4967

■ 32.4646, 53.9824,
20.5825

■ 84.6442, -17.4053,
-0.0722

■ 32.2094, 54.6794,
20.8046

■ 91.2776, -22.8434,
-1.5769

■ 94.3686, -25.5176,
-1.7375

Harmonies

Analogous

The Analogous color harmony consists of three colors that are next to each other on the color wheel.



49.8168, 21.9709, 0.2998



49.8156, 19.8692, 10.6447



49.8168, 11.4876, 17.1703

Triad

The Triadic color harmony groups three colors that are evenly spaced from another and form a triangle on the color wheel.



49.8168, 19.8668, 10.6456



49.8168, -19.6751, 13.8667



49.8168, -5.1112, -23.8825

Complementary

The Complementary color scheme is a pair of colors which are on the opposite of each other on the color wheel.



49.8156, 19.8692, 10.6447



64.5242, -20.6081, -2.7769

Split Complementary

Split-complementary colors differ from the complementary color scheme. The scheme consists of three colors, the original color and two neighbors of the complement color.



49.8168, -15.3875, -18.0317



49.8156, 19.8692, 10.6447



49.8168, -23.2764, 5.0086

Square

The Square scheme is like the rectangle color scheme, but the four colors are evenly spaced on the color wheel.



49.8168, 19.8668, 10.6456



49.8168, -11.4744, 18.7046



49.8168, -21.7829, -6.7890



49.8168, 6.8117, -21.3801

Rectangle

The Rectangle color scheme consists of four colors that form a rectangle on the color wheel.



49.8156, 19.8692, 10.6447



49.8168, 3.8550, 19.3064



49.8168, -21.7829, -6.7890



49.8168, -8.8579, -22.7911

Sweetspot

The Sweet Spot groups the original color and five complimentary colors.



49.8168, 19.8668, 10.6456



84.4094, 4.2535, 7.7141



51.7438, 31.0263, -20.1654



38.7163, 2.5028, 3.7343



96.5975, -5.1542, 5.2483



43.2801, -2.3093, 2.3515

Same Dimension

The Same Dimension uses a secret algorithm to generate beautiful new colors.



49.8168, 19.8668, 10.6456



62.0444, 33.6470, 16.3374



58.2383, 3.5954, 18.4998



30.0553, 0.9446, 2.5440



26.5964, 45.0583, 17.1774



5.0666, 8.2139, 3.2658

Inverse Universe

The Inverse Universe completely reimagines the original color for something new.



64.5242, -20.6081, -2.7769



85.3230, -30.9904, -5.0900



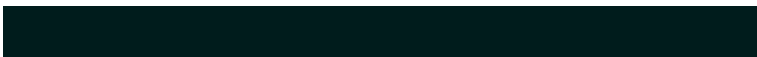
54.4509, -5.5469, -16.5227



31.9169, -4.0956, 0.8715



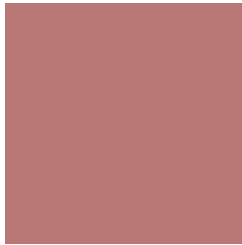
50.2387, -26.1311, -6.3844



9.4717, -4.9529, -1.1469

Previews

White Background



This preview shows how the HunterLab color 49.8156, 19.8692, 10.6447 looks on a white background.

Color Contrast Check

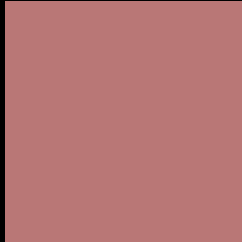
Large Text (above 18pt) WCAG AA ✓ Pass

Any Text WCAG AA × Fail

Large Text (above 18pt) WCAG AAA × Fail

Any Text WCAG AAA × Fail

Black Background



This preview shows how the HunterLab color 49.8156, 19.8692, 10.6447 looks on a black background.

Color Contrast Check

Large Text (above 18pt) WCAG AA ✓ Pass

Any Text WCAG AA ✓ Pass

Large Text (above 18pt) WCAG AAA ✓ Pass

Any Text WCAG AAA × Fail

If you want to check with other color combinations, try the [Color Contrast Checker](#).

HunterLab 49.8156, 19.8692, 10.6447 Background



This preview shows how black text looks on a background with the HunterLab color 49.8156, 19.8692, 10.6447.



This preview shows how white text looks on a background with the HunterLab color 49.8156, 19.8692,

Color Blindness Simulation

Color vision deficiency is a very complex topic, and I could not describe the different causes any better than Wikipedia does, so if you want to learn more, you should check out their [article about color blindness](#).

Dichromacy



Original Color

49.8156, 19.8692, 10.6447

Protanopia

49.8913, -2.1935, 6.8432

Deuteranopia

50.0326, 3.4337, 11.3097



Tritanopia

49.9282, 21.8777, 7.3050

Trichromacy



Original Color

49.8156, 19.8692, 10.6447

Protanomaly

49.6886, 5.4453, 7.9598

Deuteranomaly

49.7875, 9.4895, 10.8032

Tritanomaly

49.8510, 21.4923, 8.4148

Monochromacy



Original Color

49.8156, 19.8692, 10.6447

Achromatopsia

50.8117, -2.7112, 2.7607

Achromatomaly

50.2087, 4.7762, 5.6655

CSS Examples

Text

The CSS property to change the color of the text to HunterLab 49.8156, 19.8692, 10.6447 is called "color". The color property can be set on classes, ids or directly on the HTML element.

This example shows how text in the color `rgb(185, 119, 118)` looks like.

```
.text, #text, p{  
    color:rgb(185, 119, 118)  
}
```

If you want to add a text shadow in that color use the text-shadow property, you can generate a text shadow directly with our [CSS Text Shadow Generator](#).

Here you see how black text with a 4 pixel rgb(185, 119, 118) colored shadow looks like.

```
.shadow{ text-shadow: 4px 4px 2px rgb(185, 119, 118) }
```

Border

The CSS property to change the border of an element to HunterLab 49.8156, 19.8692, 10.6447 is called "border". The border property can be set on classes, ids or directly on the HTML element.

This example shows the color as border, it can be applied via the CSS property "border" or "border-color".

```
.border, #border, table{ border:4px solid rgb(185, 119, 118) }
```


If only the border color should be changed use the property `border-color`.

```
.border{ border-color:rgb(185, 119, 118) }
```

If you want to add a box shadow in that color use:

Here you see how a box with a 4 pixel `rgb(185, 119, 118)` colored shadow looks like.

```
.boxshadow{ -moz-box-shadow:4px 4px 4px  
4px rgb(185, 119, 118); -webkit-box-  
shadow:4px 4px 4px 4px rgb(185, 119, 118);  
box-shadow:4px 4px 4px 4px rgb(185, 119,  
118) }
```

Background

The CSS property to change the background color of an element to HunterLab 49.8156, 19.8692, 10.6447 is called "background". The background property can be set on classes, ids or directly on the HTML element.

```
.background, #background, body{  
background: rgb(185, 119, 118) }
```

If only the background color should be changed can be used:

```
.background{ background-color: rgb(185,  
119, 118) }
```

This example shows the color as background, it is applied via the CSS property "background".

To optimize and compress your CSS code, you can use our [online CSS compressor and optimizer](#) based on csstidy. If you want to create a linear or radial gradient as background or border, check our [CSS Gradient Generator](#).

Hey! You found this booklet interesting? Support Converting Colors with the new Membership Option!

The pro membership hides all ads, plus gives you double the colors in the color bucket, and more awesome pro features!

[Learn more, Memberships starting at \\$2.50/m!](#)

**Follow me
on Twitter!**

@ConvertingColor