

Converting Colors

HunterLab(49.8774, 21.9734,
10.9664)

Have a look what the booklet for
HunterLab(49.8774, 21.9734,
10.9664) contains.

HunterLab(49.8254, 22.2813, 11.0658)	3
<i>Conversions</i>	4
<i>Details</i>	6
<i>Harmonies</i>	12
<i>Previews</i>	24
<i>Color Blindness Simulation</i>	28
<i>CSS Examples</i>	31

Color

**HunterLab(49.8254, 22.2813,
11.0658)**

Conversions

Conversions Part 1

Format	Color
Hex	BD7575
RGB	189, 117, 117
RGB Percent	74%, 46%, 46%
CMY	0.2588, 0.5412, 0.5412
CMYK	0.00, 0.38, 0.38, 0.26
HSL	0°, 35%, 60%
HSV	0°, 38%, 74%
XYZ	30.5584, 24.8257, 20.0108
YIQ	138.5280, 42.9120, 15.2640

Conversions

Conversions Part 2

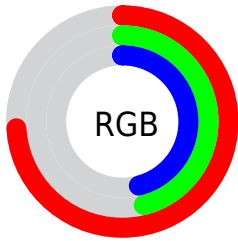
Format	Color
R _Y B	189, 117, 117
Decimal	12416373
CIE Lab	56.91, 28.28, 11.99
CIE LCh	57, 30.719, 22.974
Yxy	24.8269, 0.4053, 0.3293
Android (android.graphics.Color)	4290606453 (0xFFBD7575)
YUV	138.5280, -10.6133, 44.2639
Hunter-Lab	49.8254, 22.2813, 11.0658

Details

The HunterLab color **49.8254, 22.2813, 11.0658** is a dark color, and the websafe version is hex **996666**. A complement of this color would be **66.2189, -22.2965, -2.6930**, and the grayscale version is **50.6536, -2.7027, 2.7521**.

A 20% lighter version of the original color is **71.6855, 23.6887, 13.5415**, and **30.7092, 20.3940, 8.4096** is the 20% darker color. If you saturate the color by 10%, you get **45.2303, 29.6639, 13.2101**, and if you desaturate by 10%, it is **54.9316, 15.0471, 9.0113**.

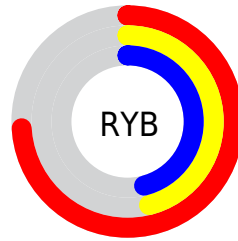
Distribution



Red (74%)

Green (46%)

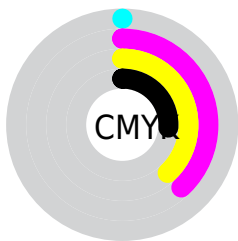
Blue (46%)



Red (74%)

Yellow (46%)

Blue (46%)

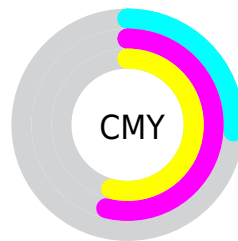


Cyan (0%)

Magenta (38%)

Yellow (38%)

Black (26%)



Cyan (26%)

Magenta (54%)

Yellow (54%)

Brightness & Saturation Gradients

These gradients show how the HunterLab color 49.8254, 22.2813, 11.0658 changes by changing the brightness by 10 percent. The first figure shows a shift by +10% for each color and the second figure -10%.

Similar to the brightness gradients but the following saturation gradients show a change of the HunterLab color 49.8254, 22.2813, 11.0658 by changing the saturation by 10% instead.

■ 49.8254, 22.2813,
11.0658

■ 49.8254, 22.2813,
11.0658

166.4256, 26.6217,
22.2390

■ 39.9351, 21.3566,
9.8134

■ 71.6773, 23.7996,
13.5339

■ 30.8017, 20.3091,
8.5322

■ 83.5558, 24.4196,
14.7614

■ 22.4955, 19.1222,
7.2031

■ 96.0264, 24.9574,
15.9905

■ 15.1089, 17.7878,
5.7915

109.0623, 25.4199,
17.2242

■ 8.7440, 16.5061,
6.1208

122.6399, 25.8129,
18.4644

0.0000, INF, NaN

0.0000, NaN, NaN

136.7384, 26.1414,

19.7129

0.0000, NaN, NaN

151.3392, 26.4098,
20.9708

0.0000, NaN, NaN

■ 49.8254, 22.2813,
11.0658

■ 49.8254, 22.2813,
11.0658

■ 45.2303, 29.6639,
13.2101

■ 54.9316, 15.0471,
9.0113

■ 41.2409, 36.9679,
15.3700

■ 60.4614, 8.0759,
7.0738

■ 37.9636, 43.7844,
17.4178

■ 66.3476, 1.3952,
5.2593

■ 35.4909, 49.5482,
19.1706

■ 72.5361, -5.0053,
3.5605

■ 33.8707, 53.6777,
20.4372

■ 78.9836, -11.1539,
1.9649

■ 33.0229, 55.9664,
21.1427

■ 85.6563, -17.0842,
0.4585

■ 32.8923, 56.3272,
21.2542

■ 92.5269, -22.8298,
-0.9716

■ 94.6355, -24.5327,
-1.3881

Harmonies

Analogous

The Analogous color harmony consists of three colors that are next to each other on the color wheel.



49.8266, 24.4074, -0.2596



49.8254, 22.2813, 11.0658



49.8266, 13.1631, 18.1052

Triad

The Triadic color harmony groups three colors that are evenly spaced from another and form a triangle on the color wheel.



49.8266, 22.2788, 11.0667



49.8266, -20.9487, 14.9259



49.8266, -5.6576, -26.8292

Complementary

The Complementary color scheme is a pair of colors which are on the opposite of each other on the color wheel.



49.8254, 22.2813, 11.0658



66.2189, -22.2965, -2.6930

Split Complementary

Split-complementary colors differ from the complementary color scheme. The scheme consists of three colors, the original color and two neighbors of the complement color.



49.8266, -16.7282, -20.0274



49.8254, 22.2813, 11.0658



49.8266, -24.9558, 5.5115

Square

The Square scheme is like the rectangle color scheme, but the four colors are evenly spaced on the color wheel.



49.8266, 22.2788, 11.0667



49.8266, -11.9728, 19.9055



49.8266, -23.4930, -7.3982



49.8266, 7.3886, -24.2515

Rectangle

The Rectangle color scheme consists of four colors that form a rectangle on the color wheel.



49.8254, 22.2813, 11.0658



49.8266, 4.8074, 20.4026



49.8266, -23.4930, -7.3982



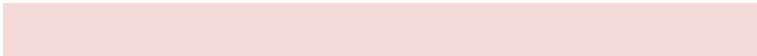
49.8266, -9.7144, -25.5162

Sweetspot

The Sweet Spot groups the original color and five complimentary colors.



49.8266, 22.2788, 11.0667



86.3186, 4.5807, 7.7695



52.1686, 33.7057, -21.9799



39.5307, 2.6821, 3.7540



97.7295, -5.2146, 5.3098



44.2712, -2.3622, 2.4053

Same Dimension

The Same Dimension uses a secret algorithm to generate beautiful new colors.



49.8266, 22.2788, 11.0667



61.3223, 38.3529, 17.2849



59.0642, 4.1909, 19.5742



30.8812, 1.0449, 2.5805



26.9805, 46.2029, 17.4341



5.3402, 9.1433, 3.4507

Inverse Universe

The Inverse Universe completely reimagines the original color for something new.



66.2189, -22.2965, -2.6930



87.5678, -33.8196, -5.0148



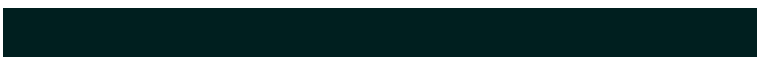
54.9897, -5.6252, -18.1231



32.8778, -4.2833, 0.9384



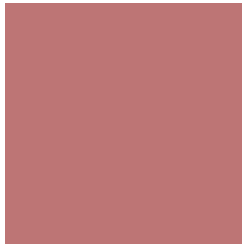
51.9199, -27.5234, -5.4802



10.2759, -5.4475, -1.0844

Previews

White Background



This preview shows how the HunterLab color 49.8254, 22.2813, 11.0658 looks on a white background.

Color Contrast Check

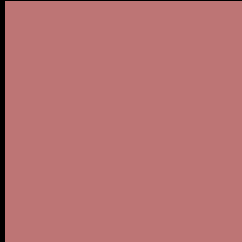
Large Text (above 18pt) WCAG AA ✓ Pass

Any Text WCAG AA × Fail

Large Text (above 18pt) WCAG AAA × Fail

Any Text WCAG AAA × Fail

Black Background



This preview shows how the HunterLab color 49.8254, 22.2813, 11.0658 looks on a black background.

Color Contrast Check

Large Text (above 18pt) WCAG AA ✓ Pass

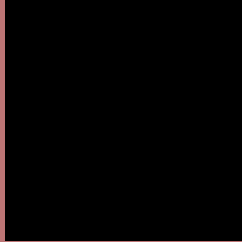
Any Text WCAG AA ✓ Pass

Large Text (above 18pt) WCAG AAA ✓ Pass

Any Text WCAG AAA × Fail

If you want to check with other color combinations, try the [Color Contrast Checker](#).

HunterLab 49.8254, 22.2813, 11.0658 Background



This preview shows how black text looks on a background with the HunterLab color 49.8254, 22.2813, 11.0658.



This preview shows how white text looks on a background with the HunterLab color 49.8254, 22.2813,

Color Blindness Simulation

Color vision deficiency is a very complex topic, and I could not describe the different causes any better than Wikipedia does, so if you want to learn more, you should check out their [article about color blindness](#).

Dichromacy



Original Color

49.8254, 22.2813, 11.0658

Protanopia

49.8913, -2.1935, 6.8432

Deuteranopia

49.9865, 3.1870, 11.9747



Tritanopia

49.8931, 24.0190, 8.5041

Trichromacy



Original Color

49.8254, 22.2813, 11.0658

Protanomaly

49.4990, 6.1391, 8.1630

Deuteranomaly

49.8513, 9.6025, 11.5957

Tritanomaly

49.8181, 23.6481, 9.5832

Monochromacy



Original Color

49.8254, 22.2813, 11.0658

Achromatopsia

50.8117, -2.7112, 2.7607

Achromatomaly

50.0394, 5.5978, 5.4897

CSS Examples

Text

The CSS property to change the color of the text to HunterLab 49.8254, 22.2813, 11.0658 is called "color". The color property can be set on classes, ids or directly on the HTML element.

This example shows how text in the color `rgb(189, 117, 117)` looks like.

```
.text, #text, p{  
    color:rgb(189, 117, 117)  
}
```

If you want to add a text shadow in that color use the text-shadow property, you can generate a text shadow directly with our [CSS Text Shadow Generator](#).

Here you see how black text with a 4 pixel rgb(189, 117, 117) colored shadow looks like.

```
.shadow{ text-shadow: 4px 4px 2px rgb(189, 117, 117) }
```

Border

The CSS property to change the border of an element to HunterLab 49.8254, 22.2813, 11.0658 is called "border". The border property can be set on classes, ids or directly on the HTML element.

This example shows the color as border, it can be applied via the CSS property "border" or "border-color".

```
.border, #border, table{ border:4px solid rgb(189, 117, 117) }
```


If only the border color should be changed use the property `border-color`.

```
.border{ border-color:rgb(189, 117, 117) }
```

If you want to add a box shadow in that color use:

Here you see how a box with a 4 pixel `rgb(189, 117, 117)` colored shadow looks like.

```
.boxshadow{ -moz-box-shadow:4px 4px 4px  
4px rgb(189, 117, 117); -webkit-box-  
shadow:4px 4px 4px 4px rgb(189, 117, 117);  
box-shadow:4px 4px 4px 4px rgb(189, 117,  
117) }
```

Background

The CSS property to change the background color of an element to HunterLab 49.8254, 22.2813, 11.0658 is called "background". The background property can be set on classes, ids or directly on the HTML element.

```
.background, #background, body{  
background: rgb(189, 117, 117) }
```

If only the background color should be changed can be used:

```
.background{ background-color: rgb(189,  
117, 117) }
```

This example shows the color as background, it is applied via the CSS property "background".

To optimize and compress your CSS code, you can use our [online CSS compressor and optimizer](#) based on csstidy. If you want to create a linear or radial gradient as background or border, check our [CSS Gradient Generator](#).

Hey! You found this booklet interesting? Support Converting Colors with the new Membership Option!

The pro membership hides all ads, plus gives you double the colors in the color bucket, and more awesome pro features!

[Learn more, Memberships starting at \\$2.50/m!](#)

**Follow me
on Twitter!**

@ConvertingColor