

Converting Colors

HunterLab(49.9161, 71.7096,
14.6975)

Have a look what the booklet for
HunterLab(49.9161, 71.7096,
14.6975) contains.

HunterLab(49.9275, 71.6126, 14.8377)	3
<i>Conversions</i>	4
<i>Details</i>	6
<i>Harmonies</i>	12
<i>Previews</i>	24
<i>Color Blindness Simulation</i>	28
<i>CSS Examples</i>	31

Color

**HunterLab(49.9275, 71.6126,
14.8377)**

Conversions

Conversions Part 1

Format	Color
Hex	FC3B6D
RGB	252, 59, 109
RGB Percent	99%, 23%, 43%
CMY	0.0118, 0.7686, 0.5725
CMYK	0.00, 0.77, 0.57, 0.01
HSL	344°, 97%, 61%
HSV	344°, 77%, 99%
XYZ	44.4692, 24.9276, 16.9357
YIQ	122.4070, 98.9780, 56.4660

Conversions

Conversions Part 2

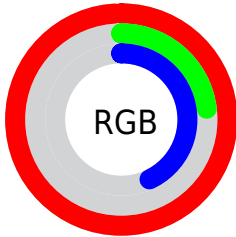
Format	Color
R_{YB}	252, 59, 109
Decimal	16530285
CIE _{Lab}	57.01, 73.48, 18.31
CIE _{LCh}	57, 75.727, 13.995
Yxy	24.9290, 0.5151, 0.2887
Android (android.graphics.Color)	4294720365 (0xFFFC3B6D)
YUV	122.4070, -6.6097, 113.6531
Hunter-Lab	49.9275, 71.6126, 14.8377

Details

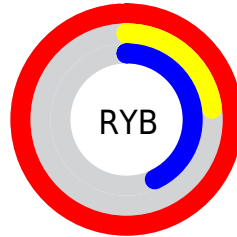
The HunterLab color **49.9275, 71.6126, 14.8377** is a dark color, and the websafe version is hex **FF3366**. The color can be described as middle washed rose. A complement of this color would be **86.4961, -53.8034, 14.0488**, and the grayscale version is **44.2747, -2.3624, 2.4055**.

A 20% lighter version of the original color is **61.6149, 50.5488, 6.8490**, and **33.2252, 57.9460, 13.3550** is the 20% darker color. If you saturate the color by 10%, you get **47.5107, 76.7974, 18.4578**, and if you desaturate by 10%, it is **53.4971, 63.8910, 11.5744**.

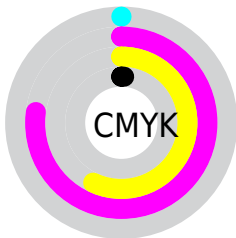
Distribution



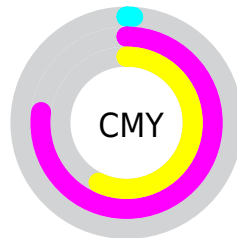
- Red (99%)
- Green (23%)
- Blue (43%)



- Red (99%)
- Yellow (23%)
- Blue (43%)



- Cyan (0%)
- Magenta (77%)
- Yellow (57%)
- Black (1%)



- Cyan (1%)
- Magenta (77%)
- Yellow (57%)

Brightness & Saturation Gradients

These gradients show how the HunterLab color 49.9275, 71.6126, 14.8377 changes by changing the brightness by 10 percent. The first figure shows a shift by +10% for each color and the second figure -10%.

Similar to the brightness gradients but the following saturation gradients show a change of the HunterLab color 49.9275, 71.6126, 14.8377 by changing the saturation by 10% instead.

■ 49.9275, 71.6126,
14.8377

■ 49.9275, 71.6126,
14.8377

166.5786, 89.3673,
28.7493

■ 40.0302, 69.2484,
13.1691

■ 71.7928, 76.1681,
18.0427

■ 30.8889, 66.9174,
11.4274

■ 83.6774, 78.3245,
19.6019

■ 22.5741, 64.7769,
9.5793

■ 96.1538, 80.3887,
21.1438

■ 15.1777, 63.2437,
7.6181

■ 109.1952, 82.3602,
22.6738

■ 8.8070, 63.8920,
6.1649

■ 122.7781, 84.2408,
24.1964

0.0000, INF, NaN

0.0000, INF, NaN

136.8817, 86.0333,

25.7148

0.0000, NaN, NaN

151.4874, 87.7409,
27.2318

0.0000, NaN, NaN

■ 49.9275, 71.6126,
14.8377

■ 49.9275, 71.6126,
14.8377

■ 47.5107, 76.7974,
18.4578

■ 53.4971, 63.8910,
11.5744

■ 46.2015, 79.0841,
22.0615

■ 58.1443, 54.4254,
8.9068

■ 45.9132, 79.4658,
23.1713

■ 63.7444, 43.9967,
6.9309

■ 70.1575, 33.1962,
5.6317

■ 77.2536, 22.3891,
4.9371

■ 84.9219, 11.7654,
4.7565

■ 93.0720, 1.4034,
5.0028

■ 99.7173, -6.3205,
5.0827

Harmonies

Analogous

The Analogous color harmony consists of three colors that are next to each other on the color wheel.



49.9290, 70.7641, -16.1304



49.9275, 71.6126, 14.8377



49.9290, 49.3844, 28.5921

Triad

The Triadic color harmony groups three colors that are evenly spaced from another and form a triangle on the color wheel.



49.9290, 71.6076, 14.8389



49.9290, -38.4399, 29.0688



49.9290, -18.4346, -91.7744

Complementary

The Complementary color scheme is a pair of colors which are on the opposite of each other on the color wheel.



49.9275, 71.6126, 14.8377



86.4961, -53.8034, 14.0488

Split Complementary

Split-complementary colors differ from the complementary color scheme. The scheme consists of three colors, the original color and two neighbors of the complement color.



49.9290, -39.4848, -56.9280



49.9275, 71.6126, 14.8377



49.9290, -48.9017, 16.2444

Square

The Square scheme is like the rectangle color scheme, but the four colors are evenly spaced on the color wheel.



49.9290, 71.6076, 14.8389



49.9290, -16.6121, 32.6258



49.9290, -49.2289, -13.4971



49.9290, 13.0000, -93.0949

Rectangle

The Rectangle color scheme consists of four colors that form a rectangle on the color wheel.



49.9275, 71.6126, 14.8377



49.9290, 27.0755, 31.8273



49.9290, -49.2289, -13.4971



49.9290, -26.7506, -82.9337

Sweetspot

The Sweet Spot groups the original color and five complimentary colors.



49.9290, 71.6076, 14.8389



81.0113, 18.8244, 4.8837



47.4460, 79.1137, -84.4641



36.2087, 10.5227, 2.3160

0.0000, NaN, NaN



46.2646, -2.4686, 2.5136

Same Dimension

The Same Dimension uses a secret algorithm to generate beautiful new colors.



49.9290, 71.6076, 14.8389



47.2981, 79.4648, 20.7372



55.6066, 49.9956, 30.7259



41.5921, 2.0141, 2.2443



33.1680, 57.4667, 16.2744



10.1756, 17.7893, 3.7590

Inverse Universe

The Inverse Universe completely reimagines the original color for something new.



49.9290, 71.6076, 14.8389



47.2981, 79.4648, 20.7372



72.5049, -24.2697, -31.0574



41.5921, 2.0141, 2.2443



33.1680, 57.4667, 16.2744



10.1756, 17.7893, 3.7590

Previews

White Background



This preview shows how the HunterLab color 49.9275, 71.6126, 14.8377 looks on a white background.

Color Contrast Check

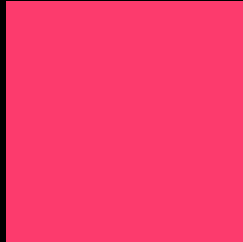
Large Text (above 18pt) WCAG AA ✓ Pass

Any Text WCAG AA × Fail

Large Text (above 18pt) WCAG AAA × Fail

Any Text WCAG AAA × Fail

Black Background



This preview shows how the HunterLab color 49.9275, 71.6126, 14.8377 looks on a black background.

Color Contrast Check

Large Text (above 18pt) WCAG AA ✓ Pass

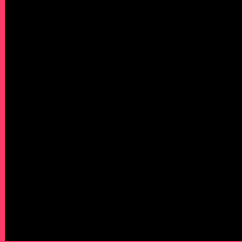
Any Text WCAG AA ✓ Pass

Large Text (above 18pt) WCAG AAA ✓ Pass

Any Text WCAG AAA × Fail

If you want to check with other color combinations, try the [Color Contrast Checker](#).

HunterLab 49.9275, 71.6126, 14.8377 Background



This preview shows how black text looks on a background with the HunterLab color 49.9275, 71.6126, 14.8377.

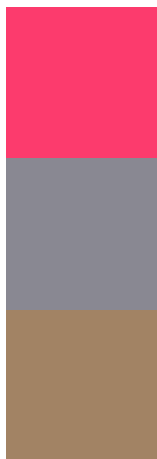


This preview shows how white text looks on a background with the HunterLab color 49.9275, 71.6126,

Color Blindness Simulation

Color vision deficiency is a very complex topic, and I could not describe the different causes any better than Wikipedia does, so if you want to learn more, you should check out their [article about color blindness](#).

Dichromacy



Original Color

49.9275, 71.6126, 14.8377

Protanopia

50.0020, -0.7239, -1.4472

Deuteranopia

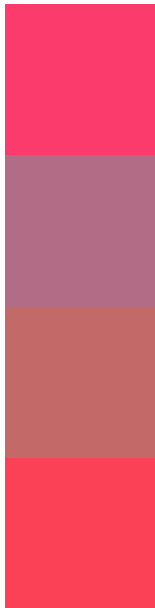
49.8338, 3.4734, 16.4238



Tritanopia

49.9131, 65.1019, 24.8148

Trichromacy



Original Color

49.9275, 71.6126, 14.8377

Protanomaly

46.9066, 25.1758, 1.2958

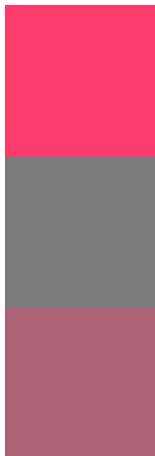
Deuteranomaly

47.6283, 29.1041, 13.8840

Tritanomaly

49.9457, 67.3930, 21.7539

Monochromacy



Original Color

49.9275, 71.6126, 14.8377

Achromatopsia

44.1155, -2.3539, 2.3969

Achromatomaly

43.1776, 23.8016, 3.9127

CSS Examples

Text

The CSS property to change the color of the text to HunterLab 49.9275, 71.6126, 14.8377 is called "color". The color property can be set on classes, ids or directly on the HTML element.

This example shows how text in the color `rgb(252, 59, 109)` looks like.

```
.text, #text, p{  
    color:rgb(252, 59, 109)  
}
```

If you want to add a text shadow in that color use the text-shadow property, you can generate a text shadow directly with our [CSS Text Shadow Generator](#).

Here you see how black text with a 4 pixel rgb(252, 59, 109) colored shadow looks like.

```
.shadow{ text-shadow: 4px 4px 2px rgb(252, 59, 109) }
```

Border

The CSS property to change the border of an element to HunterLab 49.9275, 71.6126, 14.8377 is called "border". The border property can be set on classes, ids or directly on the HTML element.

This example shows the color as border, it can be applied via the CSS property "border" or "border-color".

```
.border, #border, table{ border:4px solid rgb(252, 59, 109) }
```


If only the border color should be changed use the property `border-color`.

```
.border{ border-color:rgb(252, 59, 109) }
```

If you want to add a box shadow in that color use:

Here you see how a box with a 4 pixel `rgb(252, 59, 109)` colored shadow looks like.

```
.boxshadow{ -moz-box-shadow:4px 4px 4px  
4px rgb(252, 59, 109); -webkit-box-  
shadow:4px 4px 4px 4px rgb(252, 59, 109);  
box-shadow:4px 4px 4px 4px rgb(252, 59,  
109) }
```

Background

The CSS property to change the background color of an element to HunterLab 49.9275, 71.6126, 14.8377 is called "background". The background property can be set on classes, ids or directly on the HTML element.

```
.background, #background, body{  
background: rgb(252, 59, 109) }
```

If only the background color should be changed can be used:

```
.background{ background-color: rgb(252, 59,  
109) }
```

This example shows the color as background, it is applied via the CSS property "background".

To optimize and compress your CSS code, you can use our [online CSS compressor and optimizer](#) based on csstidy. If you want to create a linear or radial gradient as background or border, check our [CSS Gradient Generator](#).

Hey! You found this booklet interesting? Support Converting Colors with the new Membership Option!

The pro membership hides all ads, plus gives you double the colors in the color bucket, and more awesome pro features!

[Learn more, Memberships starting at \\$2.50/m!](#)

**Follow me
on Twitter!**

@ConvertingColor