

Converting Colors

HunterLab(49.9182, 73.9461,
16.1802)

Have a look what the booklet for
HunterLab(49.9182, 73.9461,
16.1802) contains.

HunterLab(49.9182, 73.9461, 16.1802)	3
<i>Conversions</i>	4
<i>Details</i>	6
<i>Harmonies</i>	12
<i>Previews</i>	24
<i>Color Blindness Simulation</i>	28
<i>CSS Examples</i>	31

Color

**HunterLab(49.9182, 73.9461,
16.1802)**

Conversions

Conversions Part 1

Format	Color
Hex	FF3669
RGB	255, 54, 105
RGB Percent	100%, 21%, 41%
CMY	0.0000, 0.7882, 0.5882
CMYK	0.00, 0.79, 0.59, 0.00
HSL	345°, 100%, 61%
HSV	345°, 79%, 100%
XYZ	45.1090, 24.9183, 15.7968
YIQ	119.9130, 103.4250, 58.4730

Conversions

Conversions Part 2

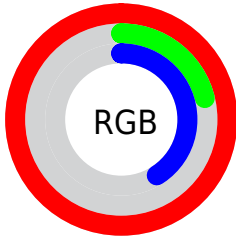
Format	Color
R_{YB}	255, 54, 105
Decimal	16725609
CIE _{Lab}	57.00, 75.37, 20.77
CIE _{LCh}	57, 78.179, 15.403
Yxy	24.9197, 0.5256, 0.2904
Android (android.graphics.Color)	4294915689 (0xFFFF3669)
YUV	119.9130, -7.3521, 118.4713
Hunter-Lab	49.9182, 73.9461, 16.1802

Details

The HunterLab color **49.9182, 73.9461, 16.1802** is a dark color, and the websafe version is hex **FF3366**. The color can be described as middle washed rose. A complement of this color would be **87.5584, -54.9994, 14.3002**, and the grayscale version is **43.3072, -2.3108, 2.3530**.

A 20% lighter version of the original color is **60.9042, 51.5571, 7.8126**, and **33.7522, 58.7372, 14.5579** is the 20% darker color. If you saturate the color by 10%, you get **47.7352, 78.5499, 19.8623**, and if you desaturate by 10%, it is **53.2755, 66.6318, 12.7613**.

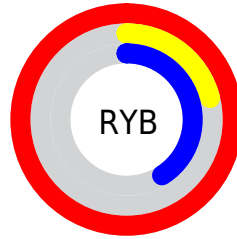
Distribution



Red (100%)

Green (21%)

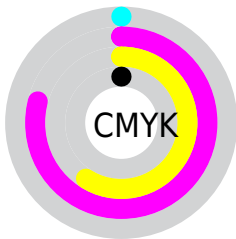
Blue (41%)



Red (100%)

Yellow (21%)

Blue (41%)

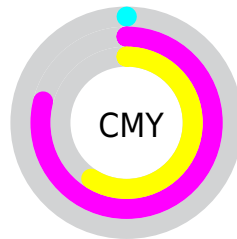


Cyan (0%)

Magenta (79%)

Yellow (59%)

Black (0%)



Cyan (0%)

Magenta (79%)

Yellow (59%)

Brightness & Saturation Gradients

These gradients show how the HunterLab color 49.9182, 73.9461, 16.1802 changes by changing the brightness by 10 percent. The first figure shows a shift by +10% for each color and the second figure -10%.

Similar to the brightness gradients but the following saturation gradients show a change of the HunterLab color 49.9182, 73.9461, 16.1802 by changing the saturation by 10% instead.

49.9182, 73.9461,
16.1802

49.9182, 73.9461,
16.1802

166.5647, 92.1574,
31.1844

40.0216, 71.5497,
14.3444

71.7823, 78.5897,
19.6805

30.8810, 69.2030,
12.4176

83.6663, 80.7962,
21.3724

22.5669, 67.0780,
10.3616

96.1422, 82.9123,
23.0391

15.1715, 65.6257,
8.2866

109.1831, 84.9369,
24.6873

8.8013, 66.5351,
6.1609

122.7655, 86.8709,
26.3223

0.0000, INF, NaN

0.0000, INF, NaN

136.8687, 88.7169,

27.9481

0.0000, NaN, NaN

151.4740, 90.4780,
29.5679

0.0000, NaN, NaN

■ 49.9182, 73.9461,
16.1802

■ 49.9182, 73.9461,
16.1802

■ 47.7352, 78.5499,
19.8623

■ 53.2755, 66.6318,
12.7613

■ 46.6153, 80.3368,
23.3890

■ 57.7508, 57.3608,
9.8850

■ 46.5166, 80.4737,
23.7584

■ 63.2258, 46.9505,
7.6855

■ 69.5585, 36.0533,
6.1725

■ 76.6131, 25.0880,
5.2852

■ 84.2722, 14.2808,
4.9359

■ 92.4394, 3.7309,
5.0357

99.9999, -5.3359,
5.4331

Harmonies

Analogous

The Analogous color harmony consists of three colors that are next to each other on the color wheel.



49.9197, 74.2944, -14.9105



49.9182, 73.9461, 16.1802



49.9197, 49.8413, 29.3542

Triad

The Triadic color harmony groups three colors that are evenly spaced from another and form a triangle on the color wheel.



49.9197, 73.9409, 16.1813



49.9197, -40.1353, 29.1663



49.9197, -17.6009, -97.3346

Complementary

The Complementary color scheme is a pair of colors which are on the opposite of each other on the color wheel.



49.9182, 73.9461, 16.1802



87.5584, -54.9994, 14.3002

Split Complementary

Split-complementary colors differ from the complementary color scheme. The scheme consists of three colors, the original color and two neighbors of the complement color.



49.9197, -39.7084, -61.7492



49.9182, 73.9461, 16.1802



49.9197, -50.2472, 15.6064

Square

The Square scheme is like the rectangle color scheme, but the four colors are evenly spaced on the color wheel.



49.9197, 73.9409, 16.1813



49.9197, -18.3522, 32.8636



49.9197, -50.1143, -16.0104



49.9197, 15.2329, -96.7746

Rectangle

The Rectangle color scheme consists of four colors that form a rectangle on the color wheel.



49.9182, 73.9461, 16.1802



49.9197, 26.4221, 32.2876



49.9197, -50.1143, -16.0104



49.9197, -26.3195, -88.5363

Sweetspot

The Sweet Spot groups the original color and five complimentary colors.



49.9197, 73.9409, 16.1813



80.2335, 19.8543, 5.0555



47.2583, 81.8519, -88.1404



35.8748, 10.9746, 2.4122

0.0000, NaN, NaN



46.2646, -2.4686, 2.5136

Same Dimension

The Same Dimension uses a secret algorithm to generate beautiful new colors.



49.9197, 73.9409, 16.1813



46.9453, 79.9132, 22.0992



55.5129, 52.5365, 31.3968



42.5002, 2.0576, 2.3207



33.6548, 58.2817, 16.7333



10.5809, 18.4785, 4.0587

Inverse Universe

The Inverse Universe completely reimagines the original color for something new.



49.9197, 73.9409, 16.1813



46.9453, 79.9132, 22.0992



72.9157, -24.4098, -32.4251



42.5002, 2.0576, 2.3207



33.6548, 58.2817, 16.7333



10.5809, 18.4785, 4.0587

Previews

White Background



This preview shows how the HunterLab color 49.9182, 73.9461, 16.1802 looks on a white background.

Color Contrast Check

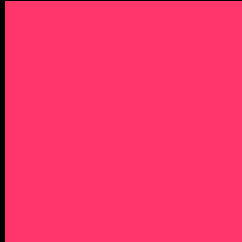
Large Text (above 18pt) WCAG AA ✓ Pass

Any Text WCAG AA × Fail

Large Text (above 18pt) WCAG AAA × Fail

Any Text WCAG AAA × Fail

Black Background



This preview shows how the HunterLab color 49.9182, 73.9461, 16.1802 looks on a black background.

Color Contrast Check

Large Text (above 18pt) WCAG AA ✓ Pass

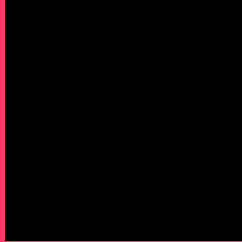
Any Text WCAG AA ✓ Pass

Large Text (above 18pt) WCAG AAA ✓ Pass

Any Text WCAG AAA × Fail

If you want to check with other color combinations, try the [Color Contrast Checker](#).

HunterLab 49.9182, 73.9461, 16.1802 Background



This preview shows how black text looks on a background with the HunterLab color 49.9182, 73.9461, 16.1802.

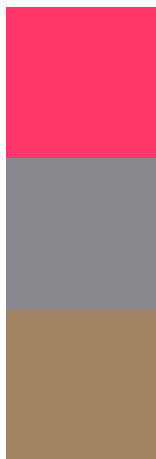


This preview shows how white text looks on a background with the HunterLab color 49.9182, 73.9461, 16.1802.

Color Blindness Simulation

Color vision deficiency is a very complex topic, and I could not describe the different causes any better than Wikipedia does, so if you want to learn more, you should check out their [article about color blindness](#).

Dichromacy



Original Color

49.9182, 73.9461, 16.1802

Protanopia

49.9948, -0.9331, -0.0279

Deuteranopia

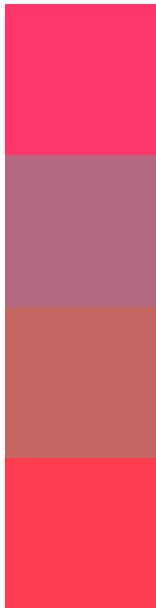
49.8451, 3.3230, 17.8946



Tritanopia

49.8190, 67.7432, 25.9324

Trichromacy



Original Color

49.9182, 73.9461, 16.1802

Protanomaly

46.6013, 26.3589, 2.7531

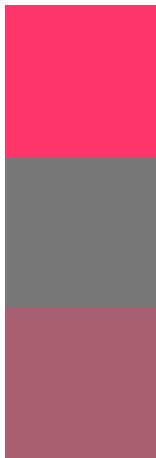
Deuteranomaly

47.2622, 30.0944, 14.8411

Tritanomaly

49.8816, 69.9342, 22.9402

Monochromacy



Original Color

49.9182, 73.9461, 16.1802

Achromatopsia

43.3383, -2.3124, 2.3547

Achromatomaly

42.4718, 25.0263, 3.9667

CSS Examples

Text

The CSS property to change the color of the text to HunterLab 49.9182, 73.9461, 16.1802 is called "color". The color property can be set on classes, ids or directly on the HTML element.

This example shows how text in the color `rgb(255, 54, 105)` looks like.

```
.text, #text, p{  
    color:rgb(255, 54, 105)  
}
```

If you want to add a text shadow in that color use the text-shadow property, you can generate a text shadow directly with our [CSS Text Shadow Generator](#).

Here you see how black text with a 4 pixel rgb(255, 54, 105) colored shadow looks like.

```
.shadow{ text-shadow: 4px 4px 2px rgb(255, 54, 105) }
```

Border

The CSS property to change the border of an element to HunterLab 49.9182, 73.9461, 16.1802 is called "border". The border property can be set on classes, ids or directly on the HTML element.

This example shows the color as border, it can be applied via the CSS property "border" or "border-color".

```
.border, #border, table{ border:4px solid rgb(255, 54, 105) }
```


If only the border color should be changed use the property `border-color`.

```
.border{ border-color:rgb(255, 54, 105) }
```

If you want to add a box shadow in that color use:

Here you see how a box with a 4 pixel `rgb(255, 54, 105)` colored shadow looks like.

```
.boxshadow{ -moz-box-shadow:4px 4px 4px  
4px rgb(255, 54, 105); -webkit-box-  
shadow:4px 4px 4px 4px rgb(255, 54, 105);  
box-shadow:4px 4px 4px 4px rgb(255, 54,  
105) }
```

Background

The CSS property to change the background color of an element to HunterLab 49.9182, 73.9461, 16.1802 is called "background". The background property can be set on classes, ids or directly on the HTML element.

```
.background, #background, body{  
background: rgb(255, 54, 105) }
```

If only the background color should be changed can be used:

```
.background{ background-color: rgb(255, 54,  
105) }
```

This example shows the color as background, it is applied via the CSS property "background".

To optimize and compress your CSS code, you can use our [online CSS compressor and optimizer](#) based on csstidy. If you want to create a linear or radial gradient as background or border, check our [CSS Gradient Generator](#).

Hey! You found this booklet interesting? Support Converting Colors with the new Membership Option!

The pro membership hides all ads, plus gives you double the colors in the color bucket, and more awesome pro features!

[Learn more, Memberships starting at \\$2.50/m!](#)

**Follow me
on Twitter!**

[@ConvertingColor](#)