

Converting Colors

HunterLab(49.9241, 77.4981,
17.6195)

Have a look what the booklet for
HunterLab(49.9241, 77.4981,
17.6195) contains.

HunterLab(49.1463, 75.8582, 16.7587)	3
<i>Conversions</i>	4
<i>Details</i>	6
<i>Harmonies</i>	12
<i>Previews</i>	24
<i>Color Blindness Simulation</i>	28
<i>CSS Examples</i>	31

Color

**HunterLab(49.1463, 75.8582,
16.7587)**

Conversions

Conversions Part 1

Format	Color
Hex	FF2E65
RGB	255, 46, 101
RGB Percent	100%, 18%, 40%
CMY	0.0000, 0.8195, 0.6039
CMYK	0.00, 0.82, 0.60, 0.00
HSL	344°, 100%, 59%
HSV	344°, 82%, 100%
XYZ	44.5660, 24.1536, 14.6251
YIQ	114.7610, 106.9090, 61.4130

Conversions

Conversions Part 2

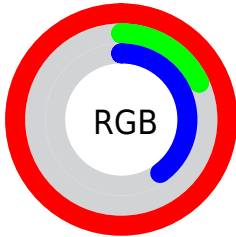
Format	Color
R_{YB}	255, 46, 101
Decimal	16723557
CIE _{Lab}	56.24, 77.05, 22.13
CIE _{LCh}	56, 80.167, 16.024
Yxy	24.1550, 0.5347, 0.2898
Android (android.graphics.Color)	4294913637 (0xFFFF2E65)
YUV	114.7610, -6.7842, 122.9896
Hunter-Lab	49.1463, 75.8582, 16.7587

Details

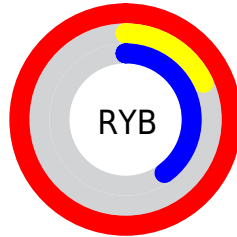
The HunterLab color **49.1463, 75.8582, 16.7587** is a dark color, and the websafe version is hex **FF3366**. The color can be described as dark washed rose. A complement of this color would be **87.3338, -56.1280, 15.7272**, and the grayscale version is **41.3137, -2.2044, 2.2446**.

A 20% lighter version of the original color is **59.6336, 54.0601, 8.1577**, and **33.6930, 58.5190, 15.4256** is the 20% darker color. If you saturate the color by 10%, you get **47.3193, 79.5118, 20.4955**, and if you desaturate by 10%, it is **52.1381, 69.3382, 13.2097**.

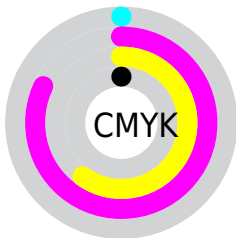
Distribution



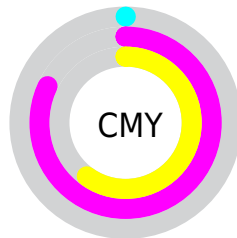
- Red (100%)
- Green (18%)
- Blue (40%)



- Red (100%)
- Yellow (18%)
- Blue (40%)



- Cyan (0%)
- Magenta (82%)
- Yellow (60%)
- Black (0%)



- Cyan (0%)
- Magenta (82%)
- Yellow (60%)

Brightness & Saturation Gradients

These gradients show how the HunterLab color 49.1463, 75.8582, 16.7587 changes by changing the brightness by 10 percent. The first figure shows a shift by +10% for each color and the second figure -10%.

Similar to the brightness gradients but the following saturation gradients show a change of the HunterLab color 49.1463, 75.8582, 16.7587 by changing the saturation by 10% instead.

■ 49.1463, 75.8582,
16.7587

■ 49.1463, 75.8582,
16.7587

165.4096, 94.5218,
32.3948

■ 39.3048, 73.4360,
14.8222

■ 70.9106, 80.5863,
20.4335

■ 30.2240, 71.0884,
12.7824

■ 82.7487, 82.8425,
22.2028

■ 21.9756, 69.0137,
10.5966

■ 95.1810, 85.0107,
23.9417

■ 14.6541, 67.7327,
8.5960

■ 108.1801, 87.0884,
25.6579

■ 8.3133, 69.8768,
5.8193

■ 121.7224, 89.0759,
27.3572

0.0000, INF, NaN

0.0000, INF, NaN

135.7869, 90.9754,

29.0442

0.0000, NaN, NaN

150.3549, 92.7896,
30.7224

0.0000, NaN, NaN

■ 49.1463, 75.8582,
16.7587

■ 49.1463, 75.8582,
16.7587

■ 47.3193, 79.5118,
20.4955

■ 52.1381, 69.3382,
13.2097

■ 46.5470, 80.5860,
23.3113

■ 56.2715, 60.5942,
10.1668

■ 61.4443, 50.4533,
7.8034

■ 67.5182, 39.6361,
6.1543

■ 74.3538, 28.6347,
5.1687

81.8278, 17.7307,
4.7589

89.8375, 7.0579,
4.8313

98.3001, -3.3381,
5.3013

100.0000, -5.3359,
5.4331

Harmonies

Analogous

The Analogous color harmony consists of three colors that are next to each other on the color wheel.



49.1478, 76.7820, -14.5392



49.1463, 75.8582, 16.7587



49.1478, 50.5615, 29.4949

Triad

The Triadic color harmony groups three colors that are evenly spaced from another and form a triangle on the color wheel.



49.1478, 75.8529, 16.7598



49.1478, -40.9139, 29.0348



49.1478, -17.2314, -101.6335

Complementary

The Complementary color scheme is a pair of colors which are on the opposite of each other on the color wheel.



49.1463, 75.8582, 16.7587



87.3338, -56.1280, 15.7272

Split Complementary

Split-complementary colors differ from the complementary color scheme. The scheme consists of three colors, the original color and two neighbors of the complement color.



49.1478, -39.8245, -64.9835



49.1463, 75.8582, 16.7587



49.1478, -50.8067, 15.2901

Square

The Square scheme is like the rectangle color scheme, but the four colors are evenly spaced on the color wheel.



49.1478, 75.8529, 16.7598



49.1478, -19.1690, 32.6433



49.1478, -50.4703, -17.4185



49.1478, 16.4458, -100.1428

Rectangle

The Rectangle color scheme consists of four colors that form a rectangle on the color wheel.



49.1463, 75.8582, 16.7587



49.1478, 26.3772, 32.1859



49.1478, -50.4703, -17.4185



49.1478, -26.1520, -92.6735

Sweetspot

The Sweet Spot groups the original color and five complimentary colors.



49.1478, 75.8529, 16.7598



79.4896, 21.0327, 4.8285



46.2113, 83.8858, -91.4394



35.5581, 11.5033, 2.2982

0.0000, NaN, NaN



46.2646, -2.4686, 2.5136

Same Dimension

The Same Dimension uses a secret algorithm to generate beautiful new colors.



49.1478, 75.8529, 16.7598



46.7158, 80.3628, 22.6600



54.4082, 55.0639, 31.6711



42.5036, 2.0756, 2.2728



33.6776, 58.3659, 16.3981



10.5896, 18.5104, 3.9322

Inverse Universe

The Inverse Universe completely reimagines the original color for something new.



49.1478, 75.8529, 16.7598



46.7158, 80.3628, 22.6600



72.1515, -24.0755, -33.7050



42.5036, 2.0756, 2.2728



33.6776, 58.3659, 16.3981



10.5896, 18.5104, 3.9322

Previews

White Background



This preview shows how the HunterLab color 49.1463, 75.8582, 16.7587 looks on a white background.

Color Contrast Check

Large Text (above 18pt) WCAG AA ✓ Pass

Any Text WCAG AA × Fail

Large Text (above 18pt) WCAG AAA × Fail

Any Text WCAG AAA × Fail

Black Background



This preview shows how the HunterLab color 49.1463, 75.8582, 16.7587 looks on a black background.

Color Contrast Check

Large Text (above 18pt) WCAG AA ✓ Pass

Any Text WCAG AA ✓ Pass

Large Text (above 18pt) WCAG AAA ✓ Pass

Any Text WCAG AAA × Fail

If you want to check with other color combinations, try the [Color Contrast Checker](#).

HunterLab 49.1463, 75.8582, 16.7587 Background



This preview shows how black text looks on a background with the HunterLab color 49.1463, 75.8582, 16.7587.



This preview shows how white text looks on a background with the HunterLab color 49.1463, 75.8582,

Color Blindness Simulation

Color vision deficiency is a very complex topic, and I could not describe the different causes any better than Wikipedia does, so if you want to learn more, you should check out their [article about color blindness](#).

Dichromacy



Original Color

49.1463, 75.8582, 16.7587

Protanopia

49.1710, -1.0591, 0.3636

Deuteranopia

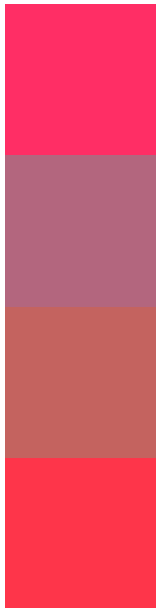
49.1297, 3.5422, 18.3911



Tritanopia

49.1064, 69.4035, 26.6410

Trichromacy



Original Color

49.1463, 75.8582, 16.7587

Protanomaly

45.3793, 27.2146, 2.6495

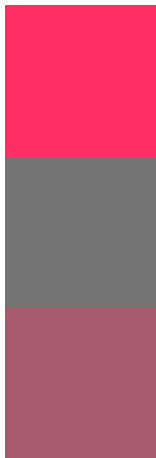
Deuteranomaly

46.3526, 31.6852, 15.2688

Tritanomaly

49.1034, 71.7713, 23.6912

Monochromacy



Original Color

49.1463, 75.8582, 16.7587

Achromatopsia

41.4054, -2.2093, 2.2496

Achromatomaly

40.6757, 26.2241, 4.0206

CSS Examples

Text

The CSS property to change the color of the text to HunterLab 49.1463, 75.8582, 16.7587 is called "color". The color property can be set on classes, ids or directly on the HTML element.

This example shows how text in the color `rgb(255, 46, 101)` looks like.

```
.text, #text, p{  
    color:rgb(255, 46, 101)  
}
```

If you want to add a text shadow in that color use the text-shadow property, you can generate a text shadow directly with our [CSS Text Shadow Generator](#).

Here you see how black text with a 4 pixel rgb(255, 46, 101) colored shadow looks like.

```
.shadow{ text-shadow: 4px 4px 2px rgb(255, 46, 101) }
```

Border

The CSS property to change the border of an element to HunterLab 49.1463, 75.8582, 16.7587 is called "border". The border property can be set on classes, ids or directly on the HTML element.

This example shows the color as border, it can be applied via the CSS property "border" or "border-color".

```
.border, #border, table{ border:4px solid rgb(255, 46, 101) }
```


If only the border color should be changed use the property `border-color`.

```
.border{ border-color:rgb(255, 46, 101) }
```

If you want to add a box shadow in that color use:

Here you see how a box with a 4 pixel `rgb(255, 46, 101)` colored shadow looks like.

```
.boxshadow{ -moz-box-shadow:4px 4px 4px  
4px rgb(255, 46, 101); -webkit-box-  
shadow:4px 4px 4px 4px rgb(255, 46, 101);  
box-shadow:4px 4px 4px 4px rgb(255, 46,  
101) }
```

Background

The CSS property to change the background color of an element to HunterLab 49.1463, 75.8582, 16.7587 is called "background". The background property can be set on classes, ids or directly on the HTML element.

```
.background, #background, body{  
background: rgb(255, 46, 101) }
```

If only the background color should be changed can be used:

```
.background{ background-color: rgb(255, 46,  
101) }
```

This example shows the color as background, it is applied via the CSS property "background".

To optimize and compress your CSS code, you can use our [online CSS compressor and optimizer](#) based on csstidy. If you want to create a linear or radial gradient as background or border, check our [CSS Gradient Generator](#).

Hey! You found this booklet interesting? Support Converting Colors with the new Membership Option!

The pro membership hides all ads, plus gives you double the colors in the color bucket, and more awesome pro features!

[Learn more, Memberships starting at \\$2.50/m!](#)

**Follow me
on Twitter!**

@ConvertingColor