

Converting Colors

HunterLab(49.9518, 60.5388,
14.2218)

Have a look what the booklet for
HunterLab(49.9518, 60.5388,
14.2218) contains.

HunterLab(49.9588, 60.5046, 14.3364)	3
<i>Conversions</i>	4
<i>Details</i>	6
<i>Harmonies</i>	12
<i>Previews</i>	24
<i>Color Blindness Simulation</i>	28
<i>CSS Examples</i>	31

Color

**HunterLab(49.9588, 60.5046,
14.3364)**

Conversions

Conversions Part 1

Format	Color
Hex	F04D6E
RGB	240, 77, 110
RGB Percent	94%, 30%, 43%
CMY	0.0588, 0.6980, 0.5686
CMYK	0.00, 0.68, 0.54, 0.06
HSL	348°, 84%, 62%
HSV	348°, 68%, 94%
XYZ	41.4035, 24.9588, 17.3872
YIQ	129.4990, 86.5550, 44.8190

Conversions

Conversions Part 2

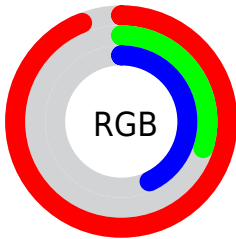
Format	Color
R_{YB}	240, 77, 110
Decimal	15748462
CIE Lab	57.04, 64.22, 17.42
CIE LCh	57, 66.536, 15.176
Yxy	24.9602, 0.4944, 0.2980
Android (android.graphics.Color)	4293938542 (0xFFFF04D6E)
YUV	129.4990, -9.6130, 96.9094
Hunter-Lab	49.9588, 60.5046, 14.3364

Details

The HunterLab color **49.9588, 60.5046, 14.3364** is a dark color, and the websafe version is hex **FF3366**. The color can be described as middle washed rose. A complement of this color would be **82.7065, -46.5689, 7.8257**, and the grayscale version is **47.0645, -2.5112, 2.5571**.

A 20% lighter version of the original color is **64.1570, 44.4683, 9.1514**, and **31.3430, 54.8209, 11.3774** is the 20% darker color. If you saturate the color by 10%, you get **46.7175, 67.6041, 17.4501**, and if you desaturate by 10%, it is **54.2433, 51.7145, 11.5742**.

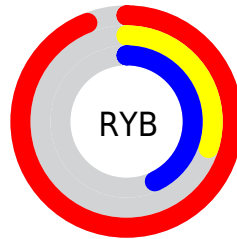
Distribution



Red (94%)

Green (30%)

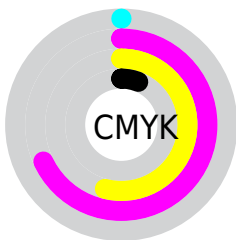
Blue (43%)



Red (94%)

Yellow (30%)

Blue (43%)

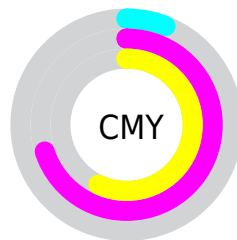


Cyan (0%)

Magenta (68%)

Yellow (54%)

Black (6%)



Cyan (6%)

Magenta (70%)

Yellow (57%)

Brightness & Saturation Gradients

These gradients show how the HunterLab color 49.9588, 60.5046, 14.3364 changes by changing the brightness by 10 percent. The first figure shows a shift by +10% for each color and the second figure -10%.

Similar to the brightness gradients but the following saturation gradients show a change of the HunterLab color 49.9588, 60.5046, 14.3364 by changing the saturation by 10% instead.

■ 49.9588, 60.5046,
14.3364

■ 49.9588, 60.5046,
14.3364

166.6253, 75.8937,
27.8530

■ 40.0592, 58.3336,
12.7282

■ 71.8281, 64.5798,
17.4346

■ 30.9156, 56.1275,
11.0534

■ 83.7145, 66.4733,
18.9459

■ 22.5980, 53.9824,
9.2809

■ 96.1927, 68.2683,
20.4426

■ 15.1987, 52.1690,
7.3786

■ 109.2357, 69.9680,
21.9300

■ 8.8261, 51.7808,
6.1783

■ 122.8202, 71.5760,
23.4119

0.0000, INF, NaN

0.0000, INF, NaN

136.9254, 73.0969,

24.8915

0.0000, NaN, NaN

151.5326, 74.5347,
26.3712

0.0000, NaN, NaN

■ 49.9588, 60.5046,
14.3364

■ 49.9588, 60.5046,
14.3364

■ 46.7175, 67.6041,
17.4501

■ 54.2433, 51.7145,
11.5742

■ 44.5742, 72.3065,
20.6417

■ 59.4493, 42.0016,
9.3077

■ 43.4593, 74.3646,
23.5560


■ 65.4441, 31.9374,
7.5761


■ 43.2936, 74.6456,
24.0685

■ 72.1012, 21.8795,
6.3497

■ 79.3124, 12.0136,
5.5681

 86.9896, 2.4148,
5.1645

 95.0619, -6.9037,
5.0767

 98.6231, -10.1591,
3.7172

Harmonies

Analogous

The Analogous color harmony consists of three colors that are next to each other on the color wheel.



49.9602, 60.6244, -12.2083



49.9588, 60.5046, 14.3364



49.9602, 41.1413, 27.0891

Triad

The Triadic color harmony groups three colors that are evenly spaced from another and form a triangle on the color wheel.



49.9602, 60.5002, 14.3375



49.9602, -35.3588, 27.0018



49.9602, -15.6882, -76.2466

Complementary

The Complementary color scheme is a pair of colors which are on the opposite of each other on the color wheel.



49.9588, 60.5046, 14.3364



82.7065, -46.5689, 7.8257

Split Complementary

Split-complementary colors differ from the complementary color scheme. The scheme consists of three colors, the original color and two neighbors of the complement color.



49.9602, -35.1895, -48.8295



49.9588, 60.5046, 14.3364



49.9602, -44.7309, 14.1109

Square

The Square scheme is like the rectangle color scheme, but the four colors are evenly spaced on the color wheel.



49.9602, 60.5002, 14.3375



49.9602, -15.9739, 31.1764



49.9602, -44.6766, -12.6012



49.9602, 12.1940, -76.0608

Rectangle

The Rectangle color scheme consists of four colors that form a rectangle on the color wheel.



49.9588, 60.5046, 14.3364



49.9602, 21.9556, 30.4255



49.9602, -44.6766, -12.6012



49.9602, -23.2885, -69.4902

Sweetspot

The Sweet Spot groups the original color and five complimentary colors.



49.9602, 60.5002, 14.3375



83.2570, 15.1227, 6.1086



49.5327, 69.9798, -66.9299



37.5001, 8.3707, 2.9268

0.0000, NaN, NaN



46.2646, -2.4686, 2.5136

Same Dimension

The Same Dimension uses a secret algorithm to generate beautiful new colors.



49.9602, 60.5002, 14.3375



49.1462, 74.4274, 19.8479



57.6840, 36.3894, 28.9630



39.7632, 1.8068, 2.4134



32.0556, 55.3160, 17.4589



9.3200, 16.2290, 3.9437

Inverse Universe

The Inverse Universe completely reimagines the original color for something new.



49.9602, 60.5002, 14.3375



49.1462, 74.4274, 19.8479



68.0975, -19.4556, -30.1548



39.7632, 1.8068, 2.4134



32.0556, 55.3160, 17.4589



9.3200, 16.2290, 3.9437

Previews

White Background



This preview shows how the HunterLab color 49.9588, 60.5046, 14.3364 looks on a white background.

Color Contrast Check

Large Text (above 18pt) WCAG AA ✓ Pass

Any Text WCAG AA × Fail

Large Text (above 18pt) WCAG AAA × Fail

Any Text WCAG AAA × Fail

Black Background



This preview shows how the HunterLab color 49.9588, 60.5046, 14.3364 looks on a black background.

Color Contrast Check

Large Text (above 18pt) WCAG AA ✓ Pass

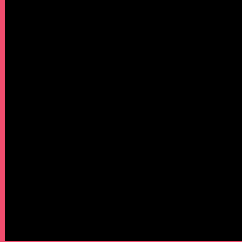
Any Text WCAG AA ✓ Pass

Large Text (above 18pt) WCAG AAA ✓ Pass

Any Text WCAG AAA × Fail

If you want to check with other color combinations, try the [Color Contrast Checker](#).

HunterLab 49.9588, 60.5046, 14.3364 Background



This preview shows how black text looks on a background with the HunterLab color 49.9588, 60.5046, 14.3364.

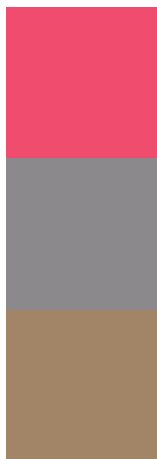


This preview shows how white text looks on a background with the HunterLab color 49.9588, 60.5046,

Color Blindness Simulation

Color vision deficiency is a very complex topic, and I could not describe the different causes any better than Wikipedia does, so if you want to learn more, you should check out their [article about color blindness](#).

Dichromacy



Original Color

49.9588, 60.5046, 14.3364

Protanopia

50.2730, -1.6028, 1.6889

Deuteranopia

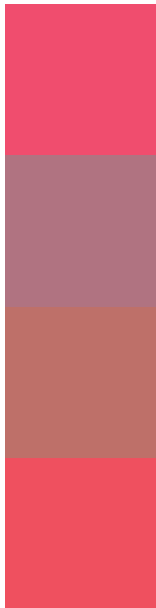
50.1430, 3.2025, 16.0905



Tritanopia

50.0572, 56.0839, 21.3989

Trichromacy



Original Color

49.9588, 60.5046, 14.3364

Protanomaly

48.0381, 19.9673, 4.3168

Deuteranomaly

48.5339, 23.8531, 13.9975

Tritanomaly

49.9142, 57.5939, 18.9051

Monochromacy



Original Color

49.9588, 60.5046, 14.3364

Achromatopsia

47.2470, -2.5210, 2.5670

Achromatomaly

46.2006, 18.9729, 4.7529

CSS Examples

Text

The CSS property to change the color of the text to HunterLab 49.9588, 60.5046, 14.3364 is called "color". The color property can be set on classes, ids or directly on the HTML element.

This example shows how text in the color `rgb(240, 77, 110)` looks like.

```
.text, #text, p{  
    color:rgb(240, 77, 110)  
}
```

If you want to add a text shadow in that color use the text-shadow property, you can generate a text shadow directly with our [CSS Text Shadow Generator](#).

Here you see how black text with a 4 pixel rgb(240, 77, 110) colored shadow looks like.

```
.shadow{ text-shadow: 4px 4px 2px rgb(240, 77, 110) }
```

Border

The CSS property to change the border of an element to HunterLab 49.9588, 60.5046, 14.3364 is called "border". The border property can be set on classes, ids or directly on the HTML element.

This example shows the color as border, it can be applied via the CSS property "border" or "border-color".

```
.border, #border, table{ border:4px solid rgb(240, 77, 110) }
```


If only the border color should be changed use the property border-color.

```
.border{ border-color:rgb(240, 77, 110) }
```

If you want to add a box shadow in that color use:

Here you see how a box with a 4 pixel rgb(240, 77, 110) colored shadow looks like.

```
.boxshadow{ -moz-box-shadow:4px 4px 4px  
4px rgb(240, 77, 110); -webkit-box-  
shadow:4px 4px 4px 4px rgb(240, 77, 110);  
box-shadow:4px 4px 4px 4px rgb(240, 77,  
110) }
```

Background

The CSS property to change the background color of an element to HunterLab 49.9588, 60.5046, 14.3364 is called "background". The background property can be set on classes, ids or directly on the HTML element.

```
.background, #background, body{  
background: rgb(240, 77, 110) }
```

If only the background color should be changed can be used:

```
.background{ background-color: rgb(240, 77,  
110) }
```

This example shows the color as background, it is applied via the CSS property "background".

To optimize and compress your CSS code, you can use our [online CSS compressor and optimizer](#) based on csstidy. If you want to create a linear or radial gradient as background or border, check our [CSS Gradient Generator](#).

Hey! You found this booklet interesting? Support Converting Colors with the new Membership Option!

The pro membership hides all ads, plus gives you double the colors in the color bucket, and more awesome pro features!

[Learn more, Memberships starting at \\$2.50/m!](#)

**Follow me
on Twitter!**

@ConvertingColor