

Converting Colors

HunterLab(49.9820, 11.3878,
16.5877)

Have a look what the booklet for
HunterLab(49.9820, 11.3878,
16.5877) contains.

HunterLab(49.8171, 11.4930, 16.5491)	3
<i>Conversions</i>	4
<i>Details</i>	6
<i>Harmonies</i>	12
<i>Previews</i>	24
<i>Color Blindness Simulation</i>	28
<i>CSS Examples</i>	31

Color

**HunterLab(49.8171, 11.4930,
16.5491)**

Conversions

Conversions Part 1

Format	Color
Hex	B07D64
RGB	176, 125, 100
RGB Percent	69%, 49%, 39%
CMY	0.3098, 0.5098, 0.6078
CMYK	0.00, 0.29, 0.43, 0.31
HSL	20°, 32%, 54%
HSV	20°, 43%, 69%
XYZ	27.5384, 24.8174, 15.3954
YIQ	137.3990, 38.4210, 3.0370

Conversions

Conversions Part 2

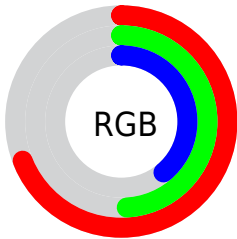
Format	Color
R _Y B	176, 137, 100
Decimal	11566436
CIE Lab	56.90, 16.64, 21.49
CIE LCh	57, 27.181, 52.252
Yxy	24.8186, 0.4065, 0.3663
Android (android.graphics.Color)	4289756516 (0xFFB07D64)
YUV	137.3990, -18.4377, 33.8531
Hunter-Lab	49.8171, 11.4930, 16.5491

Details

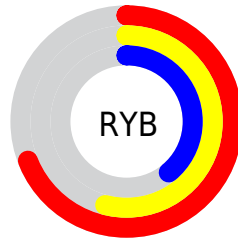
The HunterLab color **49.8171, 11.4930, 16.5491** is a dark color, and the websafe version is hex **996666**. A complement of this color would be **52.8924, -11.0333, -13.6436**, and the grayscale version is **50.2356, -2.6804, 2.7294**.

A 20% lighter version of the original color is **71.6930, 11.7508, 20.1696**, and **30.8073, 10.4724, 12.6844** is the 20% darker color. If you saturate the color by 10%, you get **46.5825, 15.6952, 18.7162**, and if you desaturate by 10%, it is **53.2609, 7.5713, 14.0100**.

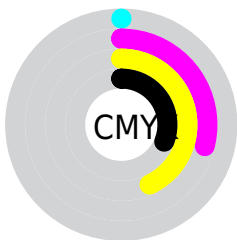
Distribution



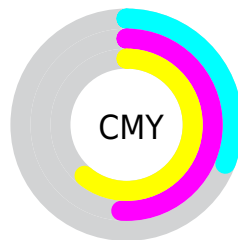
- Red (69%)
- Green (49%)
- Blue (39%)



- Red (69%)
- Yellow (54%)
- Blue (39%)



- Cyan (0%)
- Magenta (29%)
- Yellow (43%)
- Black (31%)



- Cyan (31%)
- Magenta (51%)
- Yellow (61%)

Brightness & Saturation Gradients

These gradients show how the HunterLab color 49.8171, 11.4930, 16.5491 changes by changing the brightness by 10 percent. The first figure shows a shift by +10% for each color and the second figure -10%.

Similar to the brightness gradients but the following saturation gradients show a change of the HunterLab color 49.8171, 11.4930, 16.5491 by changing the saturation by 10% instead.

■ 49.8171, 11.4930,
16.5491

■ 49.8171, 11.4930,
16.5491

166.4132, 11.6640,
31.8820

■ 39.9274, 11.1216,
14.6619

■ 71.6679, 11.9692,
20.1384

■ 30.7947, 10.6489,
12.6787

■ 83.5459, 12.0972,
21.8704

■ 22.4891, 10.0544,
10.5589

■ 96.0161, 12.1603,
23.5747

■ 15.1033, 9.3139,
8.4748

■ 109.0515, 12.1639,
25.2585

■ 8.7389, 8.5380,
6.1172

122.6287, 12.1126,
26.9273

0.0000, INF, NaN

0.0000, NaN, NaN

136.7268, 12.0100,

28.5852

0.0000, NaN, NaN

151.3272, 11.8596,
30.2359

0.0000, NaN, NaN

■ 49.8171, 11.4930,
16.5491

■ 49.8171, 11.4930,
16.5491

■ 46.5825, 15.6952,
18.7162

■ 53.2609, 7.5713,
14.0100

■ 43.5796, 20.1709,
20.4438

■ 56.8868, 3.9326,
11.1548

■ 40.8386, 24.8755,
21.6647

■ 60.6759, 0.5595,
8.0335

■ 38.3894, 29.7262,
22.3197

■ 64.6106, -2.5685,
4.6865

■ 36.2602, 34.5889,
22.3801

■ 68.6759, -5.4737,
1.1469

■ 34.9950, 37.7775,
22.2251

■ 72.8593, -8.1786,
-2.5586

■ 77.1496, -10.7046,
-6.4085

■ 81.5376, -13.0712,
-10.3852

■ 85.8866, -16.0170,
-12.6680

Harmonies

Analogous

The Analogous color harmony consists of three colors that are next to each other on the color wheel.



49.8183, 19.3086, 9.9836



49.8171, 11.4930, 16.5491



49.8183, 0.3309, 19.2728

Triad

The Triadic color harmony groups three colors that are evenly spaced from another and form a triangle on the color wheel.



49.8183, 11.4907, 16.5498



49.8183, -22.5851, 5.4436



49.8183, 5.9202, -20.7229

Complementary

The Complementary color scheme is a pair of colors which are on the opposite of each other on the color wheel.



49.8171, 11.4930, 16.5491



52.8924, -11.0333, -13.6436

Split Complementary

Split-complementary colors differ from the complementary color scheme. The scheme consists of three colors, the original color and two neighbors of the complement color.



49.8183, -5.5836, -22.7099



49.8171, 11.4930, 16.5491



49.8183, -21.3796, -5.8542

Square

The Square scheme is like the rectangle color scheme, but the four colors are evenly spaced on the color wheel.



49.8183, 11.4907, 16.5498



49.8183, -18.8452, 13.8689



49.8183, -15.3902, -16.7687



49.8183, 15.8961, -11.8276

Rectangle

The Rectangle color scheme consists of four colors that form a rectangle on the color wheel.



49.8171, 11.4930, 16.5491



49.8183, -7.2306, 19.0963



49.8183, -15.3902, -16.7687



49.8183, 2.0798, -22.2911

Sweetspot

The Sweet Spot groups the original color and five complimentary colors.



49.8183, 11.4907, 16.5498



81.6897, 0.7738, 10.8391



45.3977, 31.1347, -10.2401



37.5063, 0.8049, 5.4824



94.3401, -5.0338, 5.1257



41.3092, -2.2042, 2.2444

Same Dimension

The Same Dimension uses a secret algorithm to generate beautiful new colors.



49.8183, 11.4907, 16.5498



62.8479, 20.9789, 25.1340



60.0120, -6.4585, 24.9543



29.9112, -0.3237, 3.2567



30.1371, 31.9104, 19.1290



6.2865, 3.3205, 3.9319

Inverse Universe

The Inverse Universe completely reimagines the original color for something new.



52.8924, -11.0333, -13.6436



67.7791, -15.5678, -23.6723



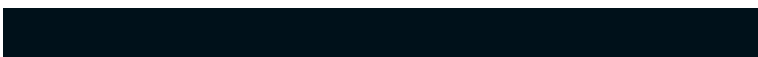
42.2655, 6.7088, -31.4576



30.2505, -2.7682, -0.0404



34.5449, -5.8541, -30.5407



6.9043, -2.1787, -3.9266

Previews

White Background



This preview shows how the HunterLab color 49.8171, 11.4930, 16.5491 looks on a white background.

Color Contrast Check

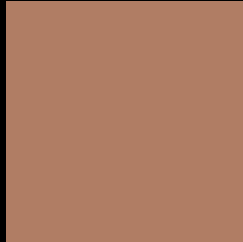
Large Text (above 18pt) WCAG AA ✓ Pass

Any Text WCAG AA × Fail

Large Text (above 18pt) WCAG AAA × Fail

Any Text WCAG AAA × Fail

Black Background



This preview shows how the HunterLab color 49.8171, 11.4930, 16.5491 looks on a black background.

Color Contrast Check

Large Text (above 18pt) WCAG AA ✓ Pass

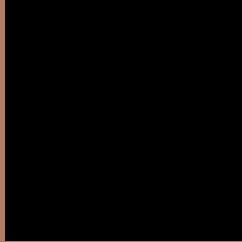
Any Text WCAG AA ✓ Pass

Large Text (above 18pt) WCAG AAA ✓ Pass

Any Text WCAG AAA × Fail

If you want to check with other color combinations, try the [Color Contrast Checker](#).

HunterLab 49.8171, 11.4930, 16.5491 Background



This preview shows how black text looks on a background with the HunterLab color 49.8171, 11.4930, 16.5491.



This preview shows how white text looks on a background with the HunterLab color 49.8171, 11.4930,

Color Blindness Simulation

Color vision deficiency is a very complex topic, and I could not describe the different causes any better than Wikipedia does, so if you want to learn more, you should check out their [article about color blindness](#).

Dichromacy



Original Color

49.8171, 11.4930, 16.5491

Protanopia

50.0222, -4.2181, 14.9089

Deuteranopia

49.8145, 3.3699, 16.7047



Tritanopia

49.8700, 18.1633, 5.9393

Trichromacy



Original Color

49.8171, 11.4930, 16.5491

Protanomaly

49.9224, 1.0962, 15.5413

Deuteranomaly

49.8165, 6.1218, 16.7547

Tritanomaly

49.7151, 15.8629, 10.0979

Monochromacy



Original Color

49.8171, 11.4930, 16.5491

Achromatopsia

50.0158, -2.6687, 2.7175

Achromatomaly

49.8092, 1.6663, 8.0230

CSS Examples

Text

The CSS property to change the color of the text to HunterLab 49.8171, 11.4930, 16.5491 is called "color". The color property can be set on classes, ids or directly on the HTML element.

This example shows how text in the color `rgb(176, 125, 100)` looks like.

```
.text, #text, p{  
    color:rgb(176, 125, 100)  
}
```

If you want to add a text shadow in that color use the text-shadow property, you can generate a text shadow directly with our [CSS Text Shadow Generator](#).

Here you see how black text with a 4 pixel rgb(176, 125, 100) colored shadow looks like.

```
.shadow{ text-shadow: 4px 4px 2px rgb(176, 125, 100) }
```

Border

The CSS property to change the border of an element to HunterLab 49.8171, 11.4930, 16.5491 is called "border". The border property can be set on classes, ids or directly on the HTML element.

This example shows the color as border, it can be applied via the CSS property "border" or "border-color".

```
.border, #border, table{ border:4px solid rgb(176, 125, 100) }
```


If only the border color should be changed use the property border-color.

```
.border{ border-color:rgb(176, 125, 100) }
```

If you want to add a box shadow in that color use:

Here you see how a box with a 4 pixel rgb(176, 125, 100) colored shadow looks like.

```
.boxshadow{ -moz-box-shadow:4px 4px 4px  
4px rgb(176, 125, 100); -webkit-box-  
shadow:4px 4px 4px 4px rgb(176, 125, 100);  
box-shadow:4px 4px 4px 4px rgb(176, 125,  
100) }
```

Background

The CSS property to change the background color of an element to HunterLab 49.8171, 11.4930, 16.5491 is called "background". The background property can be set on classes, ids or directly on the HTML element.

```
.background, #background, body{  
background: rgb(176, 125, 100) }
```

If only the background color should be changed can be used:

```
.background{ background-color: rgb(176,  
125, 100) }
```

This example shows the color as background, it is applied via the CSS property "background".

To optimize and compress your CSS code, you can use our [online CSS compressor and optimizer](#) based on csstidy. If you want to create a linear or radial gradient as background or border, check our [CSS Gradient Generator](#).

Hey! You found this booklet interesting? Support Converting Colors with the new Membership Option!

The pro membership hides all ads, plus gives you double the colors in the color bucket, and more awesome pro features!

[Learn more, Memberships starting at \\$2.50/m!](#)

**Follow me
on Twitter!**

@ConvertingColor